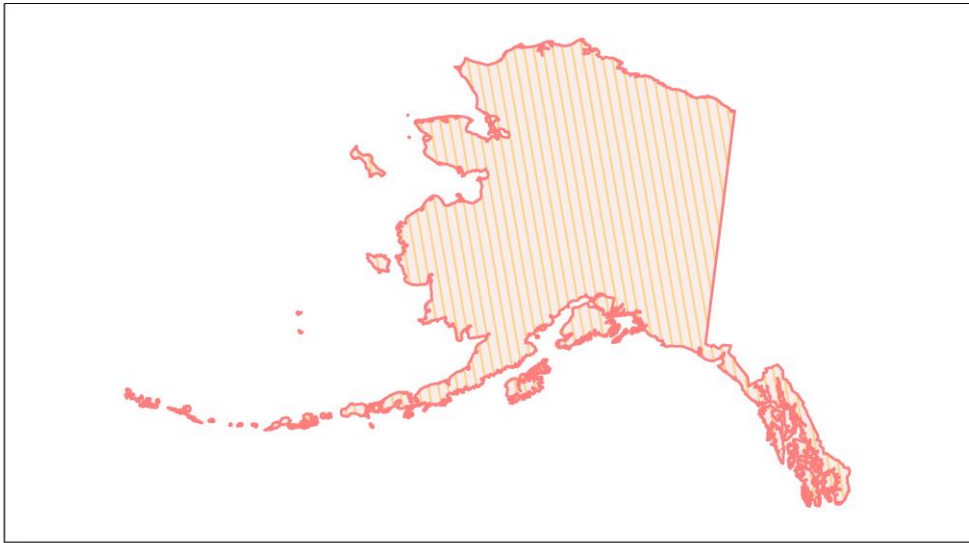
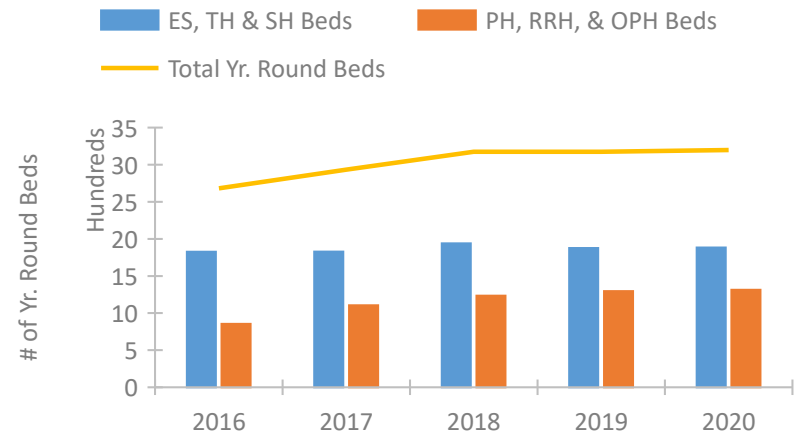


Alaska Continuum of Care Performance Profile

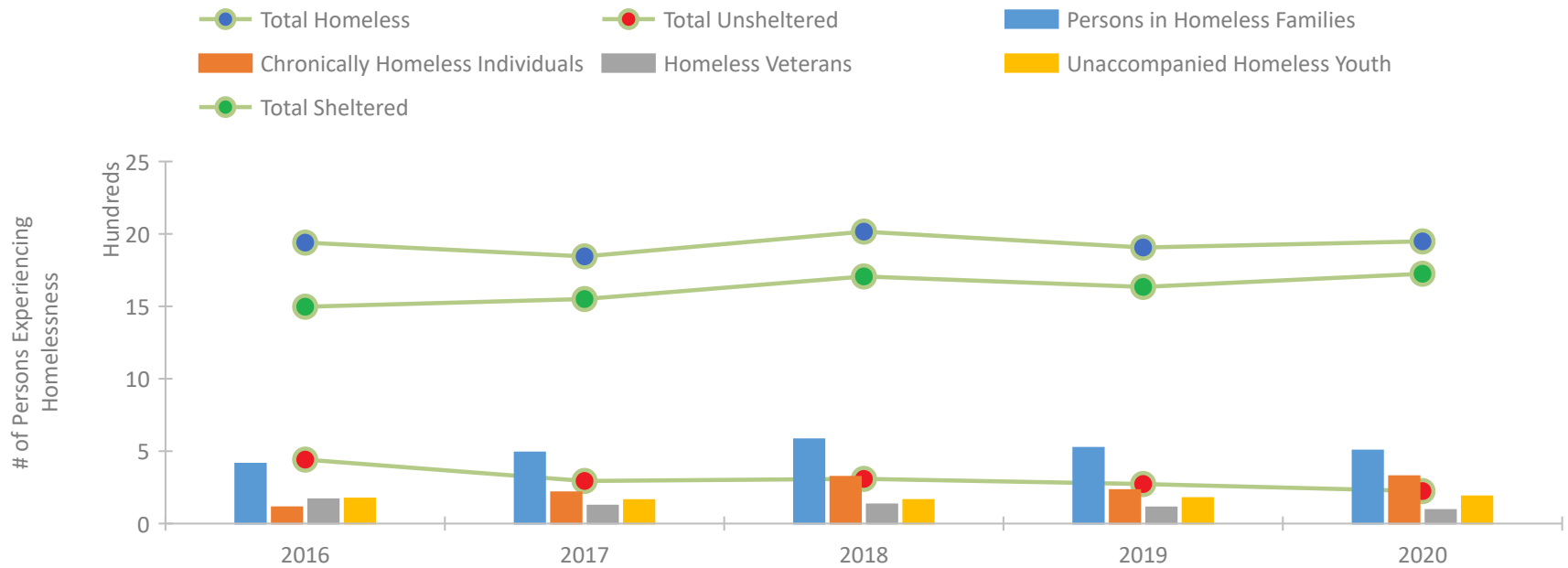


2020 CoC Boundaries 2019 CoC Boundaries

Housing Inventory Count by Program Type

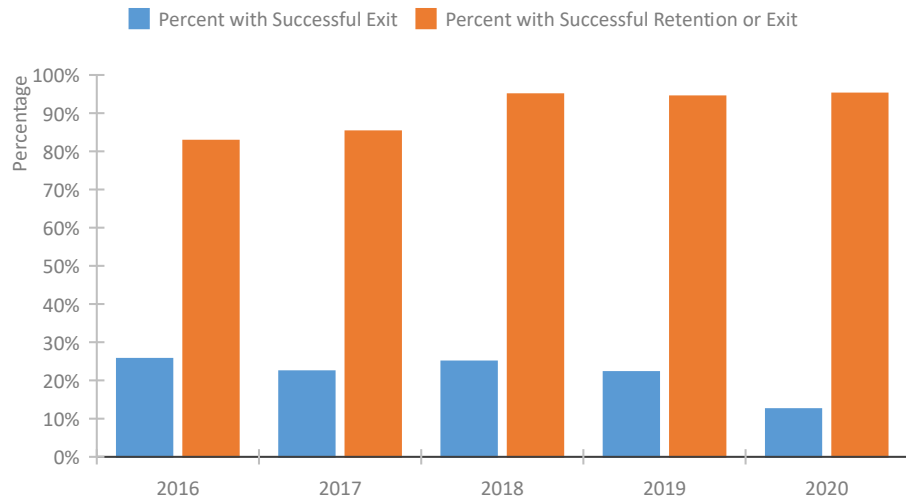


Homeless Population – Point-in-Time (PIT) Count

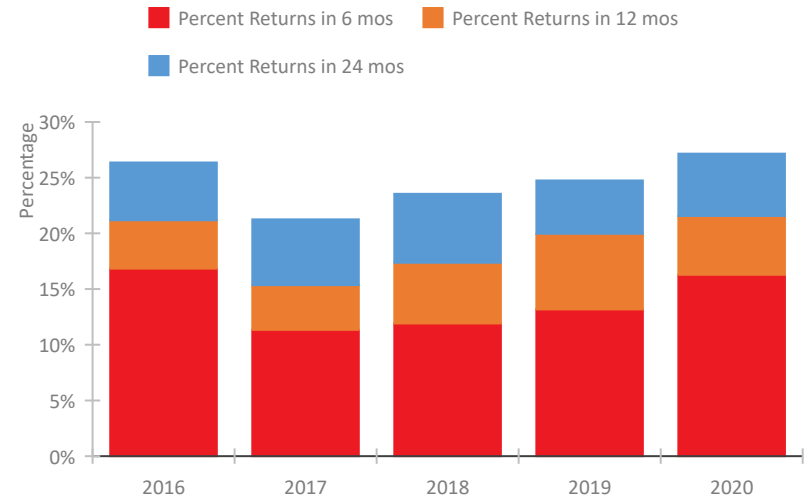


Alaska Continuum of Care Performance Profile

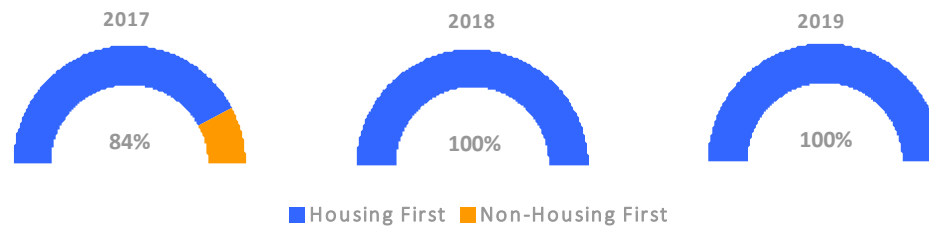
Exits to Permanent Housing by Program Type



Returns to Homelessness Over Time



Proportion of Housing First Projects by Year*



Number of Projects by Year			
	2017	2018	2019
Housing First Projects	16	21	26
Non-Housing First Projects	3	0	0

*In 2020 HUD awarded renewal projects noncompetitively, therefore no new data was collected and Housing First data remains the same from 2019 to 2020.

Data Summary: Alaska

Point-In-Time Count Summary

	2016	2017	2018	2019	2020	2019-20 Change	% Change
Number of Sheltered Persons in Families	409	491	534	516	501	-15	-3%
Number of Unsheltered Persons in Families	4	0	48	7	3	-4	-57%
Number of Sheltered Individuals	1,089	1,060	1,173	1,118	1,224	106	9%
Number of Unsheltered Individuals	438	294	261	266	221	-45	-17%
Total Homeless Persons	1,940	1,845	2,016	1,907	1,949	42	2%
Number of Sheltered Families	134	165	175	158	159	1	1%
Number of Unsheltered Families	1	0	18	3	1	-2	-67%
Number of Total Families	135	165	193	161	160	-1	-1%
Sheltered Chronically Homeless Individuals	84	117	243	134	241	107	80%
Unsheltered Chronically Homeless Individuals	28	99	80	97	86	-11	-11%
Total Chronically Homeless Individuals	112	216	323	231	327	96	42%
Sheltered Veterans	112	95	110	85	82	-3	-4%
Unsheltered Veterans	56	29	22	26	12	-14	-54%
Total Veterans	168	124	132	111	94	-17	-15%
Sheltered Unaccompanied Youth (up to 24)	137	142	150	155	182	27	17%
Unsheltered Unaccompanied Youth (up to 24)	36	20	13	21	6	-15	-71%
Total Unaccompanied Youth (up to 24)	173	162	163	176	188	12	7%

System Performance Measures Summary

	2016	2017	2018	2019	2020	2019-20 Change	% Change
Rate People Return to Homelessness in 6 Months	16.8%	11.3%	11.9%	13.2%	16.3%	3.1%	N/A
Number of People who are Homeless for the First Time	3,763	5,220	5,066	3,661	4,801	1,140	31.1%
Rate People Exit from ES, SH, TH, and RRH to PH	25.7%	22.4%	24.9%	22.2%	12.5%	-9.7%	N/A
Rate People in PSH and OPH Retain or Exit to PH	82.8%	85.2%	94.9%	94.4%	95.1%	0.7%	N/A

Housing Inventory Count Summary

	2016	2017	2018	2019	2020	2019-20 Change	% Change
Emergency Shelter (ES)	1,095	1,130	1,398	1,374	1,410	36	3%
Transitional Housing (TH)	731	698	542	504	475	-29	-6%
Permanent Supportive Housing (PSH)	653	939	948	987	963	-24	-2%
Rapid Re-Housing (RRH)	72	66	215	238	259	21	9%
Other Permanent Housing (OPH)	130	101	71	71	92	21	30%

Award Summary

	2016	2017	2018	2019	2020	2019-20 Change	% Change
Continuum of Care (CoC)	\$3,697,135	\$3,731,246	\$3,925,329	\$4,862,710	\$4,742,326	(\$120,384)	-2%
Emergency Solutions Grants (ESG)	\$371,142	\$508,394	\$380,374	\$397,173	\$416,370	\$19,197	5%
Youth Homelessness Demonstration Program (YHDP)	\$1,506,654	--	\$1,654,023	--	--	--	--