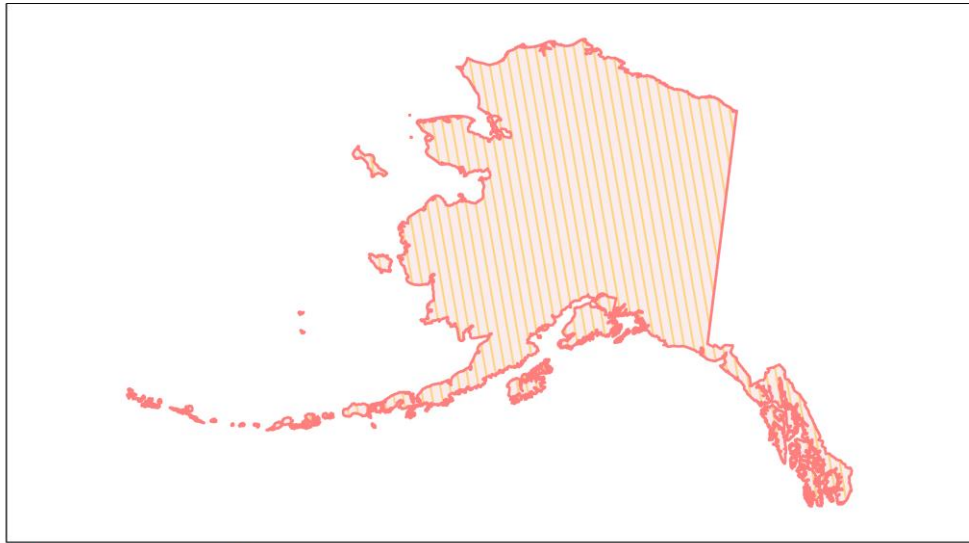
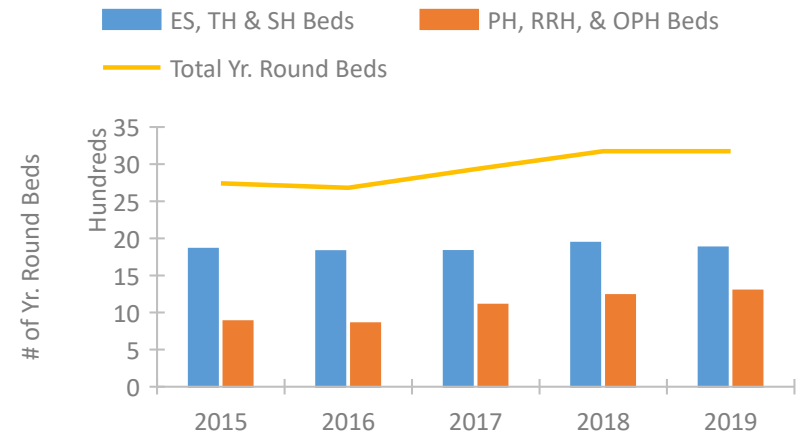


Alaska Continuum of Care Performance Profile

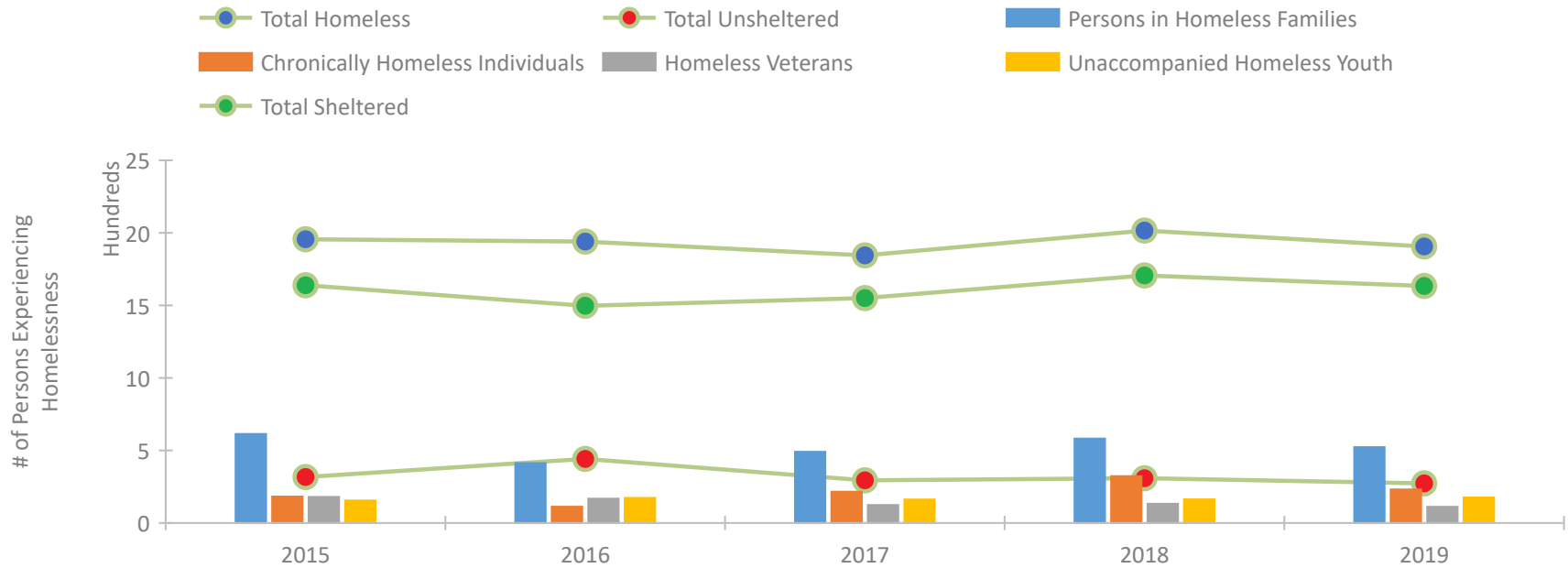


2019 CoC Boundaries 2018 CoC Boundaries

Housing Inventory Count by Program Type

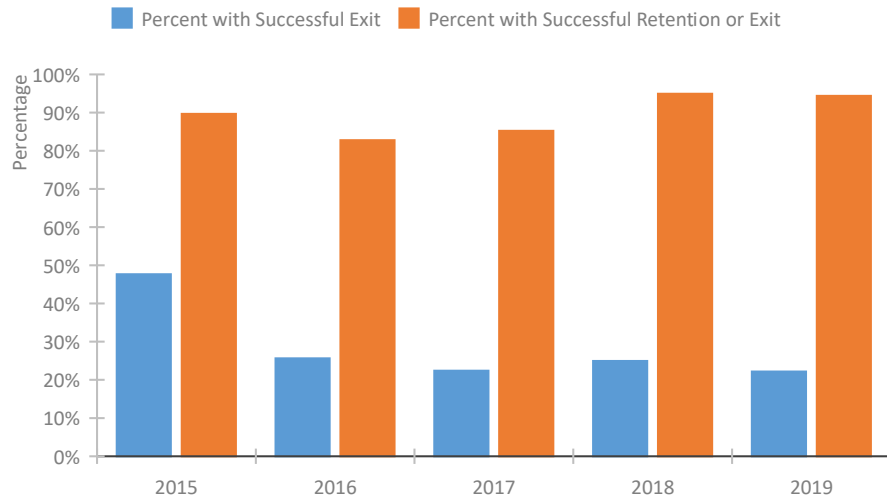


Homeless Population – Point-in-Time (PIT) Count

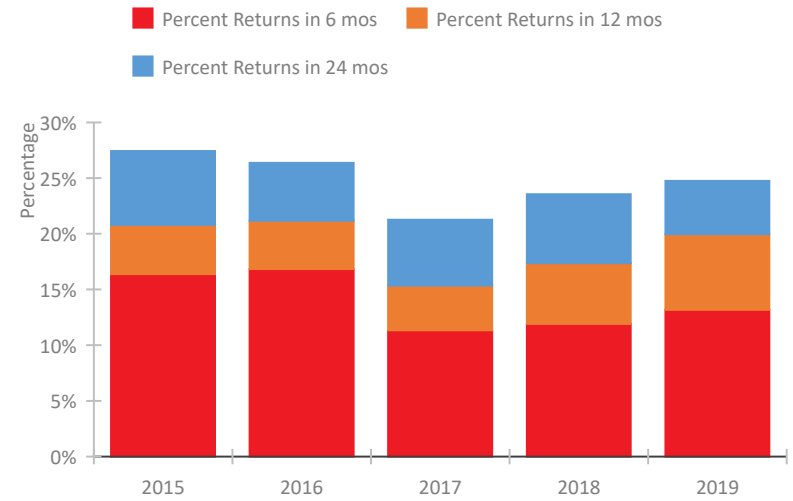


Alaska Continuum of Care Performance Profile

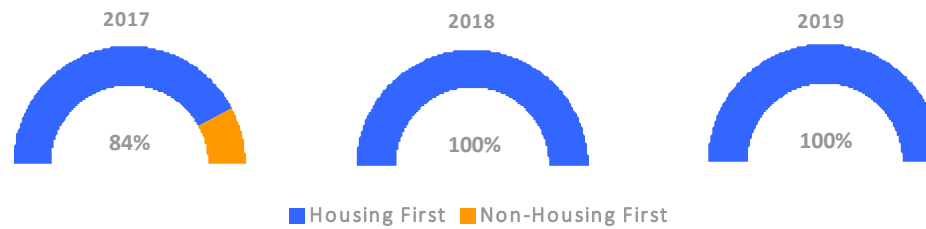
Exits to Permanent Housing by Program Type



Returns to Homelessness Over Time



Proportion of Housing First Projects by Year



Number of Projects by Year

	2017	2018	2019
Housing First Projects	16	21	26
Non-Housing First Projects	3	0	0

Data Summary: Alaska

Point-In-Time Count Summary

	2015	2016	2017	2018	2019	2018-19 Change	% Change
Number of Sheltered Persons in Families	555	409	491	534	516	-18	-3%
Number of Unsheltered Persons in Families	59	4	0	48	7	-41	-85%
Number of Sheltered Individuals	1,084	1,089	1,060	1,173	1,118	-55	-5%
Number of Unsheltered Individuals	258	438	294	261	266	5	2%
Total Homeless Persons	1,956	1,940	1,845	2,016	1,907	-109	-5%
Number of Sheltered Families	163	134	165	175	158	-17	-10%
Number of Unsheltered Families	17	1	0	18	3	-15	-83%
Number of Total Families	180	135	165	193	161	-32	-17%
Sheltered Chronically Homeless Individuals	70	84	117	243	134	-109	-45%
Unsheltered Chronically Homeless Individuals	112	28	99	80	97	17	21%
Total Chronically Homeless Individuals	182	112	216	323	231	-92	-28%
Sheltered Veterans	149	112	95	110	85	-25	-23%
Unsheltered Veterans	31	56	29	22	26	4	18%
Total Veterans	180	168	124	132	111	-21	-16%
Sheltered Unaccompanied Youth (up to 24)	123	137	142	150	155	5	3%
Unsheltered Unaccompanied Youth (up to 24)	32	36	20	13	21	8	62%
Total Unaccompanied Youth (up to 24)	155	173	162	163	176	13	8%

System Performance Measures Summary

	2015	2016	2017	2018	2019	2018-19 Change	% Change
Rate People Return to Homelessness in 6 Months	16.4%	16.8%	11.3%	11.9%	13.2%	1.3%	N/A
Number of People who are Homeless for the First Time	3,655	3,763	5,220	5,066	3,661	-1,405	-27.7%
Rate People Exit from ES, SH, TH, and RRH to PH	47.7%	25.7%	22.4%	24.9%	22.2%	-2.8%	N/A
Rate People in PSH and OPH Retain or Exit to PH	89.7%	82.8%	85.2%	94.9%	94.4%	-0.6%	N/A

Housing Inventory Count Summary

	2015	2016	2017	2018	2019	2018-19 Change	% Change
Emergency Shelter (ES)	1,184	1,095	1,130	1,398	1,374	-24	-2%
Transitional Housing (TH)	676	731	698	542	504	-38	-7%
Permanent Supportive Housing (PSH)	776	653	939	948	987	39	4%
Rapid Re-Housing (RRH)	35	72	66	215	238	23	11%
Other Permanent Housing (OPH)	71	130	101	71	71	0	0%

Award Summary

	2015	2016	2017	2018	2019	2018-19 Change	% Change
Continuum of Care (CoC)	\$3,712,473	\$3,697,135	\$3,731,246	\$3,925,329	\$4,862,710	\$937,381	24%
Emergency Solutions Grants (ESG)	\$366,360	\$371,142	\$508,394	\$380,374	\$397,173	\$16,799	4%
Youth Homelessness Demonstration Program (YHDP)	N/A	\$1,506,654	--	\$1,654,023	--	--	--