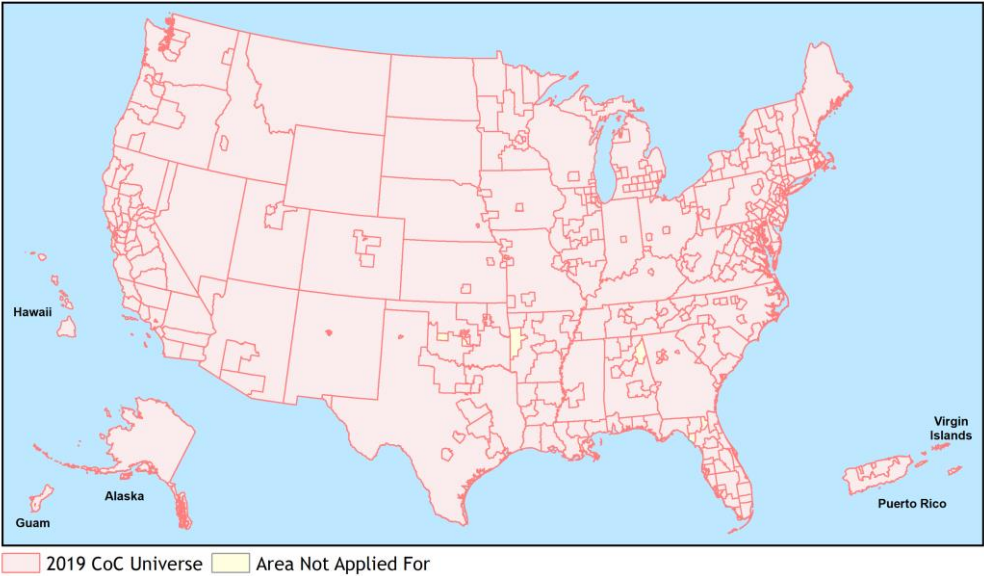
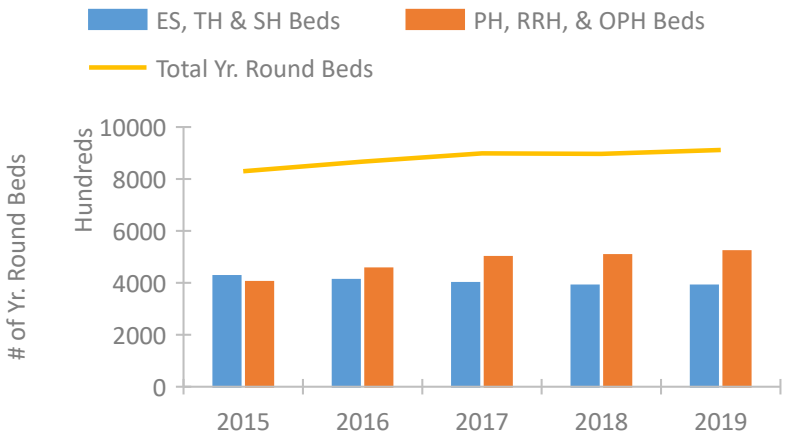


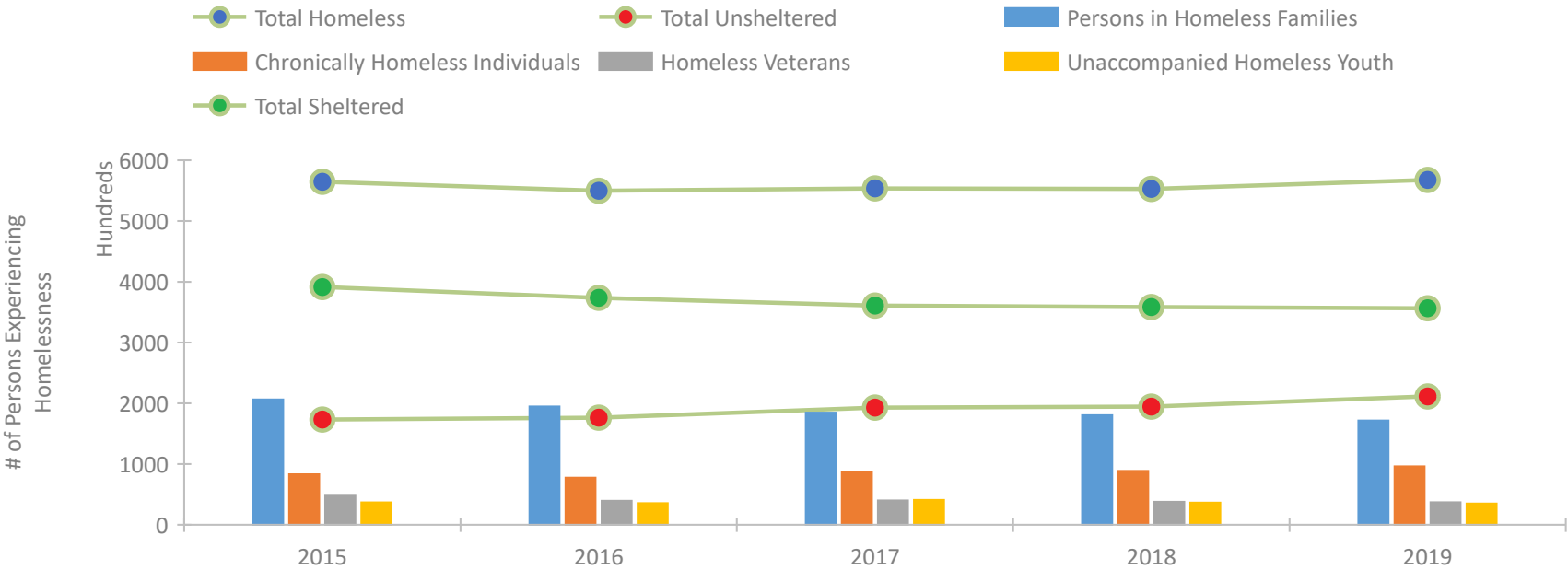
Continuum of Care National Performance Profile



Housing Inventory Count by Program Type

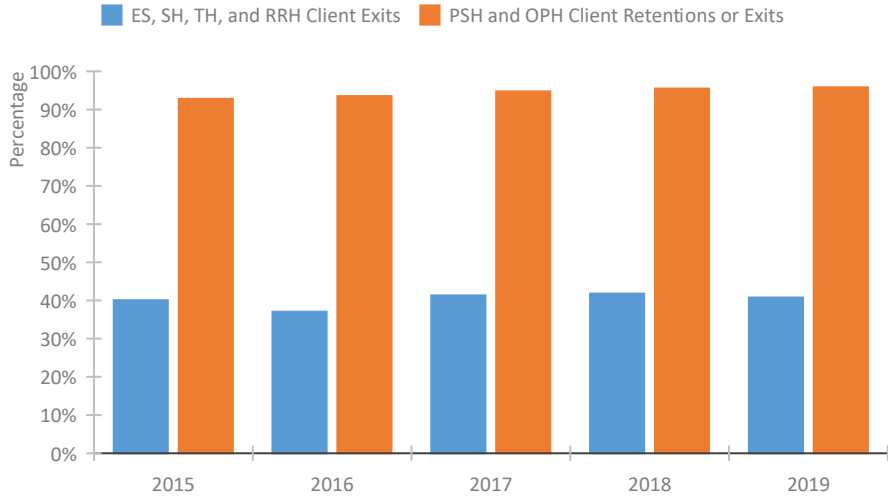


Homeless Population – Point-in-Time (PIT) Count

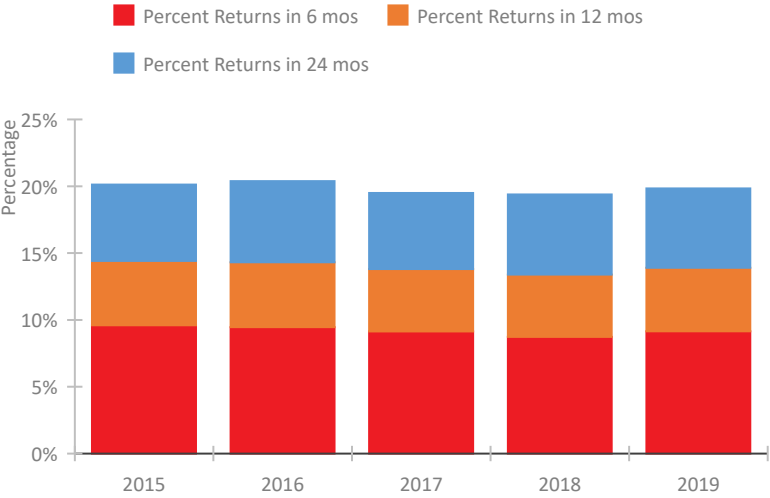


Continuum of Care National Performance Profile

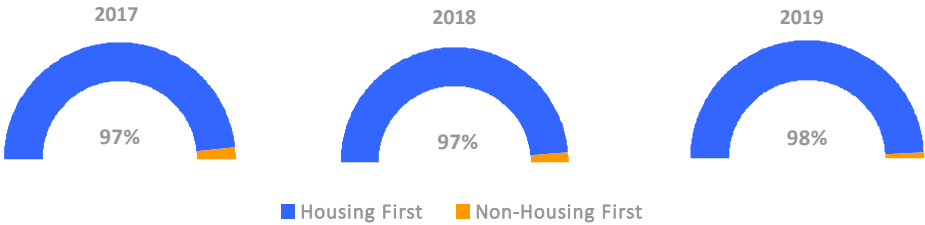
Exits to Permanent Housing by Program Type



Returns to Homelessness Over Time



Proportion of Housing First Projects by Year



Number of Projects by Year			
	2017	2018	2019
Housing First Projects	8,039	7,038	6,810
Non-Housing First Projects	265	203	133

National Data Summary

Point-In-Time Count Summary

	2015	2016	2017	2018	2019	2018-19 Change	% Change
Number of Sheltered Persons in Families	185,824	175,563	167,723	164,023	156,891	-7,132	-4%
Number of Unsheltered Persons in Families	20,462	19,153	16,938	16,390	14,779	-1,611	-10%
Number of Sheltered Individuals	205,616	198,008	193,144	194,340	199,531	5,191	3%
Number of Unsheltered Individuals	152,806	157,204	175,937	178,077	196,514	18,437	10%
Total Homeless Persons	564,708	549,928	553,742	552,830	567,715	14,885	3%
Number of Sheltered Families	58,064	55,265	52,829	51,513	49,344	-2,169	-4%
Number of Unsheltered Families	6,133	6,000	5,142	4,829	4,348	-481	-10%
Number of Total Families	64,197	61,265	57,971	56,342	53,692	-2,650	-5%
Sheltered Chronically Homeless Individuals	28,355	24,596	26,629	30,754	35,200	4,446	14%
Unsheltered Chronically Homeless Individuals	54,815	52,890	60,333	57,886	60,941	3,055	5%
Total Chronically Homeless Individuals	83,170	77,486	86,962	88,640	96,141	7,501	8%
Sheltered Veterans	31,505	26,404	24,690	23,312	22,740	-572	-2%
Unsheltered Veterans	16,220	13,067	15,366	14,566	14,345	-221	-2%
Total Veterans	47,725	39,471	40,056	37,878	37,085	-793	-2%
Sheltered Unaccompanied Youth (up to 24)	19,838	19,188	18,542	18,011	17,708	-303	-2%
Unsheltered Unaccompanied Youth (up to 24)	17,069	16,498	22,257	18,350	17,330	-1,020	-6%
Total Unaccompanied Youth (up to 24)	36,907	35,686	40,799	36,361	35,038	-1,323	-4%

System Performance Measures Summary

	2015	2016	2017	2018	2019	2018-19 Change	% Change
Rate People Return to Homelessness in 6 Months	9.6%	9.5%	9.1%	8.7%	9.1%	0.4%	N/A
Number of People who are Homeless for the First Time	836,186	852,330	834,357	818,893	801,368	-17,525	-2.1%
Rate People Exit from ES, SH, TH, and RRH to PH	40.1%	37.1%	41.3%	41.8%	40.8%	-1%	N/A
Rate People in PSH and OPH Retain or Exit to PH	92.8%	93.5%	94.8%	95.5%	95.8%	0.3%	N/A

Housing Inventory Count Summary

	2015	2016	2017	2018	2019	2018-19 Change	% Change
Emergency Shelter (ES)	264,440	264,629	277,537	286,203	291,837	5,634	2%
Safe Haven (SH)	2,043	1,907	1,653	2,390	2,266	-124	-5%
Transitional Housing (TH)	159,784	144,749	120,249	101,029	95,446	-5,583	-6%
Permanent Supportive Housing (PSH)	319,212	340,906	353,800	361,386	369,293	7,907	2%
Rapid Re-Housing (RRH)	58,615	75,686	93,718	109,095	112,961	3,866	4%
Other Permanent Housing (OPH)	24,329	37,770	52,102	36,790	39,854	3,064	8%

Award Summary

	2015	2016	2017	2018	2019	2018-19 Change	% Change
Continuum of Care (CoC)	\$1,943,317,257	\$1,953,210,272	\$2,033,244,110	\$2,165,930,757	\$2,286,521,843	\$120,591,086	6%
Emergency Solutions Grants (ESG)	\$270,000,000	\$270,000,000	\$310,000,000	\$270,000,000	\$280,000,000	\$10,000,000	4%
Youth Homelessness Demonstration Program (YHDP)	N/A	\$33,000,001	\$43,000,000	\$75,000,000	--		