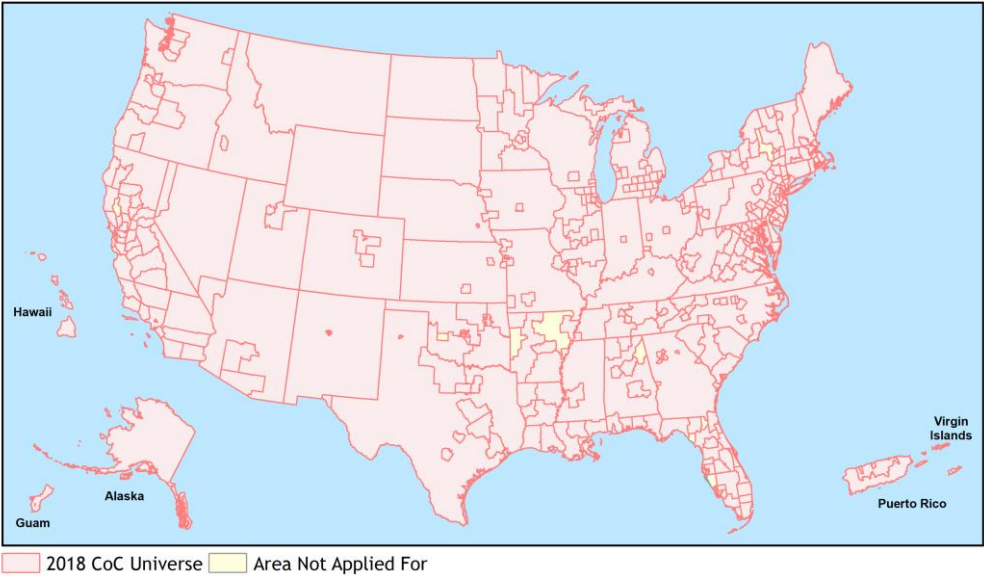
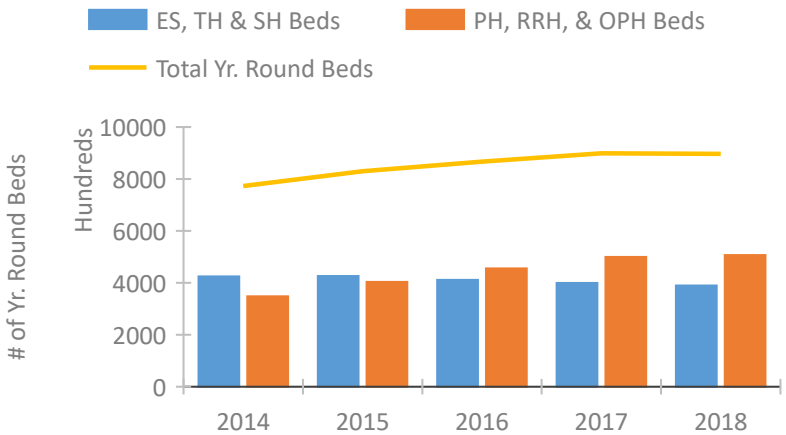


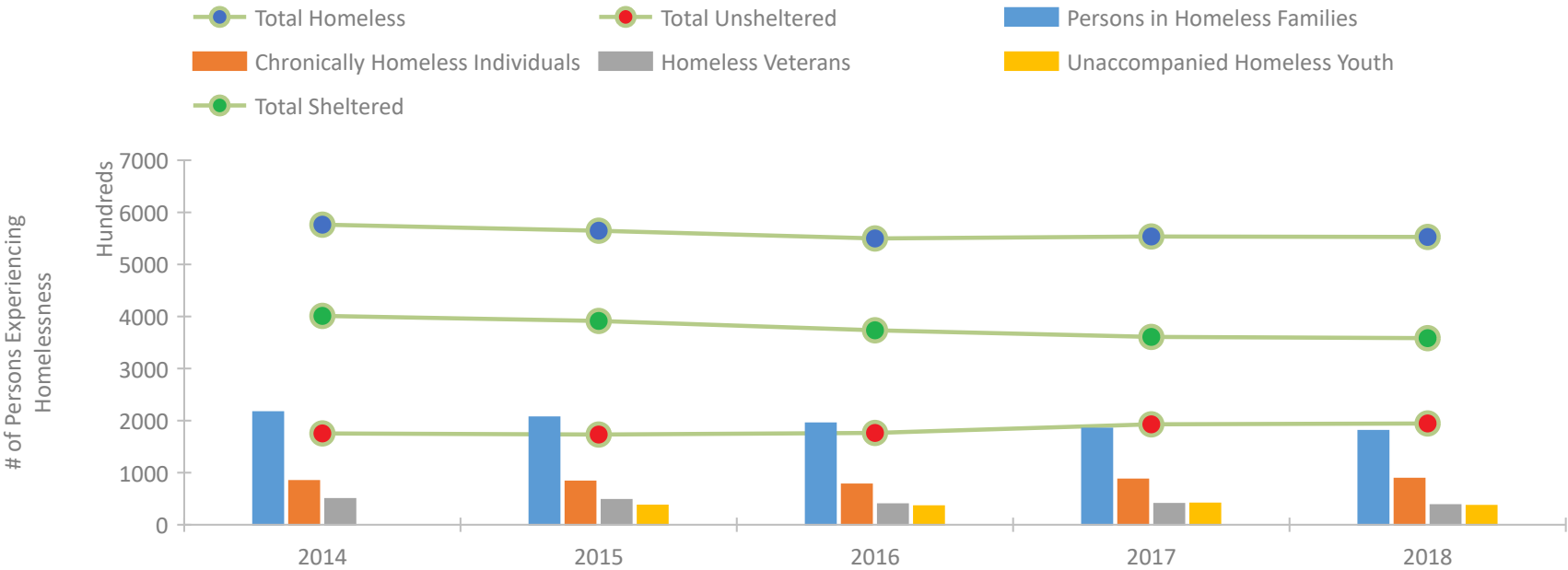
Continuum of Care National Performance Profile



Housing Inventory Count by Program Type

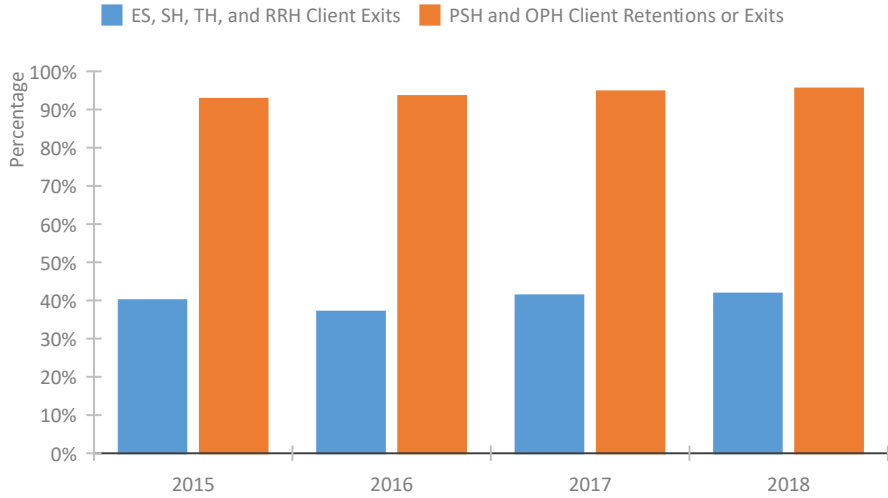


Homeless Population – Point-in-Time (PIT) Count

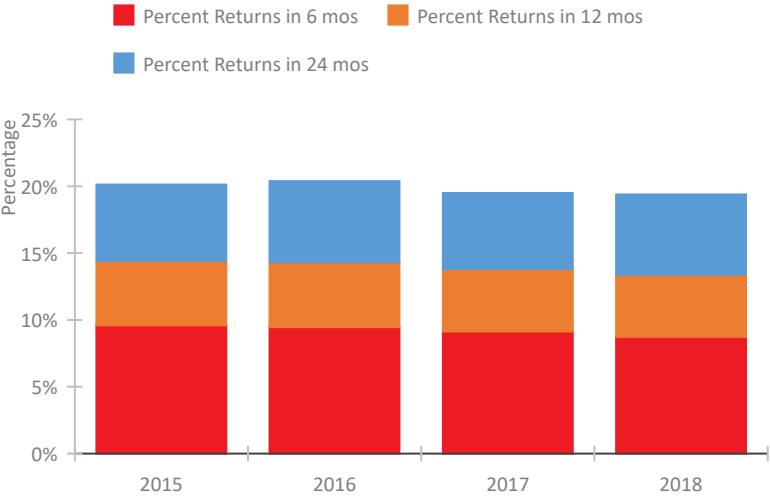


Continuum of Care National Performance Profile

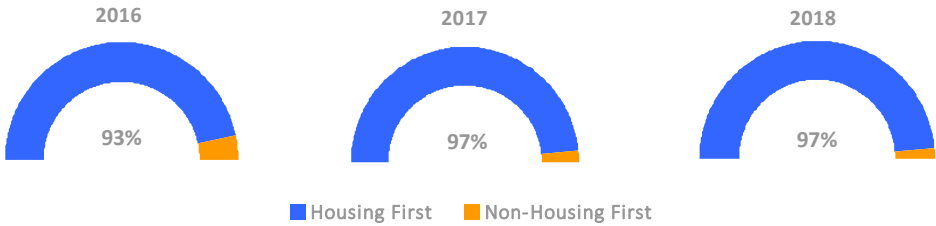
Exits to Permanent Housing by Program Type



Returns to Homelessness Over Time



Proportion of Housing First Projects by Year



Number of Projects by Year

	2016	2017	2018
Housing First Projects	6,570	8,039	7,038
Non-Housing First Projects	461	265	203

National Data Summary

Point-In-Time Count Summary

	2014	2015	2016	2017	2018	2017-18 Change	% Change
Number of Sheltered Persons in Families	191,903	185,824	175,563	167,723	164,023	-3,700	-2%
Number of Unsheltered Persons in Families	24,358	20,462	19,153	16,938	16,390	-548	-3%
Number of Sheltered Individuals	205,783	203,133	195,553	190,815	192,157	1,342	1%
Number of Unsheltered Individuals	146,766	150,403	155,546	173,156	175,969	2,813	2%
Total Homeless Persons	568,810	559,822	545,815	548,632	548,539	-93	0%
Number of Sheltered Families	59,629	58,064	55,265	52,829	51,513	-1,316	-2%
Number of Unsheltered Families	7,984	6,133	6,000	5,142	4,829	-313	-6%
Number of Total Families	67,613	64,197	61,265	57,971	56,342	-1,629	-3%
Sheltered Chronically Homeless Individuals	31,203	28,355	24,596	26,629	30,754	4,125	15%
Unsheltered Chronically Homeless Individuals	52,786	54,815	52,890	60,333	57,886	-2,447	-4%
Total Chronically Homeless Individuals	83,989	83,170	77,486	86,962	88,640	1,678	2%
Sheltered Veterans	32,119	31,505	26,404	24,690	23,312	-1,378	-6%
Unsheltered Veterans	17,570	16,220	13,067	15,366	14,566	-800	-5%
Total Veterans	49,689	47,725	39,471	40,056	37,878	-2,178	-5%
Sheltered Unaccompanied Youth (up to 24)	--	19,838	19,188	18,542	18,011	-531	-3%
Unsheltered Unaccompanied Youth (up to 24)	--	17,069	16,498	22,257	18,350	-3,907	-18%
Total Unaccompanied Youth (up to 24)	--	36,907	35,686	40,799	36,361	-4,438	-11%

System Performance Measures Summary

	2014	2015	2016	2017	2018	2017-18 Change	% Change
Rate People Return to Homelessness in 6 Months	N/A	9.6%	9.5%	9.1%	8.7%	-0.4%	N/A
Number of People who are Homeless for the First Time	N/A	836,186	852,330	834,357	818,893	-15,464	-1.9%
Rate People Exit from ES, SH, TH, and RRH to PH	N/A	40.1%	37.1%	41.3%	41.8%	0.5%	N/A
Rate People in PSH and OPH Retain or Exit to PH	N/A	92.8%	93.5%	94.8%	95.5%	0.8%	N/A

Housing Inventory Count Summary

	2014	2015	2016	2017	2018	2017-18 Change	% Change
Emergency Shelter (ES)	249,497	264,440	264,629	277,537	286,203	8,666	3%
Safe Haven (SH)	2,159	2,043	1,907	1,653	2,390	737	45%
Transitional Housing (TH)	173,224	159,784	144,749	120,249	101,029	-19,220	-16%
Permanent Supportive Housing (PSH)	300,282	319,212	340,906	353,800	361,386	7,586	2%
Rapid Re-Housing (RRH)	36,176	58,615	75,686	93,718	109,095	15,377	16%
Other Permanent Housing (OPH)	9,843	24,329	37,770	52,102	36,790	-15,312	-29%

Award Summary

	2014	2015	2016	2017	2018	2017-18 Change	% Change
Continuum of Care (CoC)	\$1,810,559,994	\$1,943,317,257	\$1,953,210,272	\$2,033,244,110	\$2,165,930,757	\$132,686,647	7%
Emergency Solutions Grants (ESG)	\$246,019,466	\$267,455,298	\$268,199,342	\$309,026,711	\$270,000,000	(\$39,026,711)	-13%
Youth Homelessness Demonstration Program (YHDP)	N/A	N/A	\$33,000,001	\$43,000,000	\$75,000,000	\$32,000,000	74%