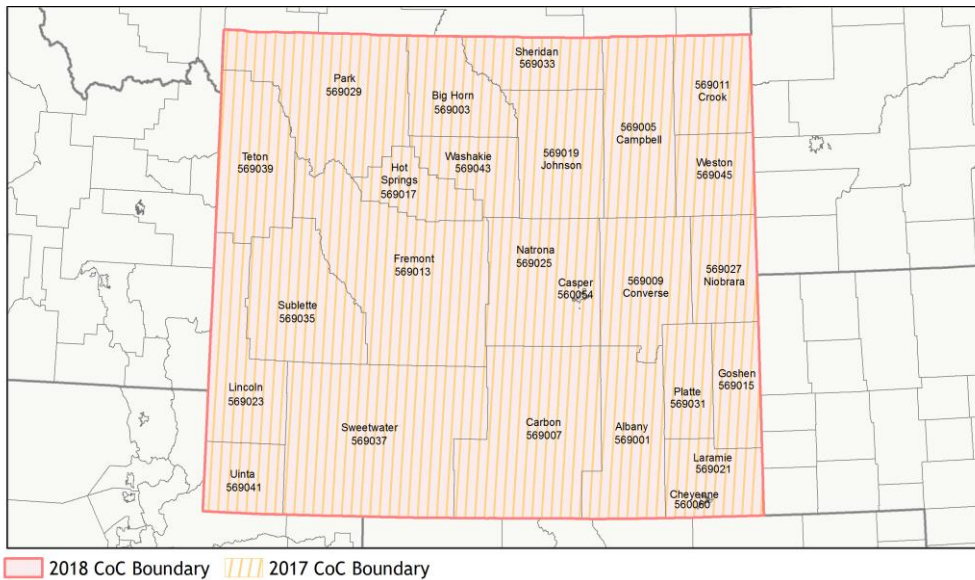
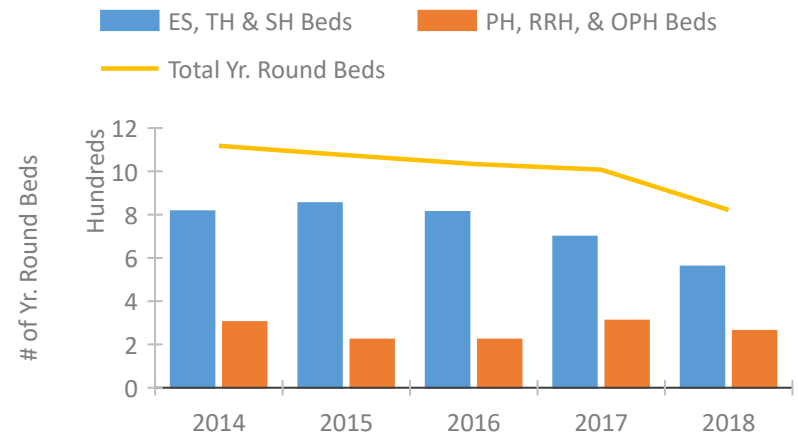


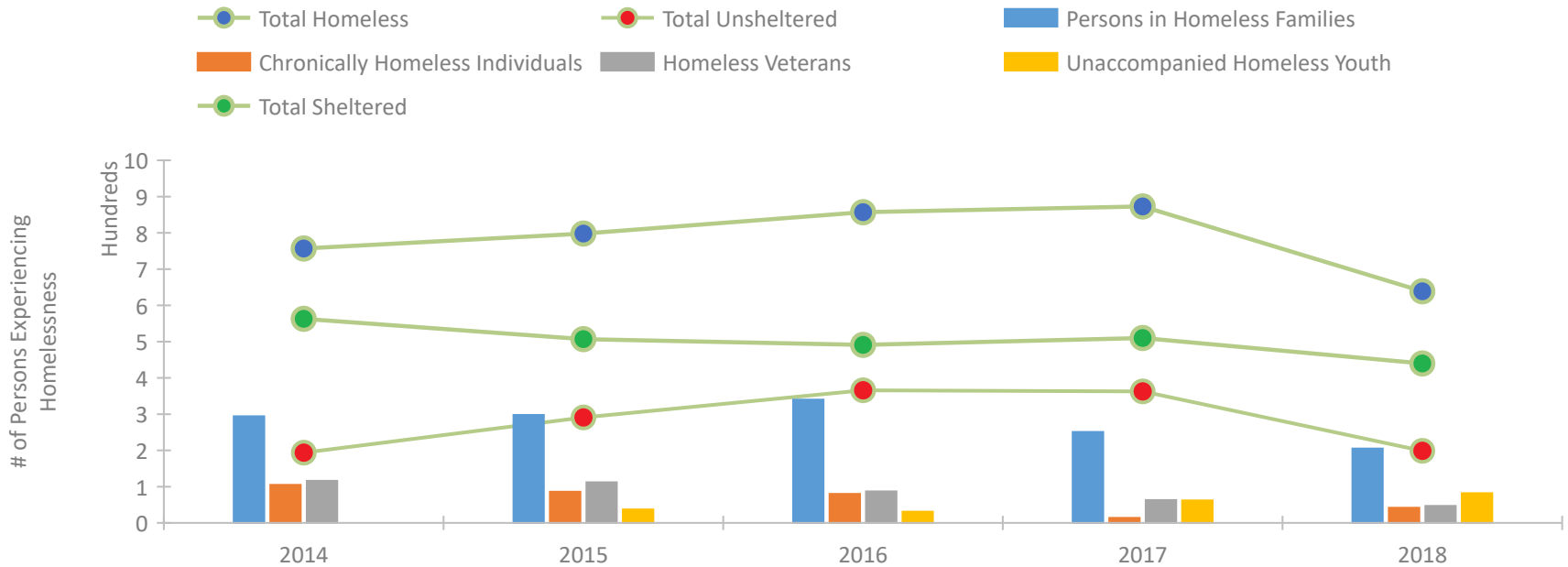
CoC Performance Profile WY-500 Wyoming Statewide CoC



Housing Inventory Count by Program Type

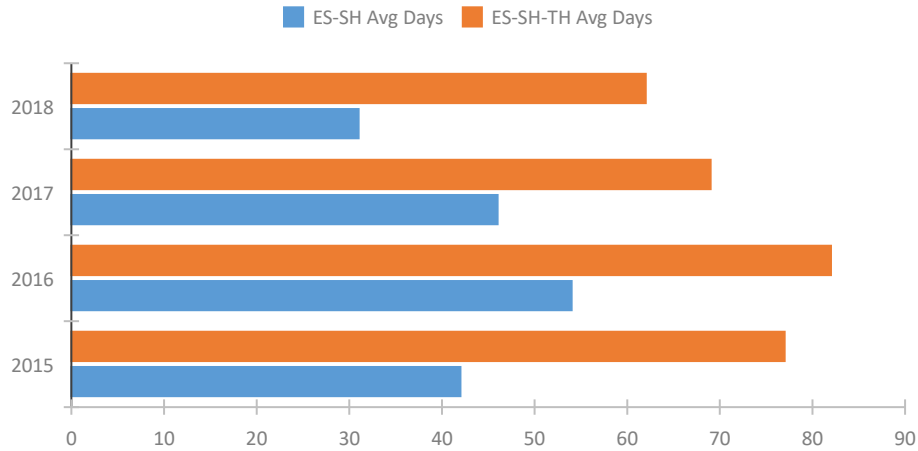


Homeless Population – Point-in-Time (PIT) Count

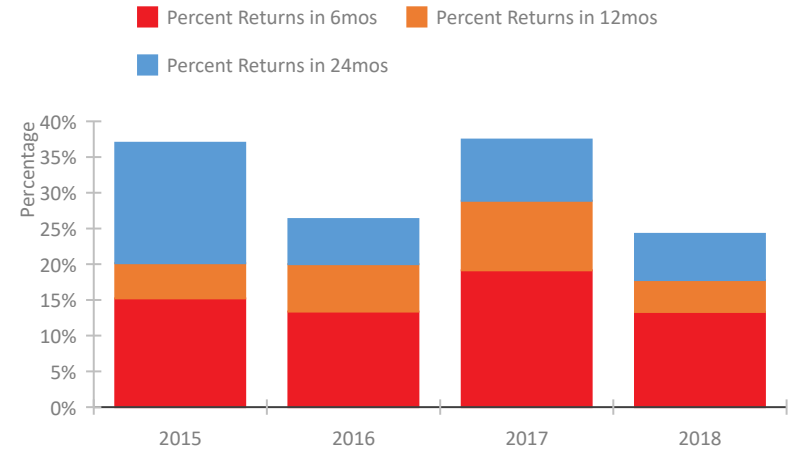


CoC Performance Profile WY-500 Wyoming Statewide CoC

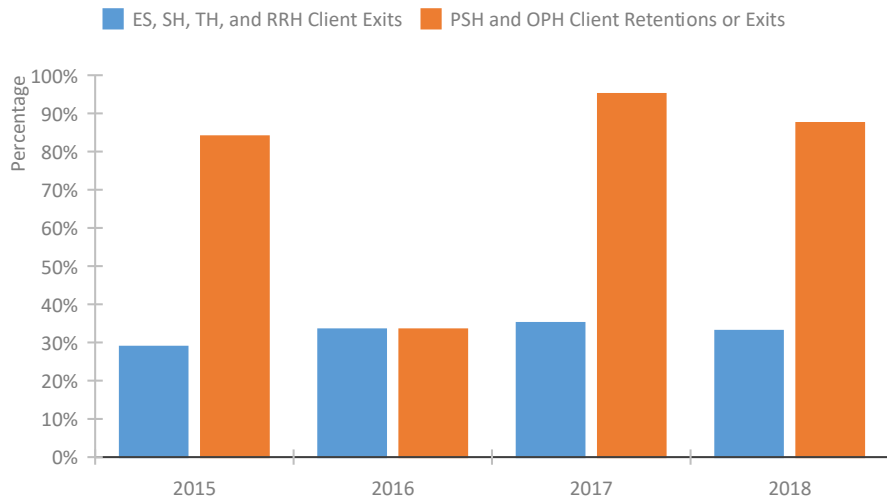
Length of Time Homeless



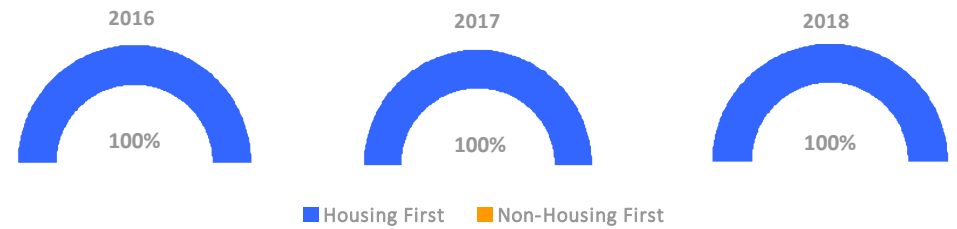
Returns to Homelessness Over Time



Exits to Permanent Housing by Program Type



Proportion of Housing First Projects by Year



Number of Projects by Year

	2016	2017	2018
Housing First Projects	3	3	3
Non-Housing First Projects	0	0	0

Data Summary: WY-500 Wyoming Statewide CoC

Point-In-Time Count Summary

	2014	2015	2016	2017	2018	2017-18 Change	% Change
Number of Sheltered Persons in Families	236	215	214	127	141	14	11%
Number of Unsheltered Persons in Families	58	83	126	124	64	-60	-48%
Number of Sheltered Individuals	327	292	277	383	299	-84	-22%
Number of Unsheltered Individuals	136	208	240	239	135	-104	-44%
Total Homeless Persons	757	798	857	873	639	-234	-27%
Number of Sheltered Families	76	71	77	55	56	1	2%
Number of Unsheltered Families	13	22	33	41	21	-20	-49%
Number of Total Families	89	93	110	96	77	-19	-20%
Sheltered Chronically Homeless Individuals	86	35	29	14	42	28	200%
Unsheltered Chronically Homeless Individuals	19	51	51	0	0	0	--
Total Chronically Homeless Individuals	105	86	80	14	42	28	200%
Sheltered Veterans	95	83	56	50	47	-3	-6%
Unsheltered Veterans	21	29	31	13	0	-13	-100%
Total Veterans	116	112	87	63	47	-16	-25%
Sheltered Unaccompanied Youth (up to 24)	--	26	24	43	68	25	58%
Unsheltered Unaccompanied Youth (up to 24)	--	11	7	19	14	-5	-26%
Total Unaccompanied Youth (up to 24)	--	37	31	62	82	20	32%

System Performance Measures Summary

	2014	2015	2016	2017	2018	2017-18 Change	% Change
Average Length of Time Homeless (days)	N/A	77	82	69	62	-7	-10.1%
Rate People Return to Homelessness in 6 Months	N/A	15.2%	13.4%	19.1%	13.3%	-5.8%	N/A
Number of People who are Homeless for the First Time	N/A	2147	1877	2218	2106	-112	-5%
Rate People Exit from ES, SH, TH, and RRH to PH	N/A	28.9%	33.4%	35.1%	33.0%	-2.1%	N/A
Rate People in PSH and OPH Retain or Exit to PH	N/A	84.0%	33.4%	95.1%	87.5%	-7.6%	N/A

Housing Inventory Count Summary

	2014	2015	2016	2017	2018	2017-18 Change	% Change
Emergency Shelter (ES)	445	450	511	361	345	-16	-4%
Transitional Housing (TH)	370	403	301	337	215	-122	-36%
Permanent Supportive Housing (PSH)	236	207	208	285	230	-55	-19%
Rapid Re-Housing (RRH)	67	15	8	25	32	7	28%

Award Summary

	2014	2015	2016	2017	2018	2017-18 Change	% Change
Continuum of Care (CoC)	\$327,002	\$300,615	\$291,611	\$292,970	\$288,790	(\$4,180)	-1%
ESG (WY state recipient - no direct funding)	\$275,855	\$301,683	\$311,565	\$310,296	\$313,532	\$3,236	1%
Youth Homelessness Demonstration Program (YHDP)	N/A	N/A	--	--	\$1,081,363	--	--