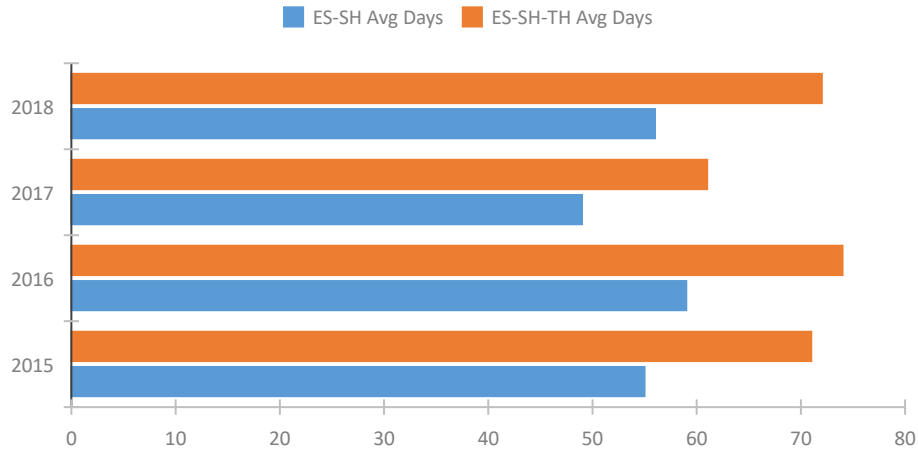
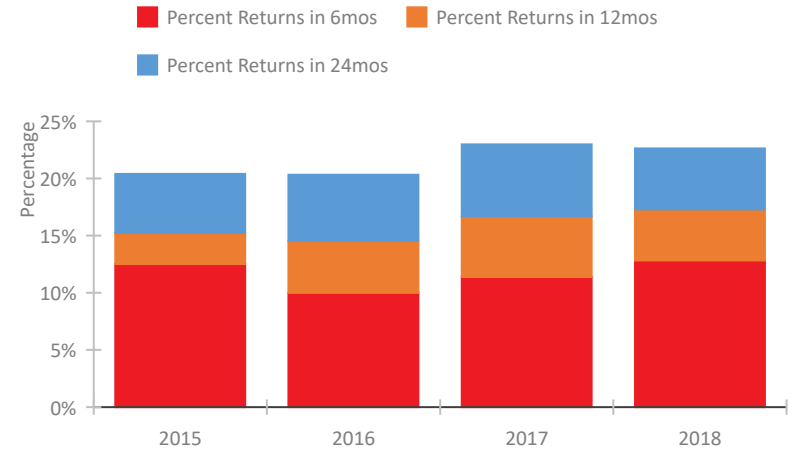


CoC Performance Profile WV-508 West Virginia Balance of State CoC

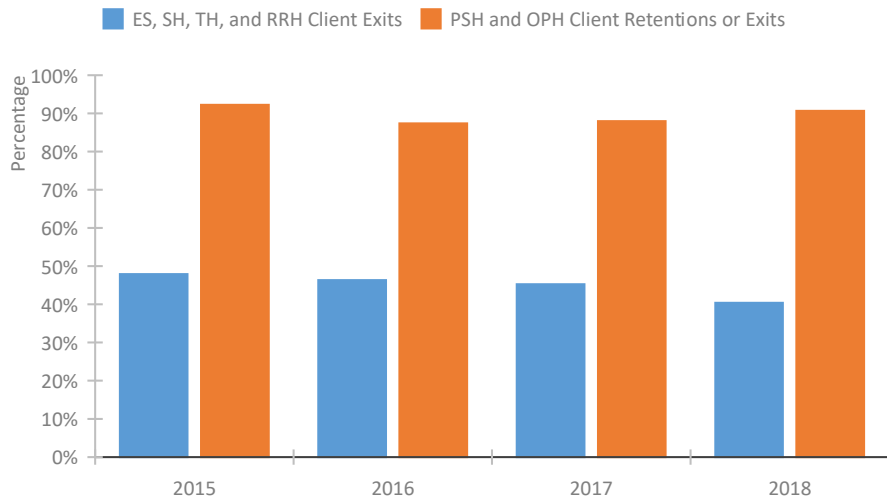
Length of Time Homeless



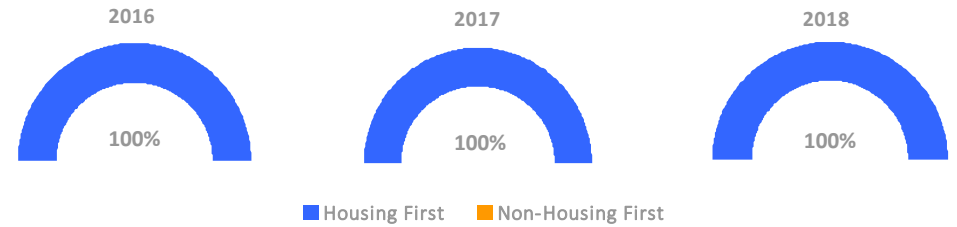
Returns to Homelessness Over Time



Exits to Permanent Housing by Program Type



Proportion of Housing First Projects by Year



Number of Projects by Year

	2016	2017	2018
Housing First Projects	26	23	23
Non-Housing First Projects	0	0	0

Data Summary: WV-508 West Virginia Balance of State CoC

Point-In-Time Count Summary

	2014	2015	2016	2017	2018	2017-18 Change	% Change
Number of Sheltered Persons in Families	200	153	175	116	111	-5	-4%
Number of Unsheltered Persons in Families	112	67	0	16	4	-12	-75%
Number of Sheltered Individuals	740	609	489	451	422	-29	-6%
Number of Unsheltered Individuals	286	280	84	84	91	7	8%
Total Homeless Persons	1,338	1,109	748	667	628	-39	-6%
Number of Sheltered Families	61	47	55	41	35	-6	-15%
Number of Unsheltered Families	40	21	0	4	1	-3	-75%
Number of Total Families	101	68	55	45	36	-9	-20%
Sheltered Chronically Homeless Individuals	180	118	54	54	51	-3	-6%
Unsheltered Chronically Homeless Individuals	129	112	28	39	41	2	5%
Total Chronically Homeless Individuals	309	230	82	93	92	-1	-1%
Sheltered Veterans	255	183	91	73	77	4	5%
Unsheltered Veterans	24	63	8	9	16	7	78%
Total Veterans	279	246	99	82	93	11	13%
Sheltered Unaccompanied Youth (up to 24)	--	49	34	36	20	-16	-44%
Unsheltered Unaccompanied Youth (up to 24)	--	29	11	4	4	0	0%
Total Unaccompanied Youth (up to 24)	--	78	45	40	24	-16	-40%

System Performance Measures Summary

	2014	2015	2016	2017	2018	2017-18 Change	% Change
Average Length of Time Homeless (days)	N/A	71	74	61	72	11	18%
Rate People Return to Homelessness in 6 Months	N/A	12.5%	10.0%	11.4%	12.8%	1.4%	N/A
Number of People who are Homeless for the First Time	N/A	2855	2818	2505	2251	-254	-10.1%
Rate People Exit from ES, SH, TH, and RRH to PH	N/A	47.9%	46.3%	45.3%	40.4%	-4.9%	N/A
Rate People in PSH and OPH Retain or Exit to PH	N/A	92.3%	87.4%	88.0%	90.7%	2.7%	N/A

Housing Inventory Count Summary

	2014	2015	2016	2017	2018	2017-18 Change	% Change
Emergency Shelter (ES)	804	745	702	793	773	-20	-3%
Transitional Housing (TH)	353	271	241	146	128	-18	-12%
Permanent Supportive Housing (PSH)	620	587	821	672	680	8	1%
Rapid Re-Housing (RRH)	66	136	252	168	277	109	65%
Other Permanent Housing (OPH)	--	42	34	215	46	-169	-79%

Award Summary

	2014	2015	2016	2017	2018	2017-18 Change	% Change
Continuum of Care (CoC)	\$3,610,109	\$3,806,212	\$4,018,831	\$4,327,355	\$4,375,910	\$48,555	1%
ESG (WV state recipient - no direct funding)	\$1,455,208	\$1,560,544	\$1,541,846	\$1,694,366	\$1,518,431	(\$175,935)	-10%