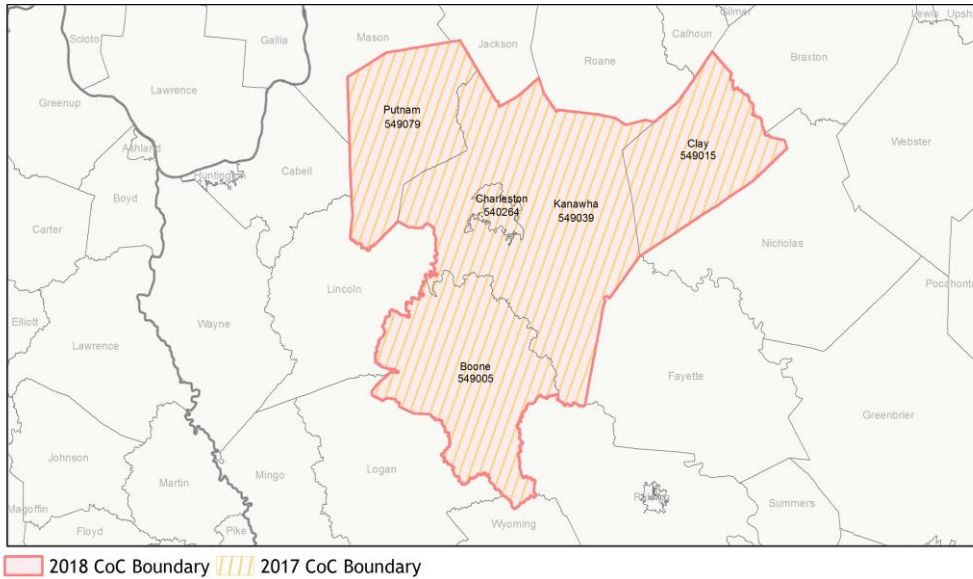
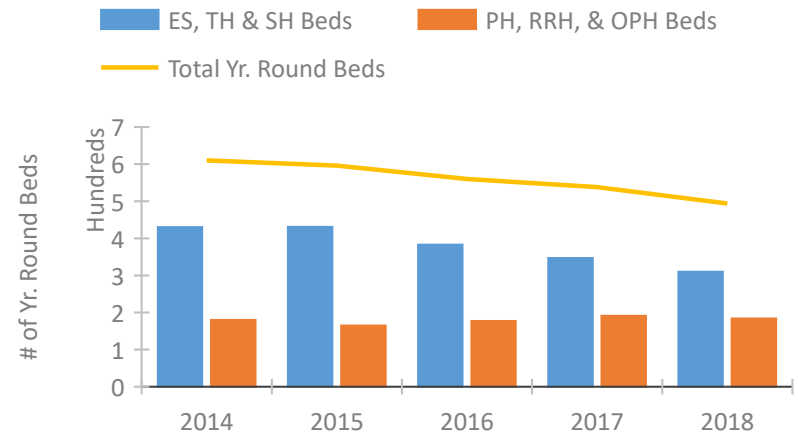


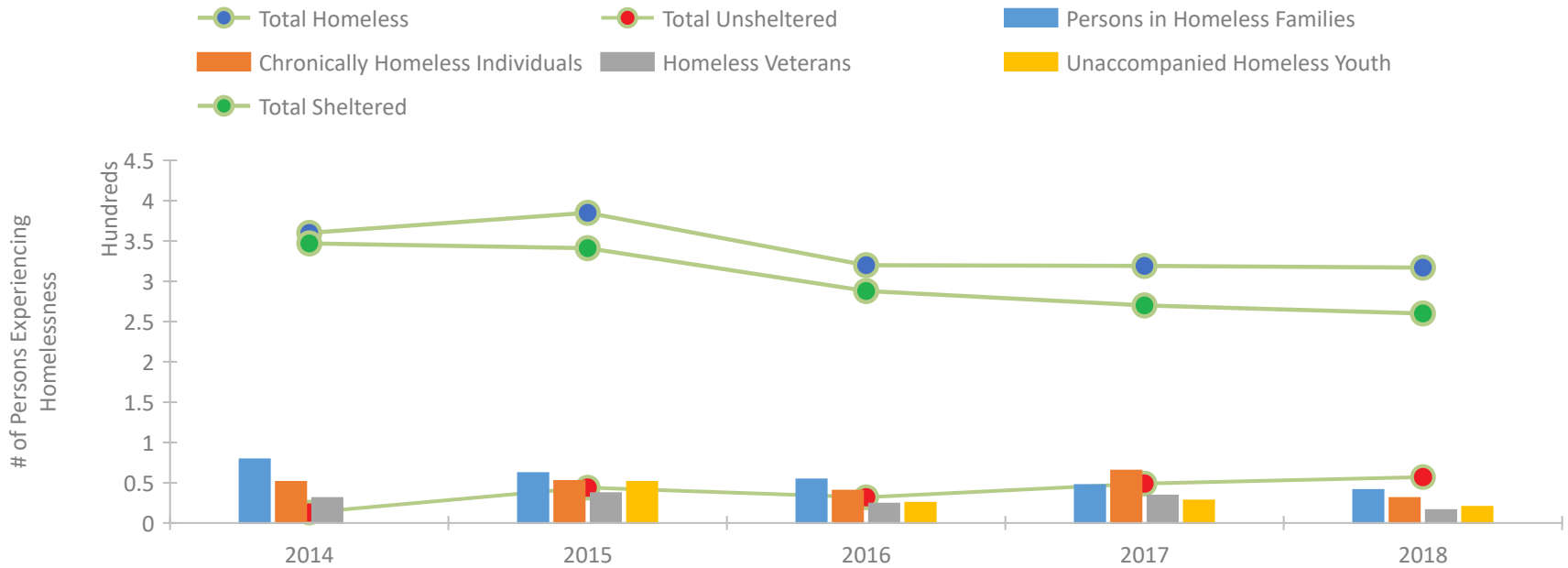
CoC Performance Profile WV-503 Charleston/Kanawha, Putnam, Boone, Clay Counties CoC



Housing Inventory Count by Program Type

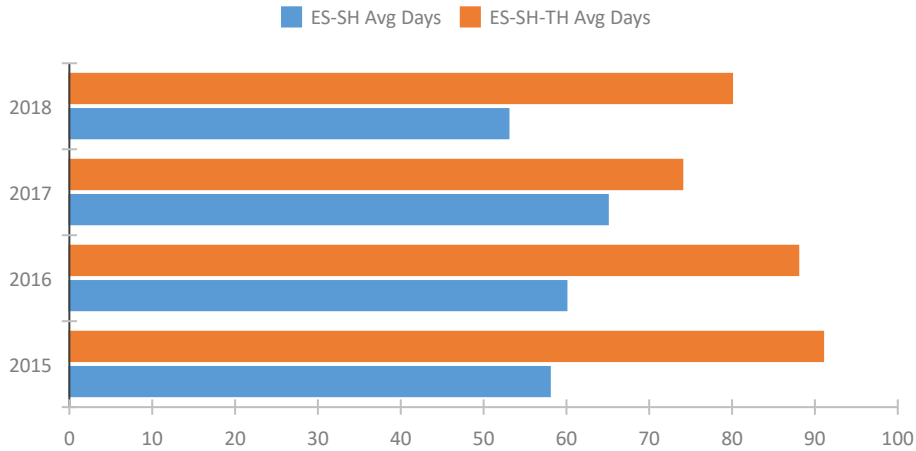


Homeless Population – Point-in-Time (PIT) Count

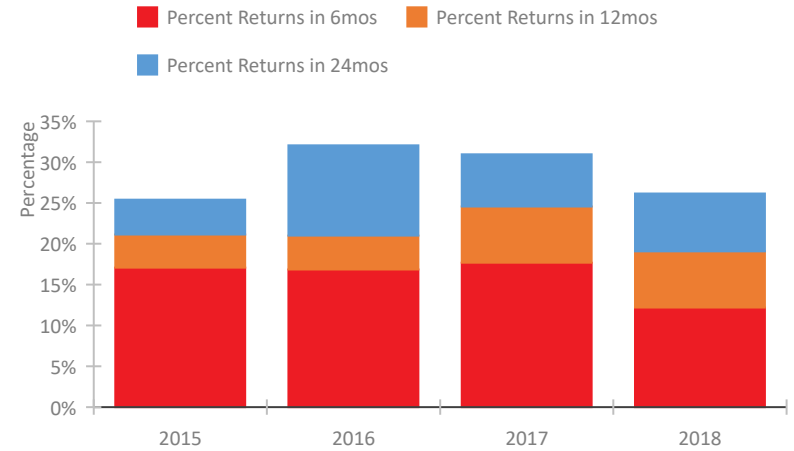


CoC Performance Profile WV-503 Charleston/Kanawha, Putnam, Boone, Clay Counties CoC

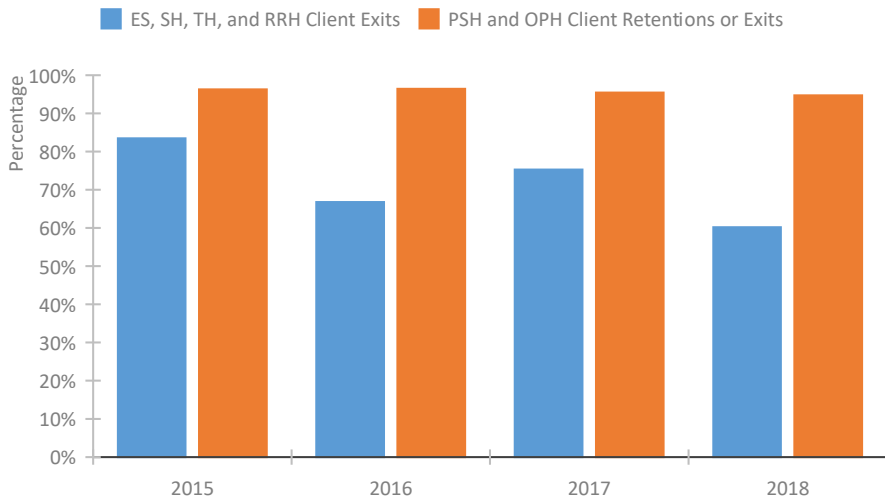
Length of Time Homeless



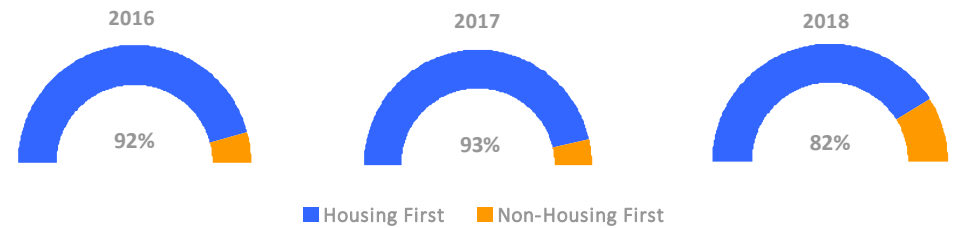
Returns to Homelessness Over Time



Exits to Permanent Housing by Program Type



Proportion of Housing First Projects by Year



Number of Projects by Year

	2016	2017	2018
Housing First Projects	11	13	9
Non-Housing First Projects	1	1	2

Data Summary: WV-503 Charleston/Kanawha, Putnam, Boone, Clay Counties CoC

Point-In-Time Count Summary

	2014	2015	2016	2017	2018	2017-18 Change	% Change
Number of Sheltered Persons in Families	79	62	54	47	41	-6	-13%
Number of Unsheltered Persons in Families	0	0	0	0	0	0	--
Number of Sheltered Individuals	268	279	234	223	219	-4	-2%
Number of Unsheltered Individuals	13	44	32	49	57	8	16%
Total Homeless Persons	360	385	320	319	317	-2	-1%
Number of Sheltered Families	26	21	19	16	15	-1	-6%
Number of Unsheltered Families	0	0	0	0	0	0	--
Number of Total Families	26	21	19	16	15	-1	-6%
Sheltered Chronically Homeless Individuals	45	34	29	51	17	-34	-67%
Unsheltered Chronically Homeless Individuals	6	18	11	14	14	0	0%
Total Chronically Homeless Individuals	51	52	40	65	31	-34	-52%
Sheltered Veterans	29	33	19	31	11	-20	-65%
Unsheltered Veterans	2	4	5	3	5	2	67%
Total Veterans	31	37	24	34	16	-18	-53%
Sheltered Unaccompanied Youth (up to 24)	--	41	25	24	19	-5	-21%
Unsheltered Unaccompanied Youth (up to 24)	--	10	0	4	1	-3	-75%
Total Unaccompanied Youth (up to 24)	--	51	25	28	20	-8	-29%

System Performance Measures Summary

	2014	2015	2016	2017	2018	2017-18 Change	% Change
Average Length of Time Homeless (days)	N/A	91	88	74	80	6	8.1%
Rate People Return to Homelessness in 6 Months	N/A	17.1%	16.8%	17.7%	12.2%	-5.5%	N/A
Number of People who are Homeless for the First Time	N/A	911	810	658	782	124	18.8%
Rate People Exit from ES, SH, TH, and RRH to PH	N/A	83.5%	66.8%	75.3%	60.2%	-15.1%	N/A
Rate People in PSH and OPH Retain or Exit to PH	N/A	96.3%	96.4%	95.5%	94.7%	-0.7%	N/A

Housing Inventory Count Summary

	2014	2015	2016	2017	2018	2017-18 Change	% Change
Emergency Shelter (ES)	302	288	289	281	255	-26	-9%
Transitional Housing (TH)	128	143	94	66	55	-11	-17%
Permanent Supportive Housing (PSH)	178	164	150	165	165	0	0%
Rapid Re-Housing (RRH)	2	1	27	26	19	-7	-27%

Award Summary

	2014	2015	2016	2017	2018	2017-18 Change	% Change
Continuum of Care (CoC)	\$1,353,018	\$1,223,874	\$1,223,910	\$1,177,440	\$1,336,441	\$159,001	14%
ESG (WV state recipient - no direct funding)	\$1,455,208	\$1,560,544	\$1,541,846	\$1,694,366	\$1,518,431	(\$175,935)	-10%