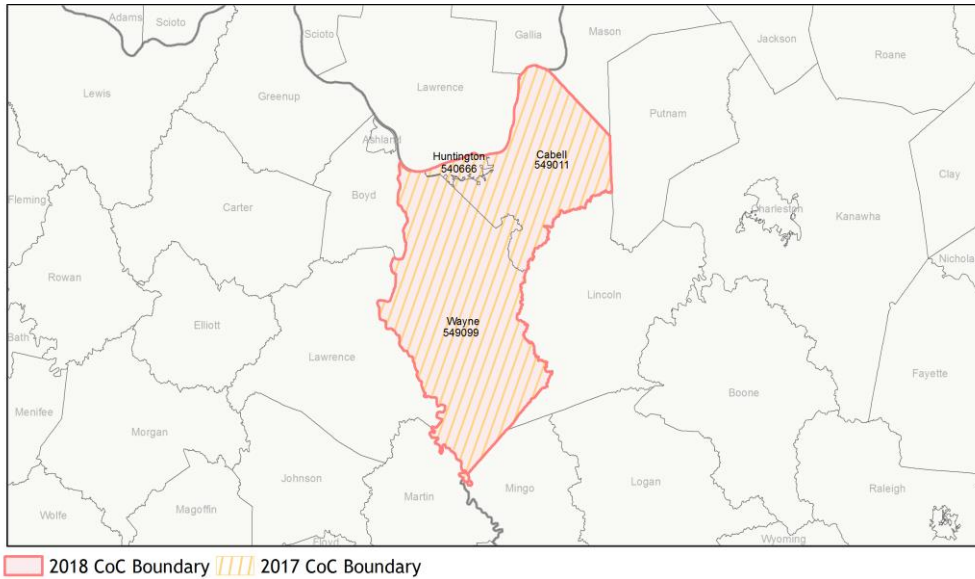
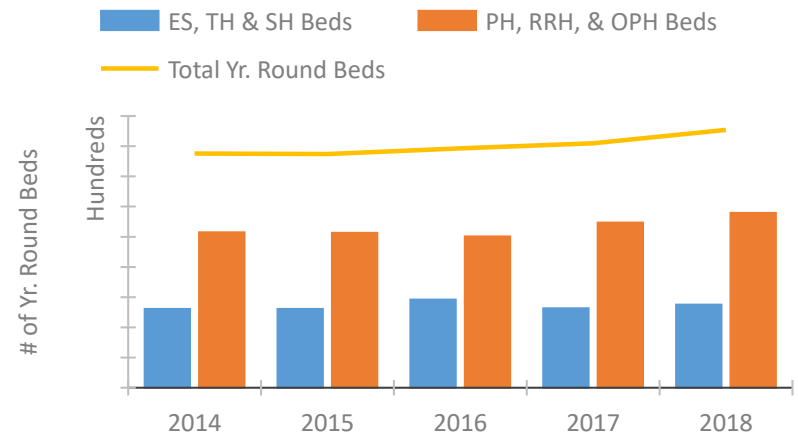


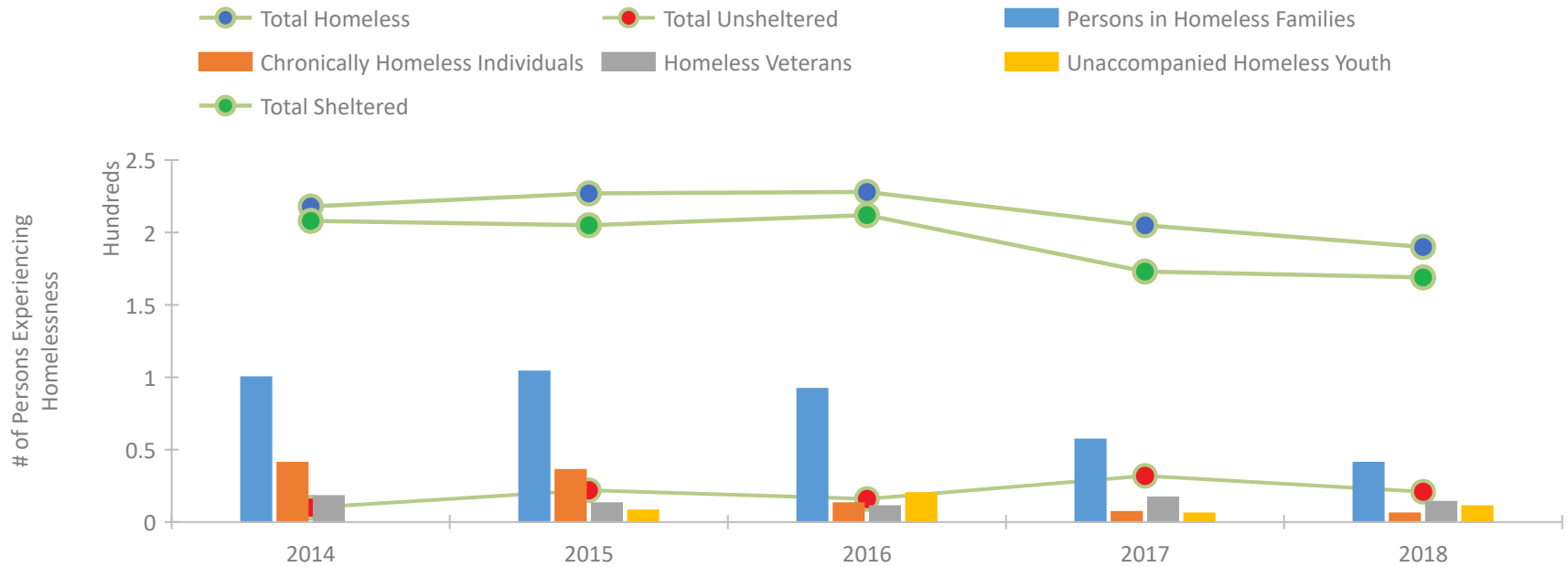
CoC Performance Profile WV-501 Huntington/Cabell, Wayne Counties CoC



Housing Inventory Count by Program Type

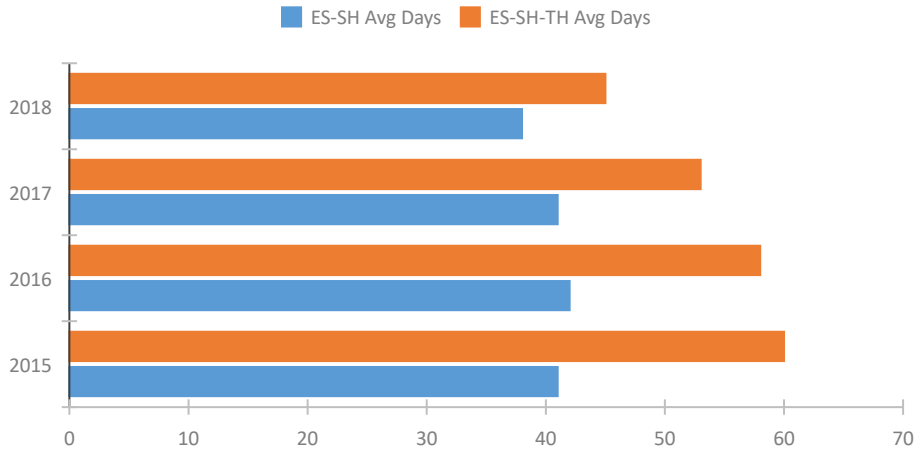


Homeless Population – Point-in-Time (PIT) Count

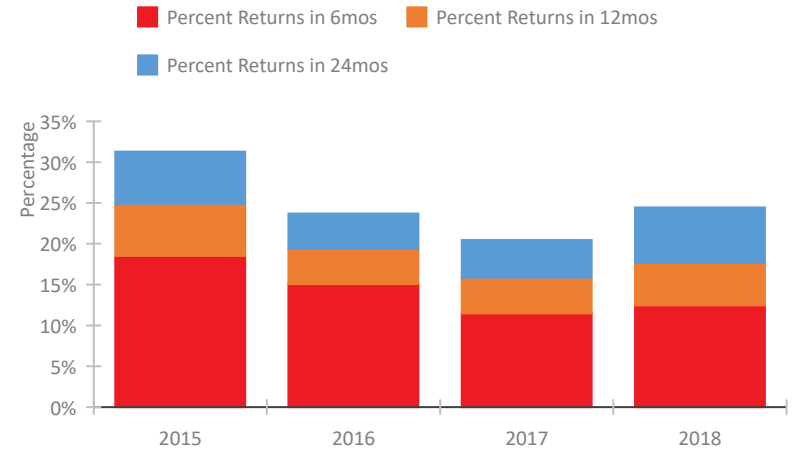


CoC Performance Profile WV-501 Huntington/Cabell, Wayne Counties CoC

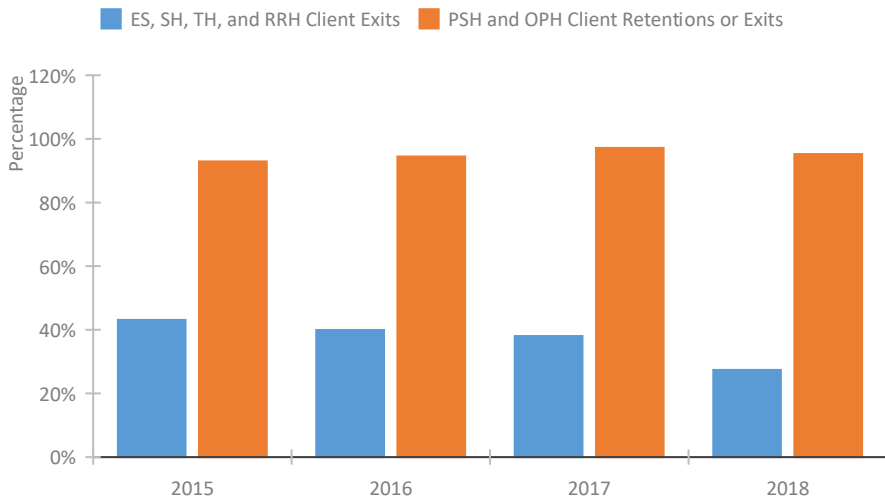
Length of Time Homeless



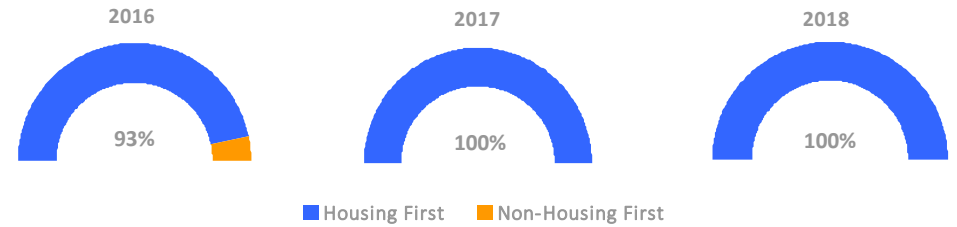
Returns to Homelessness Over Time



Exits to Permanent Housing by Program Type



Proportion of Housing First Projects by Year



Number of Projects by Year

	2016	2017	2018
Housing First Projects	14	18	18
Non-Housing First Projects	1	0	0

Data Summary: WV-501 Huntington/Cabell, Wayne Counties CoC

Point-In-Time Count Summary

	2014	2015	2016	2017	2018	2017-18 Change	% Change
Number of Sheltered Persons in Families	100	104	92	57	41	-16	-28%
Number of Unsheltered Persons in Families	0	0	0	0	0	0	--
Number of Sheltered Individuals	108	101	120	116	128	12	10%
Number of Unsheltered Individuals	10	22	16	32	21	-11	-34%
Total Homeless Persons	218	227	228	205	190	-15	-7%
Number of Sheltered Families	35	29	29	20	13	-7	-35%
Number of Unsheltered Families	0	0	0	0	0	0	--
Number of Total Families	35	29	29	20	13	-7	-35%
Sheltered Chronically Homeless Individuals	34	21	5	6	3	-3	-50%
Unsheltered Chronically Homeless Individuals	7	15	8	1	3	2	200%
Total Chronically Homeless Individuals	41	36	13	7	6	-1	-14%
Sheltered Veterans	15	4	8	16	12	-4	-25%
Unsheltered Veterans	3	9	3	1	2	1	100%
Total Veterans	18	13	11	17	14	-3	-18%
Sheltered Unaccompanied Youth (up to 24)	--	7	19	5	7	2	40%
Unsheltered Unaccompanied Youth (up to 24)	--	1	1	1	4	3	300%
Total Unaccompanied Youth (up to 24)	--	8	20	6	11	5	83%

System Performance Measures Summary

	2014	2015	2016	2017	2018	2017-18 Change	% Change
Average Length of Time Homeless (days)	N/A	60	58	53	45	-8	-15.1%
Rate People Return to Homelessness in 6 Months	N/A	18.5%	15.1%	11.5%	12.4%	1%	N/A
Number of People who are Homeless for the First Time	N/A	1036	1099	1032	894	-138	-13.4%
Rate People Exit from ES, SH, TH, and RRH to PH	N/A	43.1%	39.9%	38.0%	27.4%	-10.7%	N/A
Rate People in PSH and OPH Retain or Exit to PH	N/A	92.9%	94.5%	97.1%	95.2%	-1.9%	N/A

Housing Inventory Count Summary

	2014	2015	2016	2017	2018	2017-18 Change	% Change
Emergency Shelter (ES)	180	180	215	196	197	1	1%
Safe Haven (SH)	13	13	13	13	14	1	8%
Transitional Housing (TH)	68	68	64	54	64	10	19%
Permanent Supportive Housing (PSH)	403	397	364	384	398	14	4%
Rapid Re-Housing (RRH)	4	10	16	48	73	25	52%
Other Permanent Housing (OPH)	108	106	121	115	108	-7	-6%

Award Summary

	2014	2015	2016	2017	2018	2017-18 Change	% Change
Continuum of Care (CoC)	\$1,832,057	\$2,205,883	\$2,105,300	\$2,399,517	\$2,614,928	\$215,411	9%
Emergency Solutions Grants (ESG)	\$131,179	\$139,300	\$138,369	\$140,173	\$143,682	\$3,509	3%