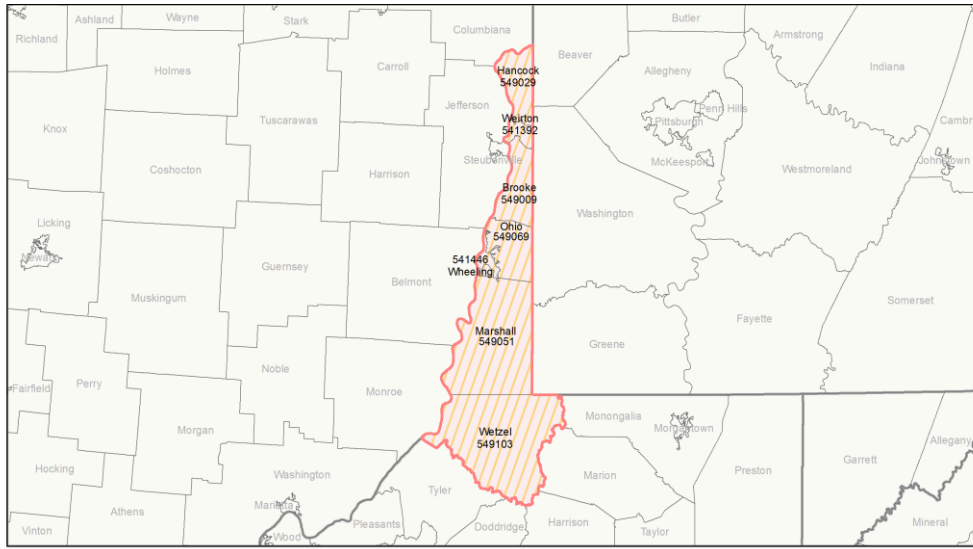
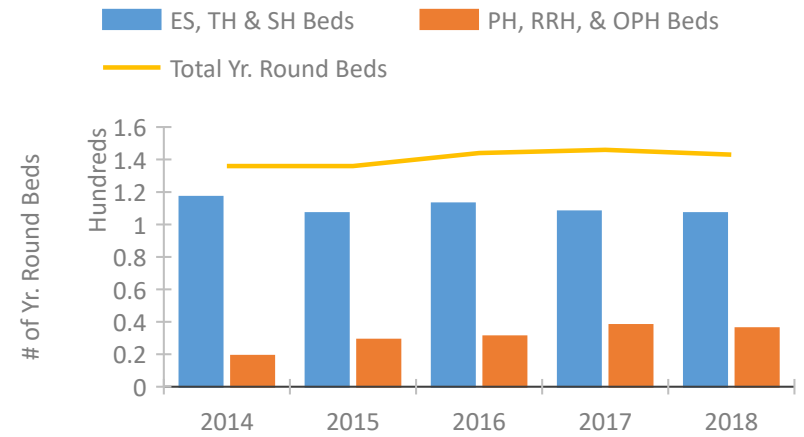


CoC Performance Profile WV-500 Wheeling, Weirton Area CoC

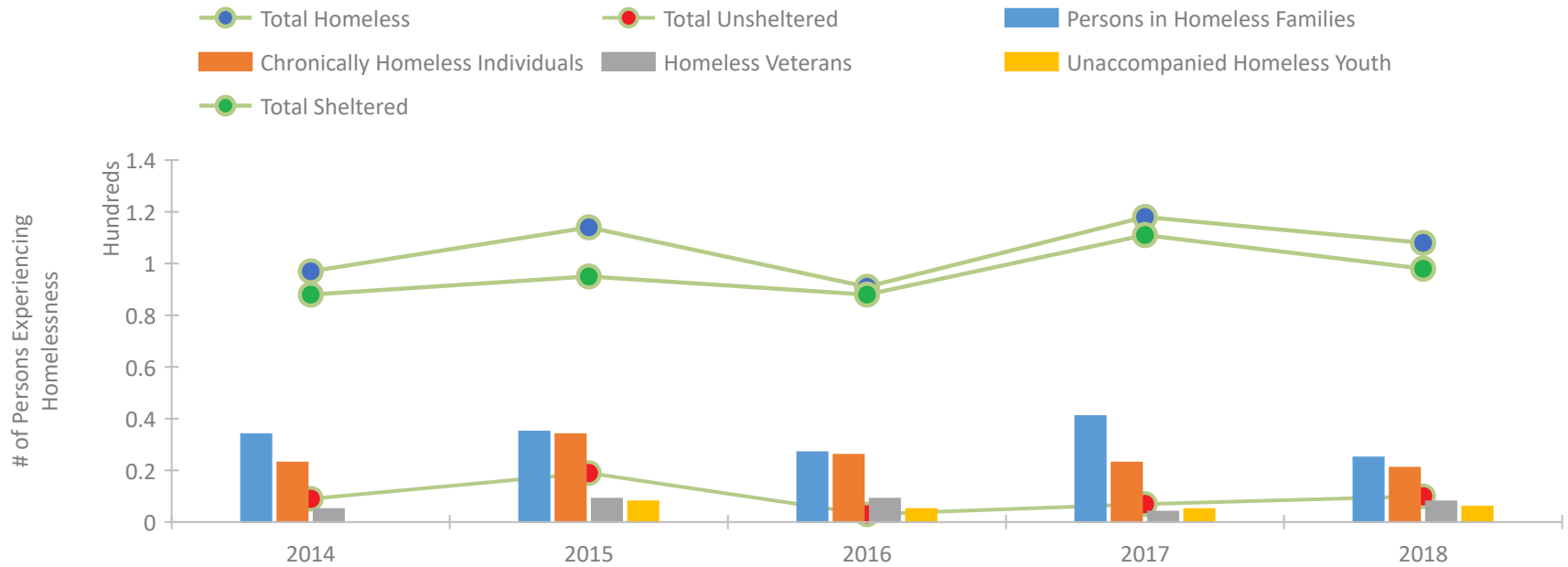


2018 CoC Boundary 2017 CoC Boundary

Housing Inventory Count by Program Type

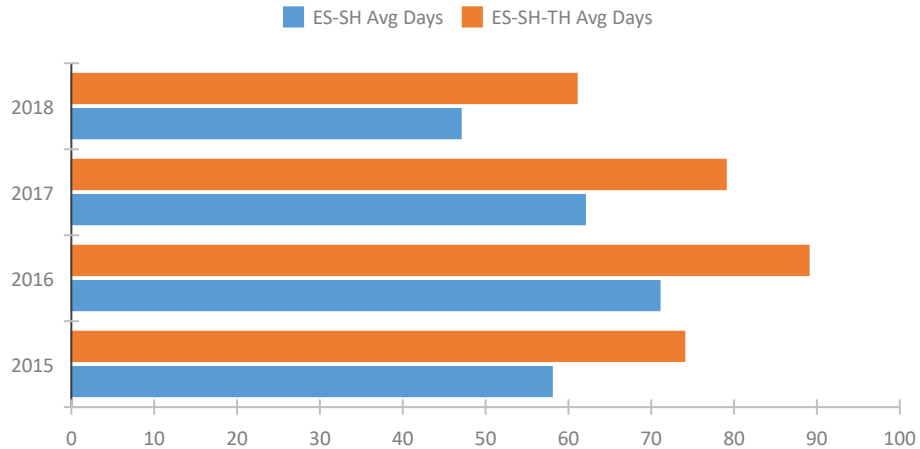


Homeless Population – Point-in-Time (PIT) Count

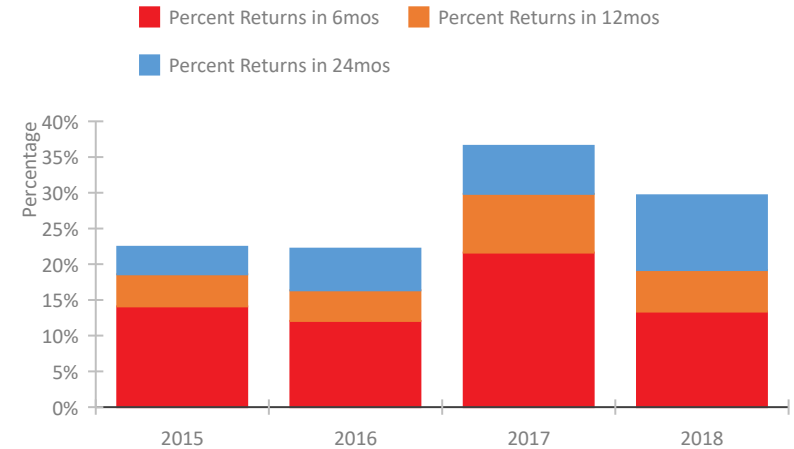


CoC Performance Profile WV-500 Wheeling, Weirton Area CoC

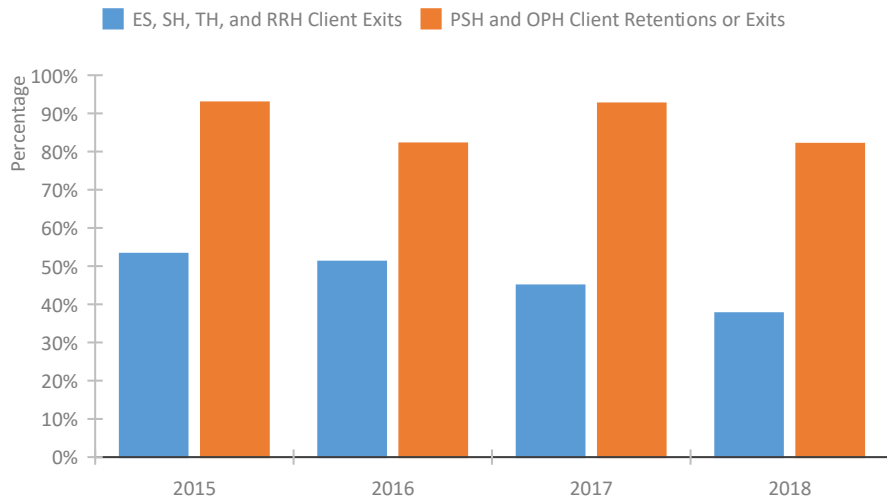
Length of Time Homeless



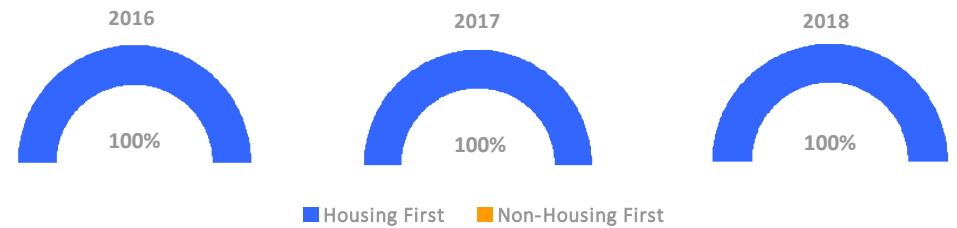
Returns to Homelessness Over Time



Exits to Permanent Housing by Program Type



Proportion of Housing First Projects by Year



Number of Projects by Year

	2016	2017	2018
Housing First Projects	3	3	3
Non-Housing First Projects	0	0	0

Data Summary: WV-500 Wheeling, Weirton Area CoC

Point-In-Time Count Summary

	2014	2015	2016	2017	2018	2017-18 Change	% Change
Number of Sheltered Persons in Families	29	35	27	41	25	-16	-39%
Number of Unsheltered Persons in Families	5	0	0	0	0	0	--
Number of Sheltered Individuals	59	60	61	70	73	3	4%
Number of Unsheltered Individuals	4	19	3	7	10	3	43%
Total Homeless Persons	97	114	91	118	108	-10	-8%
Number of Sheltered Families	9	11	10	14	9	-5	-36%
Number of Unsheltered Families	2	0	0	0	0	0	--
Number of Total Families	11	11	10	14	9	-5	-36%
Sheltered Chronically Homeless Individuals	20	19	25	20	13	-7	-35%
Unsheltered Chronically Homeless Individuals	3	15	1	3	8	5	167%
Total Chronically Homeless Individuals	23	34	26	23	21	-2	-9%
Sheltered Veterans	4	7	8	4	6	2	50%
Unsheltered Veterans	1	2	1	0	2	2	100%
Total Veterans	5	9	9	4	8	4	100%
Sheltered Unaccompanied Youth (up to 24)	--	6	5	4	6	2	50%
Unsheltered Unaccompanied Youth (up to 24)	--	2	0	1	0	-1	-100%
Total Unaccompanied Youth (up to 24)	--	8	5	5	6	1	20%

System Performance Measures Summary

	2014	2015	2016	2017	2018	2017-18 Change	% Change
Average Length of Time Homeless (days)	N/A	74	89	79	61	-18	-22.8%
Rate People Return to Homelessness in 6 Months	N/A	14.1%	12.1%	21.6%	13.4%	-8.3%	N/A
Number of People who are Homeless for the First Time	N/A	251	234	264	273	9	3.4%
Rate People Exit from ES, SH, TH, and RRH to PH	N/A	53.2%	51.2%	44.9%	37.7%	-7.3%	N/A
Rate People in PSH and OPH Retain or Exit to PH	N/A	92.9%	82.1%	92.6%	82.1%	-10.5%	N/A

Housing Inventory Count Summary

	2014	2015	2016	2017	2018	2017-18 Change	% Change
Emergency Shelter (ES)	77	66	63	68	67	-1	-1%
Transitional Housing (TH)	40	41	50	40	40	0	0%
Permanent Supportive Housing (PSH)	18	18	18	18	18	0	0%
Rapid Re-Housing (RRH)	1	11	13	20	18	-2	-10%

Award Summary

	2014	2015	2016	2017	2018	2017-18 Change	% Change
Continuum of Care (CoC)	\$437,524	\$412,132	\$413,181	\$423,047	\$424,200	\$1,153	0%
ESG (WV state recipient - no direct funding)	\$1,455,208	\$1,560,544	\$1,541,846	\$1,694,366	\$1,518,431	(\$175,935)	-10%