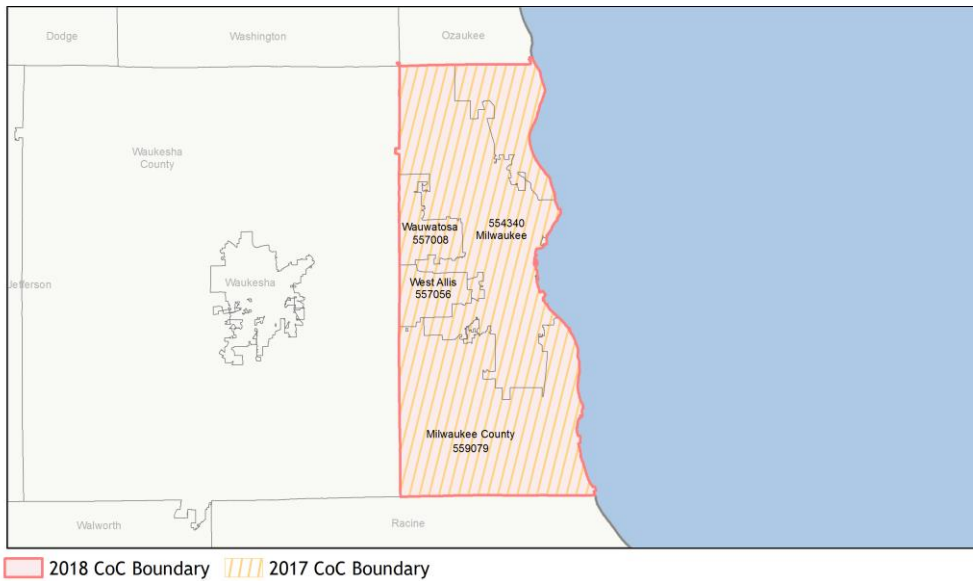
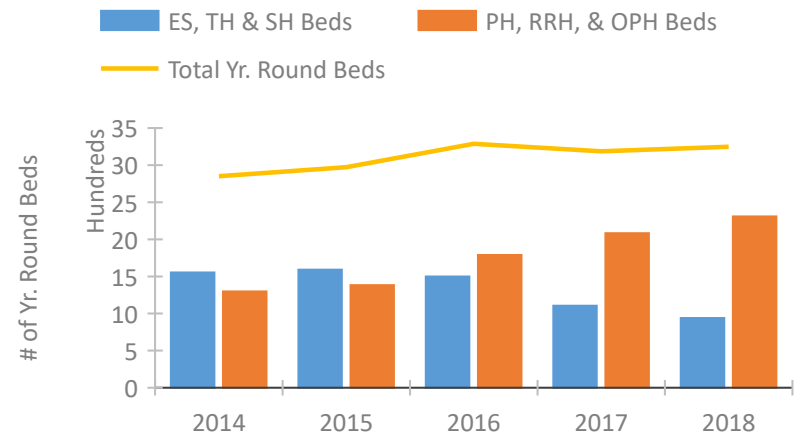


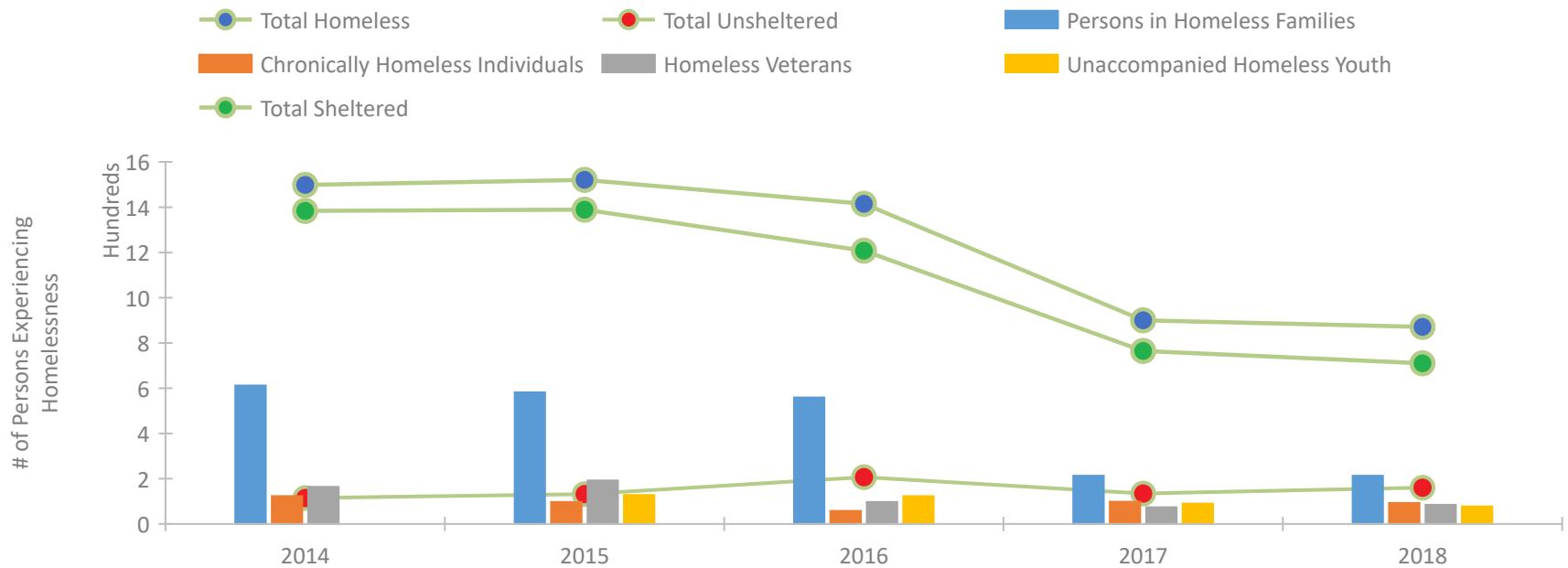
CoC Performance Profile WI-501 Milwaukee City & County CoC



Housing Inventory Count by Program Type

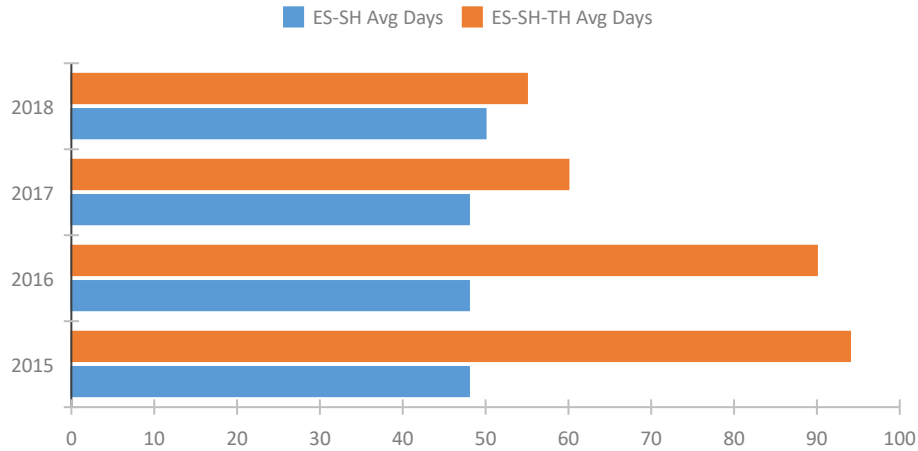


Homeless Population – Point-in-Time (PIT) Count

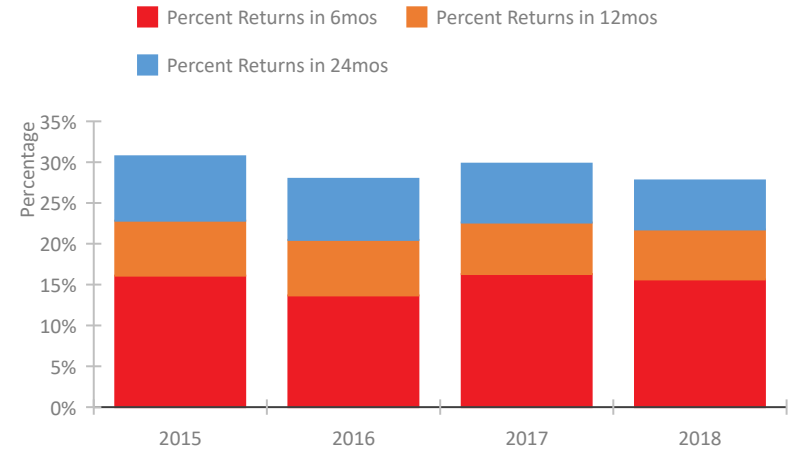


CoC Performance Profile WI-501 Milwaukee City & County CoC

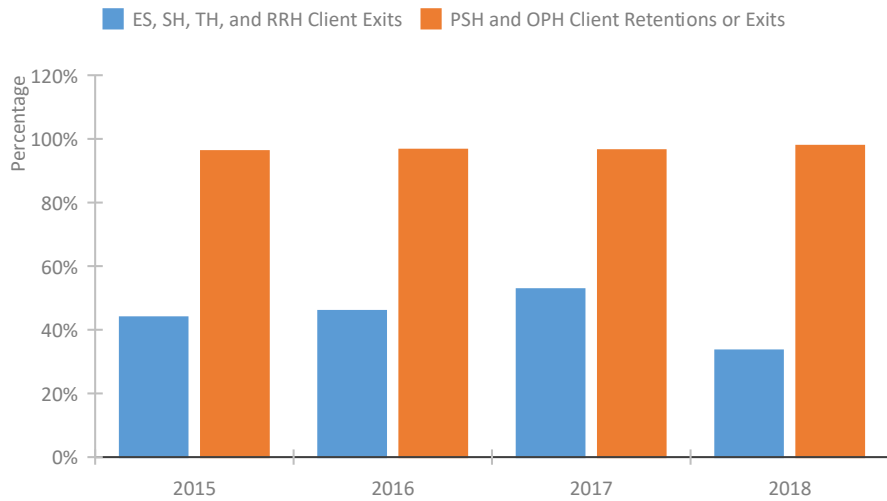
Length of Time Homeless



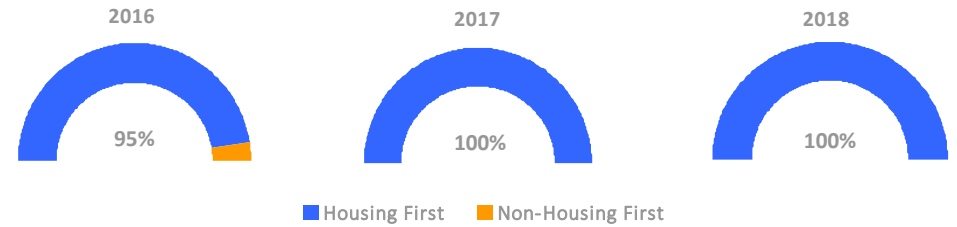
Returns to Homelessness Over Time



Exits to Permanent Housing by Program Type



Proportion of Housing First Projects by Year



Number of Projects by Year

	2016	2017	2018
Housing First Projects	19	19	22
Non-Housing First Projects	1	0	0

Data Summary: WI-501 Milwaukee City & County CoC

Point-In-Time Count Summary

	2014	2015	2016	2017	2018	2017-18 Change	% Change
Number of Sheltered Persons in Families	588	579	556	210	208	-2	-1%
Number of Unsheltered Persons in Families	24	3	3	3	5	2	67%
Number of Sheltered Individuals	796	810	652	555	502	-53	-10%
Number of Unsheltered Individuals	91	129	204	132	156	24	18%
Total Homeless Persons	1,499	1,521	1,415	900	871	-29	-3%
Number of Sheltered Families	175	182	169	67	65	-2	-3%
Number of Unsheltered Families	4	1	1	1	2	1	100%
Number of Total Families	179	183	170	68	67	-1	-1%
Sheltered Chronically Homeless Individuals	90	78	43	71	61	-10	-14%
Unsheltered Chronically Homeless Individuals	33	19	15	27	32	5	19%
Total Chronically Homeless Individuals	123	97	58	98	93	-5	-5%
Sheltered Veterans	154	179	87	65	79	14	22%
Unsheltered Veterans	10	13	10	9	6	-3	-33%
Total Veterans	164	192	97	74	85	11	15%
Sheltered Unaccompanied Youth (up to 24)	--	98	84	65	56	-9	-14%
Unsheltered Unaccompanied Youth (up to 24)	--	30	39	25	21	-4	-16%
Total Unaccompanied Youth (up to 24)	--	128	123	90	77	-13	-14%

System Performance Measures Summary

	2014	2015	2016	2017	2018	2017-18 Change	% Change
Average Length of Time Homeless (days)	N/A	94	90	60	55	-5	-8.3%
Rate People Return to Homelessness in 6 Months	N/A	16.1%	13.7%	16.3%	15.6%	-0.7%	N/A
Number of People who are Homeless for the First Time	N/A	4359	4277	3660	3774	114	3.1%
Rate People Exit from ES, SH, TH, and RRH to PH	N/A	43.9%	45.9%	52.7%	33.5%	-19.3%	N/A
Rate People in PSH and OPH Retain or Exit to PH	N/A	96.1%	96.6%	96.4%	97.8%	1.4%	N/A

Housing Inventory Count Summary

	2014	2015	2016	2017	2018	2017-18 Change	% Change
Emergency Shelter (ES)	725	790	752	763	772	9	1%
Safe Haven (SH)	43	43	43	70	47	-23	-33%
Transitional Housing (TH)	786	758	705	273	120	-153	-56%
Permanent Supportive Housing (PSH)	1,271	1,366	1,530	1,662	1,837	175	11%
Rapid Re-Housing (RRH)	26	16	169	420	426	6	1%
Other Permanent Housing (OPH)	--	--	90	--	46	--	--

Award Summary

	2014	2015	2016	2017	2018	2017-18 Change	% Change
Continuum of Care (CoC)	\$10,601,557	\$10,127,898	\$10,453,943	\$10,639,970	\$10,641,309	\$1,339	0%
Emergency Solutions Grants (ESG)	\$1,236,883	\$1,335,846	\$1,333,236	\$2,041,570	\$1,302,832	(\$738,738)	-36%