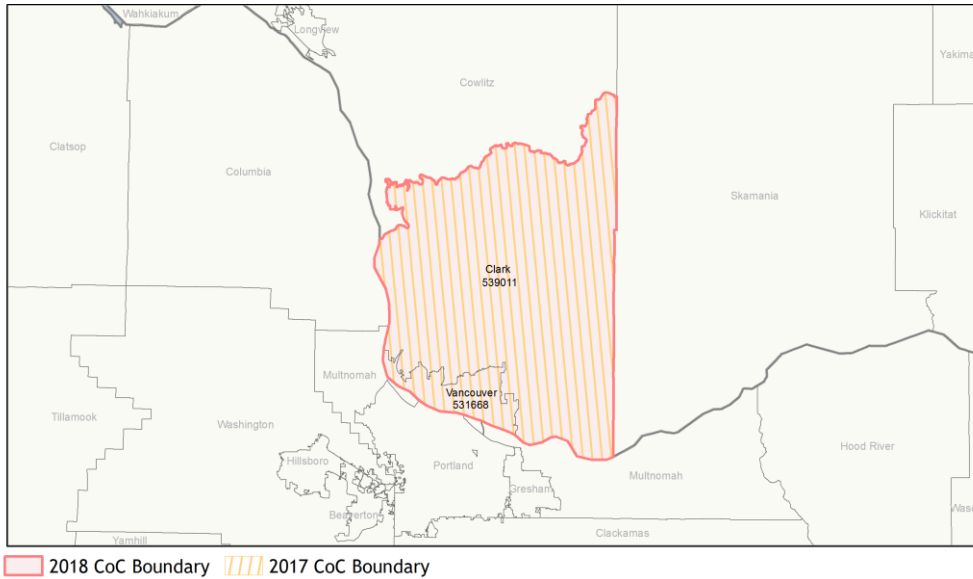
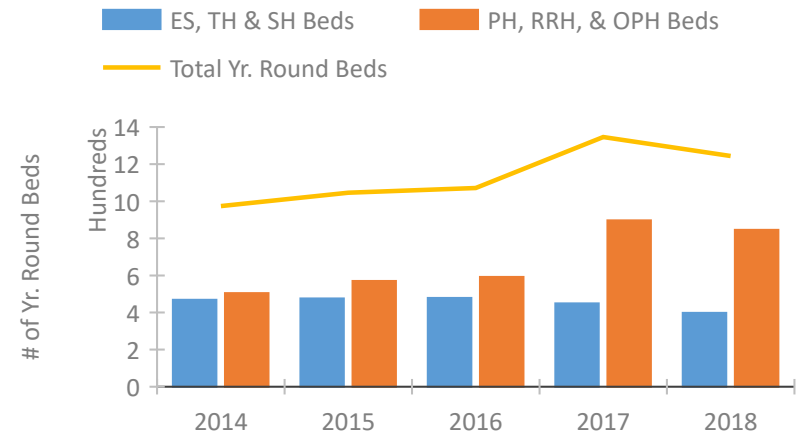


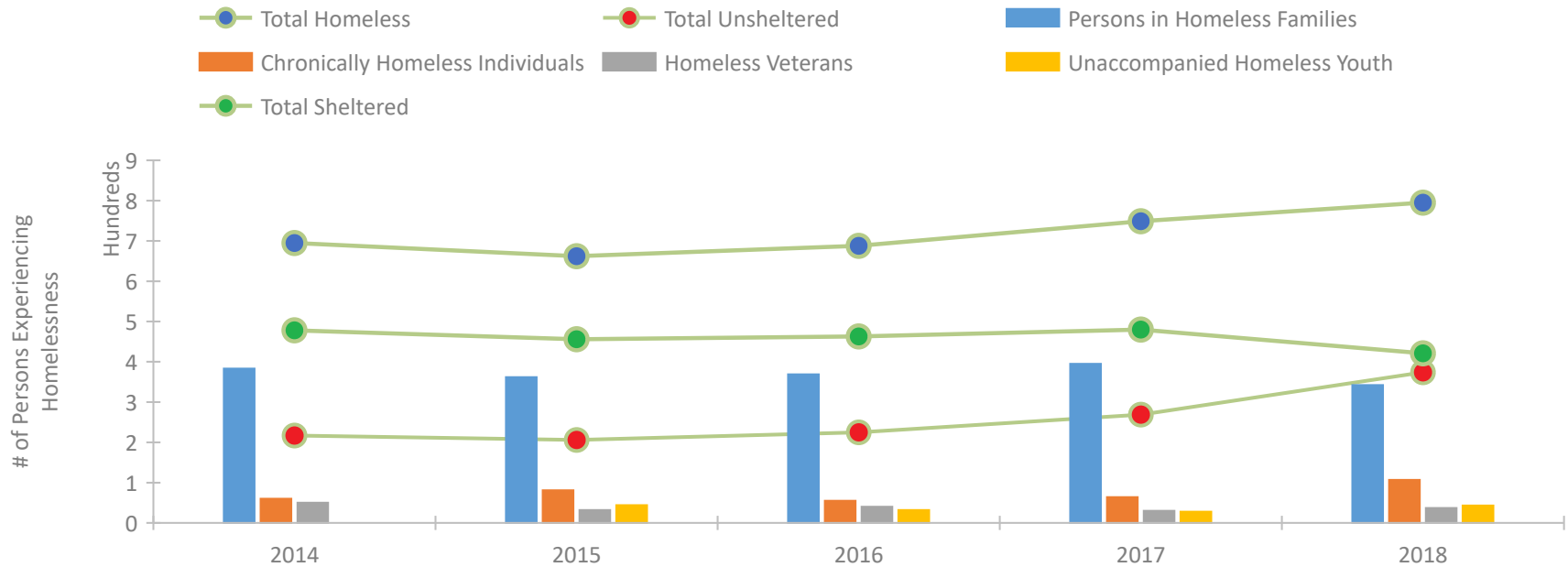
## CoC Performance Profile WA-508 Vancouver/Clark County CoC



### Housing Inventory Count by Program Type

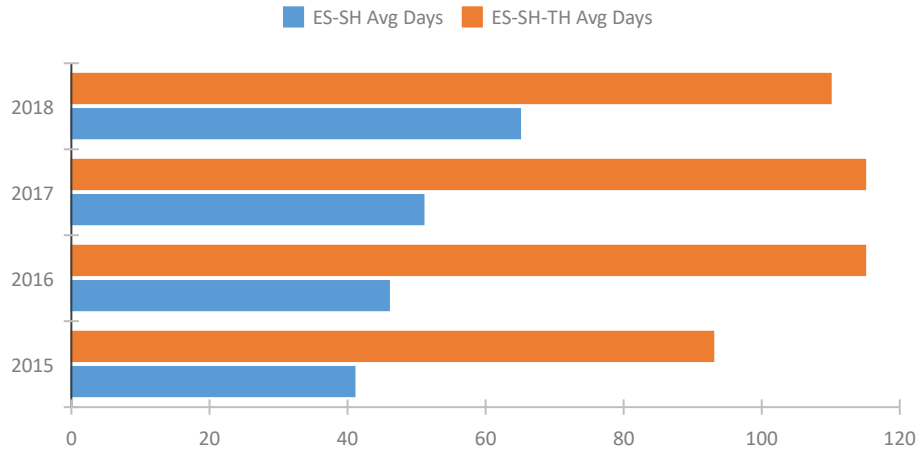


### Homeless Population – Point-in-Time (PIT) Count

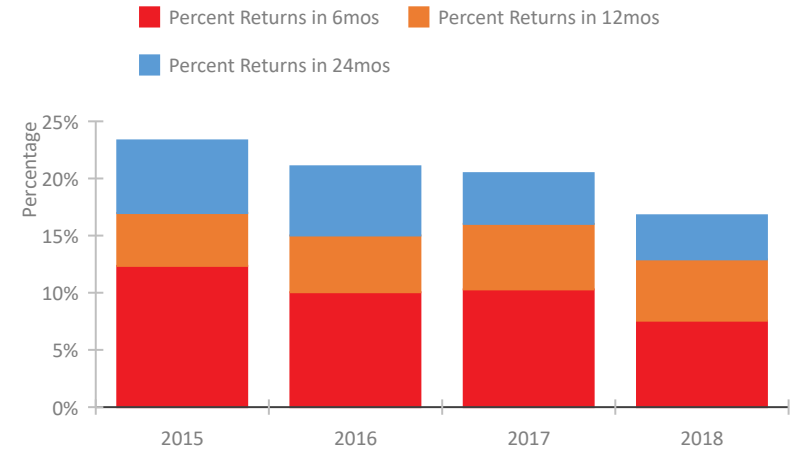


## CoC Performance Profile WA-508 Vancouver/Clark County CoC

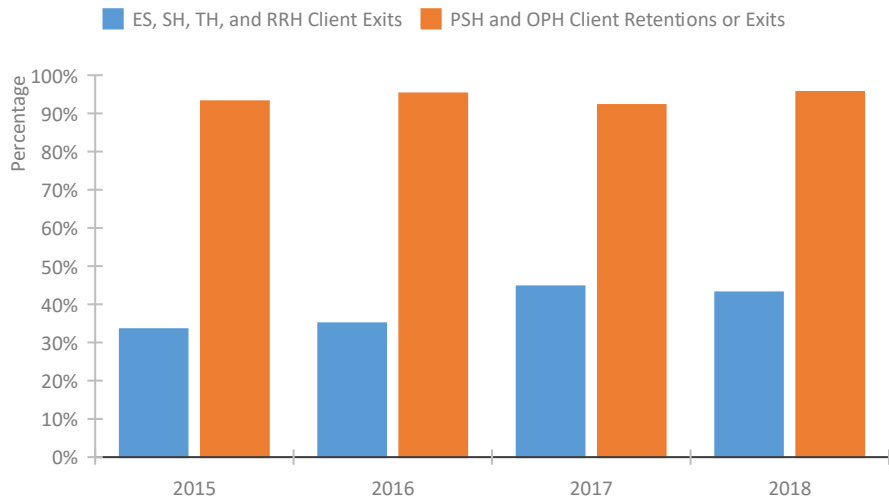
### Length of Time Homeless



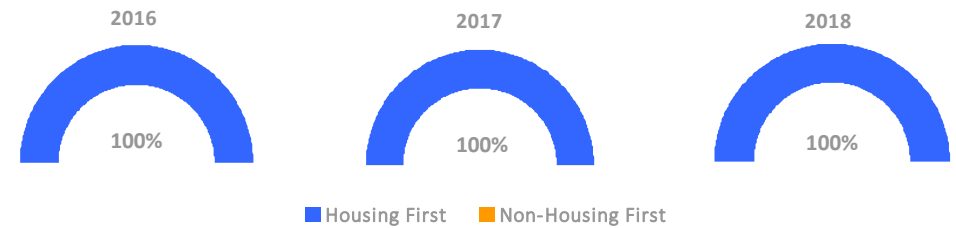
### Returns to Homelessness Over Time



### Exits to Permanent Housing by Program Type



### Proportion of Housing First Projects by Year



#### Number of Projects by Year

	2016	2017	2018
Housing First Projects	10	11	13
Non-Housing First Projects	0	0	0

## Data Summary: WA-508 Vancouver/Clark County CoC

### Point-In-Time Count Summary

	2014	2015	2016	2017	2018	2017-18 Change	% Change
Number of Sheltered Persons in Families	276	270	255	260	201	-59	-23%
Number of Unsheltered Persons in Families	107	92	114	135	141	6	4%
Number of Sheltered Individuals	202	186	208	220	220	0	0%
Number of Unsheltered Individuals	110	114	111	134	233	99	74%
<b>Total Homeless Persons</b>	<b>695</b>	<b>662</b>	<b>688</b>	<b>749</b>	<b>795</b>	<b>46</b>	<b>6%</b>
Number of Sheltered Families	81	86	71	78	60	-18	-23%
Number of Unsheltered Families	37	29	41	44	44	0	0%
<b>Number of Total Families</b>	<b>118</b>	<b>115</b>	<b>112</b>	<b>122</b>	<b>104</b>	<b>-18</b>	<b>-15%</b>
Sheltered Chronically Homeless Individuals	25	38	28	38	53	15	39%
Unsheltered Chronically Homeless Individuals	35	43	27	26	54	28	108%
<b>Total Chronically Homeless Individuals</b>	<b>60</b>	<b>81</b>	<b>55</b>	<b>64</b>	<b>107</b>	<b>43</b>	<b>67%</b>
Sheltered Veterans	36	24	28	23	16	-7	-30%
Unsheltered Veterans	14	8	12	7	21	14	200%
<b>Total Veterans</b>	<b>50</b>	<b>32</b>	<b>40</b>	<b>30</b>	<b>37</b>	<b>7</b>	<b>23%</b>
Sheltered Unaccompanied Youth (up to 24)	--	23	27	18	19	1	6%
Unsheltered Unaccompanied Youth (up to 24)	--	21	5	10	24	14	140%
<b>Total Unaccompanied Youth (up to 24)</b>	<b>--</b>	<b>44</b>	<b>32</b>	<b>28</b>	<b>43</b>	<b>15</b>	<b>54%</b>

### System Performance Measures Summary

	2014	2015	2016	2017	2018	2017-18 Change	% Change
Average Length of Time Homeless (days)	N/A	93	115	115	110	-5	-4.3%
Rate People Return to Homelessness in 6 Months	N/A	12.3%	10.0%	10.3%	7.6%	-2.7%	N/A
Number of People who are Homeless for the First Time	N/A	1442	1485	1586	1410	-176	-11.1%
Rate People Exit from ES, SH, TH, and RRH to PH	N/A	33.5%	35.0%	44.7%	43.1%	-1.6%	N/A
Rate People in PSH and OPH Retain or Exit to PH	N/A	93.1%	95.2%	92.2%	95.6%	3.4%	N/A

### Housing Inventory Count Summary

	2014	2015	2016	2017	2018	2017-18 Change	% Change
Emergency Shelter (ES)	161	162	163	175	180	5	3%
Transitional Housing (TH)	308	314	316	274	218	-56	-20%
Permanent Supportive Housing (PSH)	327	323	375	424	435	11	3%
Rapid Re-Housing (RRH)	178	247	217	473	411	-62	-13%

### Award Summary

	2014	2015	2016	2017	2018	2017-18 Change	% Change
<b>Continuum of Care (CoC)</b>	\$1,254,256	\$1,517,539	\$1,738,388	\$1,981,862	\$1,957,595	(\$24,267)	-1%
<b>ESG (WA state recipient - no direct funding)</b>	\$2,262,253	\$2,460,585	\$2,500,872	\$2,554,041	\$2,579,924	\$25,883	1%