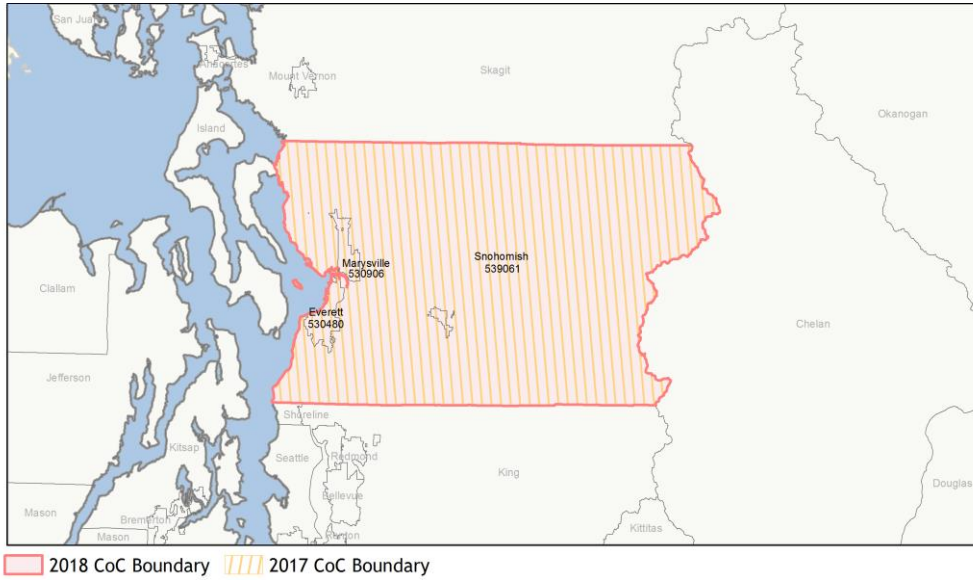
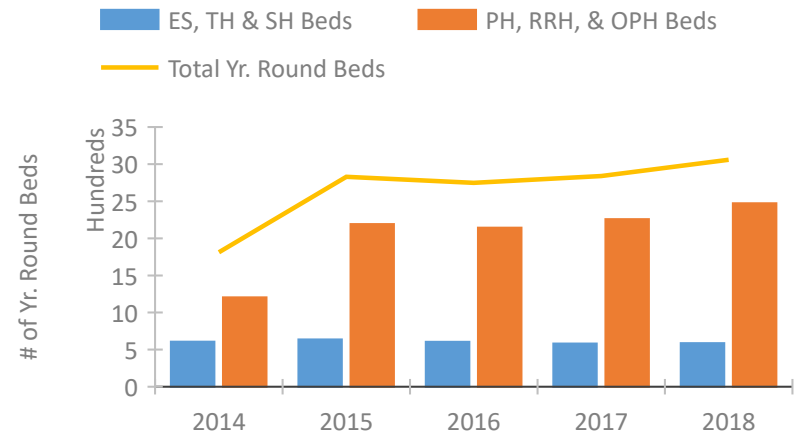


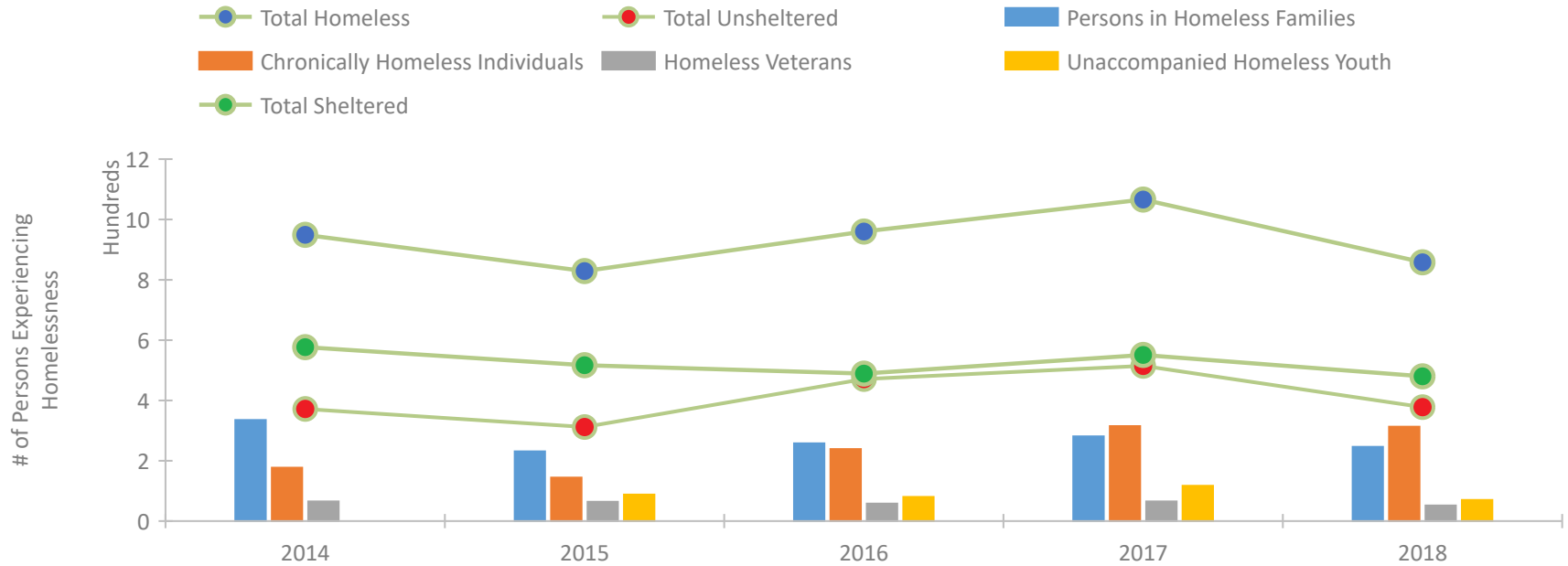
CoC Performance Profile WA-504 Everett/Snohomish County CoC



Housing Inventory Count by Program Type

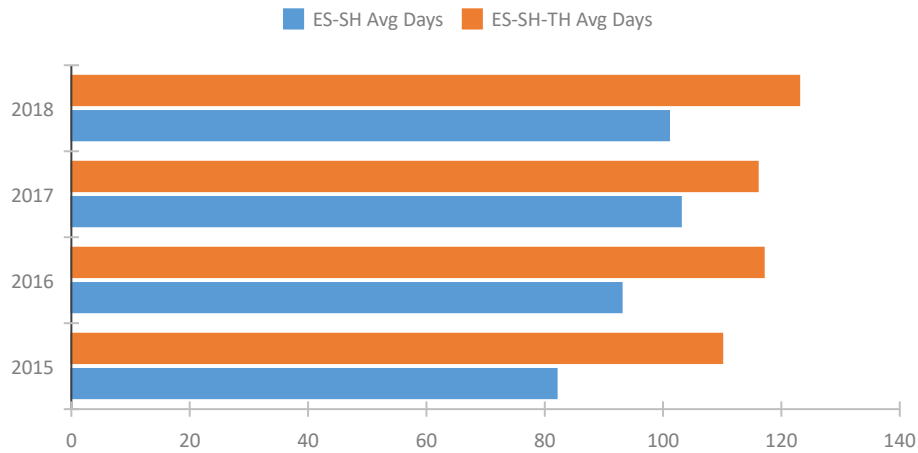


Homeless Population – Point-in-Time (PIT) Count

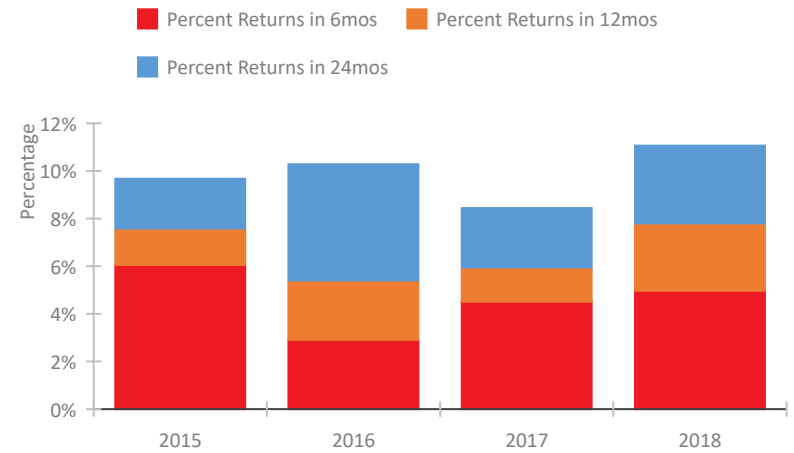


CoC Performance Profile WA-504 Everett/Snohomish County CoC

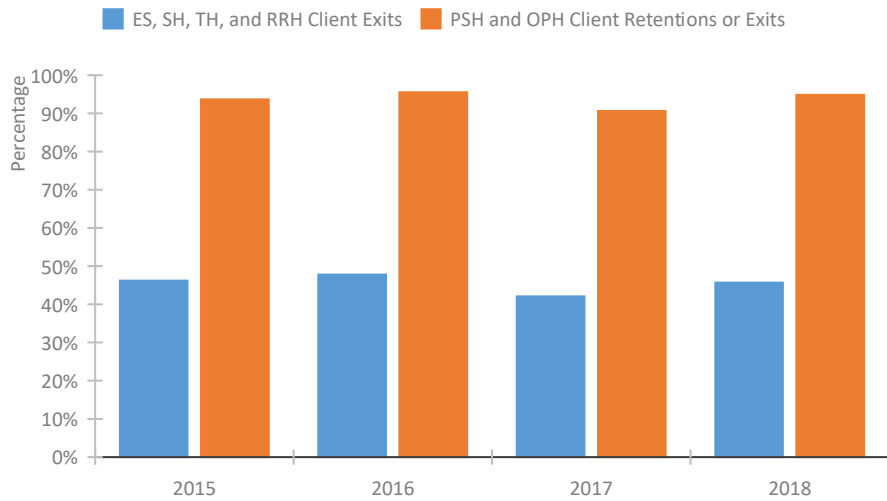
Length of Time Homeless



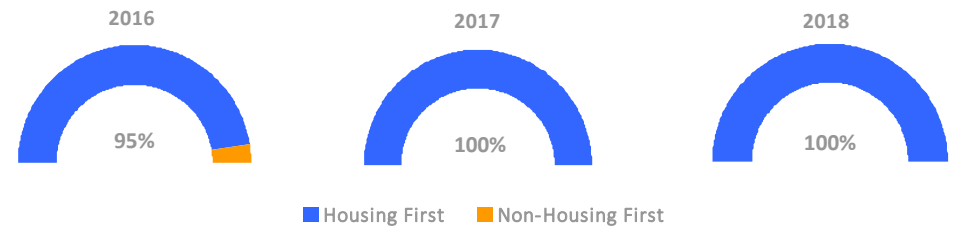
Returns to Homelessness Over Time



Exits to Permanent Housing by Program Type



Proportion of Housing First Projects by Year



Number of Projects by Year

	2016	2017	2018
Housing First Projects	18	20	20
Non-Housing First Projects	1	0	0

Data Summary: WA-504 Everett/Snohomish County CoC

Point-In-Time Count Summary

	2014	2015	2016	2017	2018	2017-18 Change	% Change
Number of Sheltered Persons in Families	292	215	223	237	213	-24	-10%
Number of Unsheltered Persons in Families	43	16	35	44	33	-11	-25%
Number of Sheltered Individuals	285	302	266	314	267	-47	-15%
Number of Unsheltered Individuals	329	296	436	471	345	-126	-27%
Total Homeless Persons	949	829	960	1,066	858	-208	-20%
Number of Sheltered Families	90	75	78	76	66	-10	-13%
Number of Unsheltered Families	15	5	10	14	8	-6	-43%
Number of Total Families	105	80	88	90	74	-16	-18%
Sheltered Chronically Homeless Individuals	56	15	28	36	73	37	103%
Unsheltered Chronically Homeless Individuals	121	129	211	279	240	-39	-14%
Total Chronically Homeless Individuals	177	144	239	315	313	-2	-1%
Sheltered Veterans	30	32	22	22	20	-2	-9%
Unsheltered Veterans	35	32	36	43	32	-11	-26%
Total Veterans	65	64	58	65	52	-13	-20%
Sheltered Unaccompanied Youth (up to 24)	--	53	37	51	39	-12	-24%
Unsheltered Unaccompanied Youth (up to 24)	--	35	43	66	31	-35	-53%
Total Unaccompanied Youth (up to 24)	--	88	80	117	70	-47	-40%

System Performance Measures Summary

	2014	2015	2016	2017	2018	2017-18 Change	% Change
Average Length of Time Homeless (days)	N/A	110	117	116	123	7	6%
Rate People Return to Homelessness in 6 Months	N/A	6.1%	2.9%	4.5%	5.0%	0.5%	N/A
Number of People who are Homeless for the First Time	N/A	2395	2037	2069	2308	239	11.6%
Rate People Exit from ES, SH, TH, and RRH to PH	N/A	46.2%	47.8%	42.1%	45.7%	3.6%	N/A
Rate People in PSH and OPH Retain or Exit to PH	N/A	93.7%	95.5%	90.6%	94.9%	4.2%	N/A

Housing Inventory Count Summary

	2014	2015	2016	2017	2018	2017-18 Change	% Change
Emergency Shelter (ES)	384	472	460	476	475	-1	0%
Transitional Housing (TH)	223	165	145	105	111	6	6%
Permanent Supportive Housing (PSH)	1,037	1,034	1,344	1,456	1,569	113	8%
Rapid Re-Housing (RRH)	168	185	306	237	398	161	68%
Other Permanent Housing (OPH)	--	974	493	566	506	-60	-11%

Award Summary

	2014	2015	2016	2017	2018	2017-18 Change	% Change
Continuum of Care (CoC)	\$5,631,040	\$7,900,826	\$7,982,600	\$8,205,677	\$9,868,888	\$1,663,211	20%
Emergency Solutions Grants (ESG)	\$195,654	\$219,736	\$237,184	\$245,665	\$246,964	\$1,299	1%
Youth Homelessness Demonstration Program (YHDP)	N/A	N/A	--	\$2,387,593	--	--	--