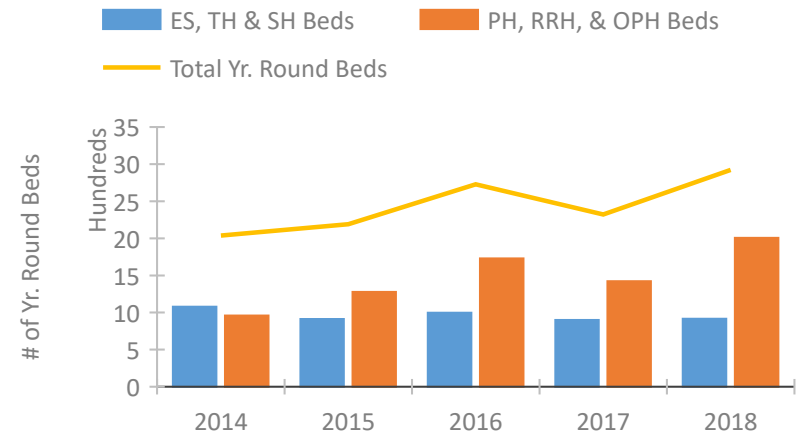


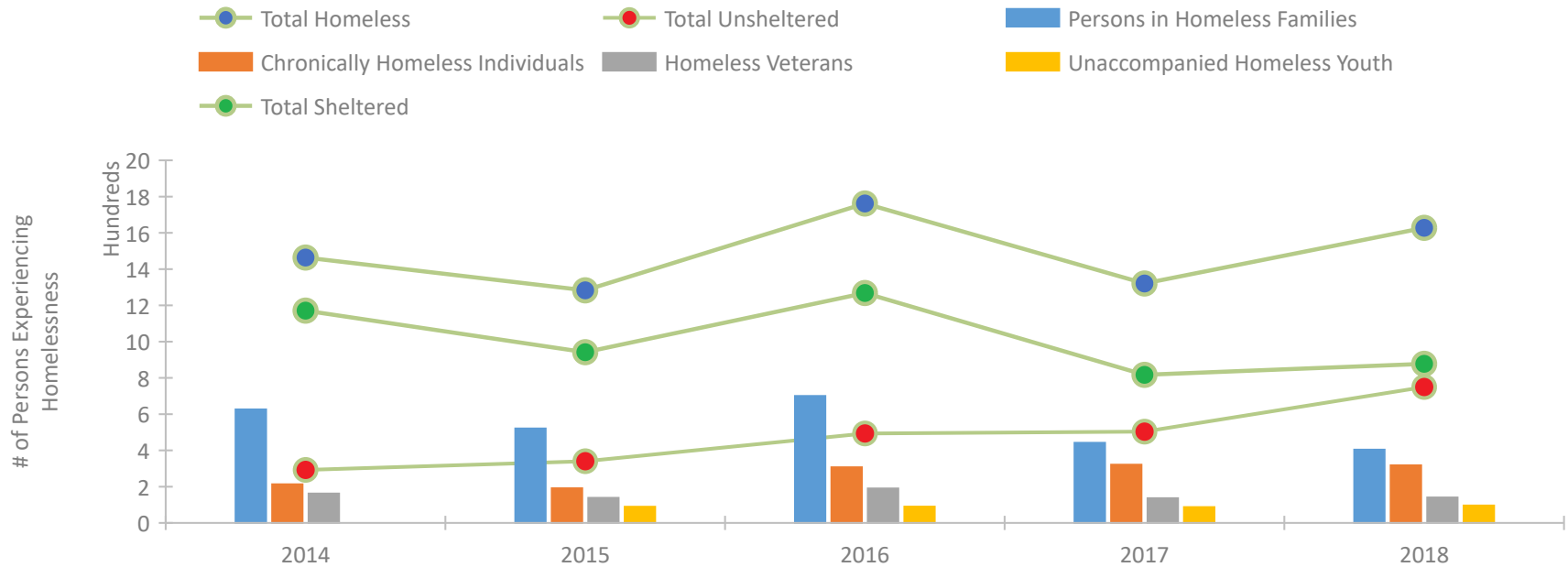
CoC Performance Profile WA-503 Tacoma, Lakewood/Pierce County CoC



Housing Inventory Count by Program Type

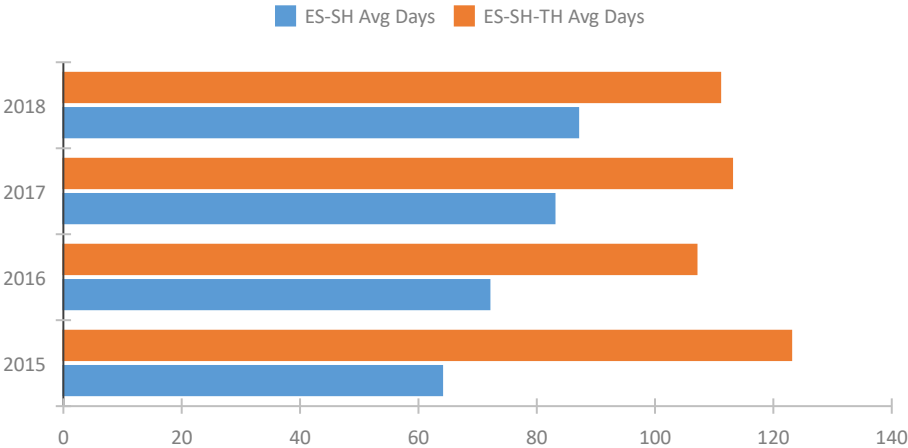


Homeless Population – Point-in-Time (PIT) Count

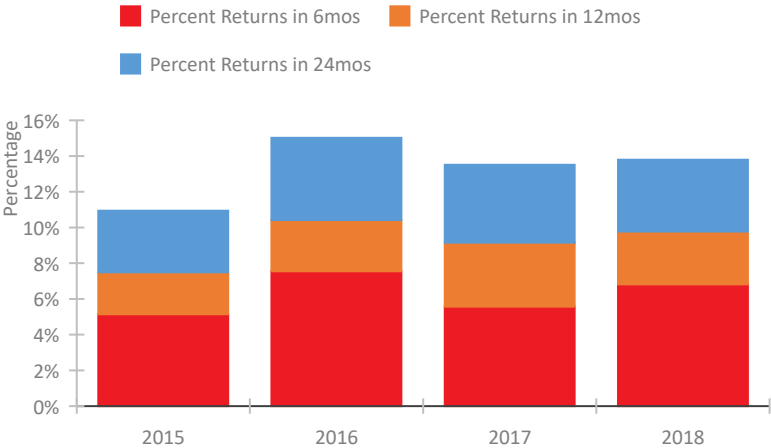


CoC Performance Profile WA-503 Tacoma, Lakewood/Pierce County CoC

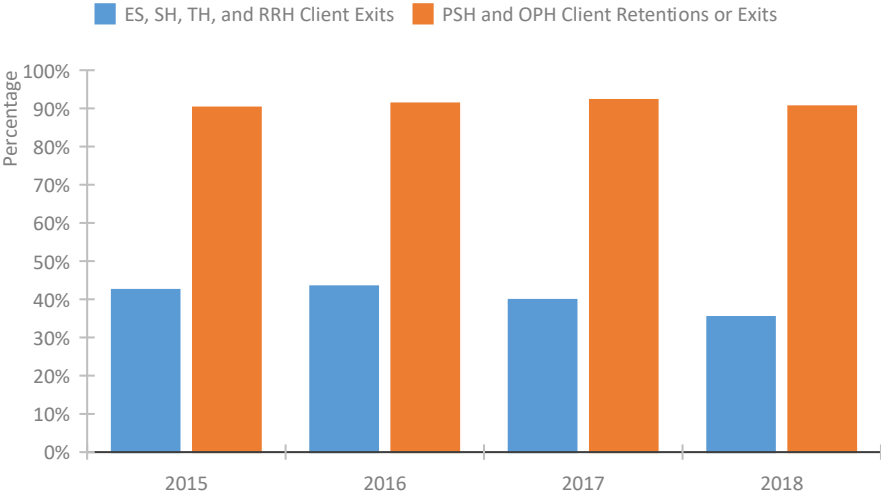
Length of Time Homeless



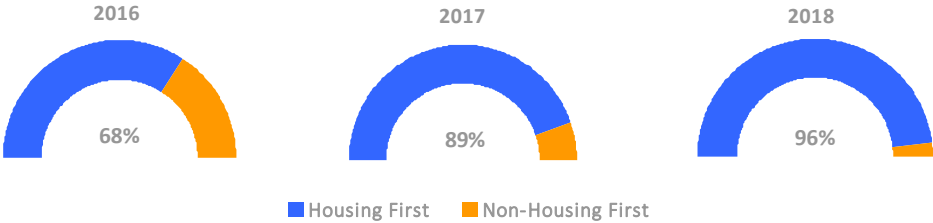
Returns to Homelessness Over Time



Exits to Permanent Housing by Program Type



Proportion of Housing First Projects by Year



Number of Projects by Year			
	2016	2017	2018
Housing First Projects	13	17	23
Non-Housing First Projects	6	2	1

Data Summary: WA-503 Tacoma, Lakewood/Pierce County CoC

Point-In-Time Count Summary

	2014	2015	2016	2017	2018	2017-18 Change	% Change
Number of Sheltered Persons in Families	610	482	631	419	384	-35	-8%
Number of Unsheltered Persons in Families	16	39	69	23	20	-3	-13%
Number of Sheltered Individuals	561	460	637	398	494	96	24%
Number of Unsheltered Individuals	277	302	425	481	730	249	52%
Total Homeless Persons	1,464	1,283	1,762	1,321	1,628	307	23%
Number of Sheltered Families	188	142	204	125	120	-5	-4%
Number of Unsheltered Families	8	12	27	7	8	1	14%
Number of Total Families	196	154	231	132	128	-4	-3%
Sheltered Chronically Homeless Individuals	90	61	127	66	146	80	121%
Unsheltered Chronically Homeless Individuals	123	130	180	255	172	-83	-33%
Total Chronically Homeless Individuals	213	191	307	321	318	-3	-1%
Sheltered Veterans	129	60	100	51	60	9	18%
Unsheltered Veterans	33	78	90	85	80	-5	-6%
Total Veterans	162	138	190	136	140	4	3%
Sheltered Unaccompanied Youth (up to 24)	--	68	65	44	47	3	7%
Unsheltered Unaccompanied Youth (up to 24)	--	21	25	43	49	6	14%
Total Unaccompanied Youth (up to 24)	--	89	90	87	96	9	10%

System Performance Measures Summary

	2014	2015	2016	2017	2018	2017-18 Change	% Change
Average Length of Time Homeless (days)	N/A	123	107	113	111	-2	-1.8%
Rate People Return to Homelessness in 6 Months	N/A	5.1%	7.5%	5.6%	6.8%	1.2%	N/A
Number of People who are Homeless for the First Time	N/A	4018	4202	3704	3283	-421	-11.4%
Rate People Exit from ES, SH, TH, and RRH to PH	N/A	42.4%	43.4%	39.8%	35.4%	-4.5%	N/A
Rate People in PSH and OPH Retain or Exit to PH	N/A	90.2%	91.3%	92.2%	90.5%	-1.7%	N/A

Housing Inventory Count Summary

	2014	2015	2016	2017	2018	2017-18 Change	% Change
Emergency Shelter (ES)	513	518	569	604	756	152	25%
Transitional Housing (TH)	566	395	429	296	161	-135	-46%
Permanent Supportive Housing (PSH)	654	745	813	785	897	112	14%
Rapid Re-Housing (RRH)	305	468	897	591	513	-78	-13%
Other Permanent Housing (OPH)	--	65	20	45	596	551	1224%

Award Summary

	2014	2015	2016	2017	2018	2017-18 Change	% Change
Continuum of Care (CoC)	\$3,174,762	\$3,449,147	\$3,303,548	\$3,327,896	\$3,449,417	\$121,521	4%
Emergency Solutions Grants (ESG)	\$400,380	\$426,204	\$426,480	\$438,301	\$439,103	\$802	0%