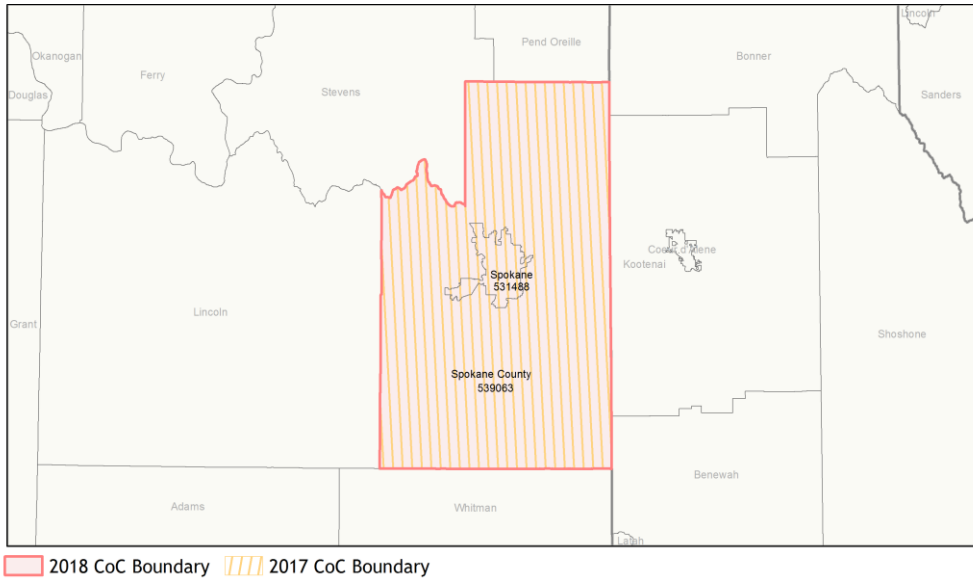
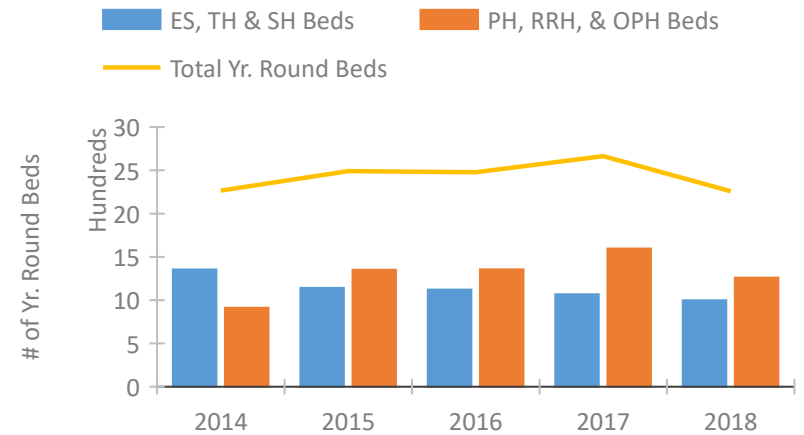


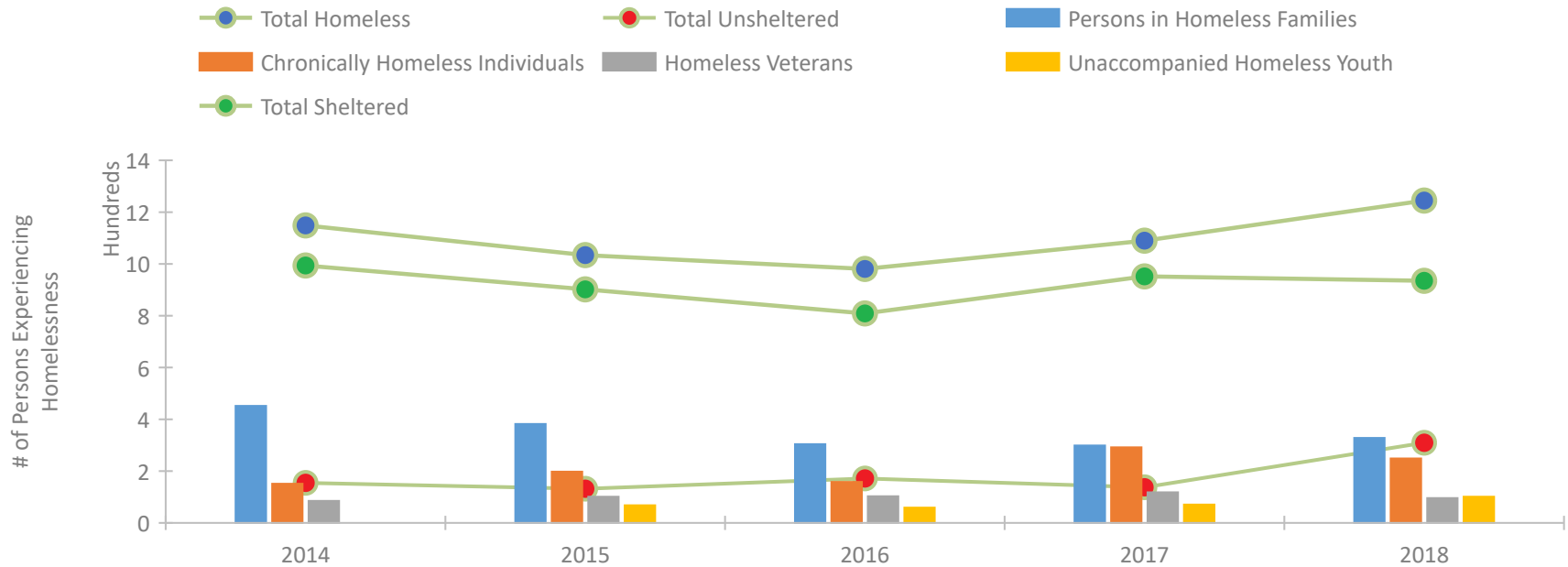
CoC Performance Profile WA-502 Spokane City & County CoC



Housing Inventory Count by Program Type

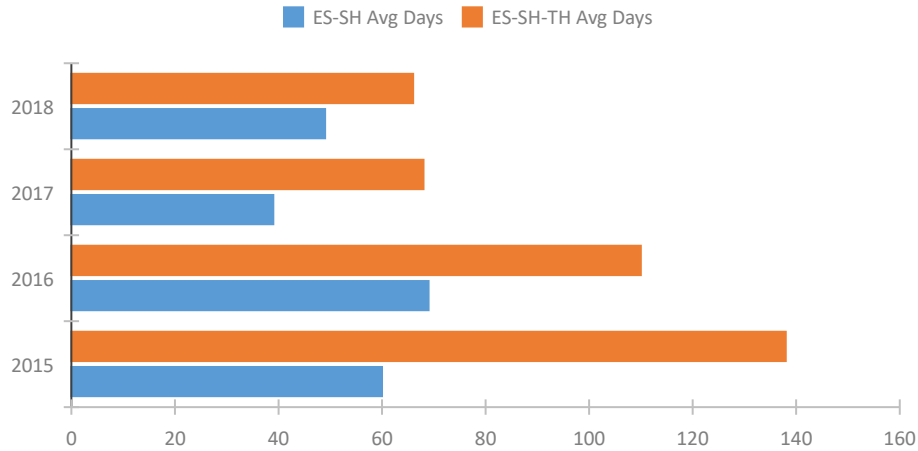


Homeless Population – Point-in-Time (PIT) Count

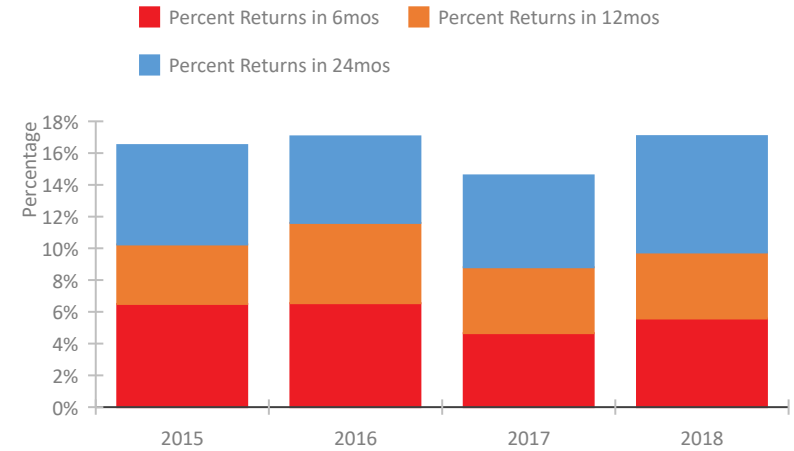


CoC Performance Profile WA-502 Spokane City & County CoC

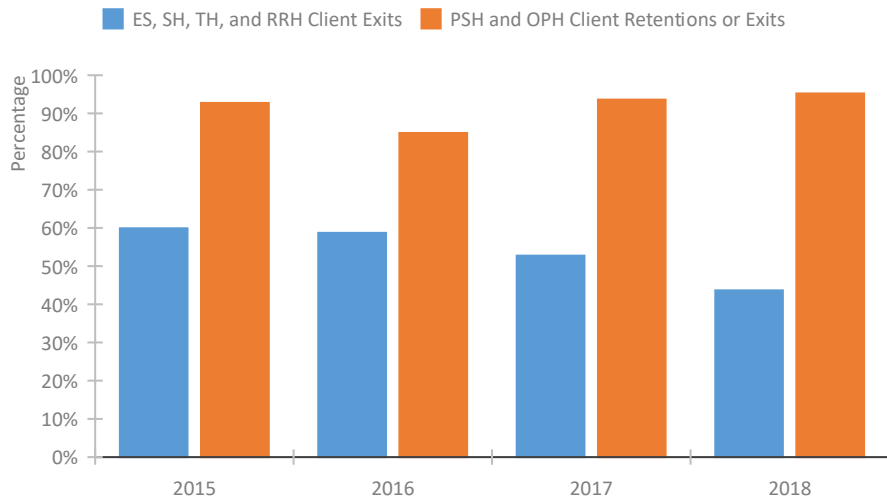
Length of Time Homeless



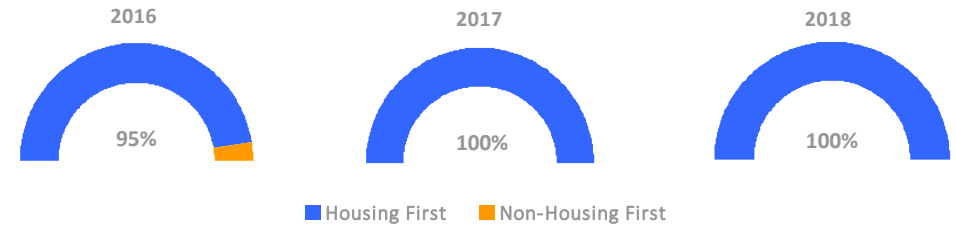
Returns to Homelessness Over Time



Exits to Permanent Housing by Program Type



Proportion of Housing First Projects by Year



Number of Projects by Year

	2016	2017	2018
Housing First Projects	19	21	23
Non-Housing First Projects	1	0	0

Data Summary: WA-502 Spokane City & County CoC

Point-In-Time Count Summary

	2014	2015	2016	2017	2018	2017-18 Change	% Change
Number of Sheltered Persons in Families	434	366	296	293	313	20	7%
Number of Unsheltered Persons in Families	18	16	8	6	15	9	150%
Number of Sheltered Individuals	560	536	513	659	622	-37	-6%
Number of Unsheltered Individuals	137	116	164	132	295	163	123%
Total Homeless Persons	1,149	1,034	981	1,090	1,245	155	14%
Number of Sheltered Families	140	115	100	101	115	14	14%
Number of Unsheltered Families	6	6	3	2	4	2	100%
Number of Total Families	146	121	103	103	119	16	16%
Sheltered Chronically Homeless Individuals	85	135	67	208	143	-65	-31%
Unsheltered Chronically Homeless Individuals	66	63	91	84	106	22	26%
Total Chronically Homeless Individuals	151	198	158	292	249	-43	-15%
Sheltered Veterans	82	91	90	109	67	-42	-39%
Unsheltered Veterans	3	10	13	9	29	20	222%
Total Veterans	85	101	103	118	96	-22	-19%
Sheltered Unaccompanied Youth (up to 24)	--	55	42	53	68	15	28%
Unsheltered Unaccompanied Youth (up to 24)	--	13	17	18	33	15	83%
Total Unaccompanied Youth (up to 24)	--	68	59	71	101	30	42%

System Performance Measures Summary

	2014	2015	2016	2017	2018	2017-18 Change	% Change
Average Length of Time Homeless (days)	N/A	138	110	68	66	-2	-2.9%
Rate People Return to Homelessness in 6 Months	N/A	6.5%	6.5%	4.7%	5.6%	0.9%	N/A
Number of People who are Homeless for the First Time	N/A	3396	3828	4332	5039	707	16.3%
Rate People Exit from ES, SH, TH, and RRH to PH	N/A	59.9%	58.7%	52.7%	43.7%	-9.1%	N/A
Rate People in PSH and OPH Retain or Exit to PH	N/A	92.7%	84.9%	93.6%	95.2%	1.6%	N/A

Housing Inventory Count Summary

	2014	2015	2016	2017	2018	2017-18 Change	% Change
Emergency Shelter (ES)	705	693	711	709	720	11	2%
Transitional Housing (TH)	650	448	411	359	278	-81	-23%
Permanent Supportive Housing (PSH)	610	797	864	835	808	-27	-3%
Rapid Re-Housing (RRH)	225	406	388	636	358	-278	-44%
Other Permanent Housing (OPH)	77	148	104	125	95	-30	-24%

Award Summary

	2014	2015	2016	2017	2018	2017-18 Change	% Change
Continuum of Care (CoC)	\$3,530,580	\$3,822,547	\$3,776,210	\$3,785,801	\$3,778,347	(\$7,454)	0%
Emergency Solutions Grants (ESG)	\$249,377	\$268,994	\$269,876	\$268,989	\$271,343	\$2,354	1%