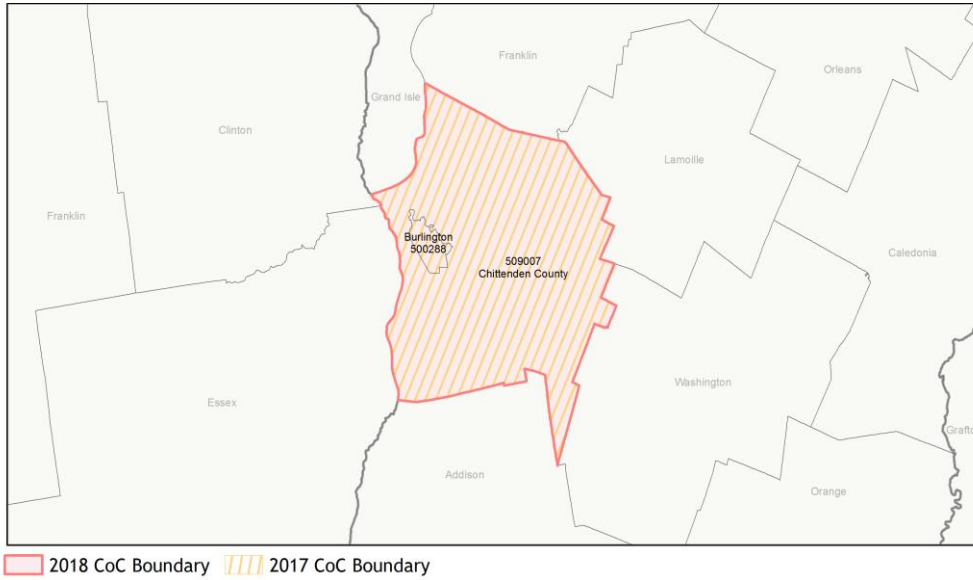
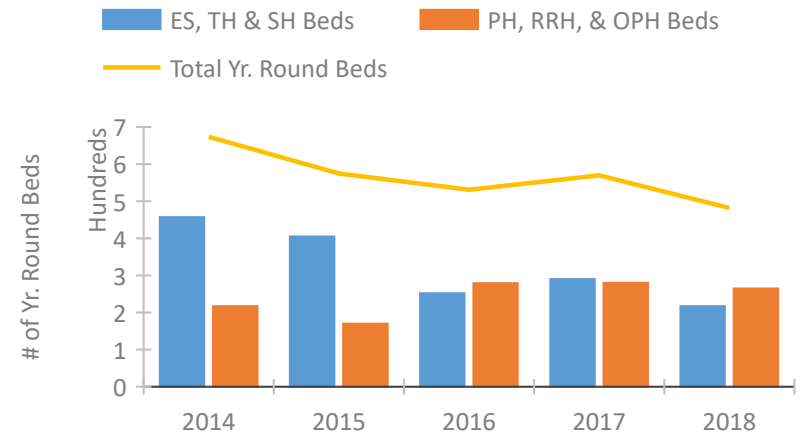


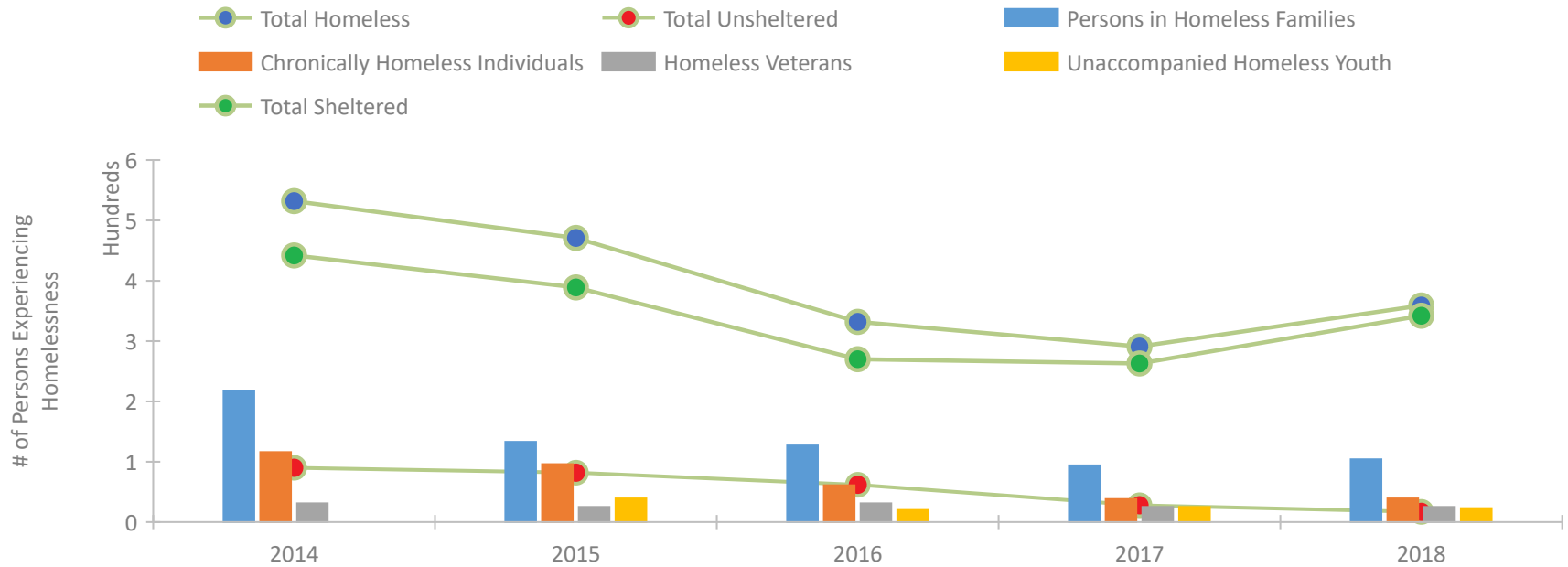
# CoC Performance Profile VT-501 Burlington/Chittenden County CoC



## Housing Inventory Count by Program Type

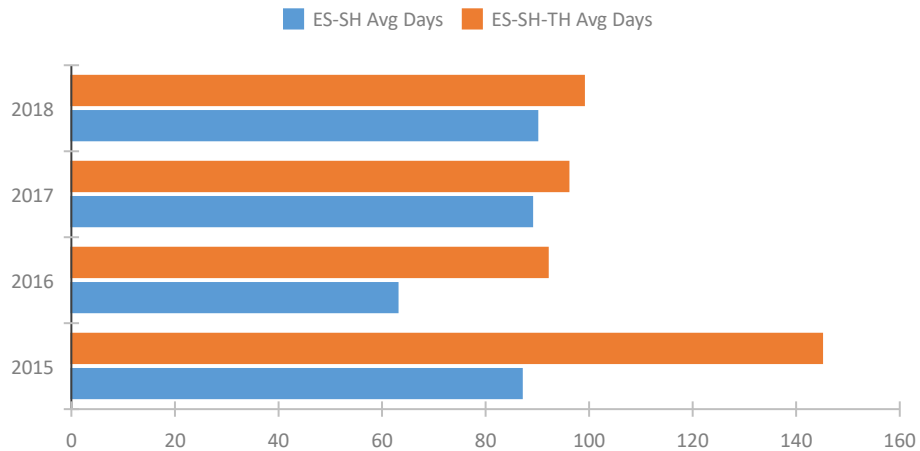


## Homeless Population – Point-in-Time (PIT) Count

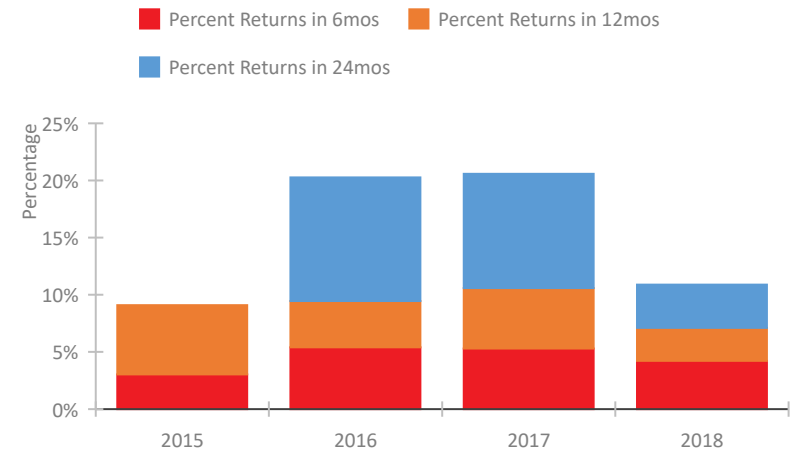


## CoC Performance Profile VT-501 Burlington/Chittenden County CoC

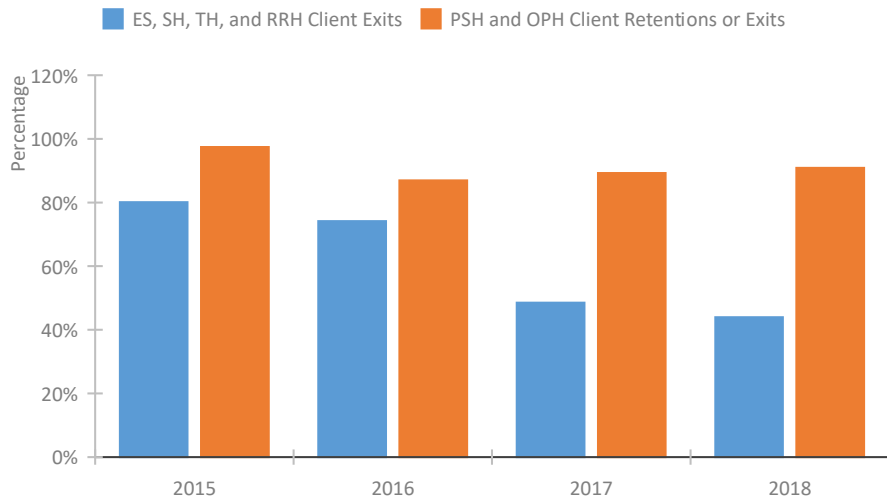
### Length of Time Homeless



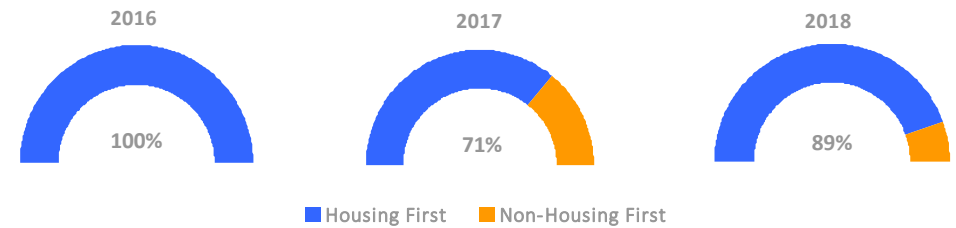
### Returns to Homelessness Over Time



### Exits to Permanent Housing by Program Type



### Proportion of Housing First Projects by Year



### Number of Projects by Year

	2016	2017	2018
Housing First Projects	8	5	8
Non-Housing First Projects	0	2	1

## Data Summary: VT-501 Burlington/Chittenden County CoC

### Point-In-Time Count Summary

	2014	2015	2016	2017	2018	2017-18 Change	% Change
Number of Sheltered Persons in Families	184	118	127	89	104	15	17%
Number of Unsheltered Persons in Families	34	15	0	5	0	-5	-100%
Number of Sheltered Individuals	258	271	143	174	238	64	37%
Number of Unsheltered Individuals	56	67	62	23	17	-6	-26%
<b>Total Homeless Persons</b>	<b>532</b>	<b>471</b>	<b>332</b>	<b>291</b>	<b>359</b>	<b>68</b>	<b>23%</b>
Number of Sheltered Families	60	39	43	36	33	-3	-8%
Number of Unsheltered Families	13	4	0	1	0	-1	-100%
<b>Number of Total Families</b>	<b>73</b>	<b>43</b>	<b>43</b>	<b>37</b>	<b>33</b>	<b>-4</b>	<b>-11%</b>
Sheltered Chronically Homeless Individuals	89	53	30	26	31	5	19%
Unsheltered Chronically Homeless Individuals	27	43	31	12	8	-4	-33%
<b>Total Chronically Homeless Individuals</b>	<b>116</b>	<b>96</b>	<b>61</b>	<b>38</b>	<b>39</b>	<b>1</b>	<b>3%</b>
Sheltered Veterans	27	24	24	23	24	1	4%
Unsheltered Veterans	4	1	7	2	1	-1	-50%
<b>Total Veterans</b>	<b>31</b>	<b>25</b>	<b>31</b>	<b>25</b>	<b>25</b>	<b>0</b>	<b>0%</b>
Sheltered Unaccompanied Youth (up to 24)	--	33	17	24	23	-1	-4%
Unsheltered Unaccompanied Youth (up to 24)	--	6	3	1	0	-1	-100%
<b>Total Unaccompanied Youth (up to 24)</b>	<b>--</b>	<b>39</b>	<b>20</b>	<b>25</b>	<b>23</b>	<b>-2</b>	<b>-8%</b>

### System Performance Measures Summary

	2014	2015	2016	2017	2018	2017-18 Change	% Change
Average Length of Time Homeless (days)	N/A	145	92	96	99	3	3.1%
Rate People Return to Homelessness in 6 Months	N/A	3.0%	5.4%	5.3%	4.2%	-1.1%	N/A
Number of People who are Homeless for the First Time	N/A	255	192	609	774	165	27.1%
Rate People Exit from ES, SH, TH, and RRH to PH	N/A	80.1%	74.1%	48.5%	43.9%	-4.6%	N/A
Rate People in PSH and OPH Retain or Exit to PH	N/A	97.4%	87.0%	89.3%	90.9%	1.7%	N/A

### Housing Inventory Count Summary

	2014	2015	2016	2017	2018	2017-18 Change	% Change
Emergency Shelter (ES)	351	335	171	220	143	-77	-35%
Transitional Housing (TH)	106	70	81	70	74	4	6%
Permanent Supportive Housing (PSH)	207	154	141	165	147	-18	-11%
Rapid Re-Housing (RRH)	10	16	124	115	96	-19	-17%
Other Permanent Housing (OPH)	--	--	14	--	22	--	--

### Award Summary

	2014	2015	2016	2017	2018	2017-18 Change	% Change
<b>Continuum of Care (CoC)</b>	\$999,771	\$1,036,720	\$1,143,175	\$1,173,447	\$1,124,342	(\$49,105)	-4%
<b>ESG (VT state recipient - no direct funding)</b>	\$589,905	\$640,508	\$636,450	\$635,751	\$628,663	(\$7,088)	-1%