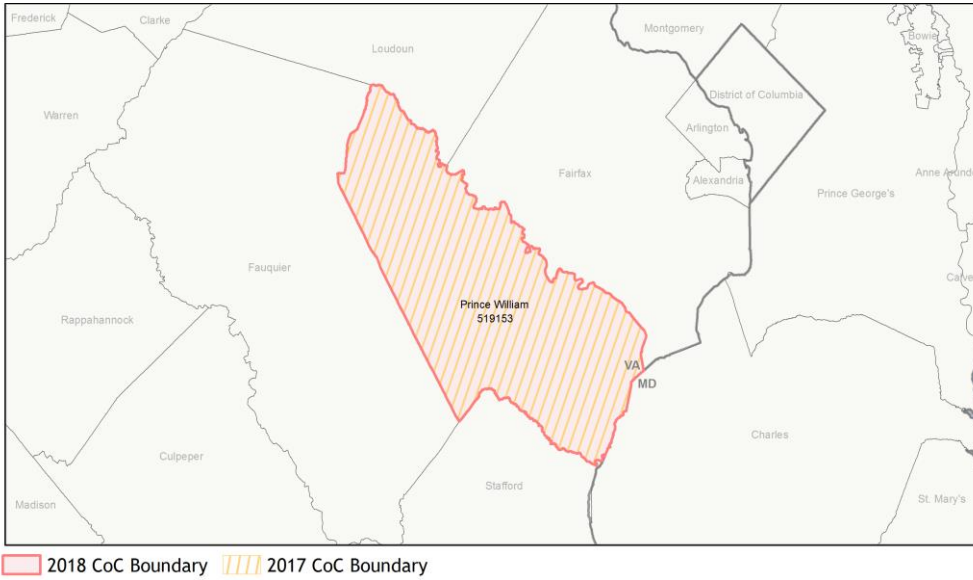
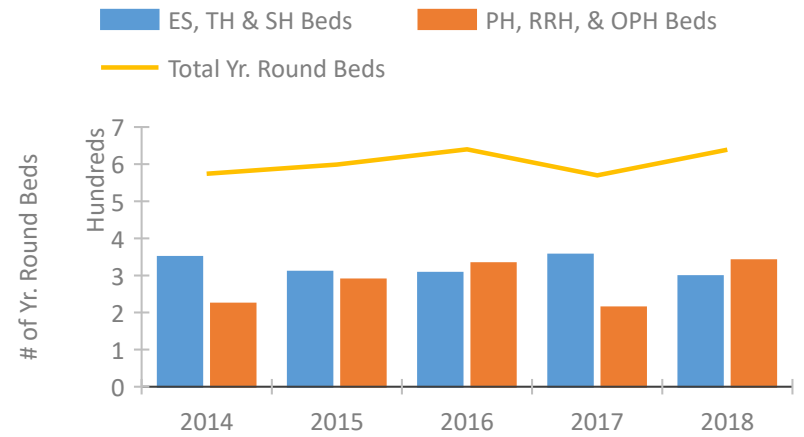


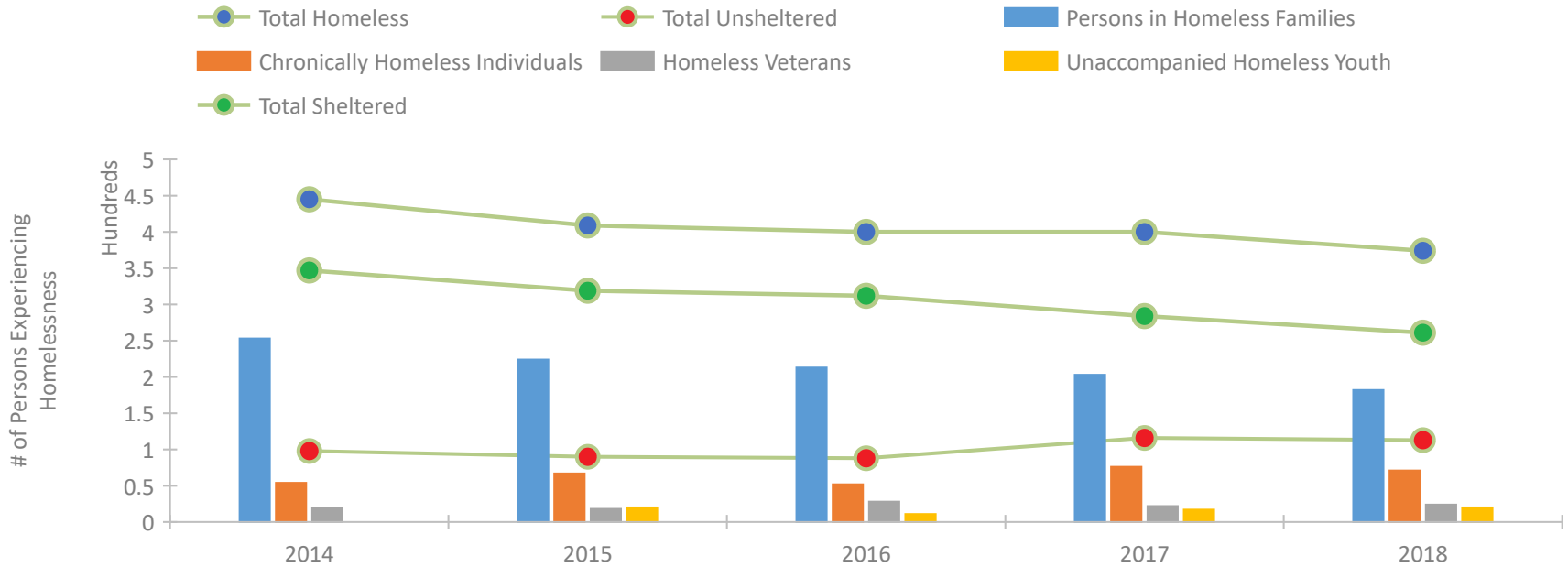
CoC Performance Profile VA-604 Prince William County CoC



Housing Inventory Count by Program Type

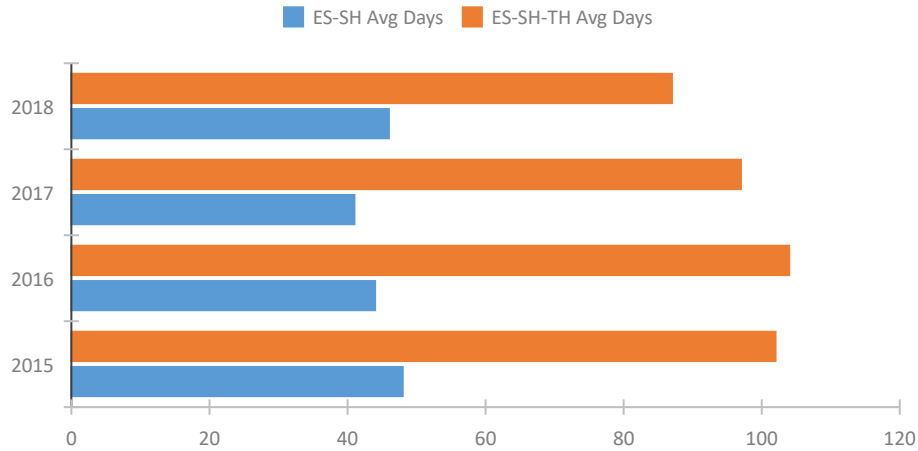


Homeless Population – Point-in-Time (PIT) Count

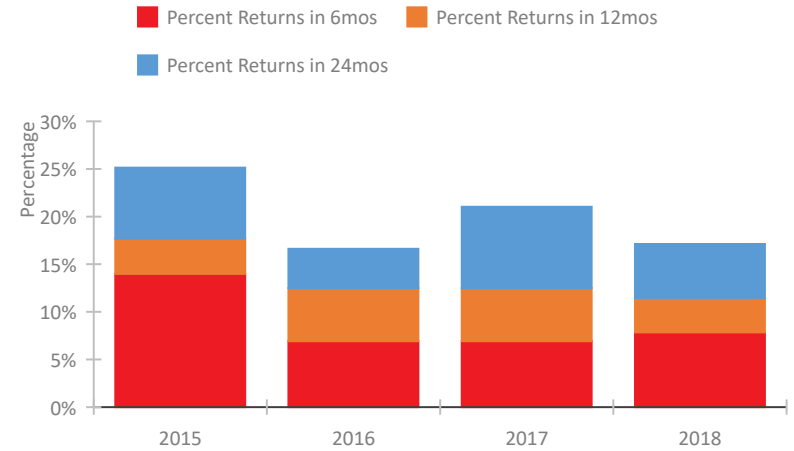


CoC Performance Profile VA-604 Prince William County CoC

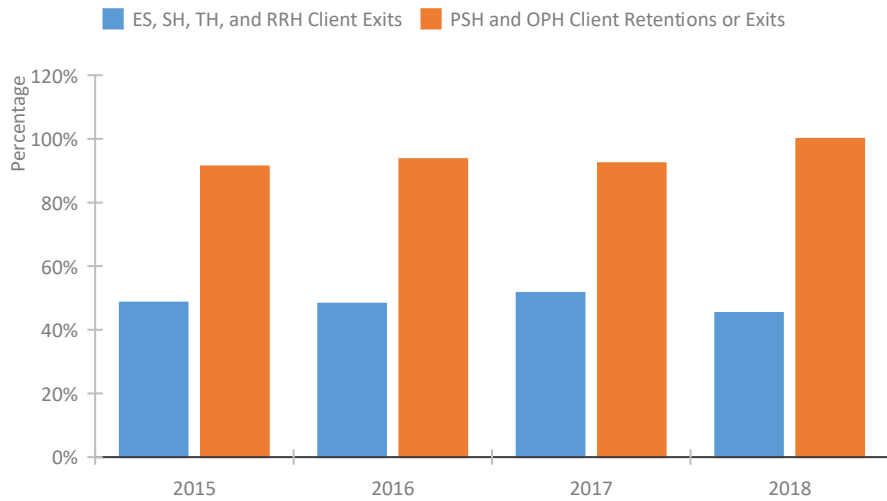
Length of Time Homeless



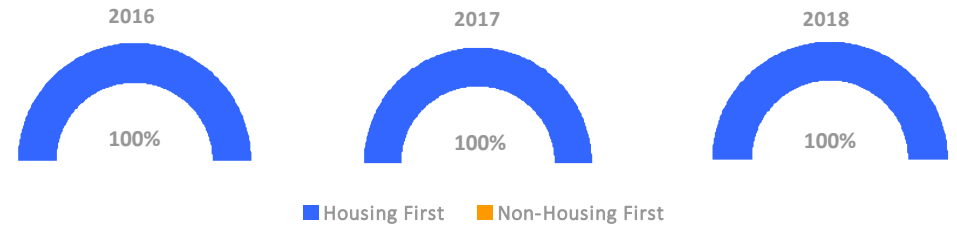
Returns to Homelessness Over Time



Exits to Permanent Housing by Program Type



Proportion of Housing First Projects by Year



Number of Projects by Year

	2016	2017	2018
Housing First Projects	5	5	6
Non-Housing First Projects	0	0	0

Data Summary: VA-604 Prince William County CoC

Point-In-Time Count Summary

	2014	2015	2016	2017	2018	2017-18 Change	% Change
Number of Sheltered Persons in Families	253	218	208	200	179	-21	-10%
Number of Unsheltered Persons in Families	0	6	5	3	3	0	0%
Number of Sheltered Individuals	94	101	104	84	82	-2	-2%
Number of Unsheltered Individuals	98	84	83	113	110	-3	-3%
Total Homeless Persons	445	409	400	400	374	-26	-6%
Number of Sheltered Families	74	71	64	52	53	1	2%
Number of Unsheltered Families	0	1	2	1	1	0	0%
Number of Total Families	74	72	66	53	54	1	2%
Sheltered Chronically Homeless Individuals	12	20	9	14	16	2	14%
Unsheltered Chronically Homeless Individuals	42	47	43	62	55	-7	-11%
Total Chronically Homeless Individuals	54	67	52	76	71	-5	-7%
Sheltered Veterans	11	12	17	9	11	2	22%
Unsheltered Veterans	8	6	11	13	13	0	0%
Total Veterans	19	18	28	22	24	2	9%
Sheltered Unaccompanied Youth (up to 24)	--	14	7	6	9	3	50%
Unsheltered Unaccompanied Youth (up to 24)	--	6	4	11	11	0	0%
Total Unaccompanied Youth (up to 24)	--	20	11	17	20	3	18%

System Performance Measures Summary

	2014	2015	2016	2017	2018	2017-18 Change	% Change
Average Length of Time Homeless (days)	N/A	102	104	97	87	-10	-10.3%
Rate People Return to Homelessness in 6 Months	N/A	14.0%	6.9%	6.9%	7.8%	0.9%	N/A
Number of People who are Homeless for the First Time	N/A	954	1072	1103	1153	50	4.5%
Rate People Exit from ES, SH, TH, and RRH to PH	N/A	48.5%	48.2%	51.6%	45.3%	-6.3%	N/A
Rate People in PSH and OPH Retain or Exit to PH	N/A	91.3%	93.6%	92.3%	100.0%	7.7%	N/A

Housing Inventory Count Summary

	2014	2015	2016	2017	2018	2017-18 Change	% Change
Emergency Shelter (ES)	183	161	158	214	208	-6	-3%
Transitional Housing (TH)	167	149	149	142	90	-52	-37%
Permanent Supportive Housing (PSH)	111	119	140	132	121	-11	-8%
Rapid Re-Housing (RRH)	113	170	193	77	220	143	186%

Award Summary

	2014	2015	2016	2017	2018	2017-18 Change	% Change
Continuum of Care (CoC)	\$593,264	\$527,157	\$564,657	\$601,375	\$721,514	\$120,139	20%
Emergency Solutions Grants (ESG)	\$167,217	\$186,307	\$191,206	\$194,075	\$201,653	\$7,578	4%