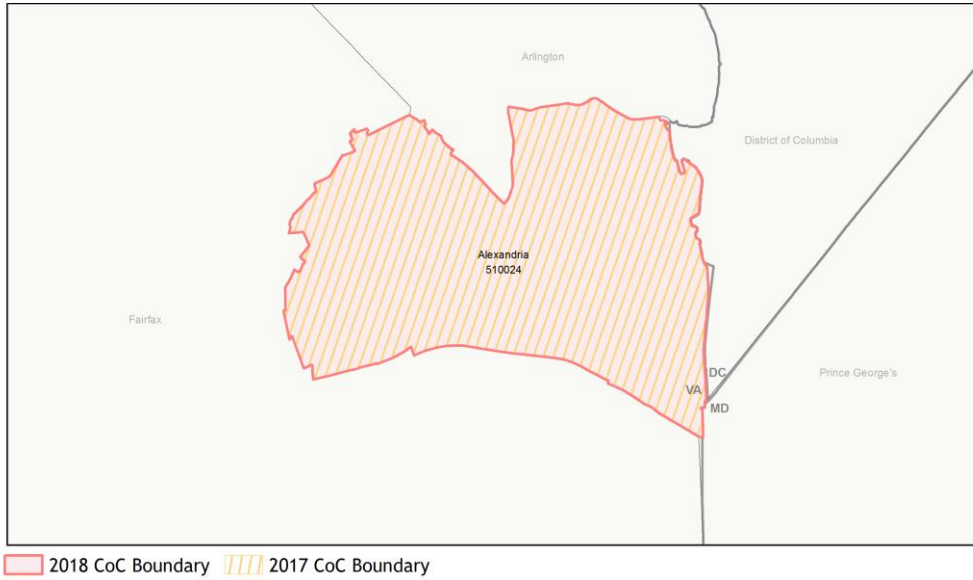
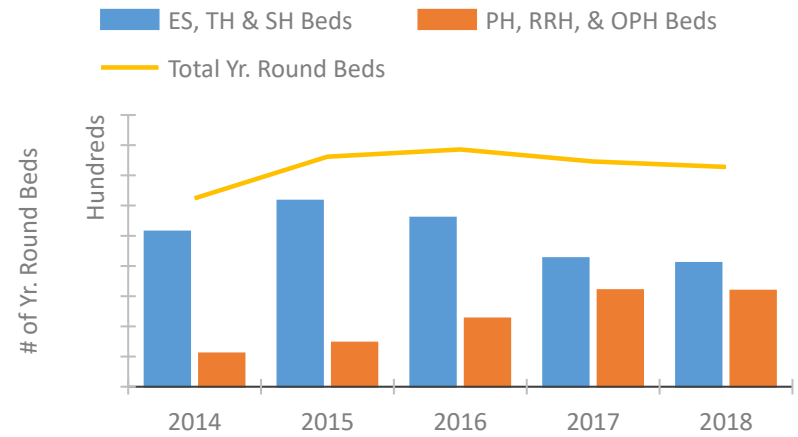


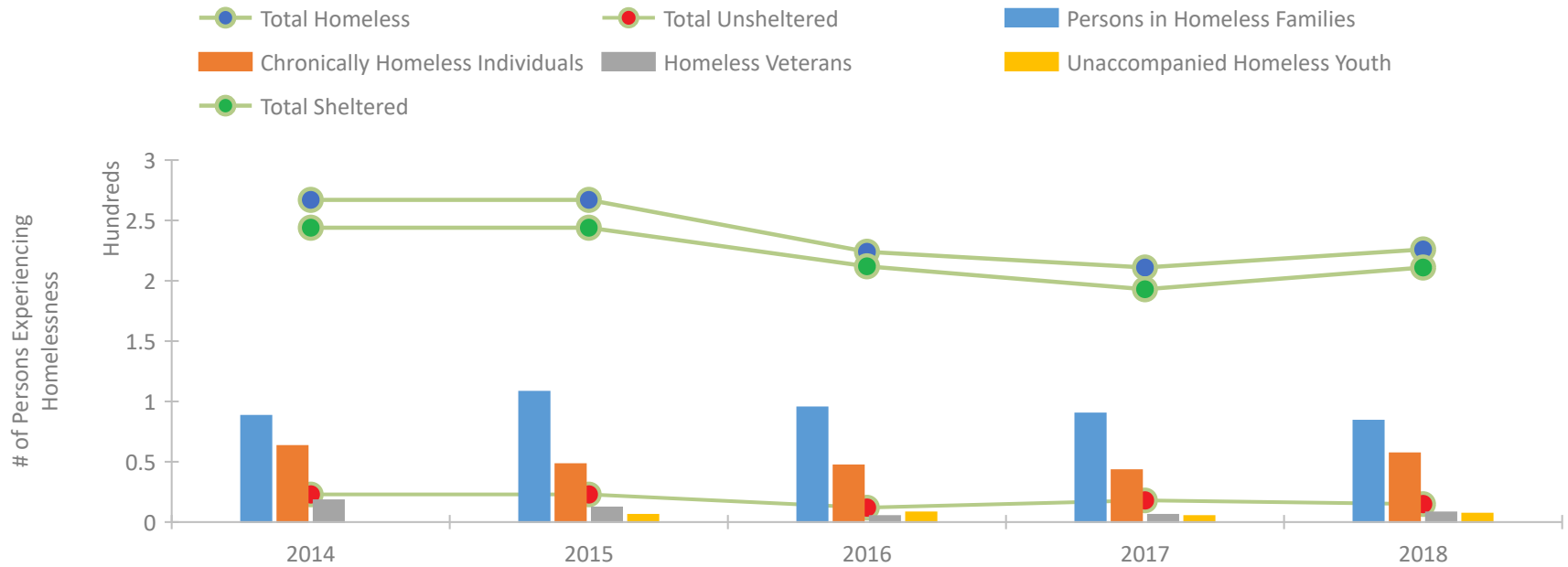
CoC Performance Profile VA-603 Alexandria CoC



Housing Inventory Count by Program Type

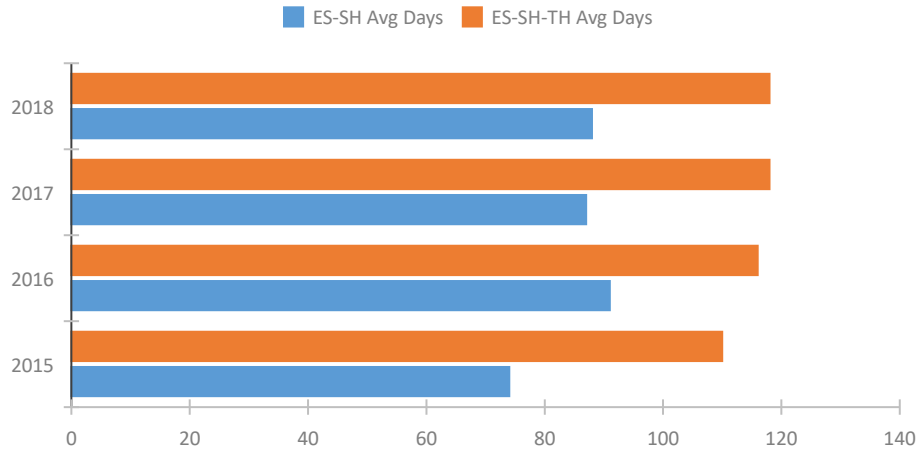


Homeless Population – Point-in-Time (PIT) Count

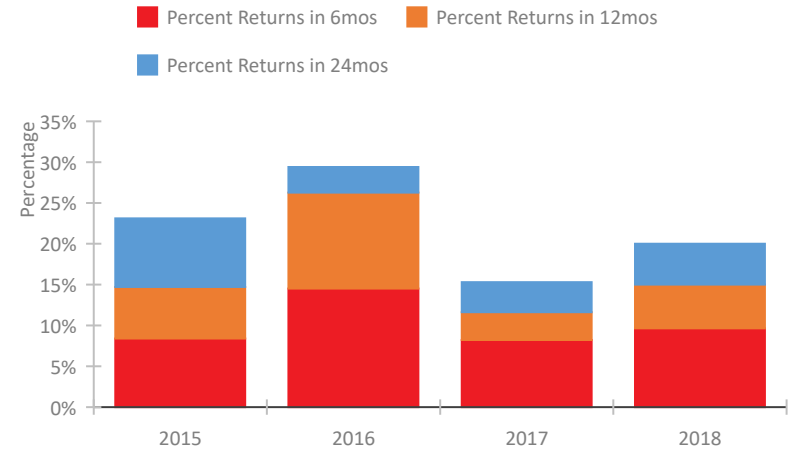


CoC Performance Profile VA-603 Alexandria CoC

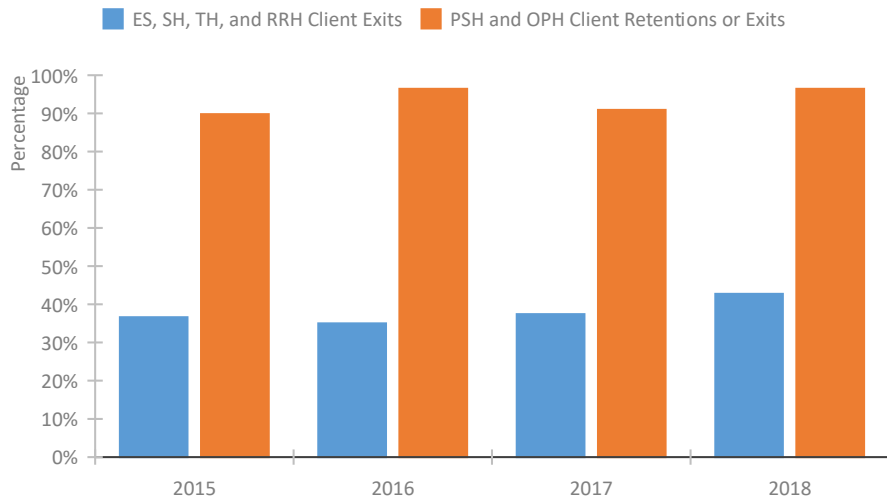
Length of Time Homeless



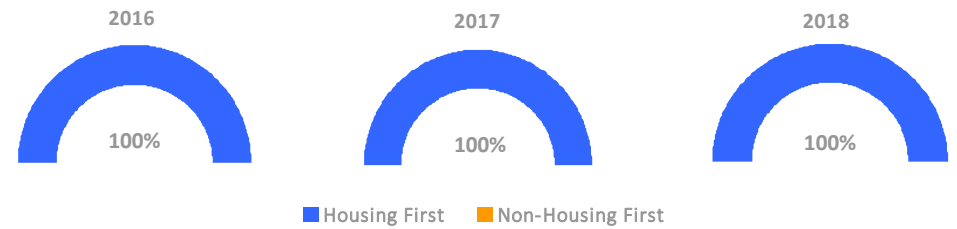
Returns to Homelessness Over Time



Exits to Permanent Housing by Program Type



Proportion of Housing First Projects by Year



Number of Projects by Year

	2016	2017	2018
Housing First Projects	6	7	7
Non-Housing First Projects	0	0	0

Data Summary: VA-603 Alexandria CoC

Point-In-Time Count Summary

	2014	2015	2016	2017	2018	2017-18 Change	% Change
Number of Sheltered Persons in Families	88	108	95	90	84	-6	-7%
Number of Unsheltered Persons in Families	0	0	0	0	0	0	--
Number of Sheltered Individuals	156	136	117	103	127	24	23%
Number of Unsheltered Individuals	23	23	12	18	15	-3	-17%
Total Homeless Persons	267	267	224	211	226	15	7%
Number of Sheltered Families	32	34	28	30	29	-1	-3%
Number of Unsheltered Families	0	0	0	0	0	0	--
Number of Total Families	32	34	28	30	29	-1	-3%
Sheltered Chronically Homeless Individuals	45	32	36	29	48	19	66%
Unsheltered Chronically Homeless Individuals	18	16	11	14	9	-5	-36%
Total Chronically Homeless Individuals	63	48	47	43	57	14	33%
Sheltered Veterans	16	10	5	6	8	2	33%
Unsheltered Veterans	2	2	0	0	0	0	--
Total Veterans	18	12	5	6	8	2	33%
Sheltered Unaccompanied Youth (up to 24)	--	6	8	5	7	2	40%
Unsheltered Unaccompanied Youth (up to 24)	--	0	0	0	0	0	--
Total Unaccompanied Youth (up to 24)	--	6	8	5	7	2	40%

System Performance Measures Summary

	2014	2015	2016	2017	2018	2017-18 Change	% Change
Average Length of Time Homeless (days)	N/A	110	116	118	118	0	0%
Rate People Return to Homelessness in 6 Months	N/A	8.4%	14.5%	8.2%	9.6%	1.4%	N/A
Number of People who are Homeless for the First Time	N/A	568	509	451	533	82	18.2%
Rate People Exit from ES, SH, TH, and RRH to PH	N/A	36.6%	35.0%	37.4%	42.7%	5.3%	N/A
Rate People in PSH and OPH Retain or Exit to PH	N/A	89.8%	96.4%	90.9%	96.4%	5.5%	N/A

Housing Inventory Count Summary

	2014	2015	2016	2017	2018	2017-18 Change	% Change
Emergency Shelter (ES)	162	212	212	145	145	0	0%
Safe Haven (SH)	12	12	12	12	12	0	0%
Transitional Housing (TH)	83	84	56	56	48	-8	-14%
Permanent Supportive Housing (PSH)	37	46	46	47	47	0	0%
Rapid Re-Housing (RRH)	18	27	63	106	109	3	3%
Other Permanent Housing (OPH)	--	--	4	7	3	-4	-57%

Award Summary

	2014	2015	2016	2017	2018	2017-18 Change	% Change
Continuum of Care (CoC)	\$754,055	\$806,998	\$808,196	\$850,002	\$867,832	\$17,830	2%
ESG (VA state recipient - no direct funding)	\$2,526,777	\$2,752,294	\$2,754,274	\$2,902,037	\$2,771,457	(\$130,580)	-4%