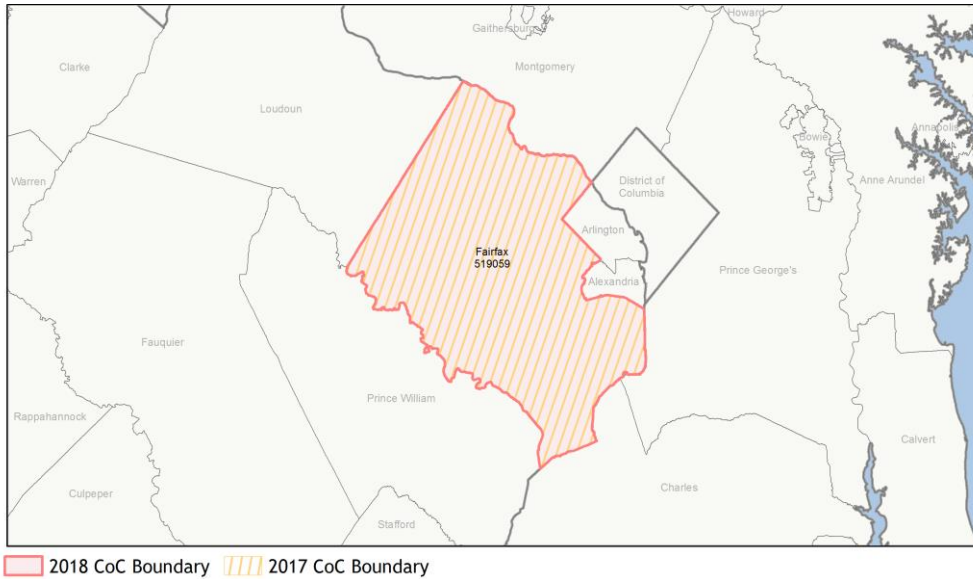
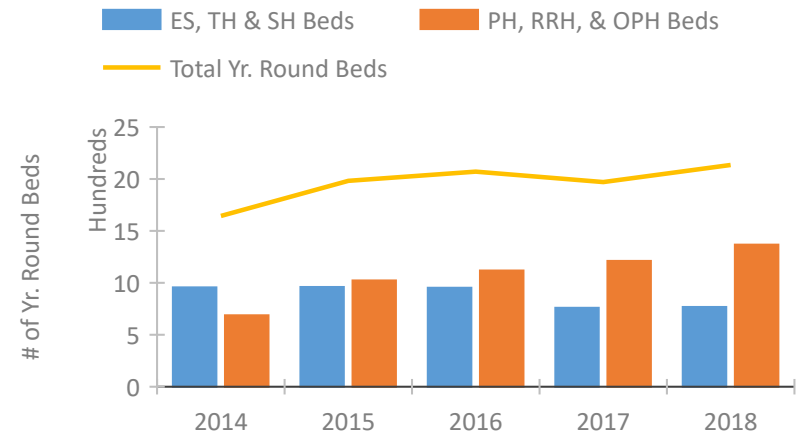


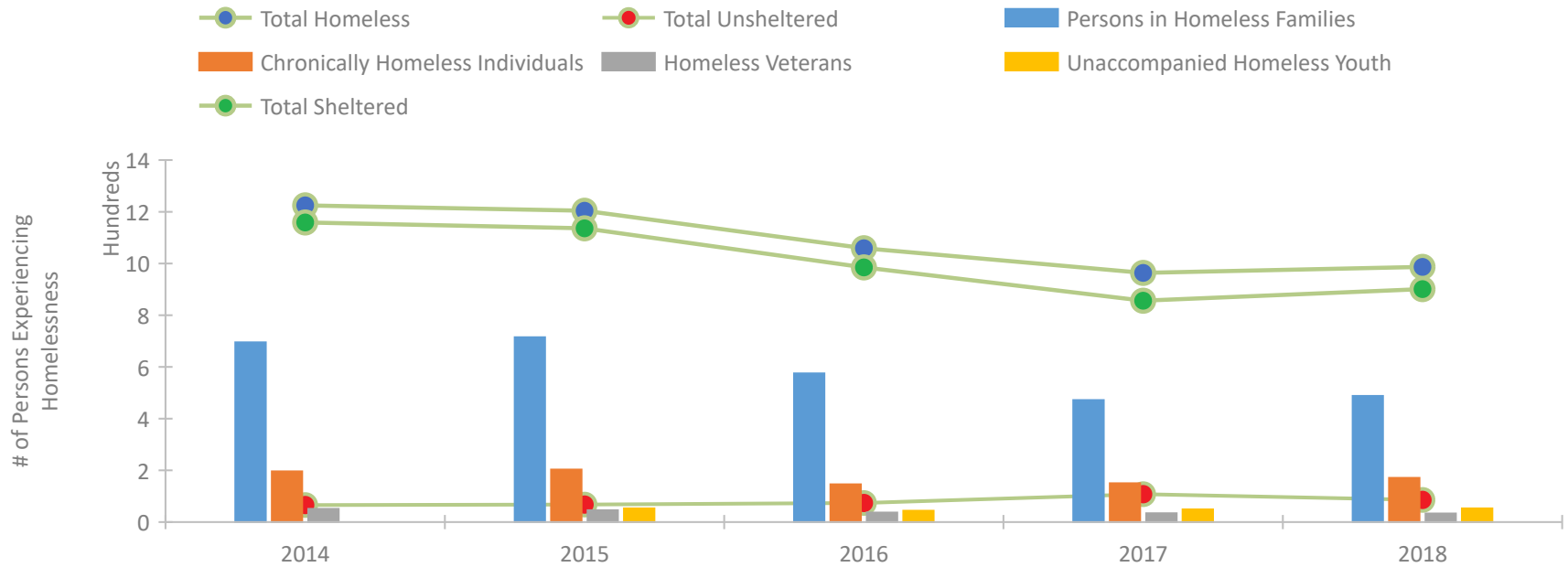
CoC Performance Profile VA-601 Fairfax County CoC



Housing Inventory Count by Program Type

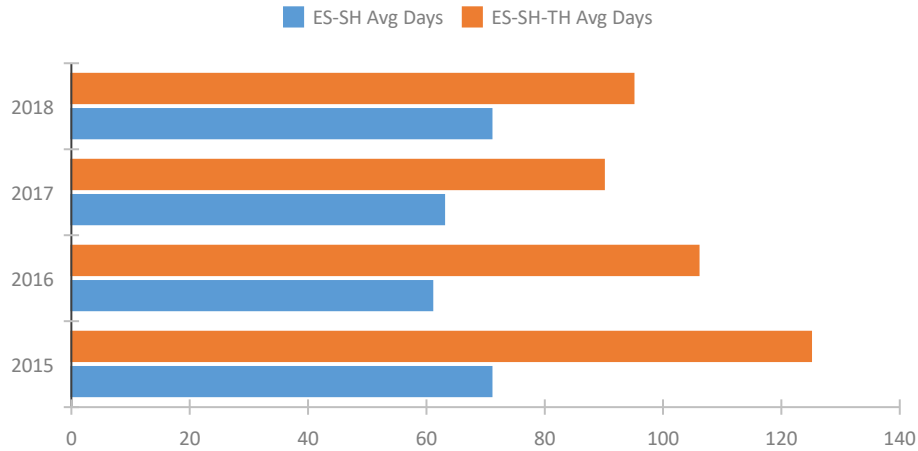


Homeless Population – Point-in-Time (PIT) Count

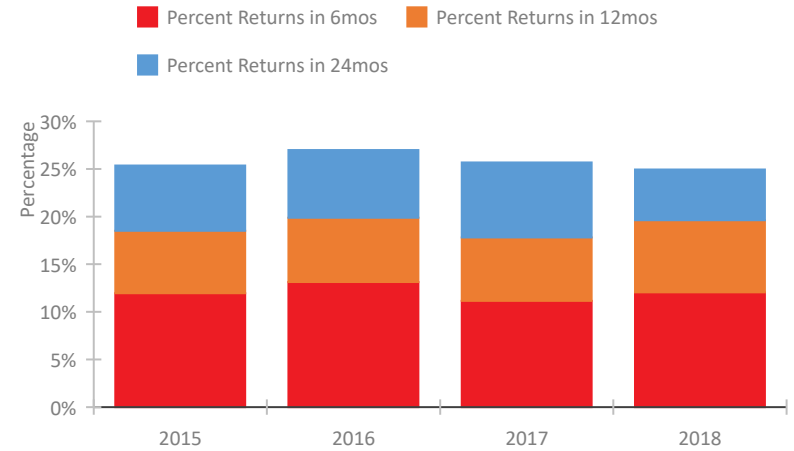


CoC Performance Profile VA-601 Fairfax County CoC

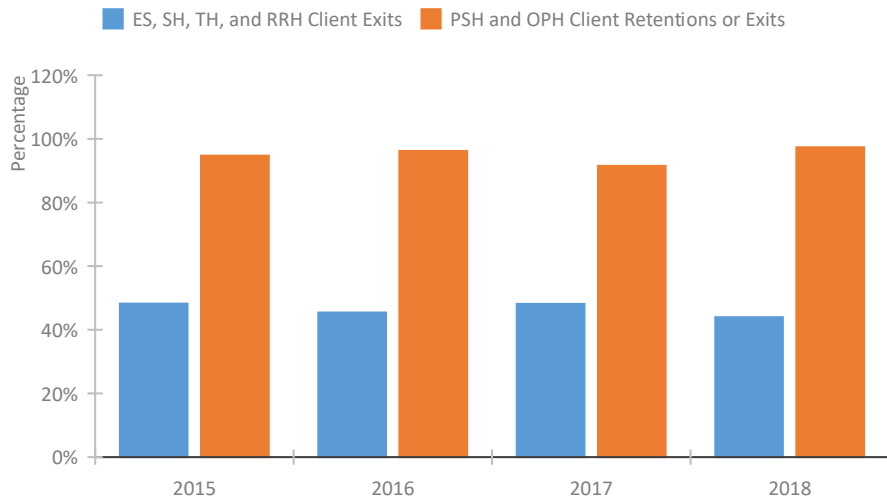
Length of Time Homeless



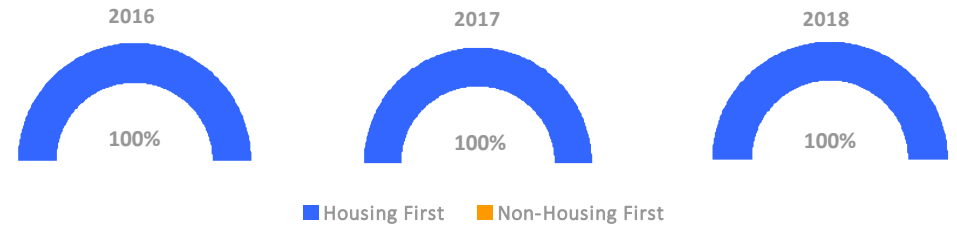
Returns to Homelessness Over Time



Exits to Permanent Housing by Program Type



Proportion of Housing First Projects by Year



Number of Projects by Year

	2016	2017	2018
Housing First Projects	24	25	25
Non-Housing First Projects	0	0	0

Data Summary: VA-601 Fairfax County CoC

Point-In-Time Count Summary

	2014	2015	2016	2017	2018	2017-18 Change	% Change
Number of Sheltered Persons in Families	695	715	575	469	488	19	4%
Number of Unsheltered Persons in Families	0	0	0	3	0	-3	-100%
Number of Sheltered Individuals	464	421	410	387	413	26	7%
Number of Unsheltered Individuals	66	68	74	105	86	-19	-18%
Total Homeless Persons	1,225	1,204	1,059	964	987	23	2%
Number of Sheltered Families	211	213	178	141	151	10	7%
Number of Unsheltered Families	0	0	0	1	0	-1	-100%
Number of Total Families	211	213	178	142	151	9	6%
Sheltered Chronically Homeless Individuals	156	155	103	87	117	30	34%
Unsheltered Chronically Homeless Individuals	40	48	43	63	54	-9	-14%
Total Chronically Homeless Individuals	196	203	146	150	171	21	14%
Sheltered Veterans	45	41	25	21	22	1	5%
Unsheltered Veterans	6	5	12	13	11	-2	-15%
Total Veterans	51	46	37	34	33	-1	-3%
Sheltered Unaccompanied Youth (up to 24)	--	49	43	47	51	4	9%
Unsheltered Unaccompanied Youth (up to 24)	--	4	1	2	2	0	0%
Total Unaccompanied Youth (up to 24)	--	53	44	49	53	4	8%

System Performance Measures Summary

	2014	2015	2016	2017	2018	2017-18 Change	% Change
Average Length of Time Homeless (days)	N/A	125	106	90	95	5	5.6%
Rate People Return to Homelessness in 6 Months	N/A	12.0%	13.1%	11.2%	12.1%	0.9%	N/A
Number of People who are Homeless for the First Time	N/A	2081	2025	2166	1889	-277	-12.8%
Rate People Exit from ES, SH, TH, and RRH to PH	N/A	48.2%	45.4%	48.2%	43.9%	-4.2%	N/A
Rate People in PSH and OPH Retain or Exit to PH	N/A	94.7%	96.2%	91.5%	97.4%	5.9%	N/A

Housing Inventory Count Summary

	2014	2015	2016	2017	2018	2017-18 Change	% Change
Emergency Shelter (ES)	408	477	473	504	494	-10	-2%
Transitional Housing (TH)	540	483	479	256	274	18	7%
Permanent Supportive Housing (PSH)	476	555	641	693	683	-10	-1%
Rapid Re-Housing (RRH)	204	401	195	210	465	255	121%
Other Permanent Housing (OPH)	8	67	283	308	220	-88	-29%

Award Summary

	2014	2015	2016	2017	2018	2017-18 Change	% Change
Continuum of Care (CoC)	\$7,655,650	\$8,373,285	\$8,421,041	\$8,874,225	\$9,126,856	\$252,631	3%
Emergency Solutions Grants (ESG)	\$385,886	\$431,214	\$438,751	\$443,226	\$447,834	\$4,608	1%