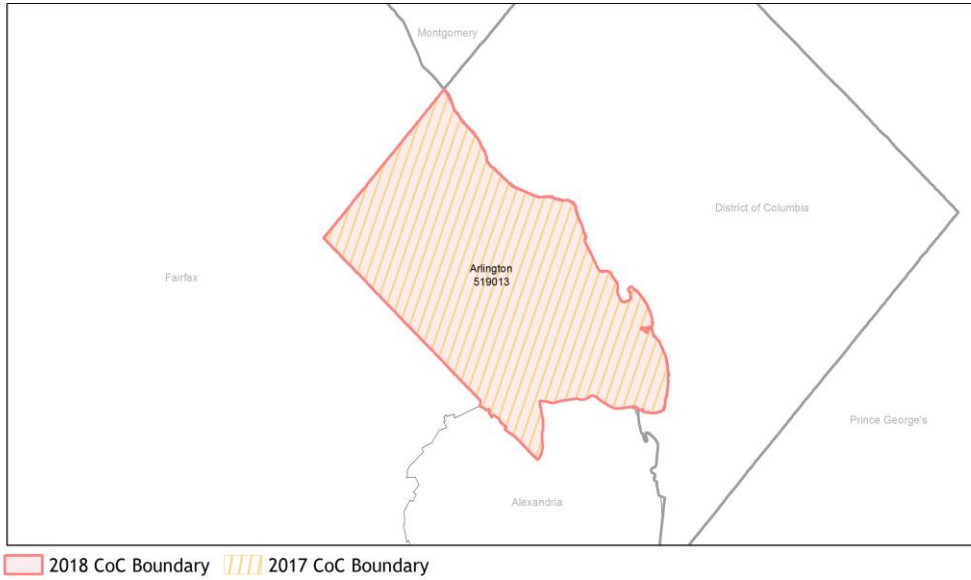
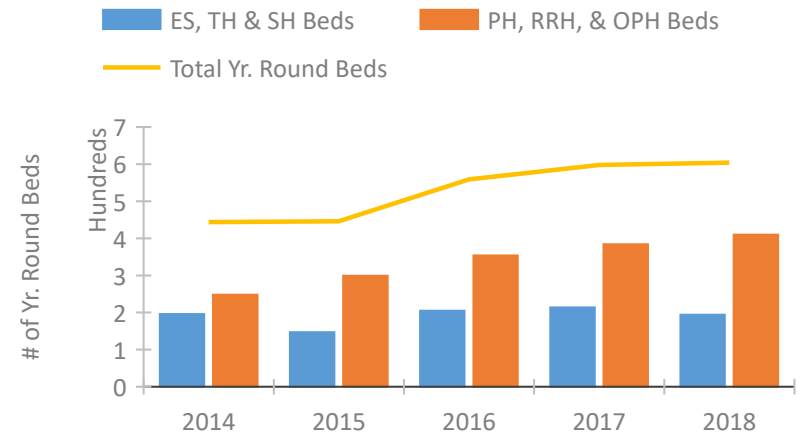


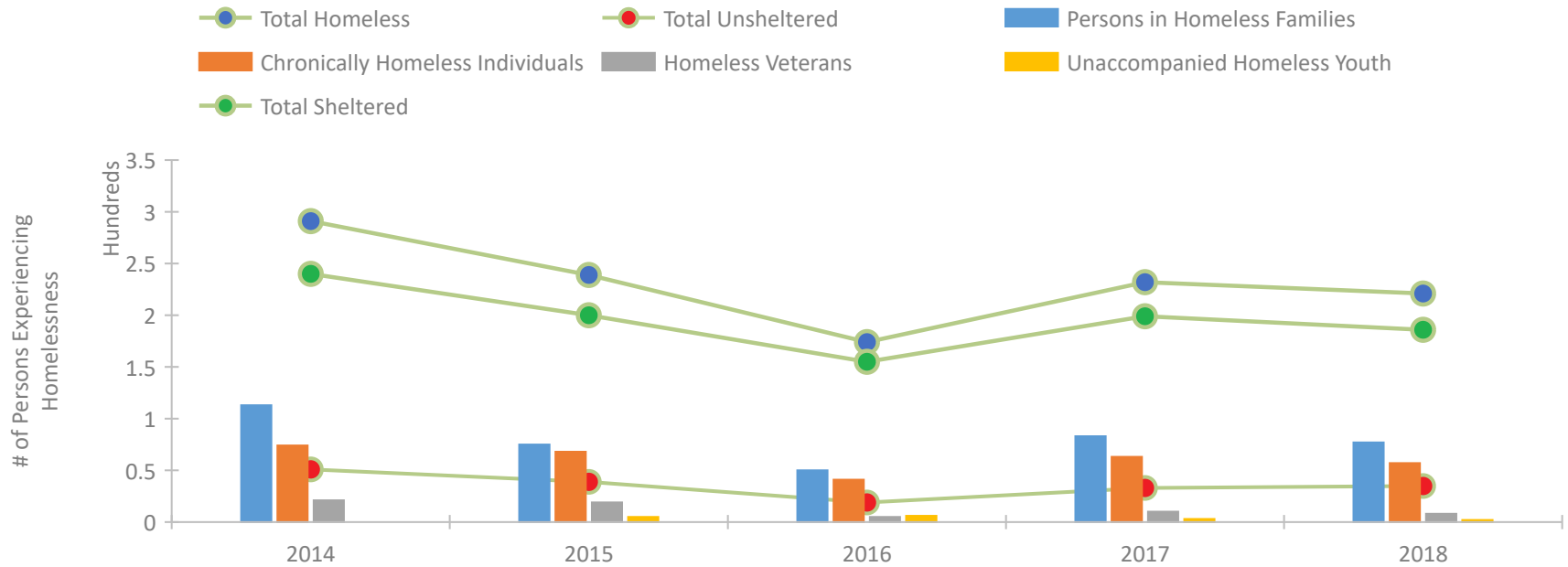
CoC Performance Profile VA-600 Arlington County CoC



Housing Inventory Count by Program Type

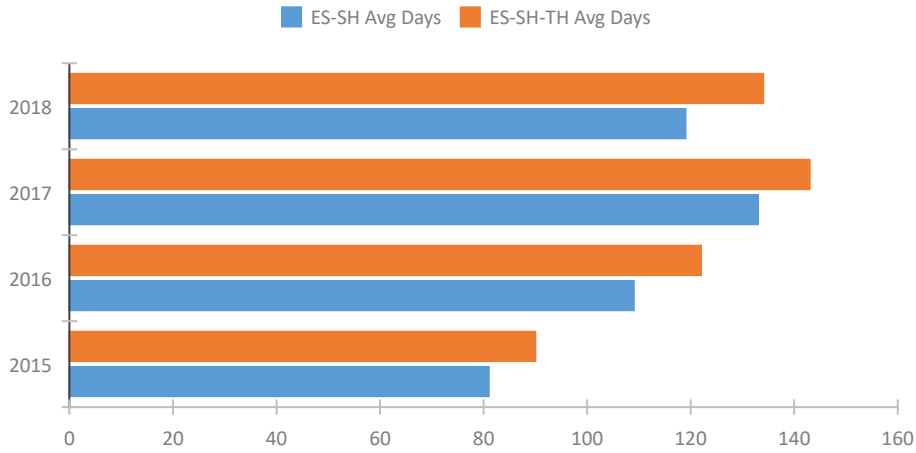


Homeless Population – Point-in-Time (PIT) Count

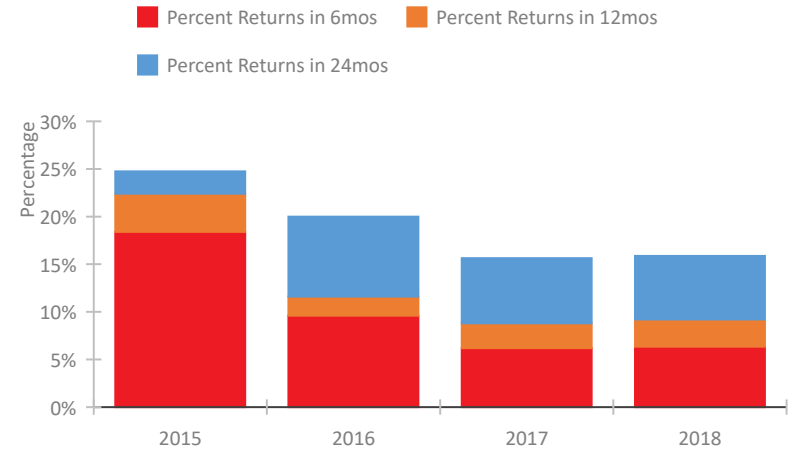


CoC Performance Profile VA-600 Arlington County CoC

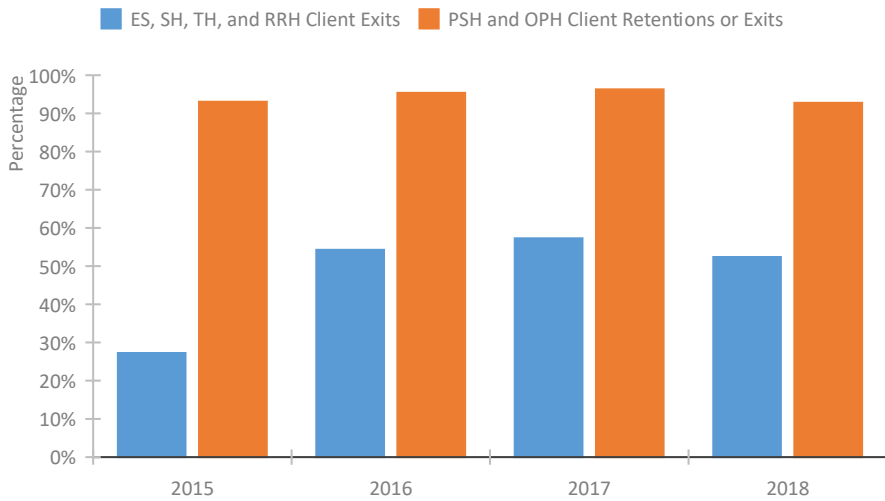
Length of Time Homeless



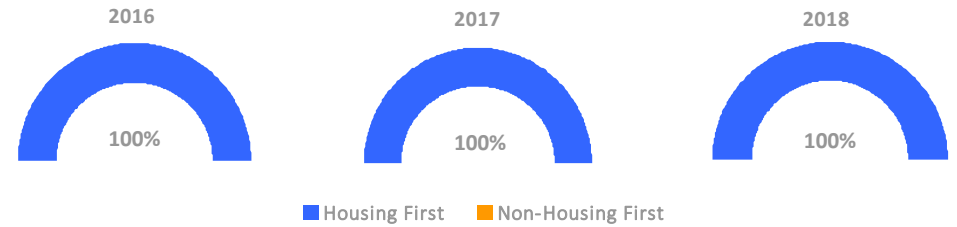
Returns to Homelessness Over Time



Exits to Permanent Housing by Program Type



Proportion of Housing First Projects by Year



Number of Projects by Year

	2016	2017	2018
Housing First Projects	10	12	12
Non-Housing First Projects	0	0	0

Data Summary: VA-600 Arlington County CoC

Point-In-Time Count Summary

	2014	2015	2016	2017	2018	2017-18 Change	% Change
Number of Sheltered Persons in Families	113	75	50	83	77	-6	-7%
Number of Unsheltered Persons in Families	0	0	0	0	0	0	--
Number of Sheltered Individuals	127	125	105	116	109	-7	-6%
Number of Unsheltered Individuals	51	39	19	33	35	2	6%
Total Homeless Persons	291	239	174	232	221	-11	-5%
Number of Sheltered Families	35	22	18	30	28	-2	-7%
Number of Unsheltered Families	0	0	0	0	0	0	--
Number of Total Families	35	22	18	30	28	-2	-7%
Sheltered Chronically Homeless Individuals	38	49	28	42	30	-12	-29%
Unsheltered Chronically Homeless Individuals	36	19	13	21	27	6	29%
Total Chronically Homeless Individuals	74	68	41	63	57	-6	-10%
Sheltered Veterans	13	12	5	9	6	-3	-33%
Unsheltered Veterans	8	7	0	1	2	1	100%
Total Veterans	21	19	5	10	8	-2	-20%
Sheltered Unaccompanied Youth (up to 24)	--	5	6	3	2	-1	-33%
Unsheltered Unaccompanied Youth (up to 24)	--	0	0	0	0	0	--
Total Unaccompanied Youth (up to 24)	--	5	6	3	2	-1	-33%

System Performance Measures Summary

	2014	2015	2016	2017	2018	2017-18 Change	% Change
Average Length of Time Homeless (days)	N/A	90	122	143	134	-9	-6.3%
Rate People Return to Homelessness in 6 Months	N/A	18.4%	9.6%	6.2%	6.3%	0.2%	N/A
Number of People who are Homeless for the First Time	N/A	532	177	195	352	157	80.5%
Rate People Exit from ES, SH, TH, and RRH to PH	N/A	27.2%	54.3%	57.3%	52.4%	-4.9%	N/A
Rate People in PSH and OPH Retain or Exit to PH	N/A	93.0%	95.4%	96.3%	92.8%	-3.5%	N/A

Housing Inventory Count Summary

	2014	2015	2016	2017	2018	2017-18 Change	% Change
Emergency Shelter (ES)	126	125	179	188	180	-8	-4%
Transitional Housing (TH)	64	16	20	20	14	-6	-30%
Permanent Supportive Housing (PSH)	142	174	193	215	239	24	11%
Rapid Re-Housing (RRH)	106	125	161	169	151	-18	-11%
Other Permanent Housing (OPH)	--	--	--	--	20	--	--

Award Summary

	2014	2015	2016	2017	2018	2017-18 Change	% Change
Continuum of Care (CoC)	\$1,920,096	\$2,459,677	\$2,539,044	\$2,685,996	\$2,832,598	\$146,602	5%
ESG (VA state recipient - no direct funding)	\$2,526,777	\$2,752,294	\$2,754,274	\$2,902,037	\$2,771,457	(\$130,580)	-4%