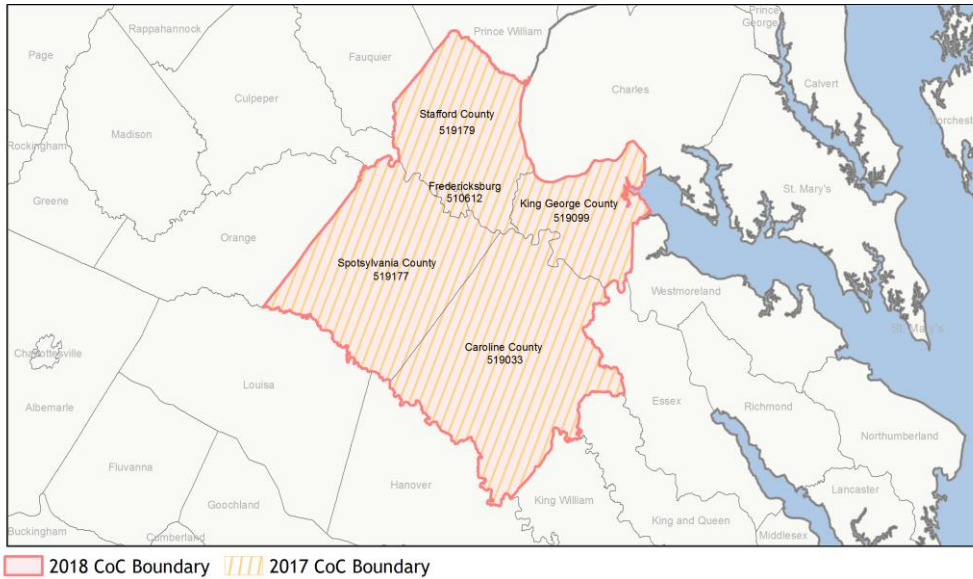
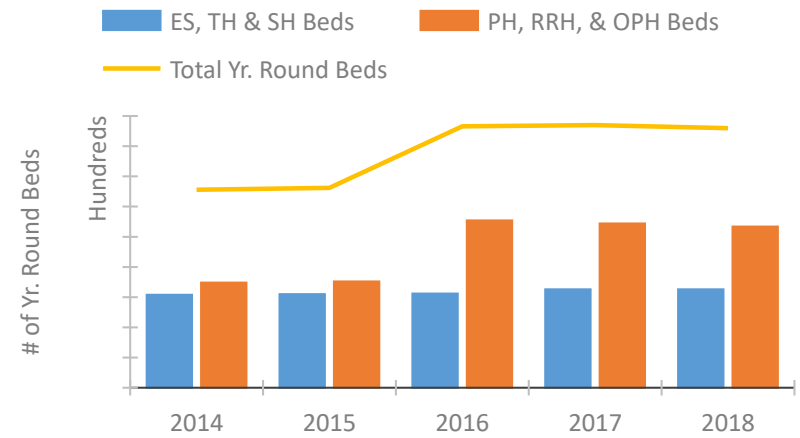


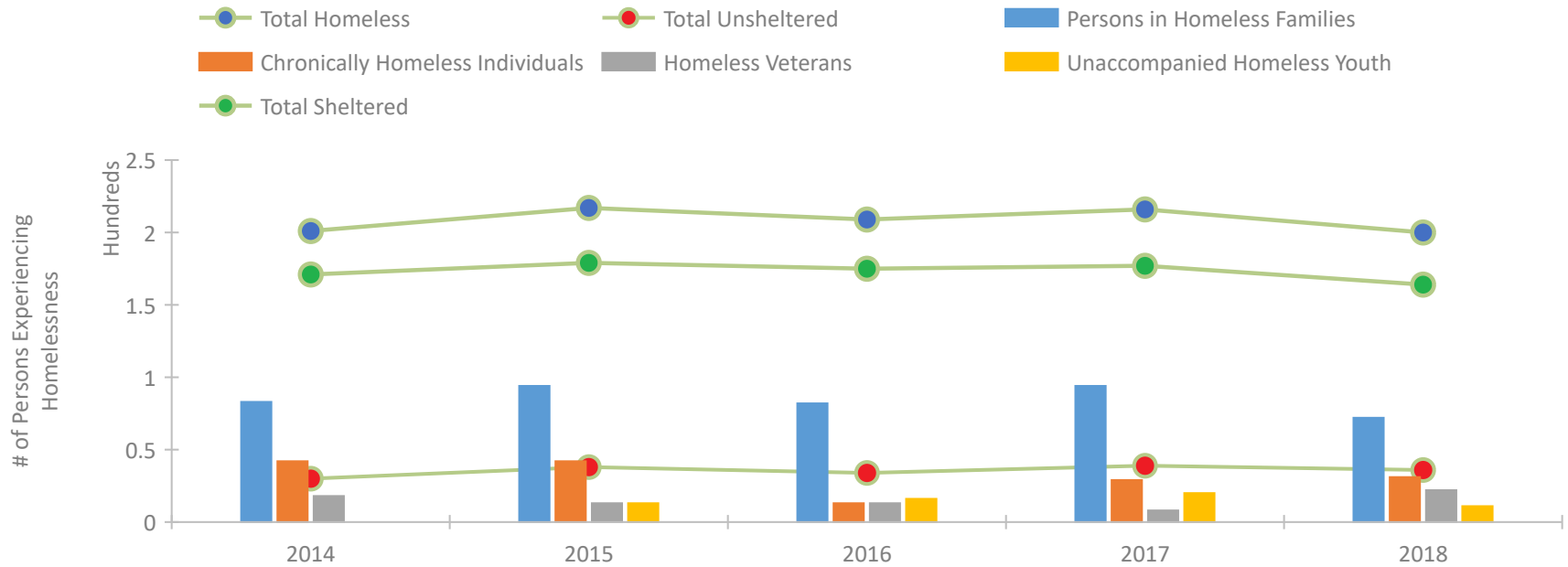
CoC Performance Profile VA-514 Fredericksburg/Spotsylvania, Stafford Counties CoC



Housing Inventory Count by Program Type

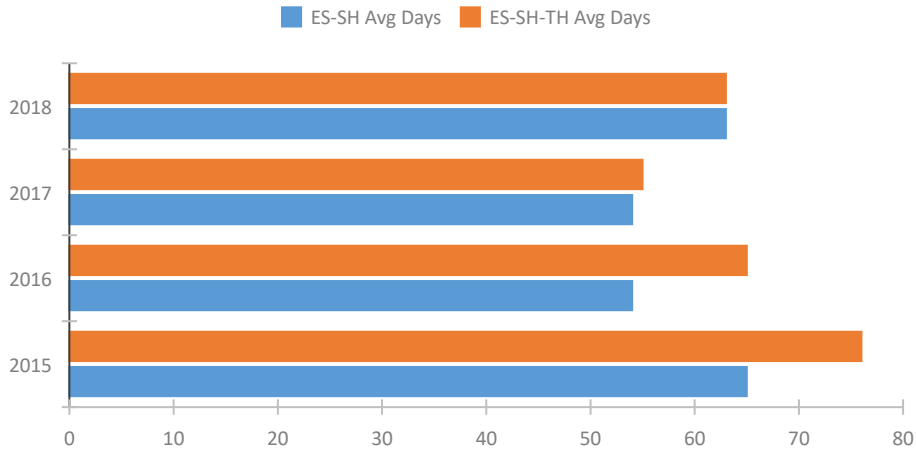


Homeless Population – Point-in-Time (PIT) Count

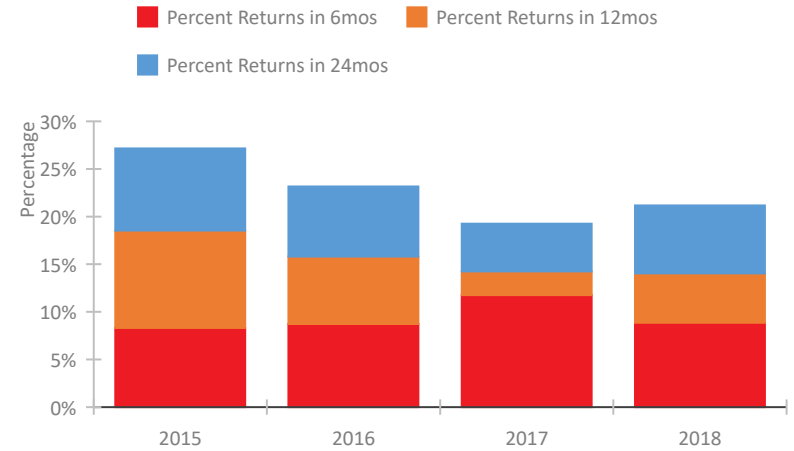


CoC Performance Profile VA-514 Fredericksburg/Spotsylvania, Stafford Counties CoC

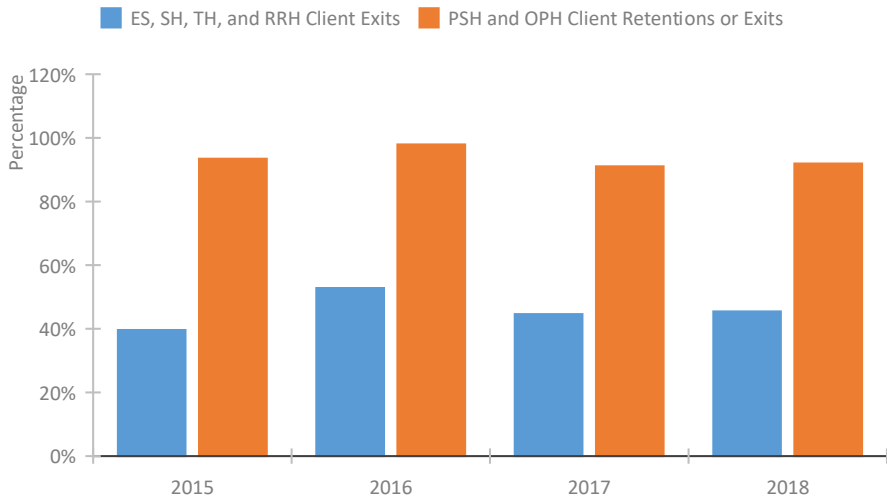
Length of Time Homeless



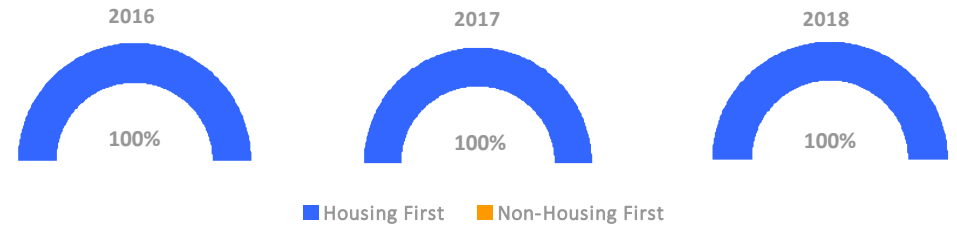
Returns to Homelessness Over Time



Exits to Permanent Housing by Program Type



Proportion of Housing First Projects by Year



Number of Projects by Year

	2016	2017	2018
Housing First Projects	4	3	4
Non-Housing First Projects	0	0	0

Data Summary: VA-514 Fredericksburg/Spotsylvania, Stafford Counties CoC

Point-In-Time Count Summary

	2014	2015	2016	2017	2018	2017-18 Change	% Change
Number of Sheltered Persons in Families	83	85	82	94	69	-25	-27%
Number of Unsheltered Persons in Families	0	9	0	0	3	3	100%
Number of Sheltered Individuals	88	94	93	83	95	12	14%
Number of Unsheltered Individuals	30	29	34	39	33	-6	-15%
Total Homeless Persons	201	217	209	216	200	-16	-7%
Number of Sheltered Families	28	27	22	29	19	-10	-34%
Number of Unsheltered Families	0	2	0	0	1	1	100%
Number of Total Families	28	29	22	29	20	-9	-31%
Sheltered Chronically Homeless Individuals	25	17	5	15	18	3	20%
Unsheltered Chronically Homeless Individuals	17	25	8	14	13	-1	-7%
Total Chronically Homeless Individuals	42	42	13	29	31	2	7%
Sheltered Veterans	10	9	9	8	18	10	125%
Unsheltered Veterans	8	4	4	0	4	4	100%
Total Veterans	18	13	13	8	22	14	175%
Sheltered Unaccompanied Youth (up to 24)	--	9	9	19	10	-9	-47%
Unsheltered Unaccompanied Youth (up to 24)	--	4	7	1	1	0	0%
Total Unaccompanied Youth (up to 24)	--	13	16	20	11	-9	-45%

System Performance Measures Summary

	2014	2015	2016	2017	2018	2017-18 Change	% Change
Average Length of Time Homeless (days)	N/A	76	65	55	63	8	14.5%
Rate People Return to Homelessness in 6 Months	N/A	8.3%	8.7%	11.8%	8.9%	-2.9%	N/A
Number of People who are Homeless for the First Time	N/A	593	608	659	615	-44	-6.7%
Rate People Exit from ES, SH, TH, and RRH to PH	N/A	39.6%	52.8%	44.6%	45.5%	0.9%	N/A
Rate People in PSH and OPH Retain or Exit to PH	N/A	93.4%	98.0%	91.0%	91.9%	0.9%	N/A

Housing Inventory Count Summary

	2014	2015	2016	2017	2018	2017-18 Change	% Change
Emergency Shelter (ES)	116	117	118	163	163	0	0%
Permanent Supportive Housing (PSH)	63	54	124	118	97	-21	-18%
Rapid Re-Housing (RRH)	111	122	153	154	170	16	10%

Award Summary

	2014	2015	2016	2017	2018	2017-18 Change	% Change
Continuum of Care (CoC)	\$162,361	\$273,082	\$273,731	\$309,879	\$320,381	\$10,502	3%
ESG (VA state recipient - no direct funding)	\$2,526,777	\$2,752,294	\$2,754,274	\$2,902,037	\$2,771,457	(\$130,580)	-4%