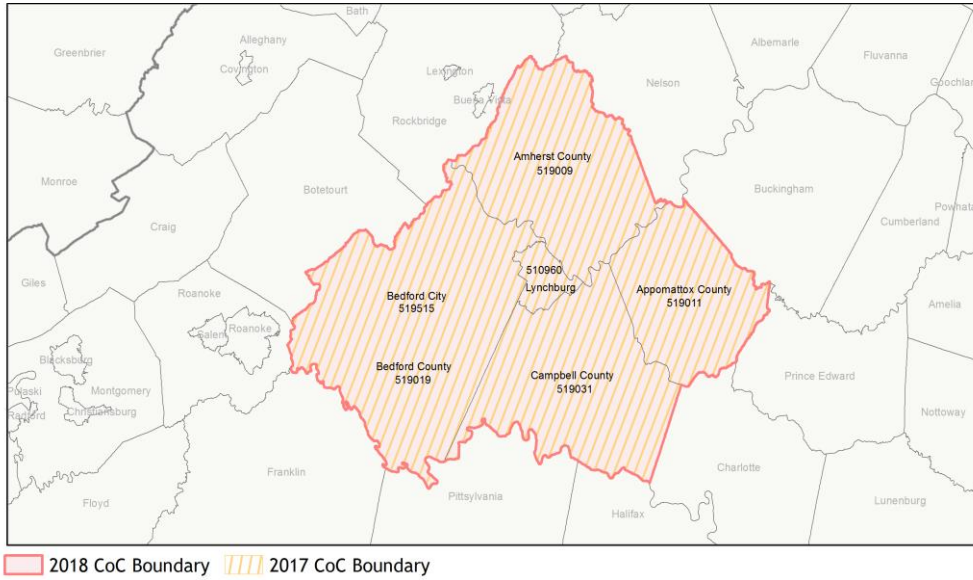
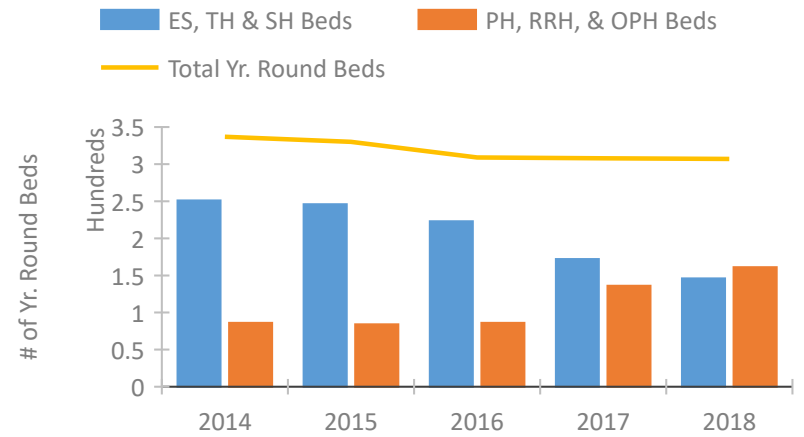


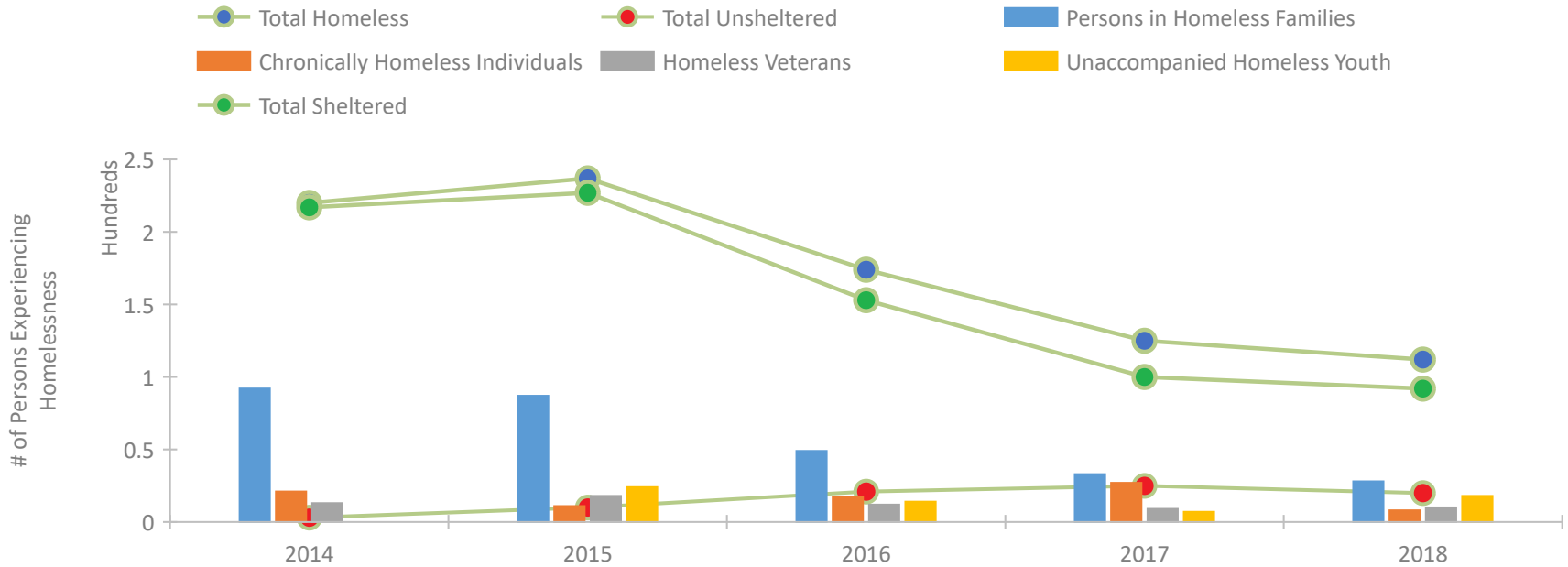
CoC Performance Profile VA-508 Lynchburg CoC



Housing Inventory Count by Program Type

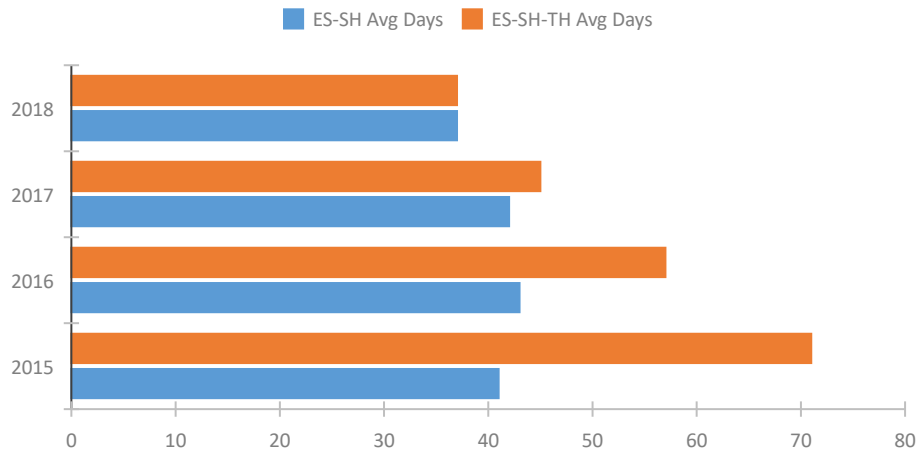


Homeless Population – Point-in-Time (PIT) Count

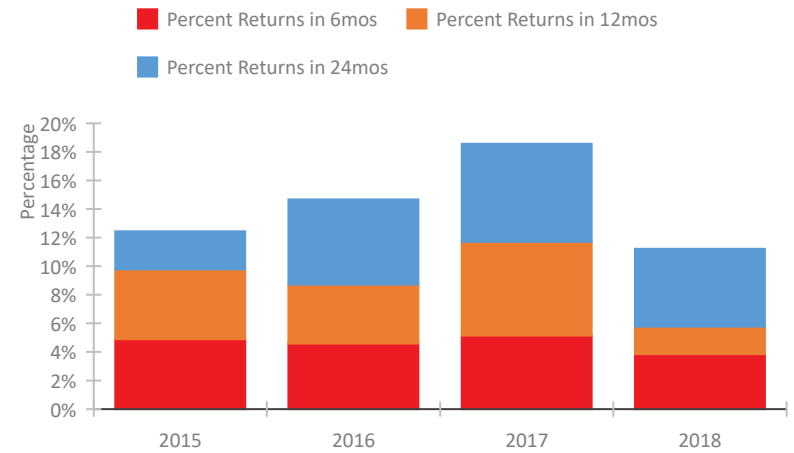


CoC Performance Profile VA-508 Lynchburg CoC

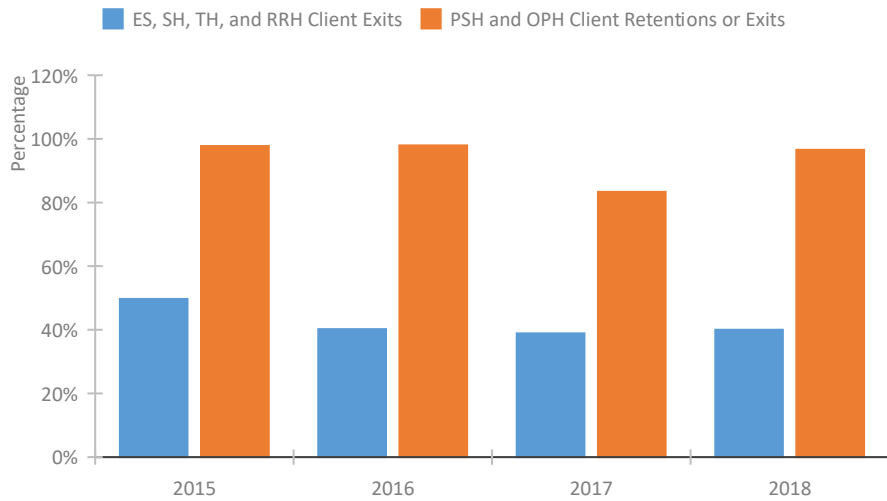
Length of Time Homeless



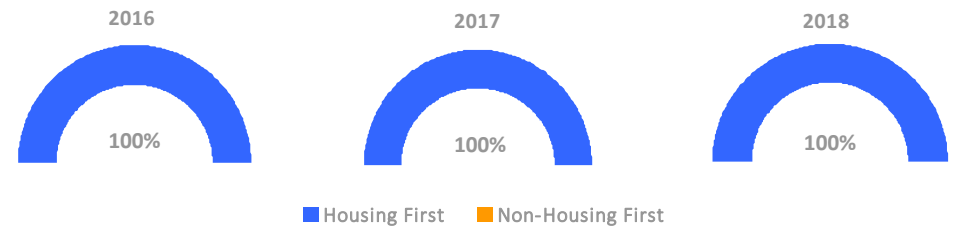
Returns to Homelessness Over Time



Exits to Permanent Housing by Program Type



Proportion of Housing First Projects by Year



Number of Projects by Year

	2016	2017	2018
Housing First Projects	4	5	6
Non-Housing First Projects	0	0	0

Data Summary: VA-508 Lynchburg CoC

Point-In-Time Count Summary

	2014	2015	2016	2017	2018	2017-18 Change	% Change
Number of Sheltered Persons in Families	92	87	49	33	28	-5	-15%
Number of Unsheltered Persons in Families	0	0	0	0	0	0	--
Number of Sheltered Individuals	125	140	104	67	64	-3	-4%
Number of Unsheltered Individuals	3	10	21	25	20	-5	-20%
Total Homeless Persons	220	237	174	125	112	-13	-10%
Number of Sheltered Families	26	25	15	10	9	-1	-10%
Number of Unsheltered Families	0	0	0	0	0	0	--
Number of Total Families	26	25	15	10	9	-1	-10%
Sheltered Chronically Homeless Individuals	21	10	10	17	2	-15	-88%
Unsheltered Chronically Homeless Individuals	0	1	7	10	6	-4	-40%
Total Chronically Homeless Individuals	21	11	17	27	8	-19	-70%
Sheltered Veterans	13	15	12	8	8	0	0%
Unsheltered Veterans	0	3	0	1	2	1	100%
Total Veterans	13	18	12	9	10	1	11%
Sheltered Unaccompanied Youth (up to 24)	--	23	13	3	14	11	367%
Unsheltered Unaccompanied Youth (up to 24)	--	1	1	4	4	0	0%
Total Unaccompanied Youth (up to 24)	--	24	14	7	18	11	157%

System Performance Measures Summary

	2014	2015	2016	2017	2018	2017-18 Change	% Change
Average Length of Time Homeless (days)	N/A	71	57	45	37	-8	-17.8%
Rate People Return to Homelessness in 6 Months	N/A	4.9%	4.6%	5.1%	3.8%	-1.3%	N/A
Number of People who are Homeless for the First Time	N/A	579	579	604	590	-14	-2.3%
Rate People Exit from ES, SH, TH, and RRH to PH	N/A	49.7%	40.2%	38.9%	40.0%	1.1%	N/A
Rate People in PSH and OPH Retain or Exit to PH	N/A	97.7%	98.0%	83.3%	96.6%	13.2%	N/A

Housing Inventory Count Summary

	2014	2015	2016	2017	2018	2017-18 Change	% Change
Emergency Shelter (ES)	138	152	152	146	146	0	0%
Permanent Supportive Housing (PSH)	47	39	42	50	71	21	42%
Rapid Re-Housing (RRH)	39	45	44	76	90	14	18%

Award Summary

	2014	2015	2016	2017	2018	2017-18 Change	% Change
Continuum of Care (CoC)	\$383,287	\$338,887	\$359,813	\$370,158	\$371,921	\$1,763	0%
ESG (VA state recipient - no direct funding)	\$2,526,777	\$2,752,294	\$2,754,274	\$2,902,037	\$2,771,457	(\$130,580)	-4%