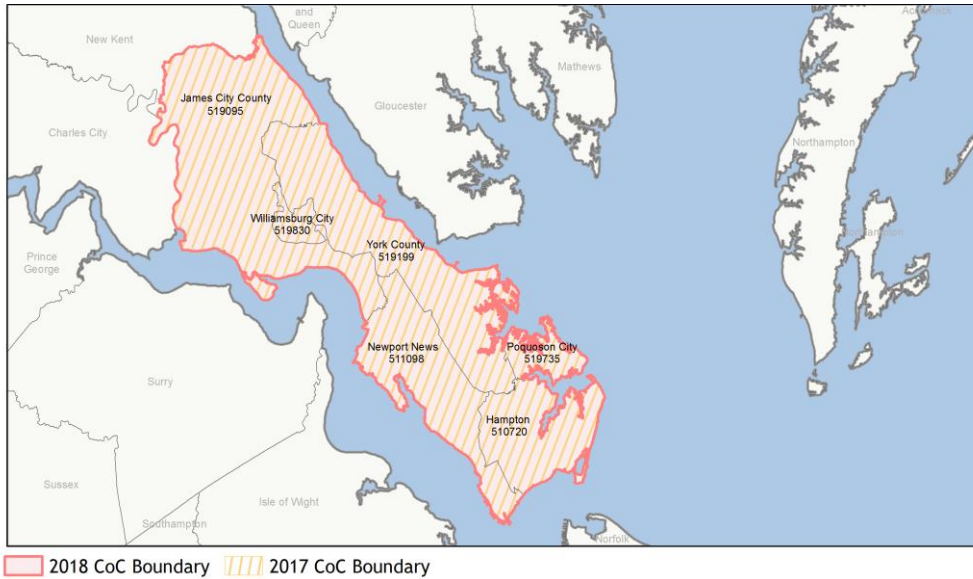
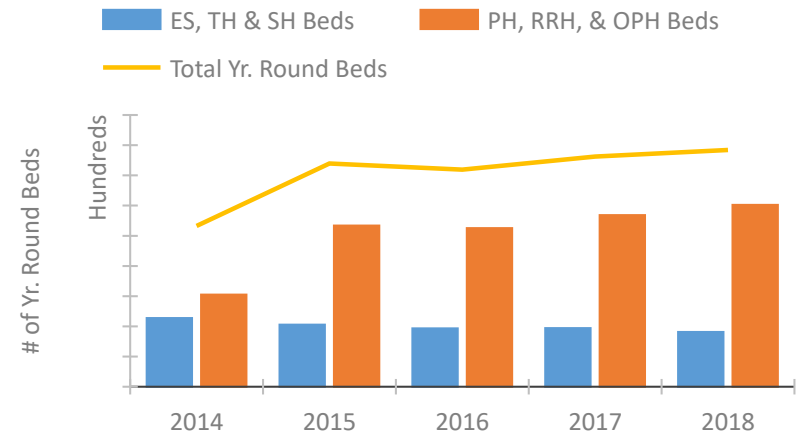


CoC Performance Profile VA-505

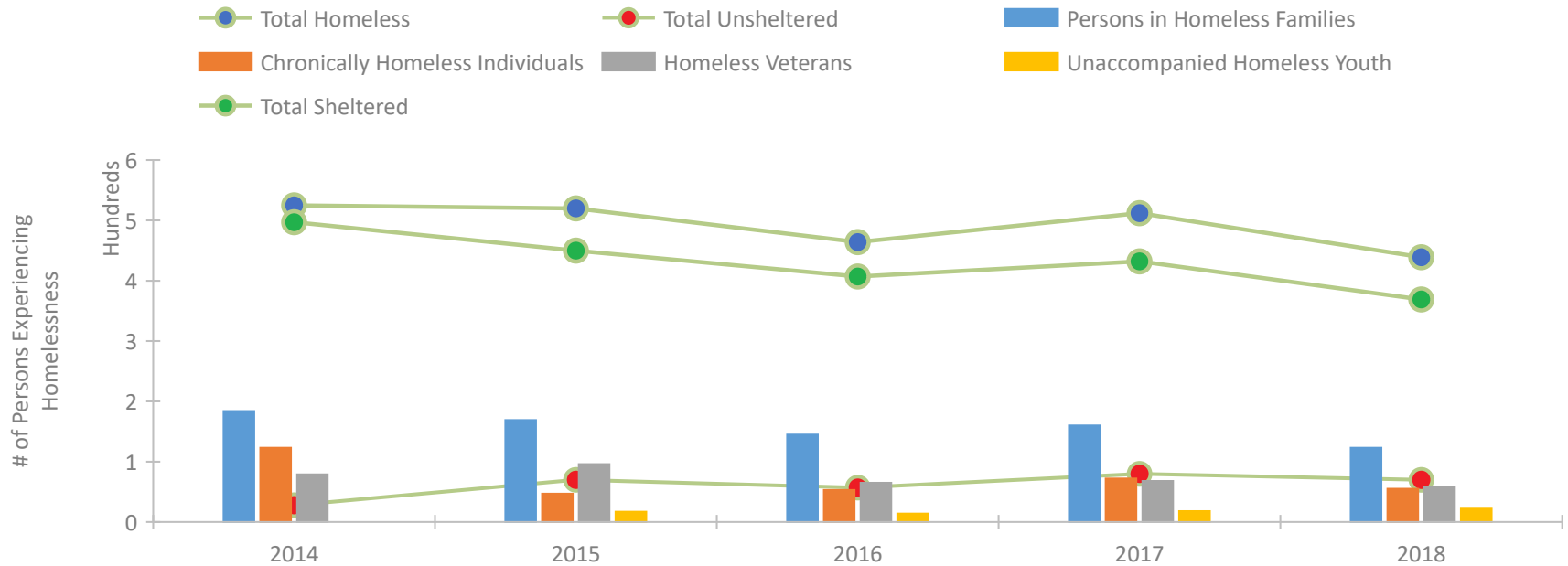
Newport News, Hampton/Virginia Peninsula CoC



Housing Inventory Count by Program Type

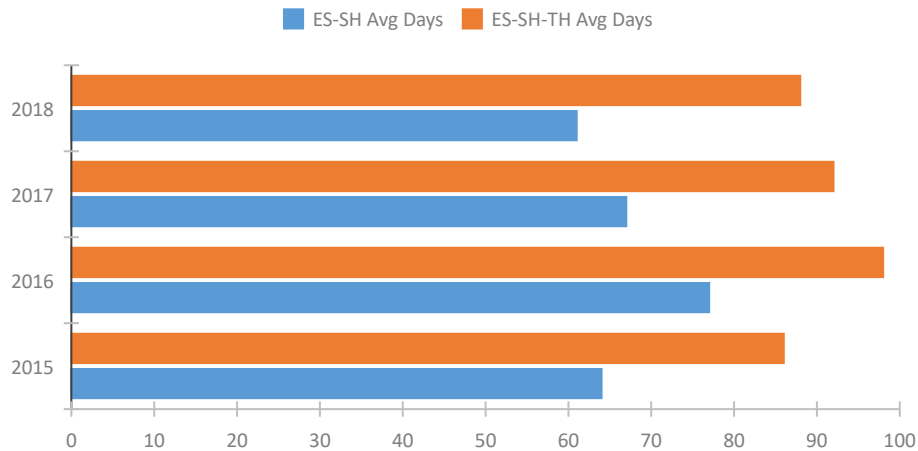


Homeless Population – Point-in-Time (PIT) Count

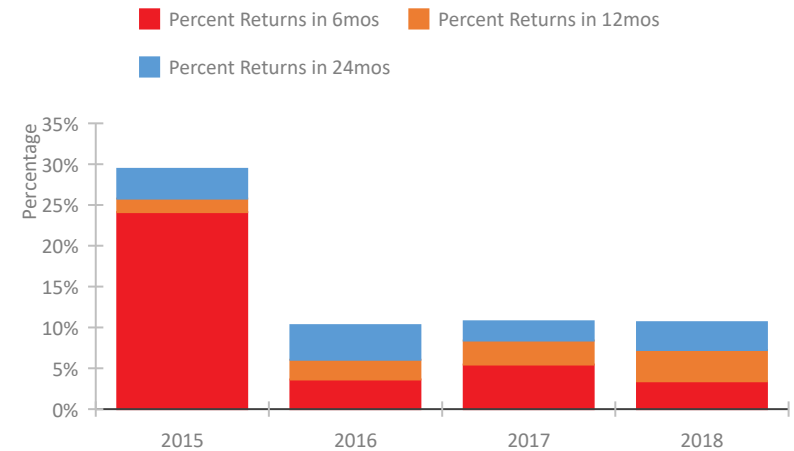


CoC Performance Profile VA-505 Newport News, Hampton/Virginia Peninsula CoC

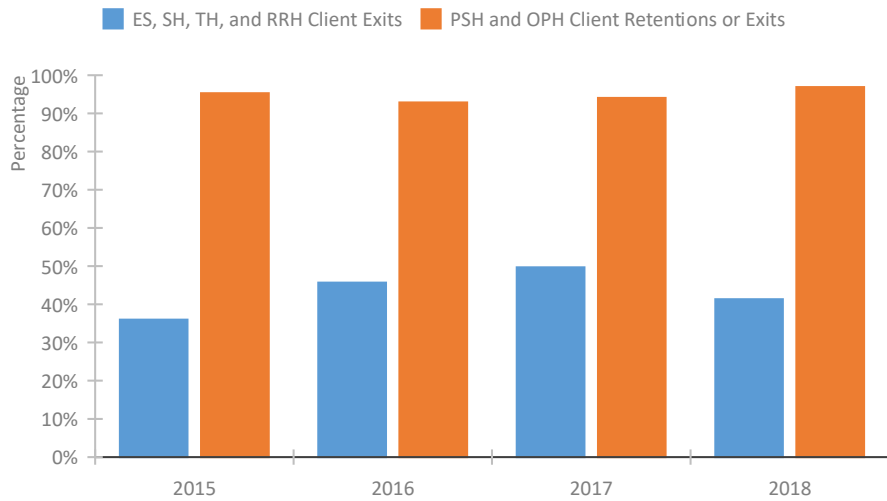
Length of Time Homeless



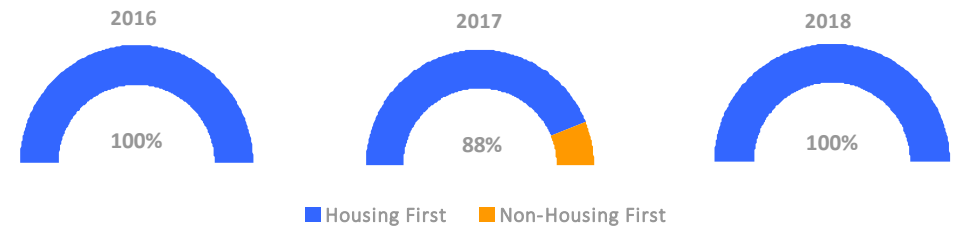
Returns to Homelessness Over Time



Exits to Permanent Housing by Program Type



Proportion of Housing First Projects by Year



Number of Projects by Year

	2016	2017	2018
Housing First Projects	9	7	10
Non-Housing First Projects	0	1	0

Data Summary: VA-505 Newport News, Hampton/Virginia Peninsula CoC

Point-In-Time Count Summary

	2014	2015	2016	2017	2018	2017-18 Change	% Change
Number of Sheltered Persons in Families	184	164	145	160	123	-37	-23%
Number of Unsheltered Persons in Families	0	5	0	0	0	0	--
Number of Sheltered Individuals	313	286	262	272	246	-26	-10%
Number of Unsheltered Individuals	28	65	57	80	70	-10	-12%
Total Homeless Persons	525	520	464	512	439	-73	-14%
Number of Sheltered Families	60	48	48	45	41	-4	-9%
Number of Unsheltered Families	0	1	0	0	0	0	--
Number of Total Families	60	49	48	45	41	-4	-9%
Sheltered Chronically Homeless Individuals	105	24	35	47	42	-5	-11%
Unsheltered Chronically Homeless Individuals	18	23	18	25	13	-12	-48%
Total Chronically Homeless Individuals	123	47	53	72	55	-17	-24%
Sheltered Veterans	72	91	58	60	52	-8	-13%
Unsheltered Veterans	7	5	7	8	6	-2	-25%
Total Veterans	79	96	65	68	58	-10	-15%
Sheltered Unaccompanied Youth (up to 24)	--	14	13	14	18	4	29%
Unsheltered Unaccompanied Youth (up to 24)	--	3	1	4	4	0	0%
Total Unaccompanied Youth (up to 24)	--	17	14	18	22	4	22%

System Performance Measures Summary

	2014	2015	2016	2017	2018	2017-18 Change	% Change
Average Length of Time Homeless (days)	N/A	86	98	92	88	-4	-4.3%
Rate People Return to Homelessness in 6 Months	N/A	24.1%	3.6%	5.4%	3.4%	-2%	N/A
Number of People who are Homeless for the First Time	N/A	1394	1267	1148	937	-211	-18.4%
Rate People Exit from ES, SH, TH, and RRH to PH	N/A	36.0%	45.7%	49.7%	41.4%	-8.4%	N/A
Rate People in PSH and OPH Retain or Exit to PH	N/A	95.3%	92.9%	94.1%	96.9%	2.8%	N/A

Housing Inventory Count Summary

	2014	2015	2016	2017	2018	2017-18 Change	% Change
Emergency Shelter (ES)	309	256	254	262	250	-12	-5%
Transitional Housing (TH)	124	133	111	103	113	10	10%
Permanent Supportive Housing (PSH)	436	848	669	754	850	96	13%
Rapid Re-Housing (RRH)	86	132	244	250	267	17	7%
Other Permanent Housing (OPH)	88	88	138	133	88	-45	-34%

Award Summary

	2014	2015	2016	2017	2018	2017-18 Change	% Change
Continuum of Care (CoC)	\$1,915,780	\$2,015,935	\$2,017,216	\$2,014,492	\$2,014,410	(\$82)	0%
ESG (VA state recipient - no direct funding)	\$2,526,777	\$2,752,294	\$2,754,274	\$2,902,037	\$2,771,457	(\$130,580)	-4%