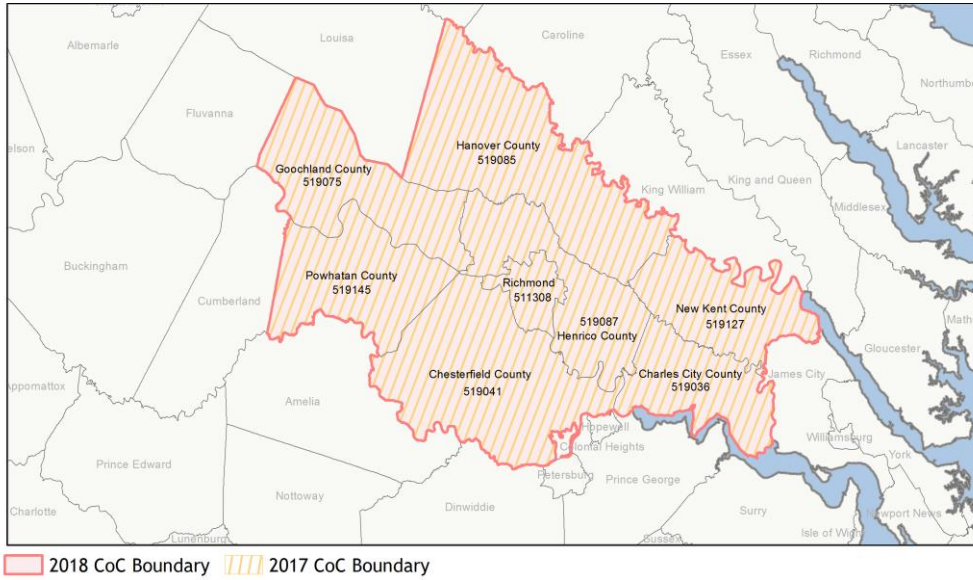
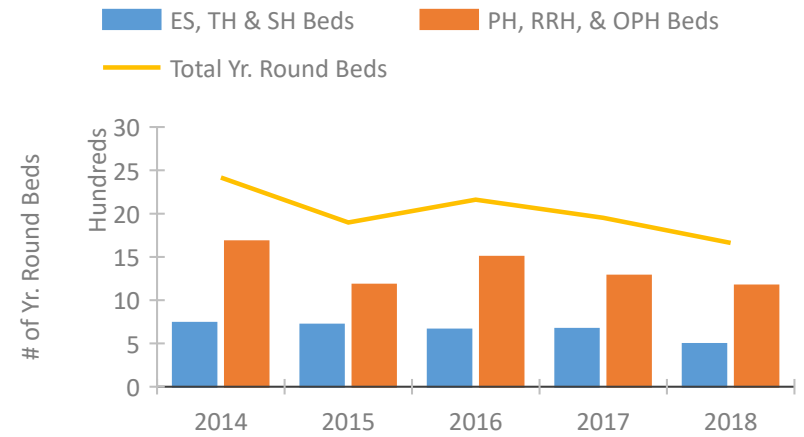


CoC Performance Profile VA-500

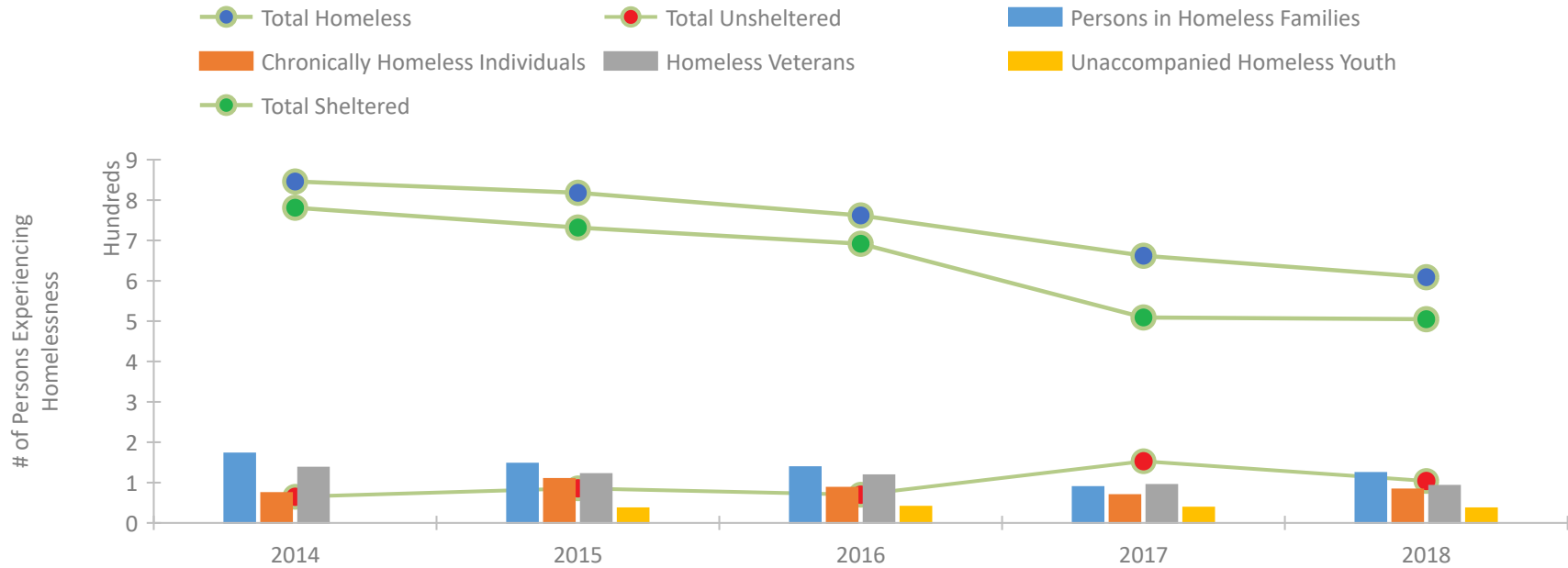
Richmond/Henrico, Chesterfield, Hanover Counties CoC



Housing Inventory Count by Program Type



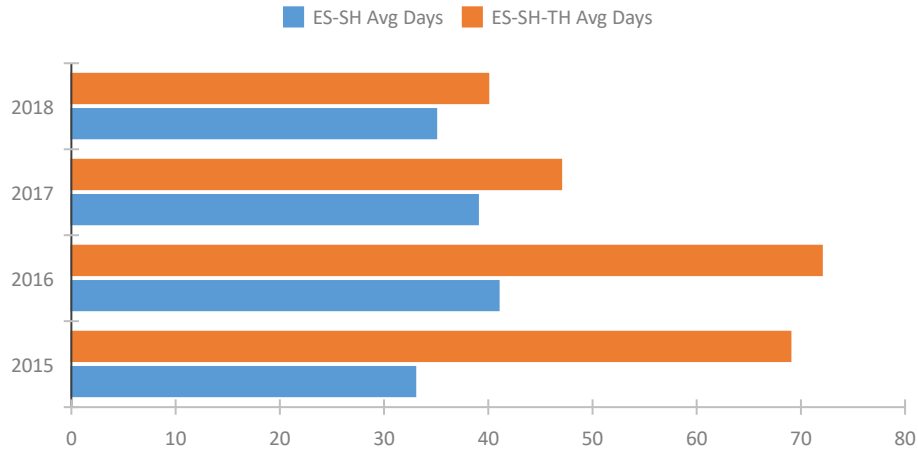
Homeless Population – Point-in-Time (PIT) Count



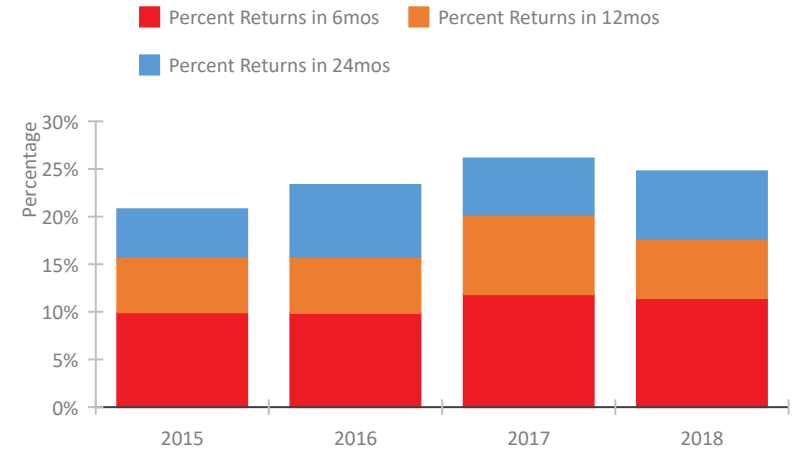
CoC Performance Profile VA-500

Richmond/Henrico, Chesterfield, Hanover Counties CoC

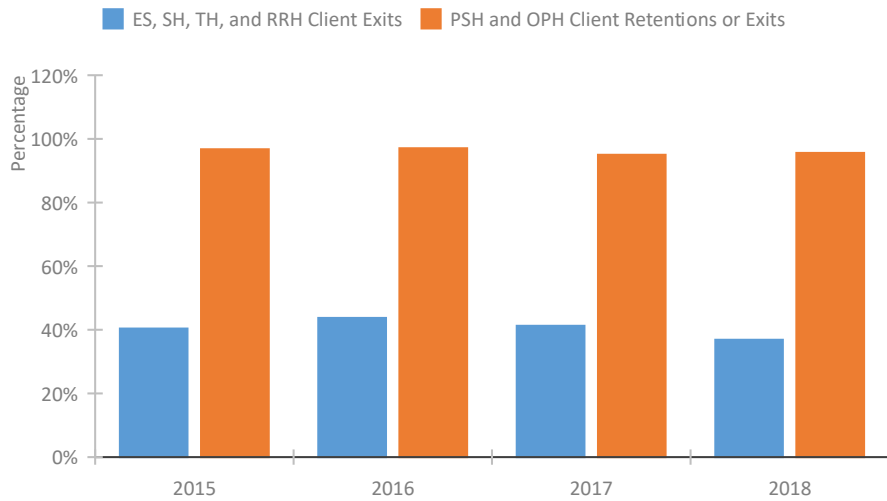
Length of Time Homeless



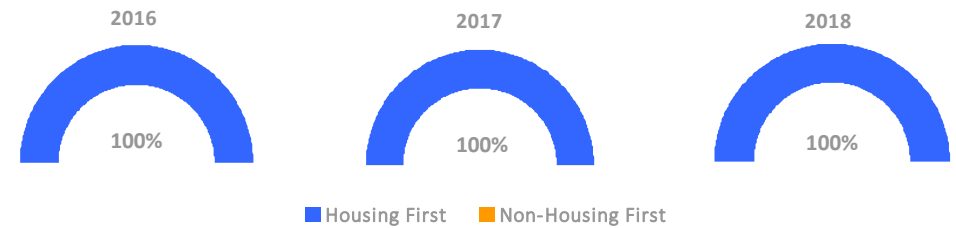
Returns to Homelessness Over Time



Exits to Permanent Housing by Program Type



Proportion of Housing First Projects by Year



Number of Projects by Year

	2016	2017	2018
Housing First Projects	11	13	13
Non-Housing First Projects	0	0	0

Data Summary: VA-500 Richmond/Henrico, Chesterfield, Hanover Counties CoC

Point-In-Time Count Summary

	2014	2015	2016	2017	2018	2017-18 Change	% Change
Number of Sheltered Persons in Families	172	147	138	89	124	35	39%
Number of Unsheltered Persons in Families	0	0	0	0	0	0	--
Number of Sheltered Individuals	609	585	554	420	381	-39	-9%
Number of Unsheltered Individuals	65	86	70	153	104	-49	-32%
Total Homeless Persons	846	818	762	662	609	-53	-8%
Number of Sheltered Families	63	55	44	29	49	20	69%
Number of Unsheltered Families	0	0	0	0	0	0	--
Number of Total Families	63	55	44	29	49	20	69%
Sheltered Chronically Homeless Individuals	54	86	74	28	61	33	118%
Unsheltered Chronically Homeless Individuals	20	23	13	41	22	-19	-46%
Total Chronically Homeless Individuals	74	109	87	69	83	14	20%
Sheltered Veterans	122	115	105	77	82	5	6%
Unsheltered Veterans	15	6	13	17	10	-7	-41%
Total Veterans	137	121	118	94	92	-2	-2%
Sheltered Unaccompanied Youth (up to 24)	--	31	36	34	28	-6	-18%
Unsheltered Unaccompanied Youth (up to 24)	--	5	4	4	8	4	100%
Total Unaccompanied Youth (up to 24)	--	36	40	38	36	-2	-5%

System Performance Measures Summary

	2014	2015	2016	2017	2018	2017-18 Change	% Change
Average Length of Time Homeless (days)	N/A	69	72	47	40	-7	-14.9%
Rate People Return to Homelessness in 6 Months	N/A	9.9%	9.9%	11.9%	11.5%	-0.4%	N/A
Number of People who are Homeless for the First Time	N/A	2293	2586	2160	2255	95	4.4%
Rate People Exit from ES, SH, TH, and RRH to PH	N/A	40.4%	43.7%	41.3%	36.9%	-4.4%	N/A
Rate People in PSH and OPH Retain or Exit to PH	N/A	96.7%	97.0%	95.0%	95.6%	0.6%	N/A

Housing Inventory Count Summary

	2014	2015	2016	2017	2018	2017-18 Change	% Change
Emergency Shelter (ES)	302	334	348	354	362	8	2%
Safe Haven (SH)	16	16	16	16	28	12	75%
Transitional Housing (TH)	419	368	296	298	103	-195	-65%
Permanent Supportive Housing (PSH)	914	823	1,047	680	734	54	8%
Rapid Re-Housing (RRH)	766	356	454	472	303	-169	-36%
Other Permanent Housing (OPH)	--	--	--	132	132	0	0%

Award Summary

	2014	2015	2016	2017	2018	2017-18 Change	% Change
Continuum of Care (CoC)	\$4,413,731	\$4,468,766	\$4,346,322	\$4,637,254	\$4,754,160	\$116,906	3%
Emergency Solutions Grants (ESG)	\$473,364	\$513,846	\$517,353	\$506,083	\$505,354	(\$729)	0%