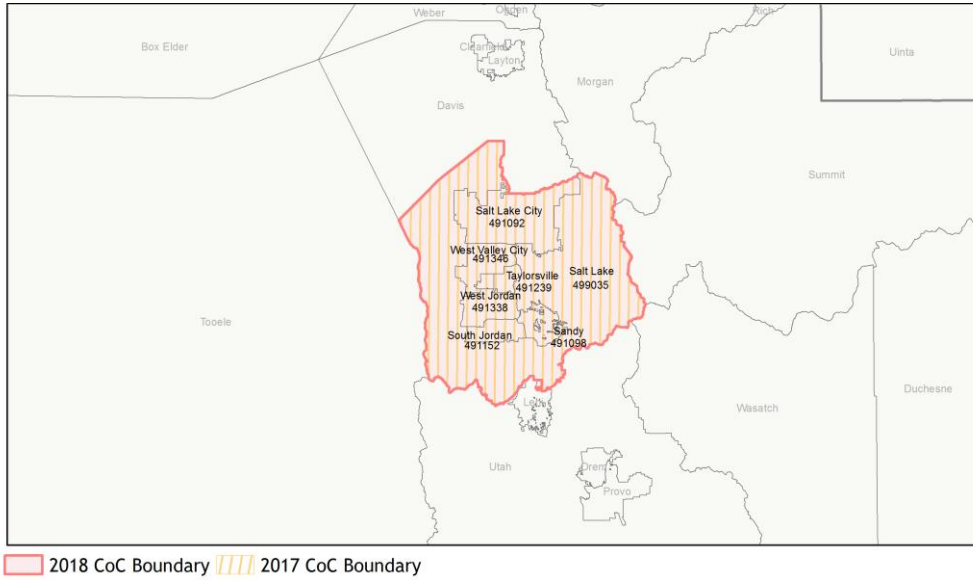
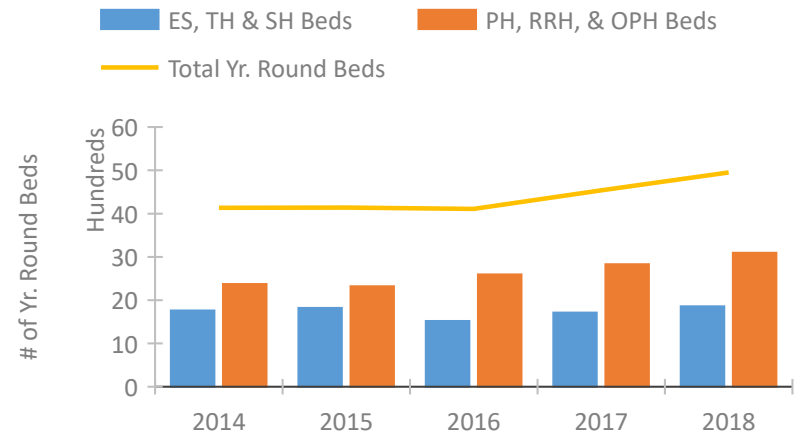


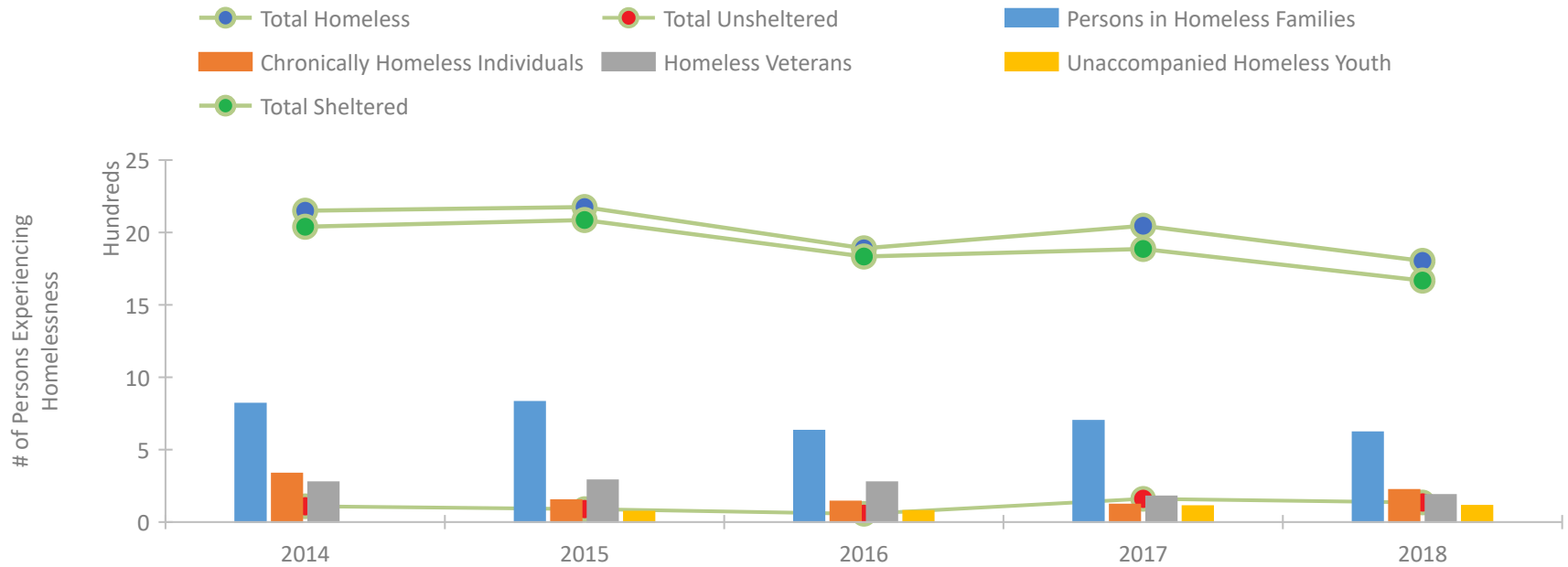
## CoC Performance Profile UT-500 Salt Lake City & County CoC



### Housing Inventory Count by Program Type

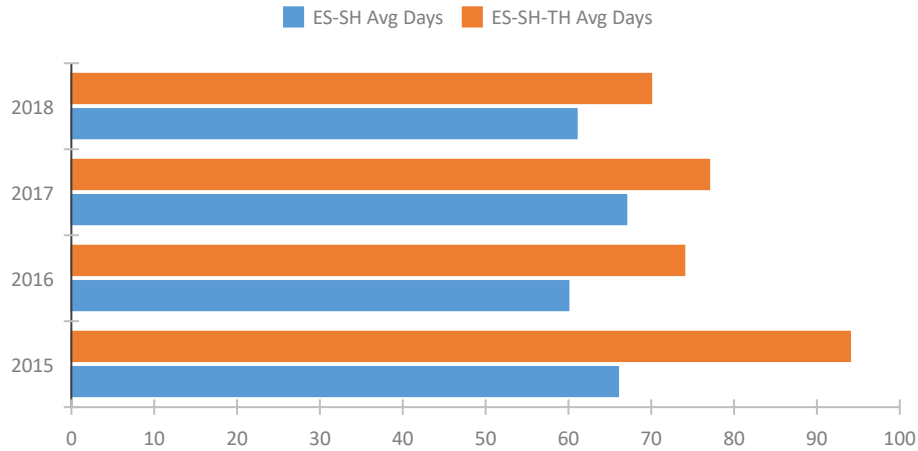


### Homeless Population – Point-in-Time (PIT) Count

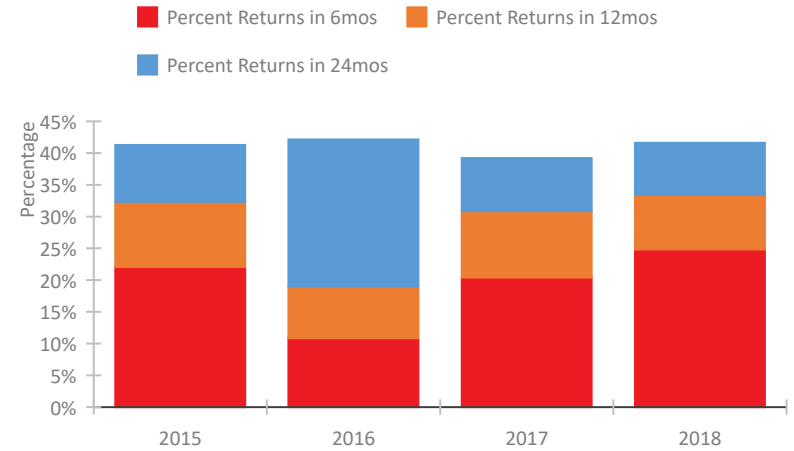


## CoC Performance Profile UT-500 Salt Lake City & County CoC

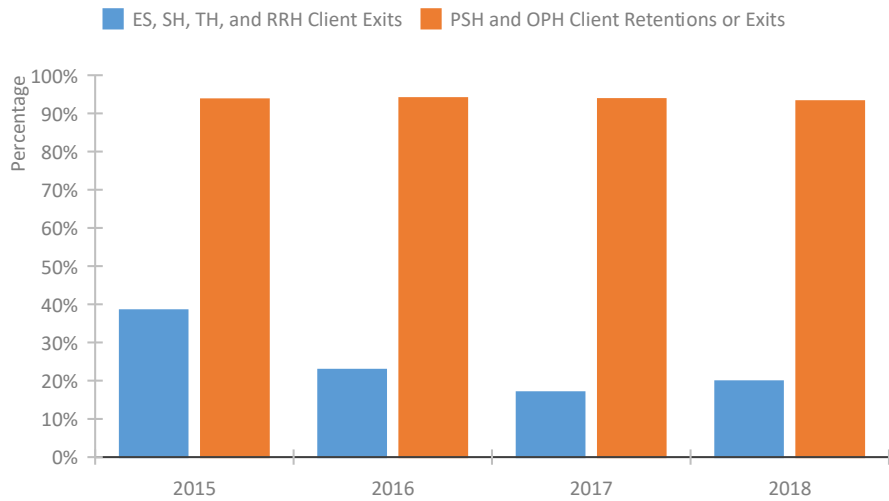
### Length of Time Homeless



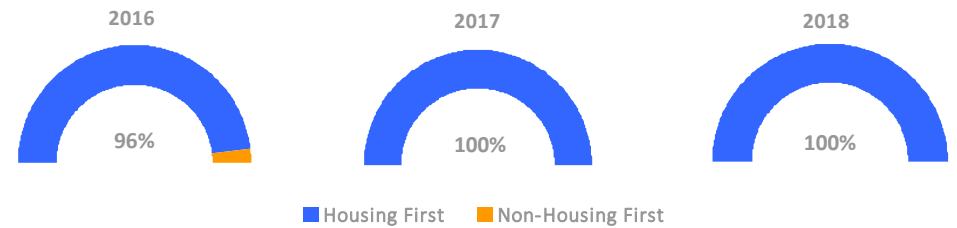
### Returns to Homelessness Over Time



### Exits to Permanent Housing by Program Type



### Proportion of Housing First Projects by Year



#### Number of Projects by Year

	2016	2017	2018
Housing First Projects	24	25	25
Non-Housing First Projects	1	0	0

## Data Summary: UT-500 Salt Lake City & County CoC

### Point-In-Time Count Summary

	2014	2015	2016	2017	2018	2017-18 Change	% Change
Number of Sheltered Persons in Families	813	824	631	699	620	-79	-11%
Number of Unsheltered Persons in Families	5	6	0	0	0	0	--
Number of Sheltered Individuals	1,227	1,262	1,203	1,187	1,048	-139	-12%
Number of Unsheltered Individuals	105	84	57	161	136	-25	-16%
<b>Total Homeless Persons</b>	<b>2,150</b>	<b>2,176</b>	<b>1,891</b>	<b>2,047</b>	<b>1,804</b>	<b>-243</b>	<b>-12%</b>
Number of Sheltered Families	249	241	188	198	177	-21	-11%
Number of Unsheltered Families	1	2	0	0	0	0	--
<b>Number of Total Families</b>	<b>250</b>	<b>243</b>	<b>188</b>	<b>198</b>	<b>177</b>	<b>-21</b>	<b>-11%</b>
Sheltered Chronically Homeless Individuals	310	143	139	90	178	88	98%
Unsheltered Chronically Homeless Individuals	25	8	3	31	44	13	42%
<b>Total Chronically Homeless Individuals</b>	<b>335</b>	<b>151</b>	<b>142</b>	<b>121</b>	<b>222</b>	<b>101</b>	<b>83%</b>
Sheltered Veterans	260	278	268	170	180	10	6%
Unsheltered Veterans	15	10	7	7	7	0	0%
<b>Total Veterans</b>	<b>275</b>	<b>288</b>	<b>275</b>	<b>177</b>	<b>187</b>	<b>10</b>	<b>6%</b>
Sheltered Unaccompanied Youth (up to 24)	--	64	76	88	103	15	17%
Unsheltered Unaccompanied Youth (up to 24)	--	8	1	22	9	-13	-59%
<b>Total Unaccompanied Youth (up to 24)</b>	<b>--</b>	<b>72</b>	<b>77</b>	<b>110</b>	<b>112</b>	<b>2</b>	<b>2%</b>

### System Performance Measures Summary

	2014	2015	2016	2017	2018	2017-18 Change	% Change
Average Length of Time Homeless (days)	N/A	94	74	77	70	-7	-9.1%
Rate People Return to Homelessness in 6 Months	N/A	22.1%	10.8%	20.4%	24.8%	4.4%	N/A
Number of People who are Homeless for the First Time	N/A	5042	5899	5457	5710	253	4.6%
Rate People Exit from ES, SH, TH, and RRH to PH	N/A	38.4%	22.9%	17.0%	19.9%	2.9%	N/A
Rate People in PSH and OPH Retain or Exit to PH	N/A	93.7%	94.0%	93.7%	93.2%	-0.6%	N/A

### Housing Inventory Count Summary

	2014	2015	2016	2017	2018	2017-18 Change	% Change
Emergency Shelter (ES)	969	1,047	1,079	1,415	1,493	78	6%
Transitional Housing (TH)	743	749	438	296	365	69	23%
Permanent Supportive Housing (PSH)	1,868	1,987	1,939	2,082	2,124	42	2%
Rapid Re-Housing (RRH)	505	334	655	623	847	224	36%
Other Permanent Housing (OPH)	--	--	--	123	123	0	0%

### Award Summary

	2014	2015	2016	2017	2018	2017-18 Change	% Change
<b>Continuum of Care (CoC)</b>	\$6,028,627	\$7,389,067	\$7,291,633	\$7,358,531	\$7,887,527	\$528,996	7%
<b>Emergency Solutions Grants (ESG)</b>	\$456,197	\$493,106	\$497,510	\$499,871	\$503,149	\$3,278	1%