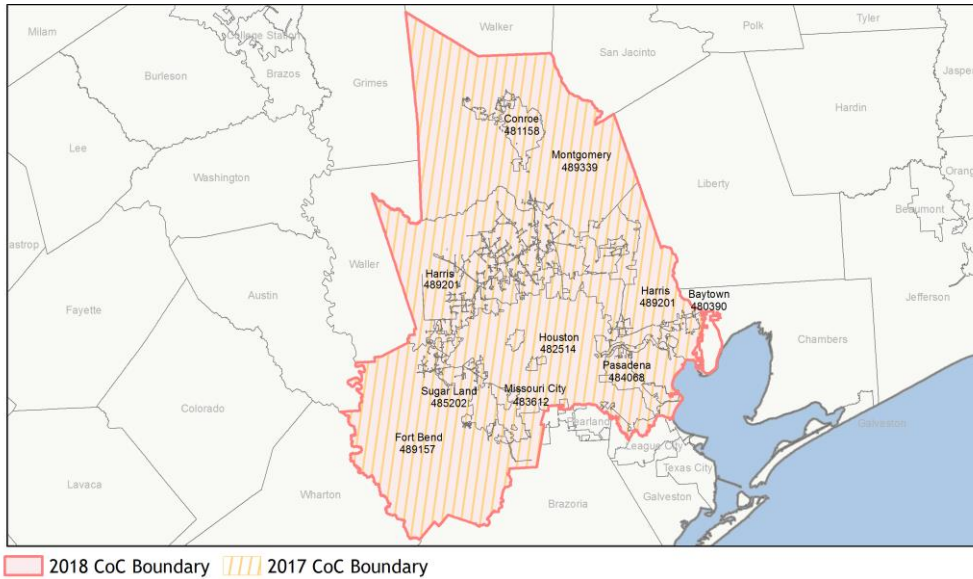
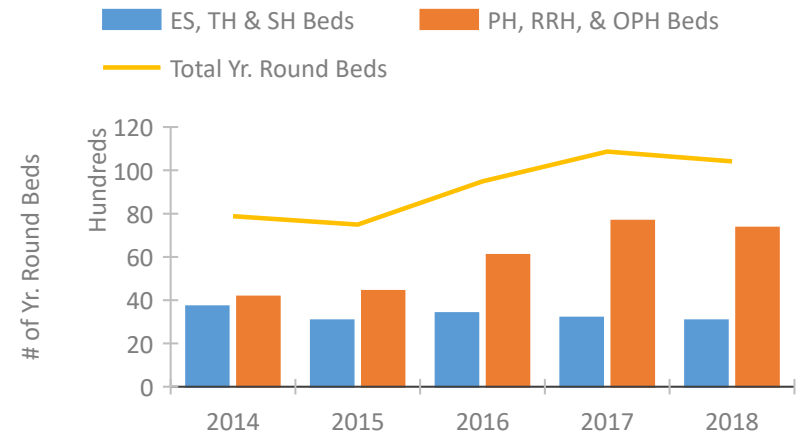


CoC Performance Profile TX-700

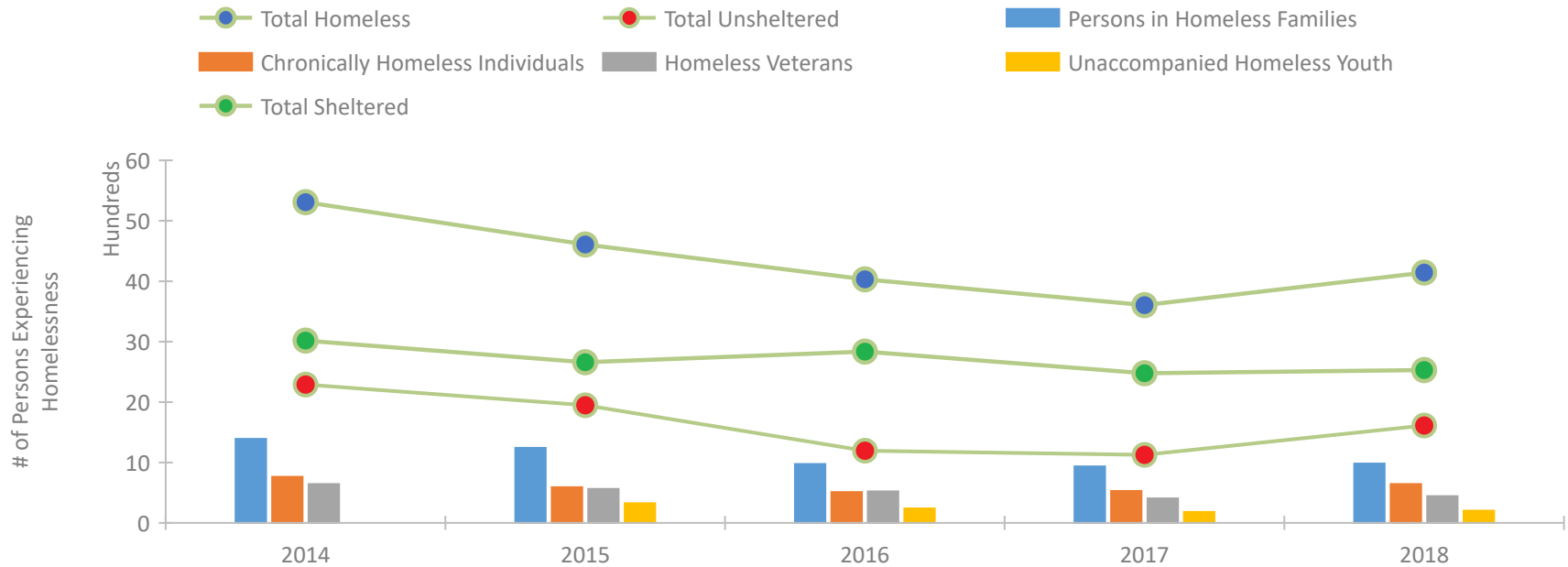
Houston, Pasadena, Conroe/Harris, Fort Bend, Montgomery Counties CoC



Housing Inventory Count by Program Type



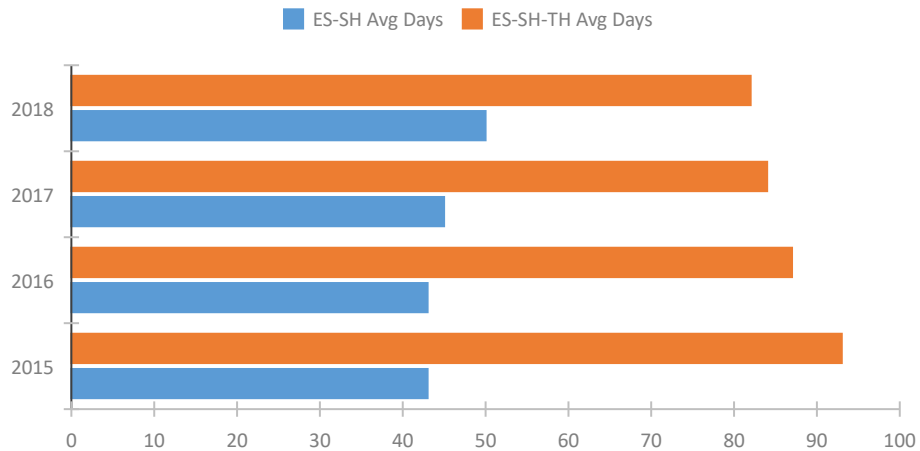
Homeless Population – Point-in-Time (PIT) Count



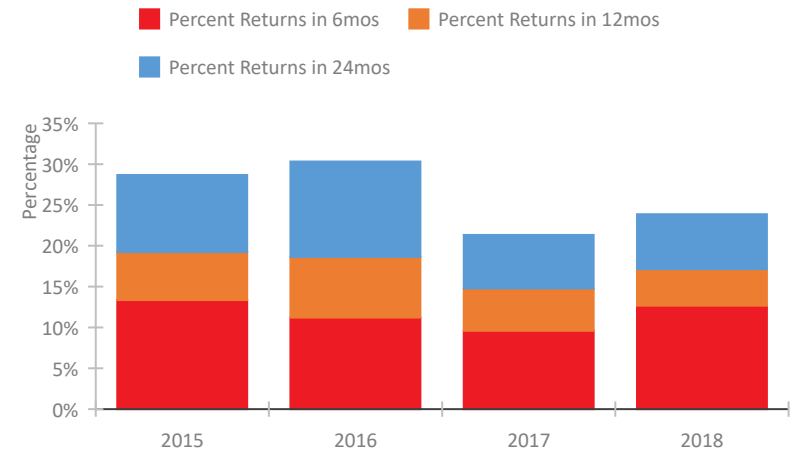
CoC Performance Profile TX-700

Houston, Pasadena, Conroe/Harris, Fort Bend, Montgomery Counties CoC

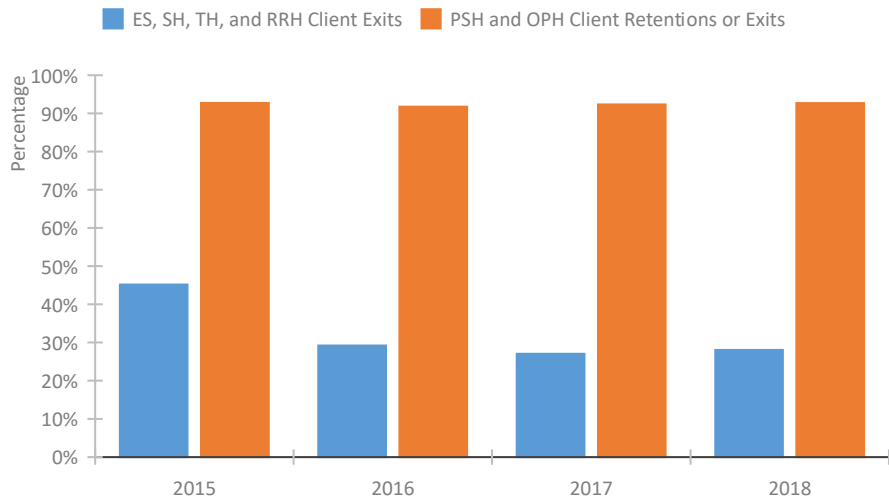
Length of Time Homeless



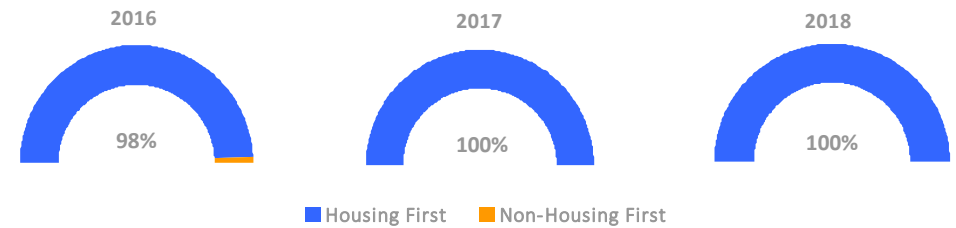
Returns to Homelessness Over Time



Exits to Permanent Housing by Program Type



Proportion of Housing First Projects by Year



Number of Projects by Year

	2016	2017	2018
Housing First Projects	53	52	54
Non-Housing First Projects	1	0	0

Data Summary: TX-700 Houston, Pasadena, Conroe/Harris, Fort Bend, Montgomery Counties CoC

Point-In-Time Count Summary

	2014	2015	2016	2017	2018	2017-18 Change	% Change
Number of Sheltered Persons in Families	1,390	1,229	966	915	981	66	7%
Number of Unsheltered Persons in Families	0	14	10	20	0	-20	-100%
Number of Sheltered Individuals	1,627	1,430	1,869	1,562	1,548	-14	-1%
Number of Unsheltered Individuals	2,291	1,936	1,186	1,108	1,614	506	46%
Total Homeless Persons	5,308	4,609	4,031	3,605	4,143	538	15%
Number of Sheltered Families	427	383	323	310	340	30	10%
Number of Unsheltered Families	0	7	3	9	0	-9	-100%
Number of Total Families	427	390	326	319	340	21	7%
Sheltered Chronically Homeless Individuals	117	48	127	247	208	-39	-16%
Unsheltered Chronically Homeless Individuals	646	543	384	282	436	154	55%
Total Chronically Homeless Individuals	763	591	511	529	644	115	22%
Sheltered Veterans	310	339	376	315	225	-90	-29%
Unsheltered Veterans	334	224	147	90	218	128	142%
Total Veterans	644	563	523	405	443	38	9%
Sheltered Unaccompanied Youth (up to 24)	--	148	162	118	132	14	12%
Unsheltered Unaccompanied Youth (up to 24)	--	177	77	65	70	5	8%
Total Unaccompanied Youth (up to 24)	--	325	239	183	202	19	10%

System Performance Measures Summary

	2014	2015	2016	2017	2018	2017-18 Change	% Change
Average Length of Time Homeless (days)	N/A	93	87	84	82	-2	-2.4%
Rate People Return to Homelessness in 6 Months	N/A	13.3%	11.2%	9.6%	12.7%	3.1%	N/A
Number of People who are Homeless for the First Time	N/A	11818	11049	10416	10894	478	4.6%
Rate People Exit from ES, SH, TH, and RRH to PH	N/A	45.2%	29.2%	27.1%	28.1%	1%	N/A
Rate People in PSH and OPH Retain or Exit to PH	N/A	92.7%	91.7%	92.3%	92.7%	0.4%	N/A

Housing Inventory Count Summary

	2014	2015	2016	2017	2018	2017-18 Change	% Change
Emergency Shelter (ES)	1,142	1,169	1,613	1,758	1,902	144	8%
Safe Haven (SH)	25	--	--	--	32	--	--
Transitional Housing (TH)	2,548	1,898	1,788	1,434	1,130	-304	-21%
Permanent Supportive Housing (PSH)	3,676	3,772	4,818	5,542	5,848	306	6%
Rapid Re-Housing (RRH)	488	655	1,270	1,821	1,477	-344	-19%
Other Permanent Housing (OPH)	--	--	--	310	27	-283	-91%

Award Summary

	2014	2015	2016	2017	2018	2017-18 Change	% Change
Continuum of Care (CoC)	\$23,037,803	\$32,098,014	\$33,233,058	\$33,425,255	\$38,155,969	\$4,730,714	14%
Emergency Solutions Grants (ESG)	\$3,189,701	\$3,615,312	\$3,625,510	\$3,652,697	\$3,646,143	(\$6,554)	0%