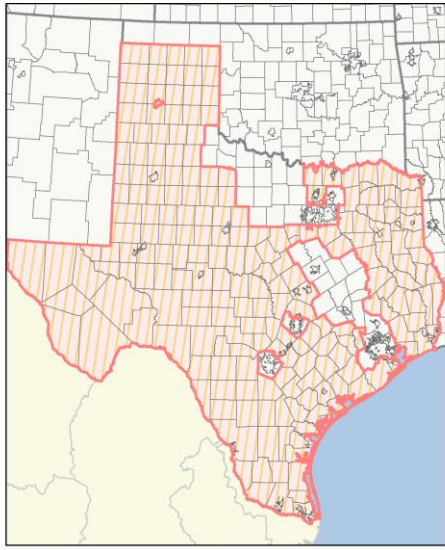
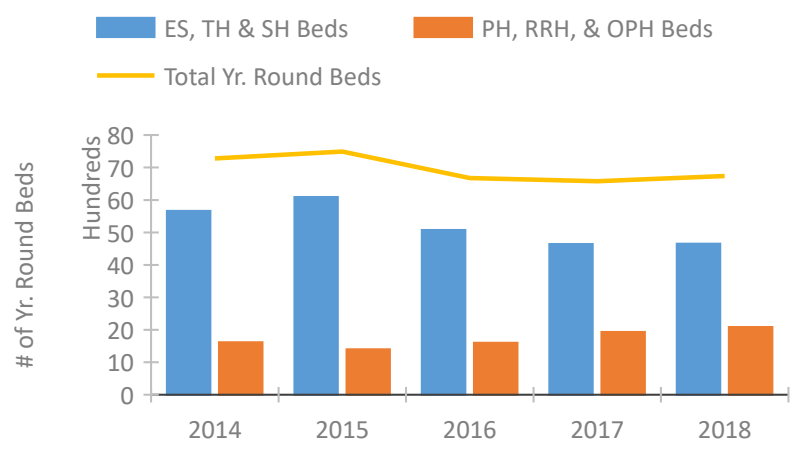


CoC Performance Profile TX-607 Texas Balance of State CoC

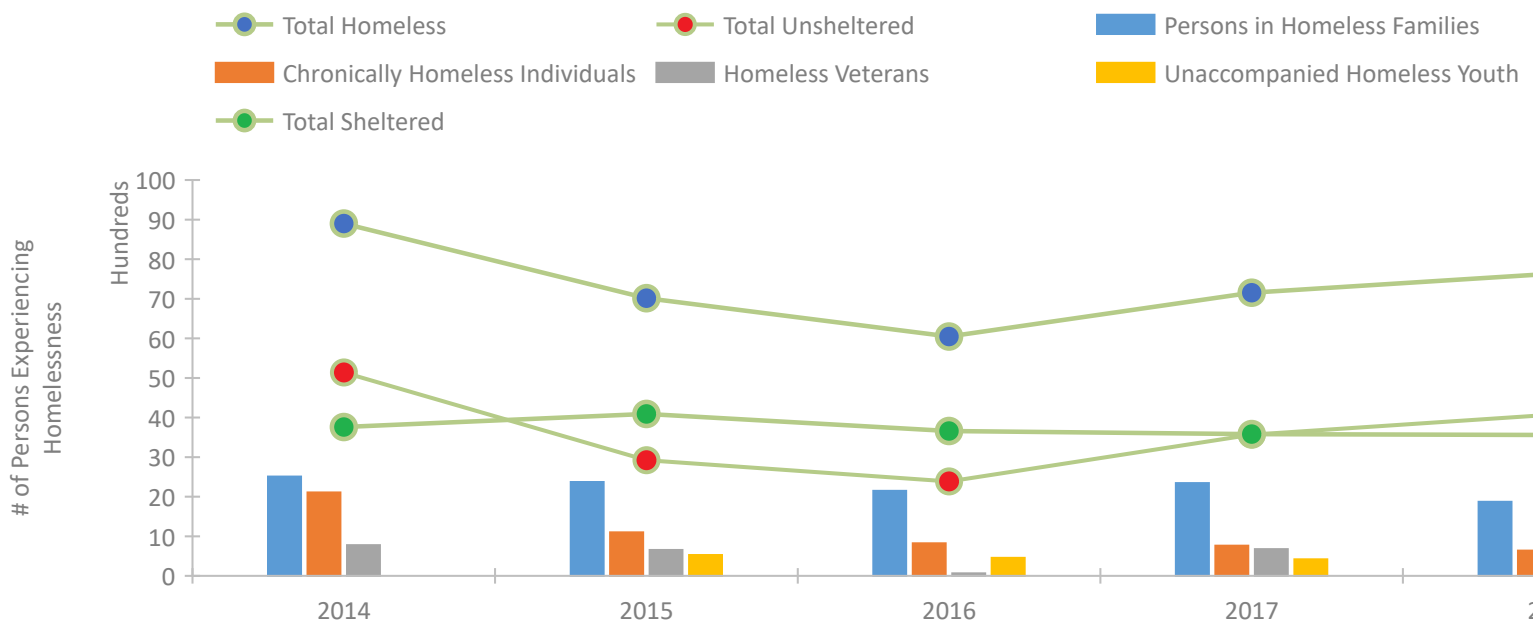


Geocode	Name	Geocode	Name	Geocode	Name	Geocode	Name	Geocode	Name
480018	Adkins	480126	Denton	480127	Del Rio	480127	Del Rio	480423	Nacogdoches
480019	Adkins	480127	Dumas	480128	Del Rio	480128	Del Rio	480424	Nacogdoches
480020	Adkins	480128	Dumas	480129	Del Rio	480129	Del Rio	480425	Nacogdoches
480021	Adkins	480129	Dumas	480130	Del Rio	480130	Del Rio	480426	Nacogdoches
480022	Adkins	480130	Dumas	480131	Del Rio	480131	Del Rio	480427	Nacogdoches
480023	Adkins	480131	Dumas	480132	Del Rio	480132	Del Rio	480428	Nacogdoches
480024	Adkins	480132	Dumas	480133	Del Rio	480133	Del Rio	480429	Nacogdoches
480025	Adkins	480133	Dumas	480134	Del Rio	480134	Del Rio	480430	Nacogdoches
480026	Adkins	480134	Dumas	480135	Del Rio	480135	Del Rio	480431	Nacogdoches
480027	Adkins	480135	Dumas	480136	Del Rio	480136	Del Rio	480432	Nacogdoches
480028	Adkins	480136	Dumas	480137	Del Rio	480137	Del Rio	480433	Nacogdoches
480029	Adkins	480137	Dumas	480138	Del Rio	480138	Del Rio	480434	Nacogdoches
480030	Adkins	480138	Dumas	480139	Del Rio	480139	Del Rio	480435	Nacogdoches
480031	Adkins	480139	Dumas	480140	Del Rio	480140	Del Rio	480436	Nacogdoches
480032	Adkins	480140	Dumas	480141	Del Rio	480141	Del Rio	480437	Nacogdoches
480033	Adkins	480141	Dumas	480142	Del Rio	480142	Del Rio	480438	Nacogdoches
480034	Adkins	480142	Dumas	480143	Del Rio	480143	Del Rio	480439	Nacogdoches
480035	Adkins	480143	Dumas	480144	Del Rio	480144	Del Rio	480440	Nacogdoches
480036	Adkins	480144	Dumas	480145	Del Rio	480145	Del Rio	480441	Nacogdoches
480037	Adkins	480145	Dumas	480146	Del Rio	480146	Del Rio	480442	Nacogdoches
480038	Adkins	480146	Dumas	480147	Del Rio	480147	Del Rio	480443	Nacogdoches
480039	Adkins	480147	Dumas	480148	Del Rio	480148	Del Rio	480444	Nacogdoches
480040	Adkins	480148	Dumas	480149	Del Rio	480149	Del Rio	480445	Nacogdoches
480041	Adkins	480149	Dumas	480150	Del Rio	480150	Del Rio	480446	Nacogdoches
480042	Adkins	480150	Dumas	480151	Del Rio	480151	Del Rio	480447	Nacogdoches
480043	Adkins	480151	Dumas	480152	Del Rio	480152	Del Rio	480448	Nacogdoches
480044	Adkins	480152	Dumas	480153	Del Rio	480153	Del Rio	480449	Nacogdoches
480045	Adkins	480153	Dumas	480154	Del Rio	480154	Del Rio	480450	Nacogdoches
480046	Adkins	480154	Dumas	480155	Del Rio	480155	Del Rio	480451	Nacogdoches
480047	Adkins	480155	Dumas	480156	Del Rio	480156	Del Rio	480452	Nacogdoches
480048	Adkins	480156	Dumas	480157	Del Rio	480157	Del Rio	480453	Nacogdoches
480049	Adkins	480157	Dumas	480158	Del Rio	480158	Del Rio	480454	Nacogdoches
480050	Adkins	480158	Dumas	480159	Del Rio	480159	Del Rio	480455	Nacogdoches
480051	Adkins	480159	Dumas	480160	Del Rio	480160	Del Rio	480456	Nacogdoches
480052	Adkins	480160	Dumas	480161	Del Rio	480161	Del Rio	480457	Nacogdoches
480053	Adkins	480161	Dumas	480162	Del Rio	480162	Del Rio	480458	Nacogdoches
480054	Adkins	480162	Dumas	480163	Del Rio	480163	Del Rio	480459	Nacogdoches
480055	Adkins	480163	Dumas	480164	Del Rio	480164	Del Rio	480460	Nacogdoches
480056	Adkins	480164	Dumas	480165	Del Rio	480165	Del Rio	480461	Nacogdoches
480057	Adkins	480165	Dumas	480166	Del Rio	480166	Del Rio	480462	Nacogdoches
480058	Adkins	480166	Dumas	480167	Del Rio	480167	Del Rio	480463	Nacogdoches
480059	Adkins	480167	Dumas	480168	Del Rio	480168	Del Rio	480464	Nacogdoches
480060	Adkins	480168	Dumas	480169	Del Rio	480169	Del Rio	480465	Nacogdoches
480061	Adkins	480169	Dumas	480170	Del Rio	480170	Del Rio	480466	Nacogdoches
480062	Adkins	480170	Dumas	480171	Del Rio	480171	Del Rio	480467	Nacogdoches
480063	Adkins	480171	Dumas	480172	Del Rio	480172	Del Rio	480468	Nacogdoches
480064	Adkins	480172	Dumas	480173	Del Rio	480173	Del Rio	480469	Nacogdoches
480065	Adkins	480173	Dumas	480174	Del Rio	480174	Del Rio	480470	Nacogdoches
480066	Adkins	480174	Dumas	480175	Del Rio	480175	Del Rio	480471	Nacogdoches
480067	Adkins	480175	Dumas	480176	Del Rio	480176	Del Rio	480472	Nacogdoches
480068	Adkins	480176	Dumas	480177	Del Rio	480177	Del Rio	480473	Nacogdoches
480069	Adkins	480177	Dumas	480178	Del Rio	480178	Del Rio	480474	Nacogdoches
480070	Adkins	480178	Dumas	480179	Del Rio	480179	Del Rio	480475	Nacogdoches
480071	Adkins	480179	Dumas	480180	Del Rio	480180	Del Rio	480476	Nacogdoches
480072	Adkins	480180	Dumas	480181	Del Rio	480181	Del Rio	480477	Nacogdoches
480073	Adkins	480181	Dumas	480182	Del Rio	480182	Del Rio	480478	Nacogdoches
480074	Adkins	480182	Dumas	480183	Del Rio	480183	Del Rio	480479	Nacogdoches
480075	Adkins	480183	Dumas	480184	Del Rio	480184	Del Rio	480480	Nacogdoches
480076	Adkins	480184	Dumas	480185	Del Rio	480185	Del Rio	480481	Nacogdoches
480077	Adkins	480185	Dumas	480186	Del Rio	480186	Del Rio	480482	Nacogdoches
480078	Adkins	480186	Dumas	480187	Del Rio	480187	Del Rio	480483	Nacogdoches
480079	Adkins	480187	Dumas	480188	Del Rio	480188	Del Rio	480484	Nacogdoches
480080	Adkins	480188	Dumas	480189	Del Rio	480189	Del Rio	480485	Nacogdoches
480081	Adkins	480189	Dumas	480190	Del Rio	480190	Del Rio	480486	Nacogdoches
480082	Adkins	480190	Dumas	480191	Del Rio	480191	Del Rio	480487	Nacogdoches
480083	Adkins	480191	Dumas	480192	Del Rio	480192	Del Rio	480488	Nacogdoches
480084	Adkins	480192	Dumas	480193	Del Rio	480193	Del Rio	480489	Nacogdoches
480085	Adkins	480193	Dumas	480194	Del Rio	480194	Del Rio	480490	Nacogdoches
480086	Adkins	480194	Dumas	480195	Del Rio	480195	Del Rio	480491	Nacogdoches
480087	Adkins	480195	Dumas	480196	Del Rio	480196	Del Rio	480492	Nacogdoches
480088	Adkins	480196	Dumas	480197	Del Rio	480197	Del Rio	480493	Nacogdoches
480089	Adkins	480197	Dumas	480198	Del Rio	480198	Del Rio	480494	Nacogdoches
480090	Adkins	480198	Dumas	480199	Del Rio	480199	Del Rio	480495	Nacogdoches
480091	Adkins	480199	Dumas	480200	Del Rio	480200	Del Rio	480496	Nacogdoches
480092	Adkins	480200	Dumas						

Housing Inventory Count by Program Type

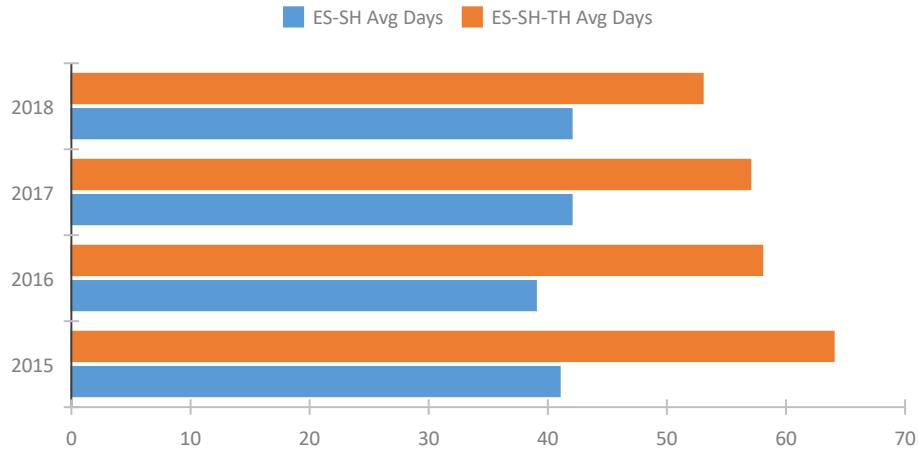


Homeless Population – Point-in-Time (PIT) Count

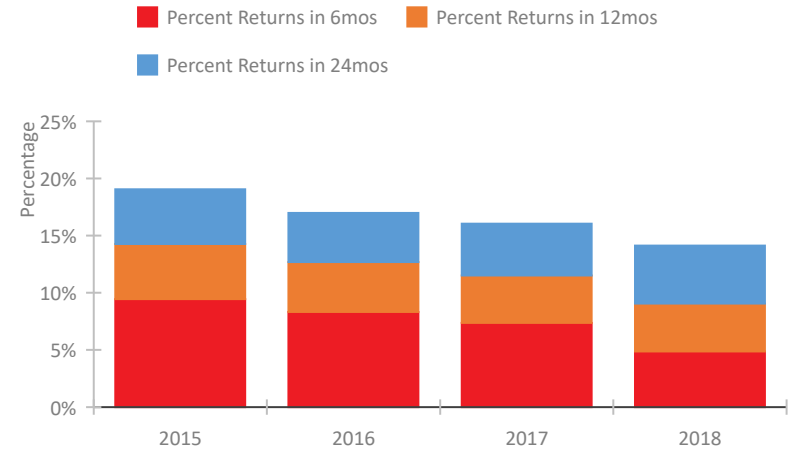


CoC Performance Profile TX-607 Texas Balance of State CoC

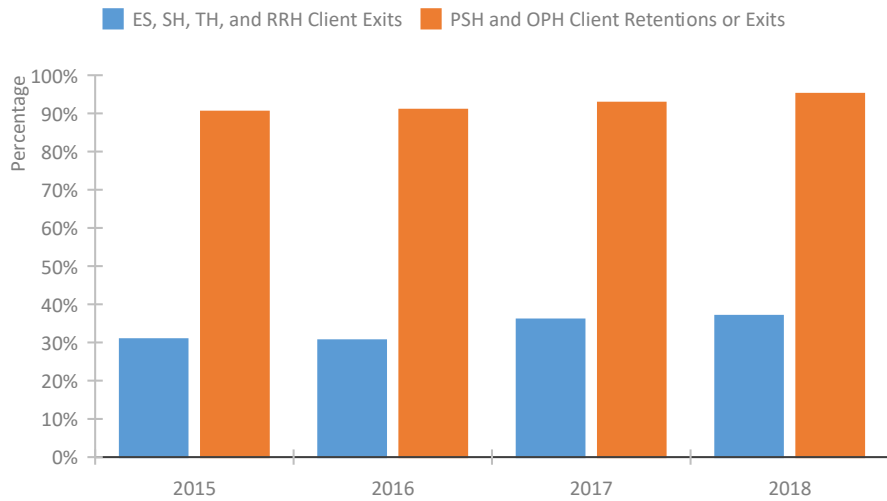
Length of Time Homeless



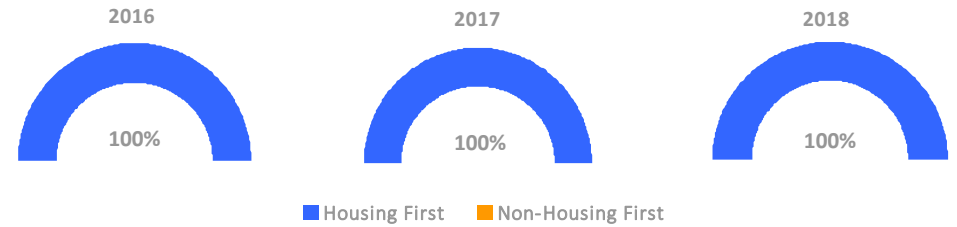
Returns to Homelessness Over Time



Exits to Permanent Housing by Program Type



Proportion of Housing First Projects by Year



Number of Projects by Year

	2016	2017	2018
Housing First Projects	25	23	21
Non-Housing First Projects	0	0	0

Data Summary: TX-607 Texas Balance of State CoC

Point-In-Time Count Summary

	2014	2015	2016	2017	2018	2017-18 Change	% Change
Number of Sheltered Persons in Families	1,761	1,979	1,977	1,918	1,671	-247	-13%
Number of Unsheltered Persons in Families	749	394	173	427	200	-227	-53%
Number of Sheltered Individuals	2,000	2,111	1,683	1,665	1,889	224	13%
Number of Unsheltered Individuals	4,393	2,532	2,215	3,143	3,878	735	23%
Total Homeless Persons	8,903	7,016	6,048	7,153	7,638	485	7%
Number of Sheltered Families	484	610	610	600	514	-86	-14%
Number of Unsheltered Families	206	137	55	154	52	-102	-66%
Number of Total Families	690	747	665	754	566	-188	-25%
Sheltered Chronically Homeless Individuals	423	318	316	167	129	-38	-23%
Unsheltered Chronically Homeless Individuals	1,685	781	507	597	509	-88	-15%
Total Chronically Homeless Individuals	2,108	1,099	823	764	638	-126	-16%
Sheltered Veterans	225	279	40	230	144	-86	-37%
Unsheltered Veterans	550	374	24	444	307	-137	-31%
Total Veterans	775	653	64	674	451	-223	-33%
Sheltered Unaccompanied Youth (up to 24)	--	281	192	172	160	-12	-7%
Unsheltered Unaccompanied Youth (up to 24)	--	245	265	245	283	38	16%
Total Unaccompanied Youth (up to 24)	--	526	457	417	443	26	6%

System Performance Measures Summary

	2014	2015	2016	2017	2018	2017-18 Change	% Change
Average Length of Time Homeless (days)	N/A	64	58	57	53	-4	-7%
Rate People Return to Homelessness in 6 Months	N/A	9.4%	8.3%	7.4%	4.9%	-2.5%	N/A
Number of People who are Homeless for the First Time	N/A	9740	7214	8715	10248	1,533	17.6%
Rate People Exit from ES, SH, TH, and RRH to PH	N/A	30.9%	30.6%	36.0%	37.0%	0.9%	N/A
Rate People in PSH and OPH Retain or Exit to PH	N/A	90.5%	90.9%	92.8%	95.1%	2.3%	N/A

Housing Inventory Count Summary

	2014	2015	2016	2017	2018	2017-18 Change	% Change
Emergency Shelter (ES)	4,014	4,490	3,760	3,395	3,682	287	8%
Transitional Housing (TH)	1,649	1,602	1,316	1,248	969	-279	-22%
Permanent Supportive Housing (PSH)	1,177	970	1,045	1,052	1,126	74	7%
Rapid Re-Housing (RRH)	440	430	554	883	960	77	9%

Award Summary

	2014	2015	2016	2017	2018	2017-18 Change	% Change
Continuum of Care (CoC)	\$6,902,560	\$7,686,653	\$6,499,737	\$6,927,605	\$7,342,787	\$415,182	6%
Emergency Solutions Grants (ESG)	\$1,844,674	\$1,772,890	\$1,739,951	\$1,723,065	\$1,711,032	(\$12,033)	-1%