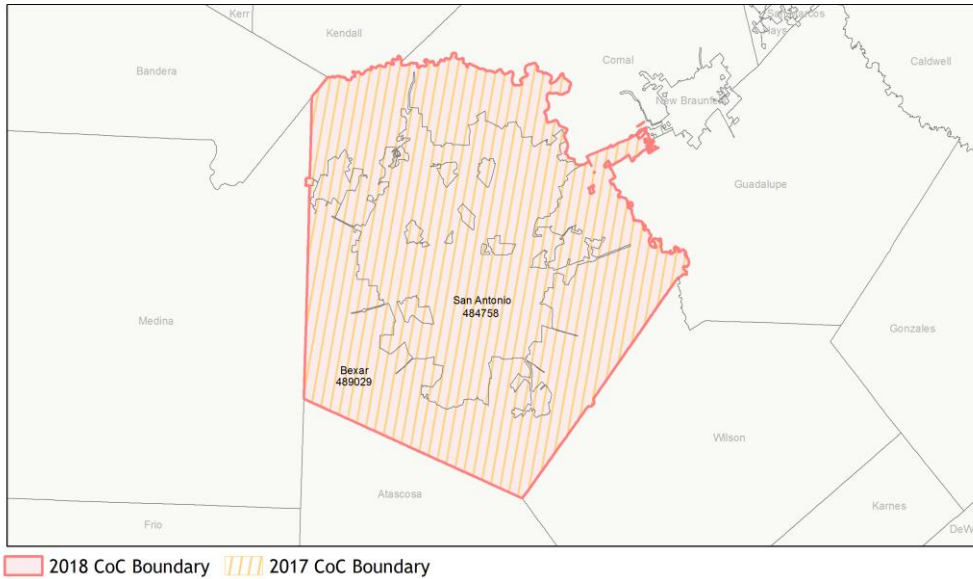
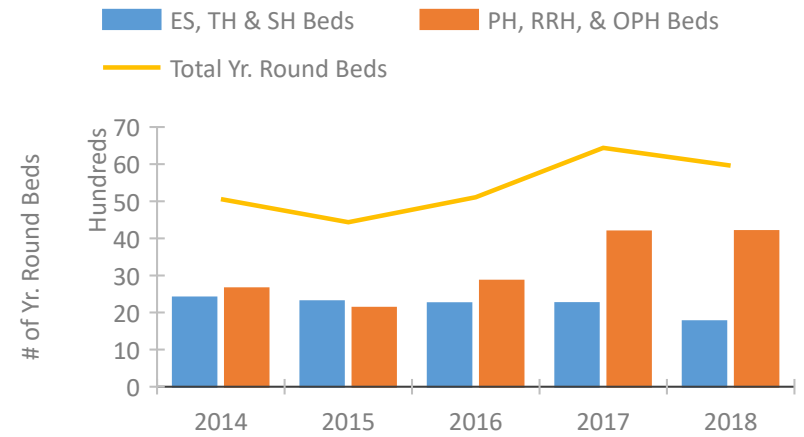


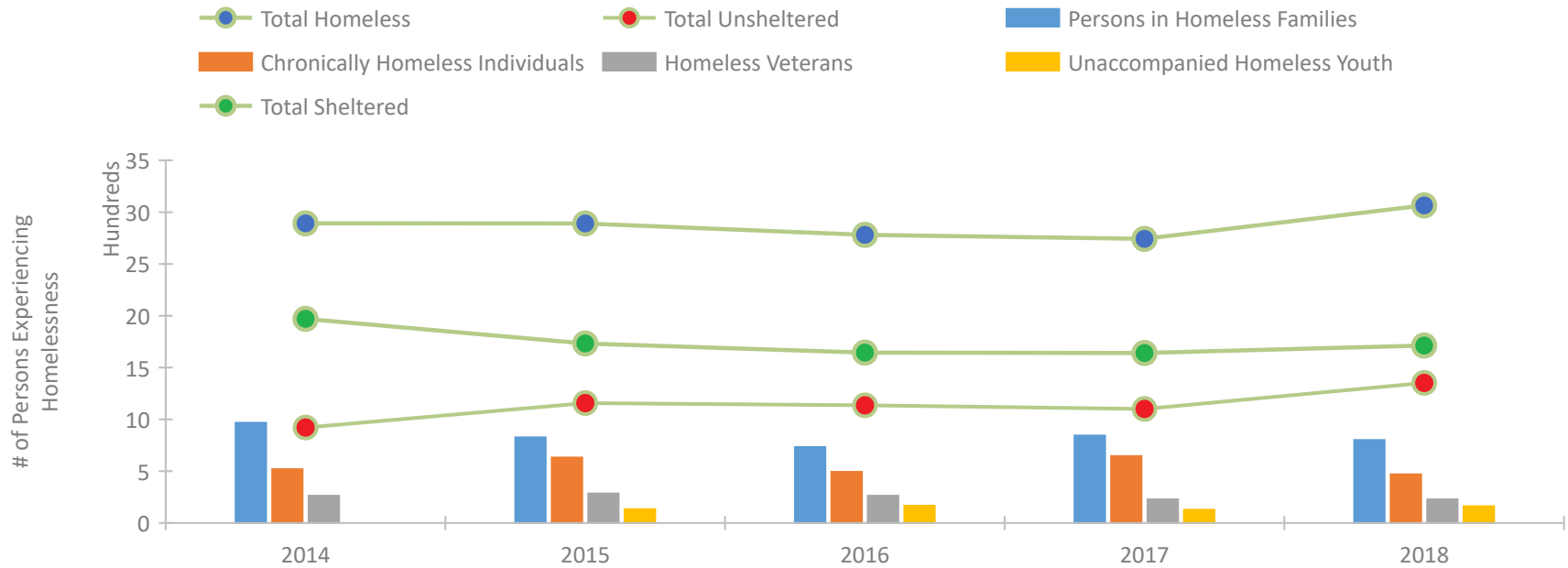
CoC Performance Profile TX-500 San Antonio/Bexar County CoC



Housing Inventory Count by Program Type

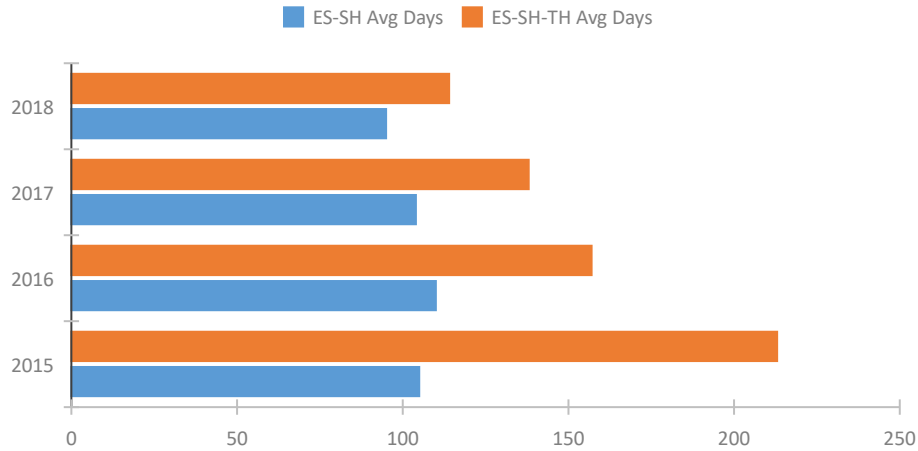


Homeless Population – Point-in-Time (PIT) Count

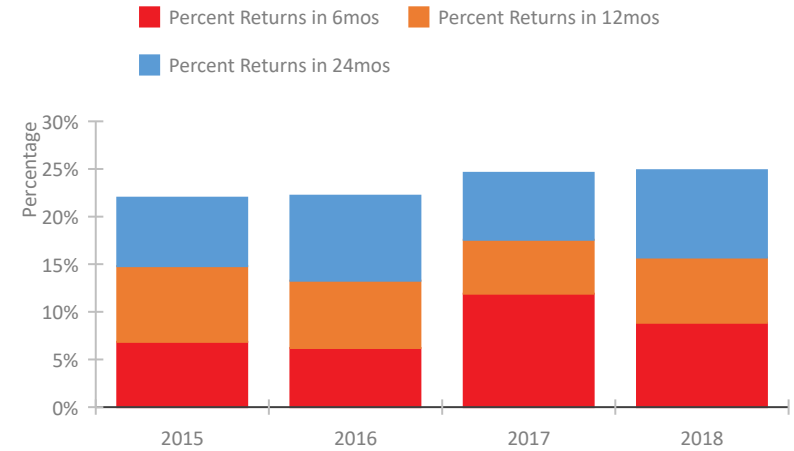


CoC Performance Profile TX-500 San Antonio/Bexar County CoC

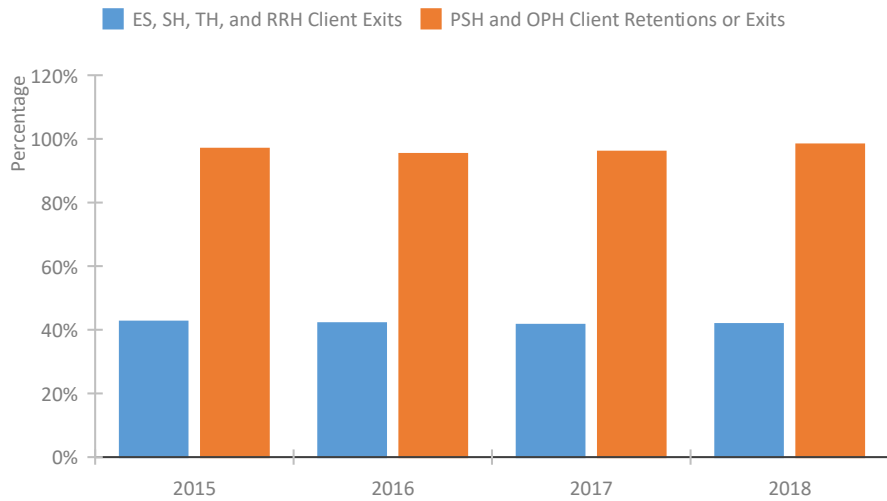
Length of Time Homeless



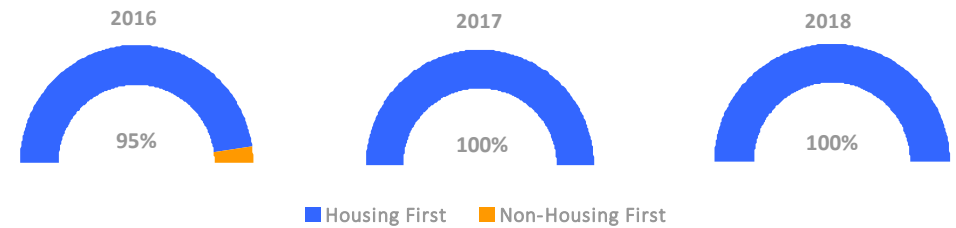
Returns to Homelessness Over Time



Exits to Permanent Housing by Program Type



Proportion of Housing First Projects by Year



Number of Projects by Year			
	2016	2017	2018
Housing First Projects	21	22	22
Non-Housing First Projects	1	0	0

Data Summary: TX-500 San Antonio/Bexar County CoC

Point-In-Time Count Summary

	2014	2015	2016	2017	2018	2017-18 Change	% Change
Number of Sheltered Persons in Families	956	798	695	840	801	-39	-5%
Number of Unsheltered Persons in Families	11	28	38	4	0	-4	-100%
Number of Sheltered Individuals	1,014	935	949	801	912	111	14%
Number of Unsheltered Individuals	911	1,130	1,099	1,098	1,353	255	23%
Total Homeless Persons	2,892	2,891	2,781	2,743	3,066	323	12%
Number of Sheltered Families	275	256	226	241	232	-9	-4%
Number of Unsheltered Families	4	8	9	1	0	-1	-100%
Number of Total Families	279	264	235	242	232	-10	-4%
Sheltered Chronically Homeless Individuals	319	320	196	95	216	121	127%
Unsheltered Chronically Homeless Individuals	201	312	297	551	254	-297	-54%
Total Chronically Homeless Individuals	520	632	493	646	470	-176	-27%
Sheltered Veterans	219	190	164	154	168	14	9%
Unsheltered Veterans	44	94	99	74	60	-14	-19%
Total Veterans	263	284	263	228	228	0	0%
Sheltered Unaccompanied Youth (up to 24)	--	50	77	63	60	-3	-5%
Unsheltered Unaccompanied Youth (up to 24)	--	83	90	64	102	38	59%
Total Unaccompanied Youth (up to 24)	--	133	167	127	162	35	28%

System Performance Measures Summary

	2014	2015	2016	2017	2018	2017-18 Change	% Change
Average Length of Time Homeless (days)	N/A	213	157	138	114	-24	-17.4%
Rate People Return to Homelessness in 6 Months	N/A	6.8%	6.2%	11.9%	8.9%	-3.1%	N/A
Number of People who are Homeless for the First Time	N/A	5177	4896	3656	3217	-439	-12%
Rate People Exit from ES, SH, TH, and RRH to PH	N/A	42.6%	42.0%	41.5%	41.8%	0.3%	N/A
Rate People in PSH and OPH Retain or Exit to PH	N/A	96.9%	95.3%	96.0%	98.2%	2.3%	N/A

Housing Inventory Count Summary

	2014	2015	2016	2017	2018	2017-18 Change	% Change
Emergency Shelter (ES)	1,218	1,380	1,433	1,487	1,267	-220	-15%
Transitional Housing (TH)	1,144	881	795	765	496	-269	-35%
Permanent Supportive Housing (PSH)	1,427	2,042	1,410	2,168	2,154	-14	-1%
Rapid Re-Housing (RRH)	127	--	349	569	642	73	13%
Other Permanent Housing (OPH)	1,098	86	1,098	1,451	1,402	-49	-3%

Award Summary

	2014	2015	2016	2017	2018	2017-18 Change	% Change
Continuum of Care (CoC)	\$7,565,056	\$8,329,314	\$8,654,457	\$9,175,480	\$9,729,143	\$553,663	6%
Emergency Solutions Grants (ESG)	\$1,124,478	\$1,211,510	\$1,236,753	\$1,227,809	\$1,241,470	\$13,661	1%
Youth Homelessness Demonstration Program (YHDP)	N/A	N/A	--	--	\$6,881,802	--	--