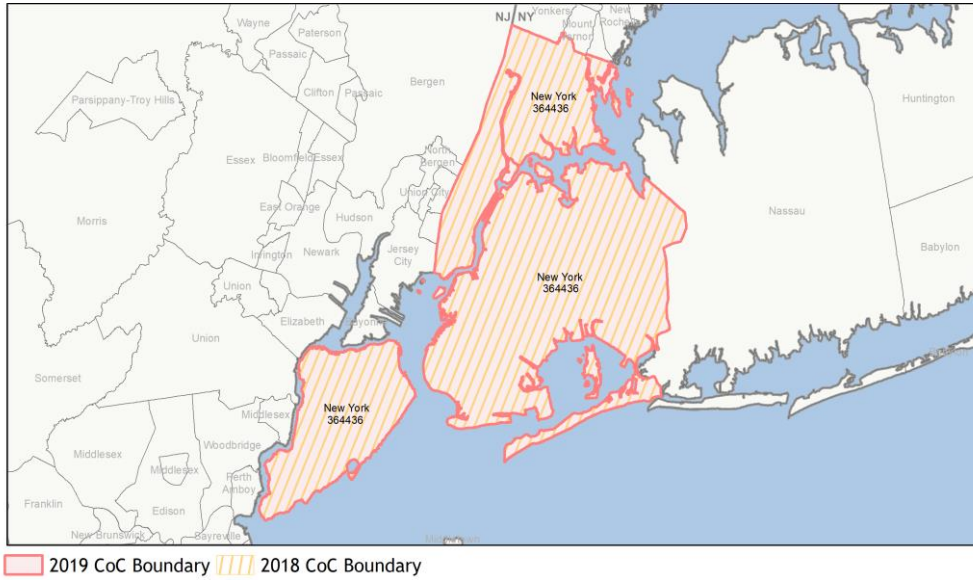
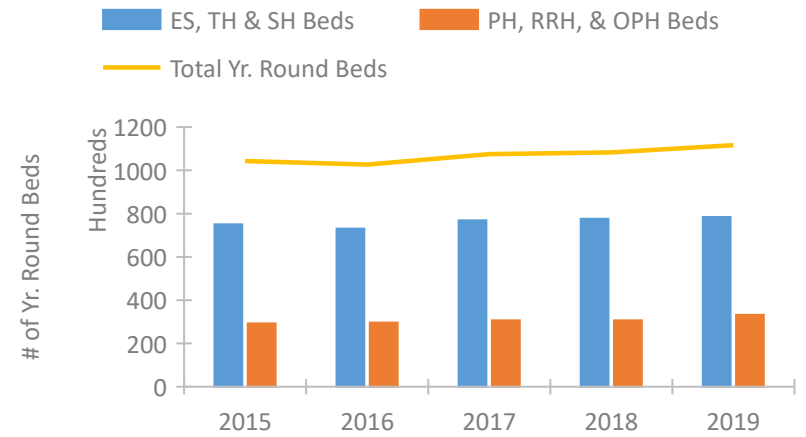


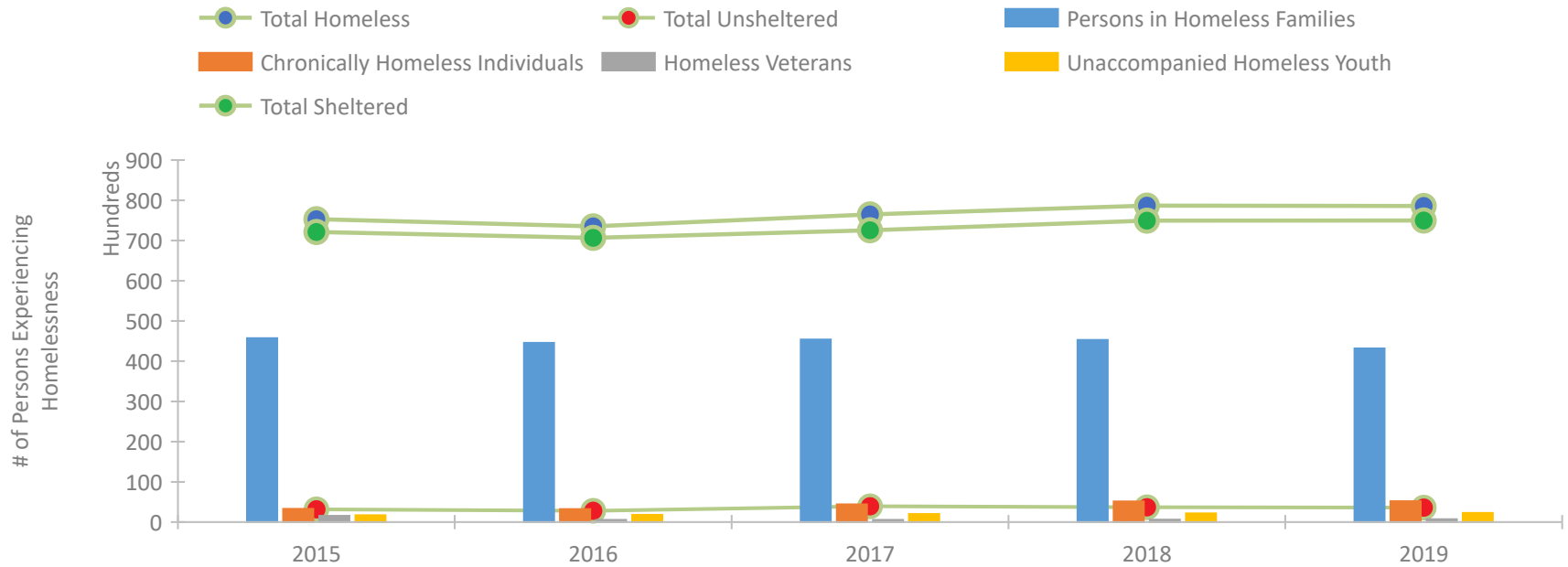
## CoC Performance Profile NY-600 New York City CoC



### Housing Inventory Count by Program Type

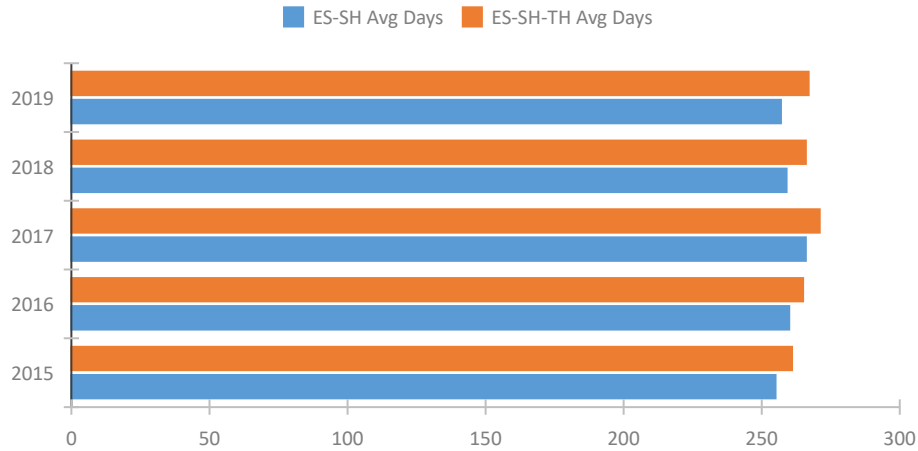


### Homeless Population – Point-in-Time (PIT) Count

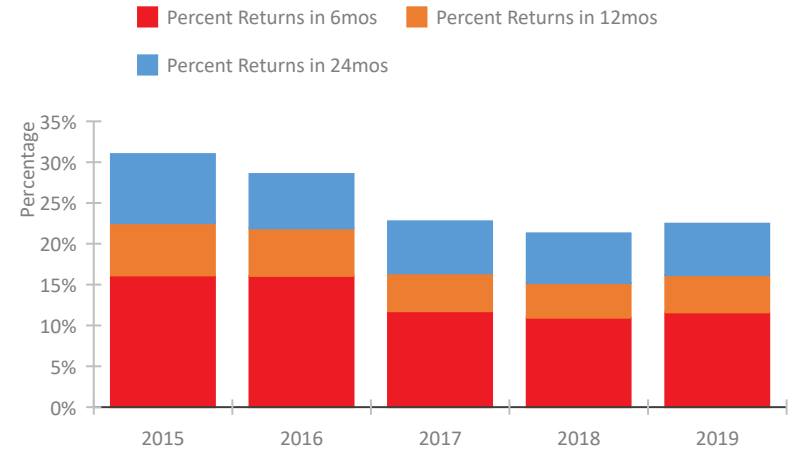


## CoC Performance Profile NY-600 New York City CoC

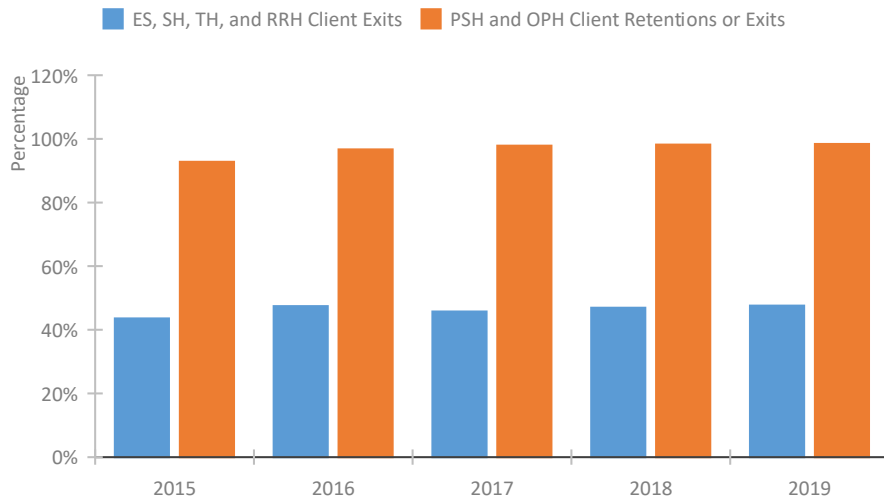
### Length of Time Homeless



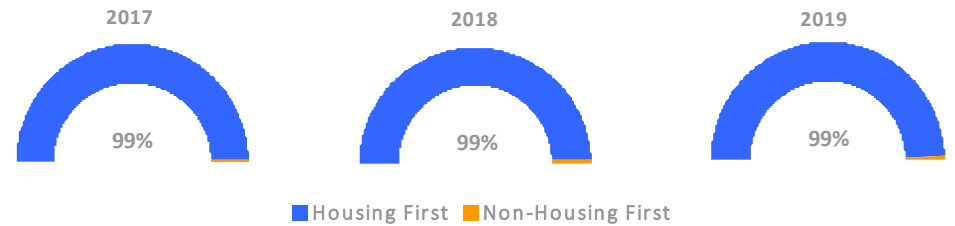
### Returns to Homelessness Over Time



### Exits to Permanent Housing by Program Type



### Proportion of Housing First Projects by Year



#### Number of Projects by Year

	2017	2018	2019
Housing First Projects	181	183	184
Non-Housing First Projects	1	1	1

## Data Summary: NY-600 New York City CoC

### Point-In-Time Count Summary

	2015	2016	2017	2018	2019	2018-19 Change	% Change
Number of Sheltered Persons in Families	45,711	44,558	45,377	45,285	43,177	-2,108	-5%
Number of Unsheltered Persons in Families	0	0	0	0	0	0	--
Number of Sheltered Individuals	26,429	26,127	27,188	29,680	31,805	2,125	7%
Number of Unsheltered Individuals	3,183	2,838	3,936	3,711	3,622	-89	-2%
<b>Total Homeless Persons</b>	<b>75,323</b>	<b>73,523</b>	<b>76,501</b>	<b>78,676</b>	<b>78,604</b>	<b>-72</b>	<b>0%</b>
Number of Sheltered Families	13,233	13,483	14,245	14,261	13,806	-455	-3%
Number of Unsheltered Families	0	0	0	0	0	0	--
<b>Number of Total Families</b>	<b>13,233</b>	<b>13,483</b>	<b>14,245</b>	<b>14,261</b>	<b>13,806</b>	<b>-455</b>	<b>-3%</b>
Sheltered Chronically Homeless Individuals	1,239	1,417	2,601	3,662	3,759	97	3%
Unsheltered Chronically Homeless Individuals	2,036	1,813	1,800	1,469	1,434	-35	-2%
<b>Total Chronically Homeless Individuals</b>	<b>3,275</b>	<b>3,230</b>	<b>4,401</b>	<b>5,131</b>	<b>5,193</b>	<b>62</b>	<b>1%</b>
Sheltered Veterans	1,499	527	507	597	678	81	14%
Unsheltered Veterans	59	32	28	8	6	-2	-25%
<b>Total Veterans</b>	<b>1,558</b>	<b>559</b>	<b>535</b>	<b>605</b>	<b>684</b>	<b>79</b>	<b>13%</b>
Sheltered Unaccompanied Youth (up to 24)	1,518	1,653	1,738	1,922	2,093	171	9%
Unsheltered Unaccompanied Youth (up to 24)	188	152	265	220	170	-50	-23%
<b>Total Unaccompanied Youth (up to 24)</b>	<b>1,706</b>	<b>1,805</b>	<b>2,003</b>	<b>2,142</b>	<b>2,263</b>	<b>121</b>	<b>6%</b>

### System Performance Measures Summary

	2015	2016	2017	2018	2019	2018-19 Change	% Change
Average Length of Time Homeless (days)	261	265	271	266	267	1	0.4%
Rate People Return to Homelessness in 6 Months	16.1%	16.1%	11.7%	11.0%	11.6%	0.6%	N/A
Number of People who are Homeless for the First Time	62,145	62,981	62,766	64,739	61,781	-2,958	-4.6%
Rate People Exit from ES, SH, TH, and RRH to PH	43.6%	47.4%	45.7%	46.9%	47.6%	0.7%	N/A
Rate People in PSH and OPH Retain or Exit to PH	92.8%	96.7%	97.8%	98.2%	98.4%	0.2%	N/A

### Housing Inventory Count Summary

	2015	2016	2017	2018	2019	2018-19 Change	% Change
Emergency Shelter (ES)	69,927	68,686	73,675	74,543	75,245	702	1%
Safe Haven (SH)	162	162	40	40	40	0	0%
Transitional Housing (TH)	4,979	4,197	3,150	3,041	3,117	76	2%
Permanent Supportive Housing (PSH)	26,722	28,640	28,078	29,266	32,150	2,884	10%
Rapid Re-Housing (RRH)	2,506	1,010	2,567	1,380	1,053	-327	-24%

### Award Summary

	2015	2016	2017	2018	2019	2018-19 Change	% Change
<b>Continuum of Care (CoC)</b>	\$121,965,844	\$107,493,608	\$107,934,572	\$117,583,916	\$124,630,884	\$7,046,968	6%
<b>Emergency Solutions Grants (ESG)</b>	\$13,600,063	\$13,625,907	\$13,542,650	\$13,529,906	\$14,126,459	\$596,553	4%