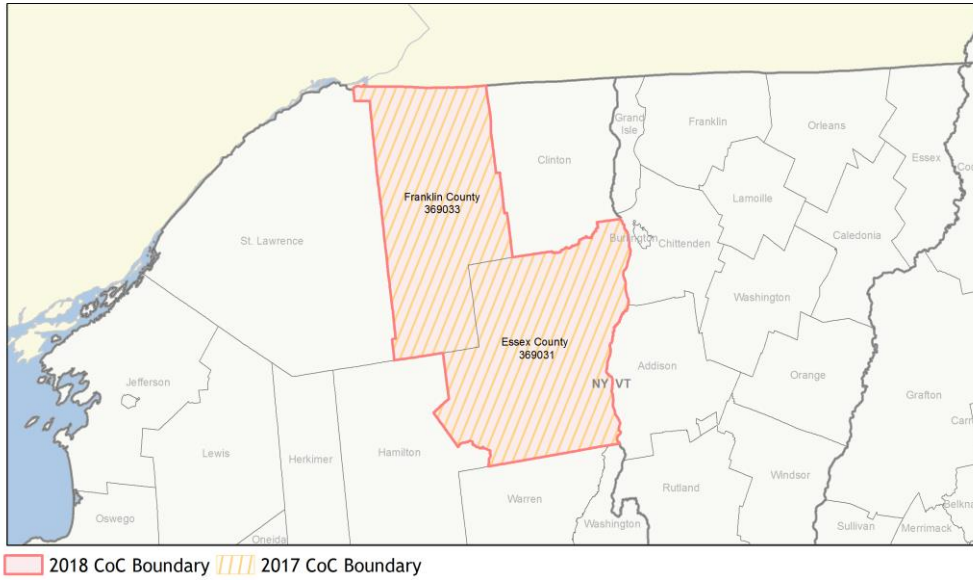
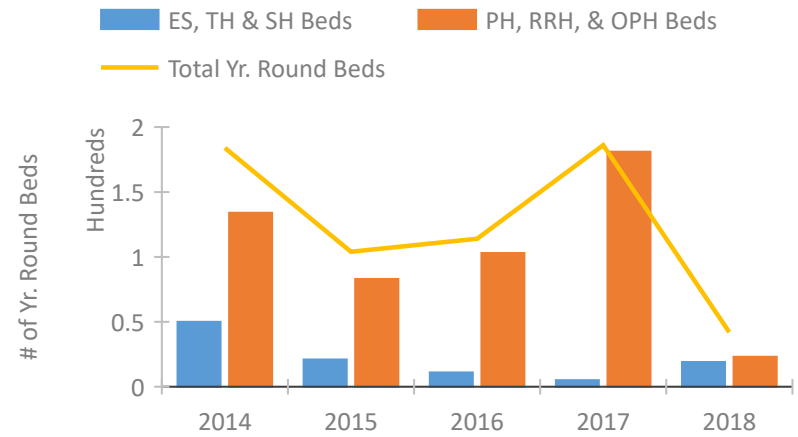


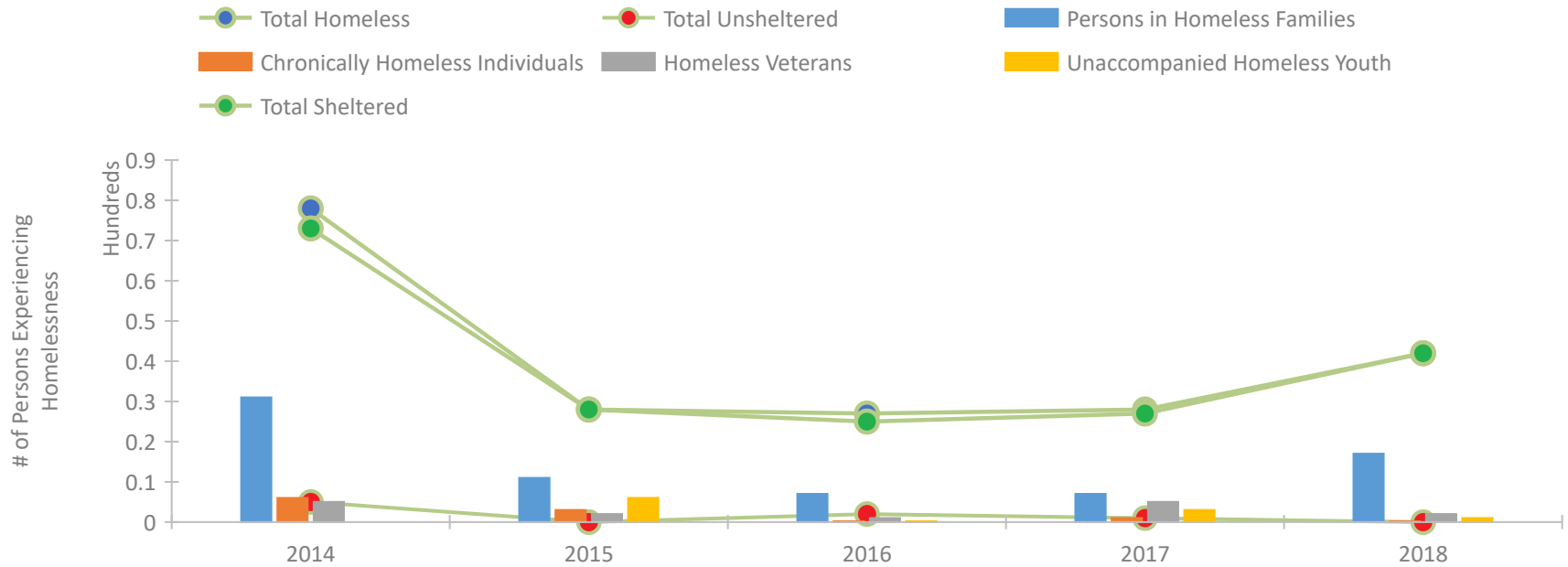
CoC Performance Profile NY-520 Franklin, Essex Counties CoC



Housing Inventory Count by Program Type

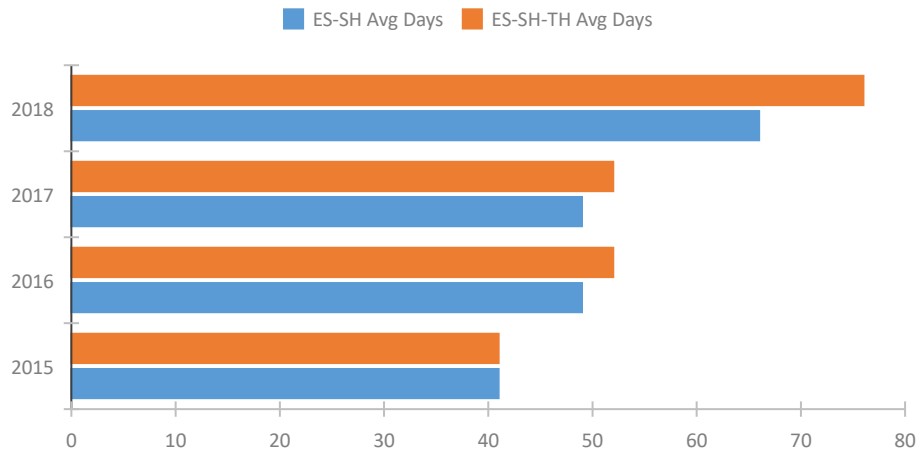


Homeless Population – Point-in-Time (PIT) Count

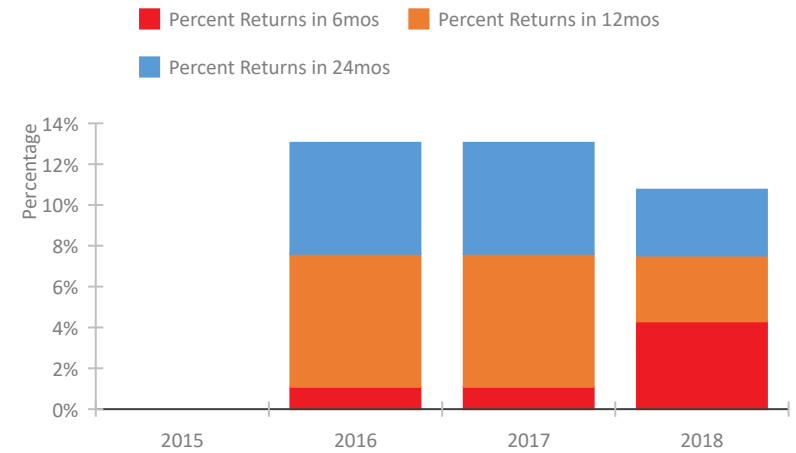


CoC Performance Profile NY-520 Franklin, Essex Counties CoC

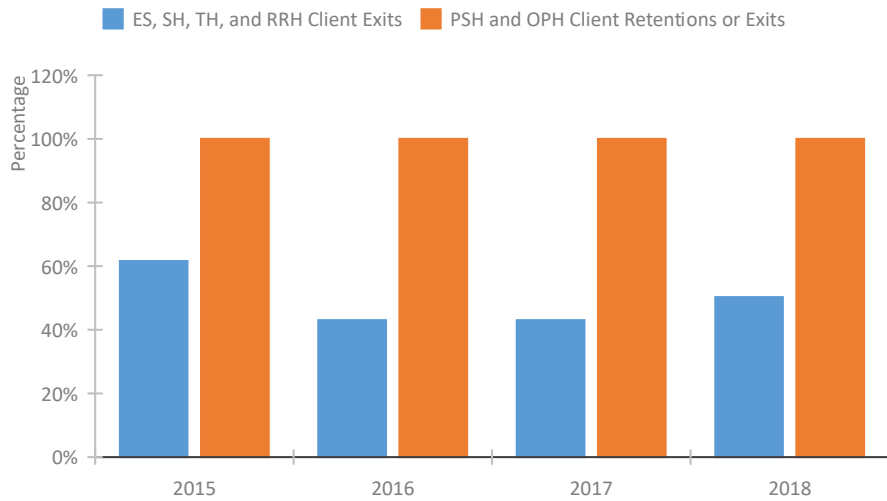
Length of Time Homeless



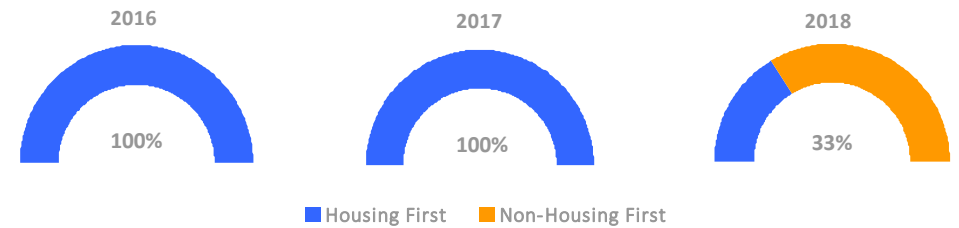
Returns to Homelessness Over Time



Exits to Permanent Housing by Program Type



Proportion of Housing First Projects by Year



Number of Projects by Year

	2016	2017	2018
Housing First Projects	2	3	1
Non-Housing First Projects	0	0	2

Data Summary: NY-520 Franklin, Essex Counties CoC

Point-In-Time Count Summary

	2014	2015	2016	2017	2018	2017-18 Change	% Change
Number of Sheltered Persons in Families	29	11	5	7	17	10	143%
Number of Unsheltered Persons in Families	2	0	2	0	0	0	--
Number of Sheltered Individuals	44	17	20	20	25	5	25%
Number of Unsheltered Individuals	3	0	0	1	0	-1	-100%
Total Homeless Persons	78	28	27	28	42	14	50%
Number of Sheltered Families	9	3	1	3	5	2	67%
Number of Unsheltered Families	1	0	1	0	0	0	--
Number of Total Families	10	3	2	3	5	2	67%
Sheltered Chronically Homeless Individuals	3	3	0	0	0	0	--
Unsheltered Chronically Homeless Individuals	3	0	0	1	0	-1	-100%
Total Chronically Homeless Individuals	6	3	0	1	0	-1	-100%
Sheltered Veterans	2	2	1	4	2	-2	-50%
Unsheltered Veterans	3	0	0	1	0	-1	-100%
Total Veterans	5	2	1	5	2	-3	-60%
Sheltered Unaccompanied Youth (up to 24)	--	6	0	3	1	-2	-67%
Unsheltered Unaccompanied Youth (up to 24)	--	0	0	0	0	0	--
Total Unaccompanied Youth (up to 24)	--	6	0	3	1	-2	-67%

System Performance Measures Summary

	2014	2015	2016	2017	2018	2017-18 Change	% Change
Average Length of Time Homeless (days)	N/A	41	52	52	76	24	46.2%
Rate People Return to Homelessness in 6 Months	N/A	0.0%	1.1%	1.1%	4.3%	3.2%	N/A
Number of People who are Homeless for the First Time	N/A	170	187	187	172	-15	-8%
Rate People Exit from ES, SH, TH, and RRH to PH	N/A	61.6%	43.0%	43.0%	50.3%	7.2%	N/A
Rate People in PSH and OPH Retain or Exit to PH	N/A	100.0%	100.0%	100.0%	100.0%	0%	N/A

Housing Inventory Count Summary

	2014	2015	2016	2017	2018	2017-18 Change	% Change
Emergency Shelter (ES)	20	21	11	5	5	0	0%
Transitional Housing (TH)	30	--	--	--	14	--	--
Permanent Supportive Housing (PSH)	134	83	103	180	21	-159	-88%
Rapid Re-Housing (RRH)	--	--	--	1	2	1	100%

Award Summary

	2014	2015	2016	2017	2018	2017-18 Change	% Change
Continuum of Care (CoC)	\$51,601	\$89,223	\$88,936	\$90,731	\$90,741	\$10	0%
ESG (NY state recipient - no direct funding)	\$5,377,468	\$6,095,906	\$6,079,281	\$6,562,502	\$5,956,365	(\$606,137)	-9%