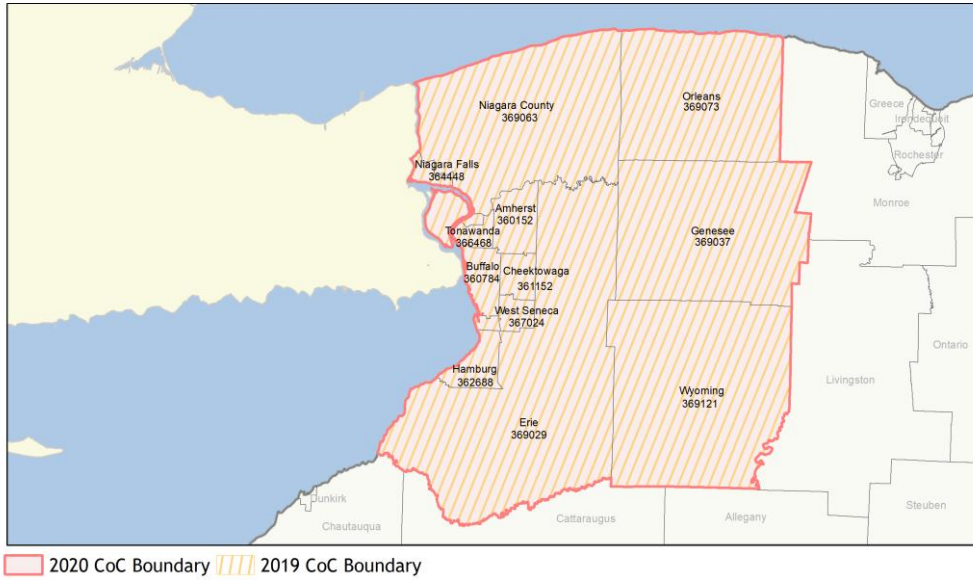
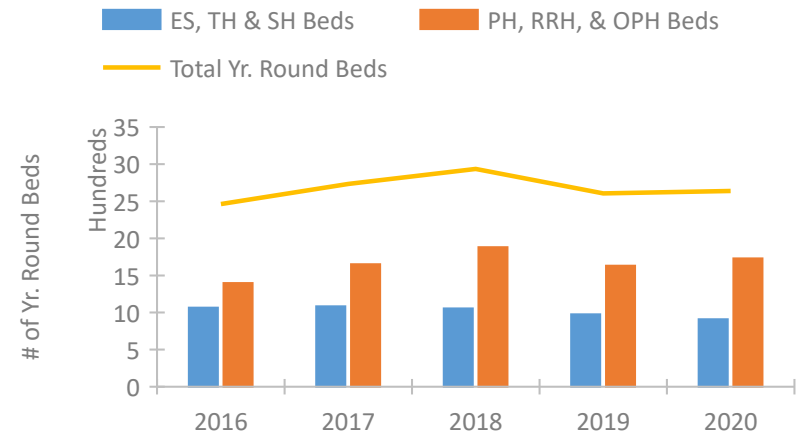


CoC Performance Profile NY-508

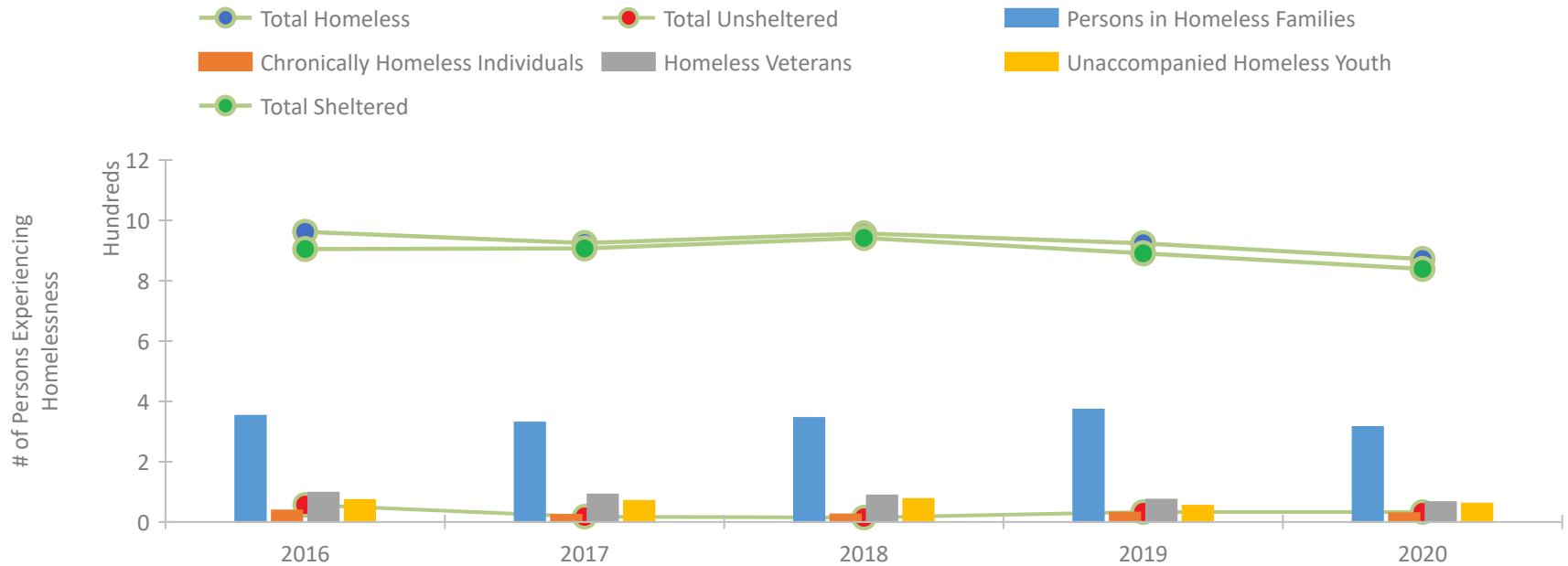
Buffalo, Niagara Falls/Erie, Niagara, Orleans, Genesee, Wyoming Counties CoC



Housing Inventory Count by Program Type



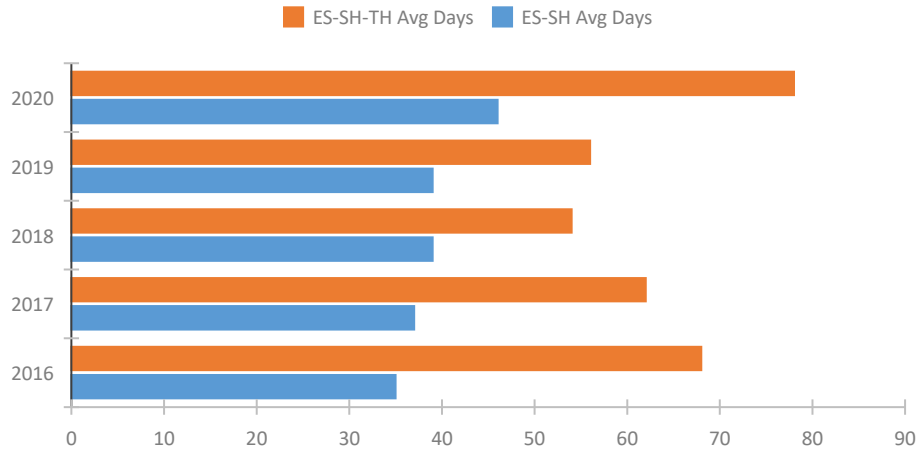
Homeless Population – Point-in-Time (PIT) Count



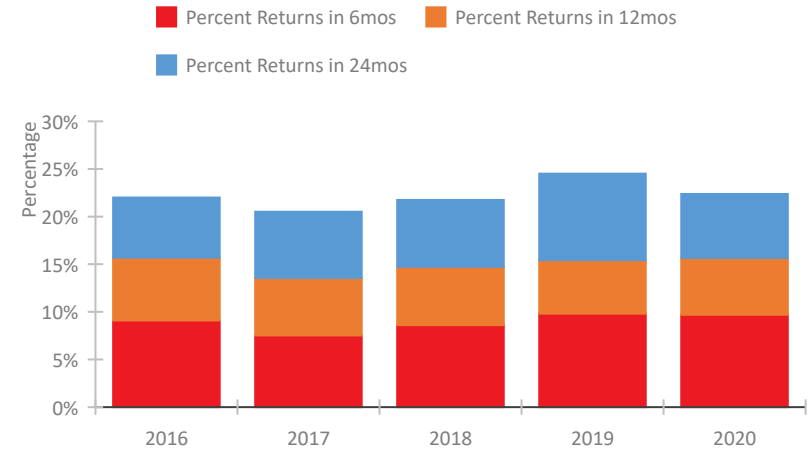
CoC Performance Profile NY-508

Buffalo, Niagara Falls/Erie, Niagara, Orleans, Genesee, Wyoming Counties CoC

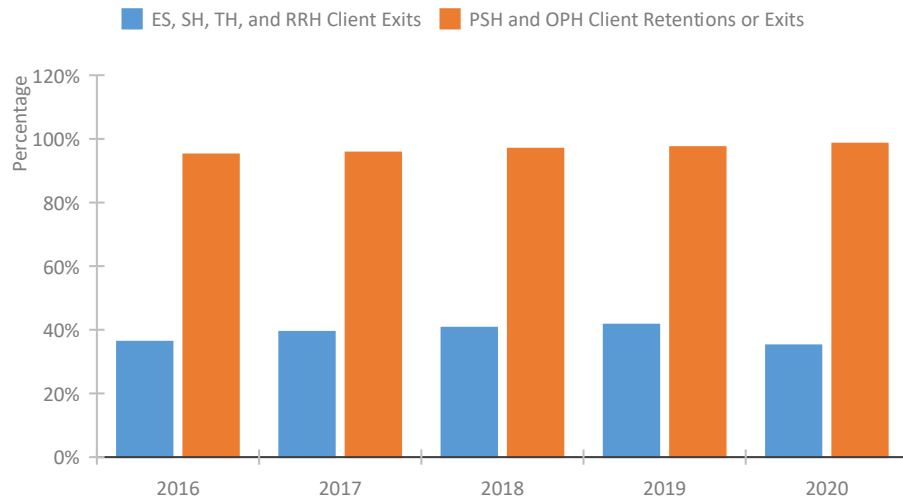
Length of Time Homeless



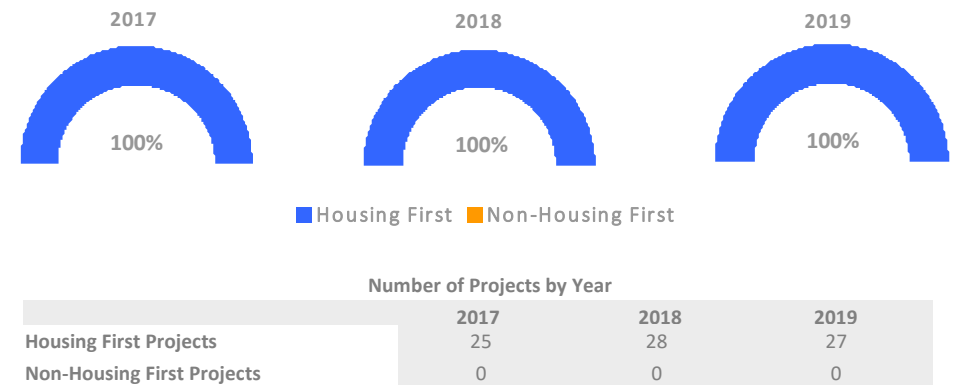
Returns to Homelessness Over Time



Exits to Permanent Housing by Program Type



Proportion of Housing First Projects by Year*



*In 2020 HUD awarded renewal projects noncompetitively, therefore no new data was collected and Housing First data remains the same from 2019 to 2020.

Data Summary: NY-508 Buffalo, Niagara Falls/Erie, Niagara, Orleans, Genesee, Wyoming Counties CoC

Point-In-Time Count Summary

	2016	2017	2018	2019	2020	2019-20 Change	% Change
Number of Sheltered Persons in Families	352	330	345	373	315	-58	-16%
Number of Unsheltered Persons in Families	0	0	0	0	0	0	--
Number of Sheltered Individuals	553	577	597	518	524	6	1%
Number of Unsheltered Individuals	57	18	15	33	33	0	-0%
Total Homeless Persons	962	925	957	924	872	-52	-6%
Number of Sheltered Families	124	110	108	118	95	-23	-19%
Number of Unsheltered Families	0	0	0	0	0	0	--
Number of Total Families	124	110	108	118	95	-23	-19%
Sheltered Chronically Homeless Individuals	23	21	25	28	21	-7	-25%
Unsheltered Chronically Homeless Individuals	15	3	0	3	8	5	167%
Total Chronically Homeless Individuals	38	24	25	31	29	-2	-6%
Sheltered Veterans	88	89	88	73	63	-10	-14%
Unsheltered Veterans	9	2	0	1	3	2	200%
Total Veterans	97	91	88	74	66	-8	-11%
Sheltered Unaccompanied Youth (up to 24)	72	70	76	52	61	9	17%
Unsheltered Unaccompanied Youth (up to 24)	1	0	0	2	0	-2	-100%
Total Unaccompanied Youth (up to 24)	73	70	76	54	61	7	13%

System Performance Measures Summary

	2016	2017	2018	2018	2020	2019-20 Change	% Change
Average Length of Time Homeless (days)	68	62	54	56	78	22	39.3%
Rate People Return to Homelessness in 6 Months	9.1%	7.5%	8.6%	9.8%	9.7%	-0.1%	N/A
Number of People who are Homeless for the First Time	3,624	4,085	4,086	3,813	3,355	-458	-12%
Rate People Exit from ES, SH, TH, and RRH to PH	36.2%	39.3%	40.6%	41.6%	35.1%	-6.5%	N/A
Rate People in PSH and OPH Retain or Exit to PH	95.1%	95.7%	96.9%	97.4%	98.5%	1.1%	N/A

Housing Inventory Count Summary

	2016	2017	2018	2019	2020	2019-20 Change	% Change
Emergency Shelter (ES)	591	649	695	675	656	-19	-3%
Transitional Housing (TH)	459	418	344	285	253	-32	-11%
Permanent Supportive Housing (PSH)	1,206	1,255	1,434	1,206	1,225	19	2%
Rapid Re-Housing (RRH)	165	396	420	384	465	81	21%
Other Permanent Housing (OPH)	26	--	26	40	40	0	-0%

Award Summary

	2016	2017	2018	2019	2020	2019-20 Change	% Change
Continuum of Care (CoC)	\$11,765,574	\$12,123,086	\$12,207,363	\$12,973,261	\$13,839,923	\$866,662	7%
Emergency Solutions Grants (ESG)	\$1,692,936	\$1,548,735	\$1,678,544	\$1,732,580	\$1,791,790	\$59,210	3%
Youth Homelessness Demonstration Program (YHDP)	--	--	\$3,592,570	--	--	--	--