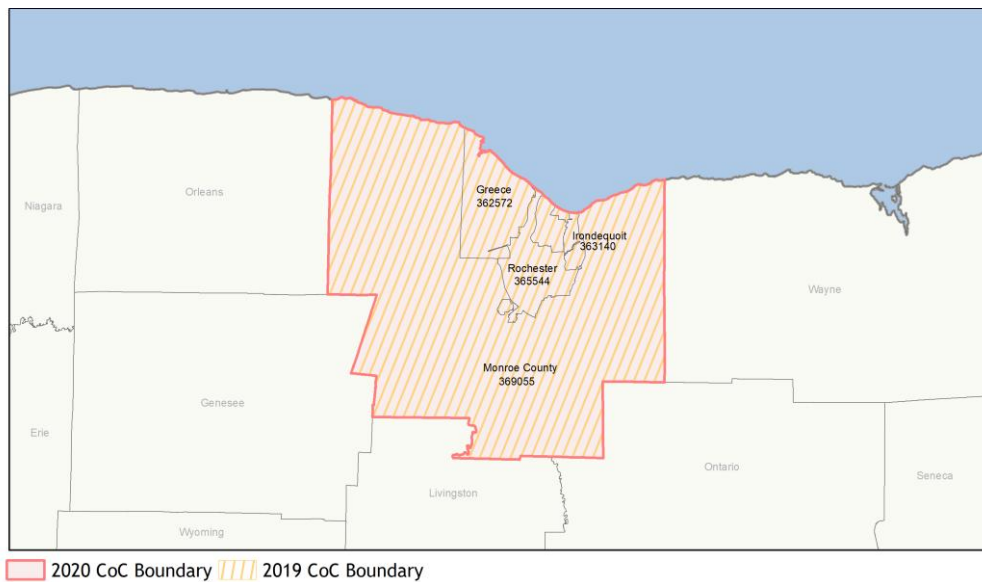
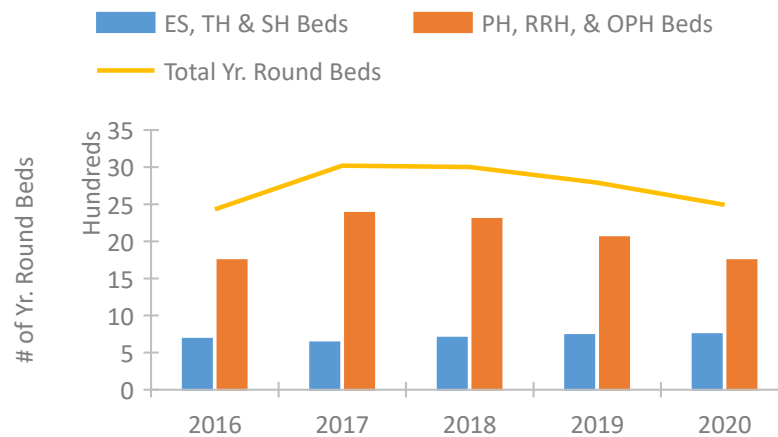


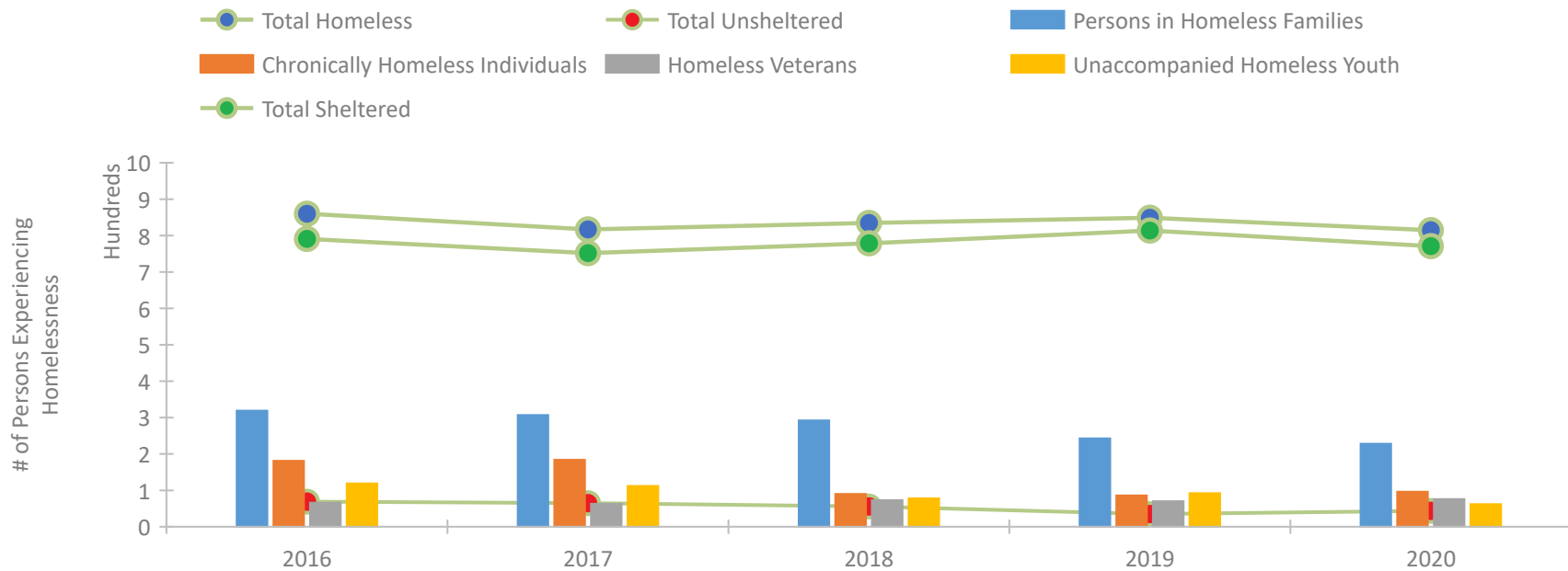
CoC Performance Profile NY-500 Rochester, Irondequoit, Greece/Monroe County CoC



Housing Inventory Count by Program Type

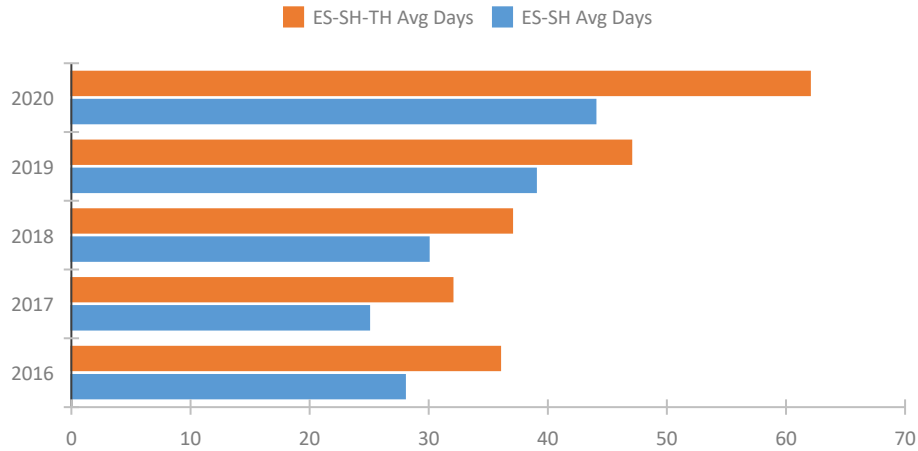


Homeless Population – Point-in-Time (PIT) Count

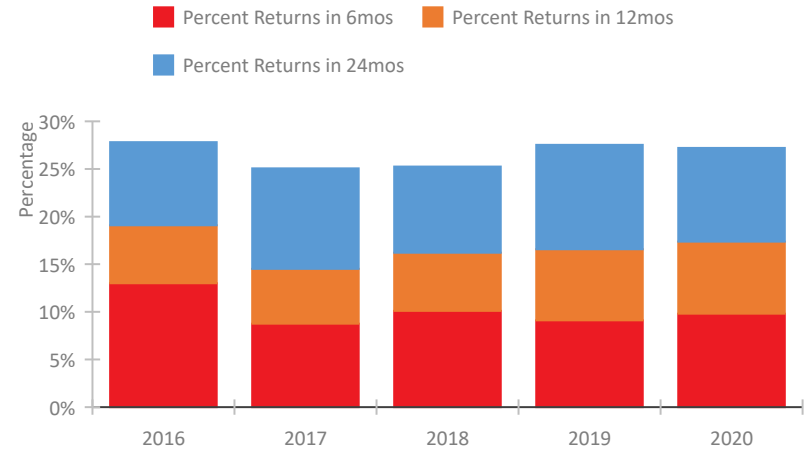


CoC Performance Profile NY-500 Rochester, Irondequoit, Greece/Monroe County CoC

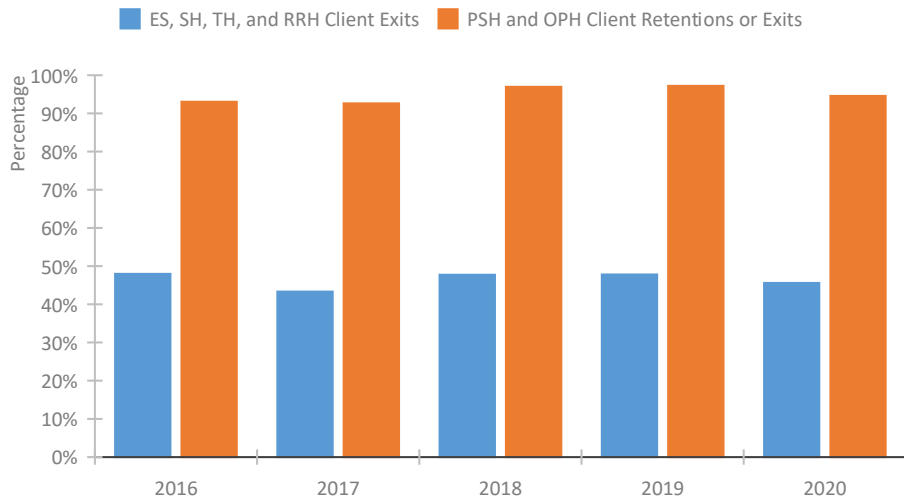
Length of Time Homeless



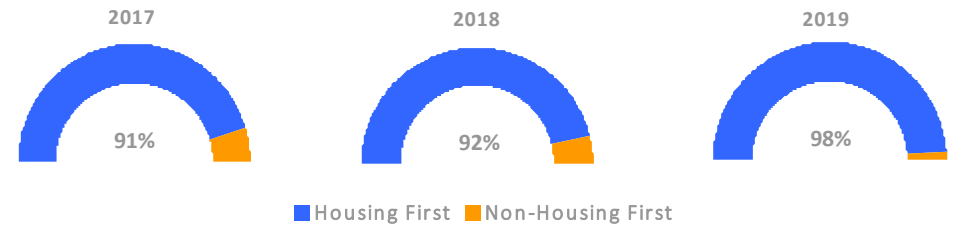
Returns to Homelessness Over Time



Exits to Permanent Housing by Program Type



Proportion of Housing First Projects by Year*



Number of Projects by Year

	2017	2018	2019
Housing First Projects	42	46	41
Non-Housing First Projects	4	4	1

*In 2020 HUD awarded renewal projects noncompetitively, therefore no new data was collected and Housing First data remains the same from 2019 to 2020.

Data Summary: NY-500 Rochester, Irondequoit, Greece/Monroe County CoC

Point-In-Time Count Summary

	2016	2017	2018	2019	2020	2019-20 Change	% Change
Number of Sheltered Persons in Families	314	307	292	243	228	-15	-6%
Number of Unsheltered Persons in Families	5	0	0	0	0	0	--
Number of Sheltered Individuals	477	445	487	571	543	-28	-5%
Number of Unsheltered Individuals	64	65	56	35	44	9	26%
Total Homeless Persons	860	817	835	849	815	-34	-4%
Number of Sheltered Families	108	99	96	77	72	-5	-6%
Number of Unsheltered Families	2	0	0	0	0	0	--
Number of Total Families	110	99	96	77	72	-5	-6%
Sheltered Chronically Homeless Individuals	164	137	80	70	82	12	17%
Unsheltered Chronically Homeless Individuals	17	47	10	16	14	-2	-12%
Total Chronically Homeless Individuals	181	184	90	86	96	10	12%
Sheltered Veterans	60	56	65	65	74	9	14%
Unsheltered Veterans	6	7	8	5	2	-3	-60%
Total Veterans	66	63	73	70	76	6	9%
Sheltered Unaccompanied Youth (up to 24)	110	105	78	89	61	-28	-31%
Unsheltered Unaccompanied Youth (up to 24)	9	7	0	3	1	-2	-67%
Total Unaccompanied Youth (up to 24)	119	112	78	92	62	-30	-33%

System Performance Measures Summary

	2016	2017	2018	2018	2020	2019-20 Change	% Change
Average Length of Time Homeless (days)	36	32	37	47	62	15	31.9%
Rate People Return to Homelessness in 6 Months	13.0%	8.8%	10.1%	9.1%	9.8%	0.7%	N/A
Number of People who are Homeless for the First Time	4,022	4,085	4,170	3,845	3,184	-661	-17.2%
Rate People Exit from ES, SH, TH, and RRH to PH	48.0%	43.3%	47.7%	47.8%	45.6%	-2.2%	N/A
Rate People in PSH and OPH Retain or Exit to PH	93.0%	92.6%	97.0%	97.2%	94.6%	-2.6%	N/A

Housing Inventory Count Summary

	2016	2017	2018	2019	2020	2019-20 Change	% Change
Emergency Shelter (ES)	457	488	555	585	575	-10	-2%
Safe Haven (SH)	12	12	12	12	12	0	-0%
Transitional Housing (TH)	216	137	133	139	161	22	16%
Permanent Supportive Housing (PSH)	1,706	1,985	1,726	1,465	1,298	-167	-11%
Rapid Re-Housing (RRH)	40	398	576	591	438	-153	-26%
Other Permanent Housing (OPH)	--	--	--	--	9	--	--

Award Summary

	2016	2017	2018	2019	2020	2019-20 Change	% Change
Continuum of Care (CoC)	\$11,853,955	\$12,425,702	\$12,511,442	\$12,736,174	\$13,221,604	\$485,430	4%
Emergency Solutions Grants (ESG)	\$851,149	\$1,135,736	\$822,804	\$839,105	\$870,427	\$31,322	4%