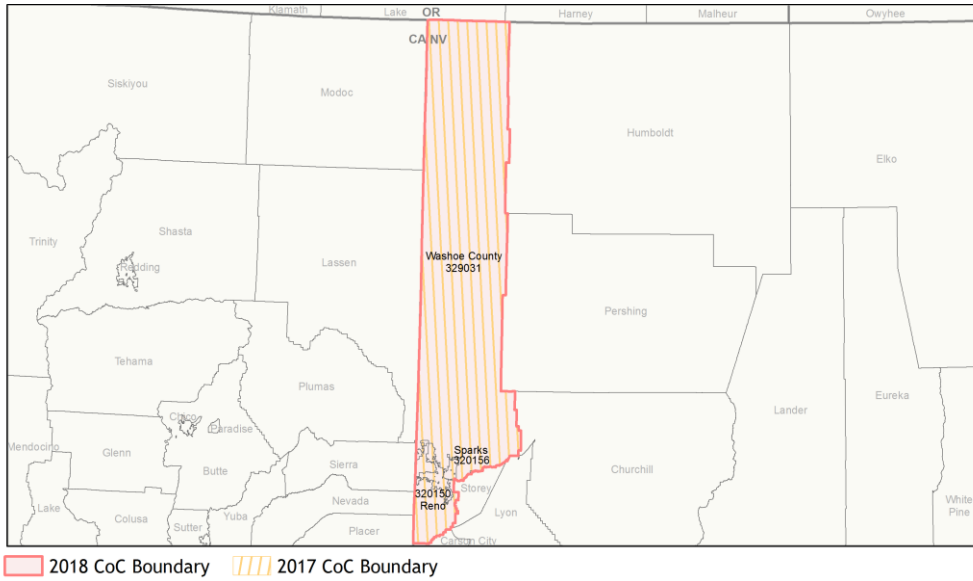
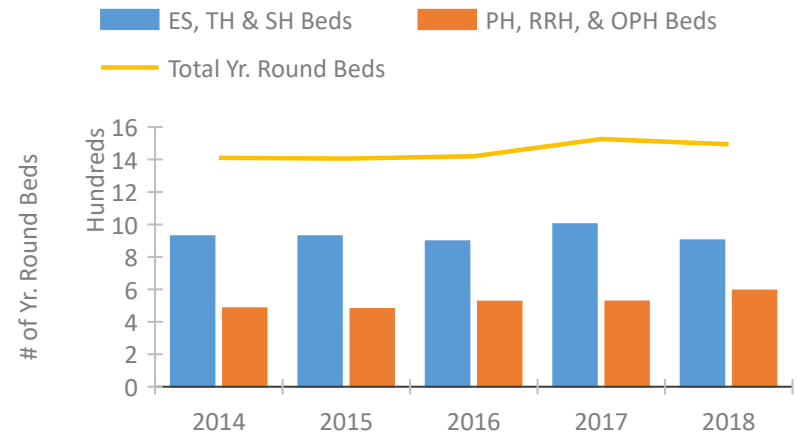


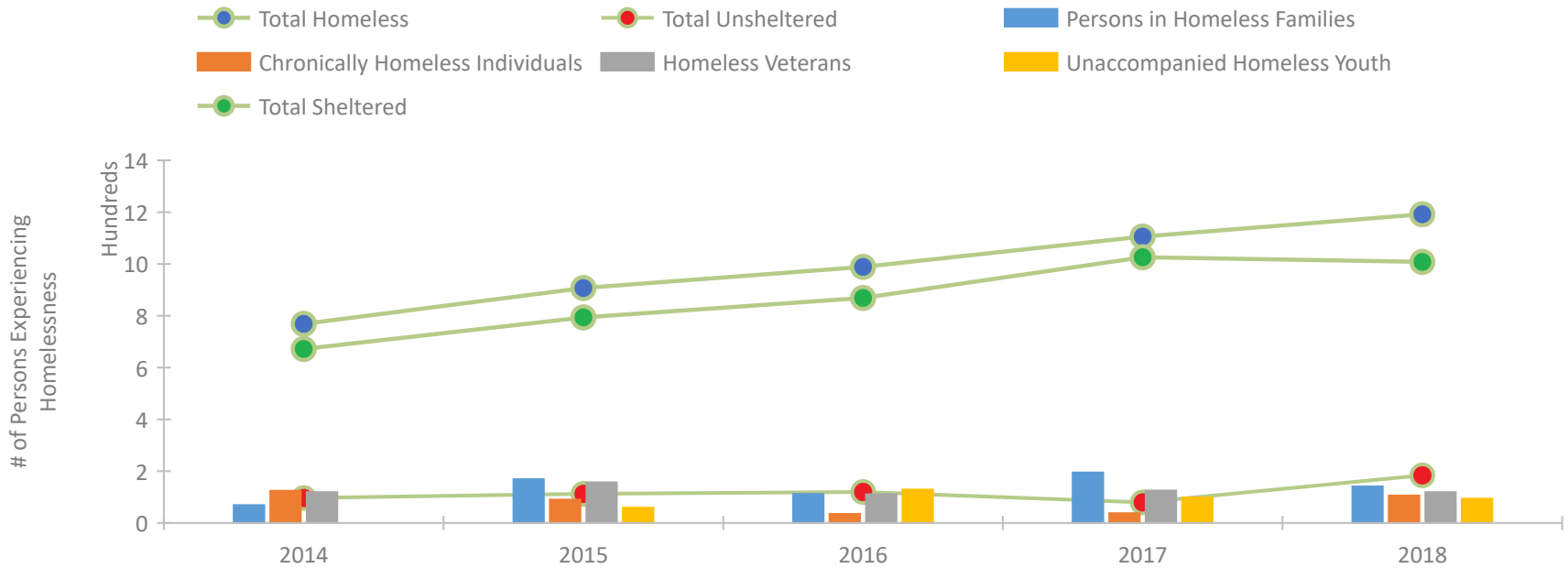
CoC Performance Profile NV-501 Reno, Sparks/Washoe County CoC



Housing Inventory Count by Program Type

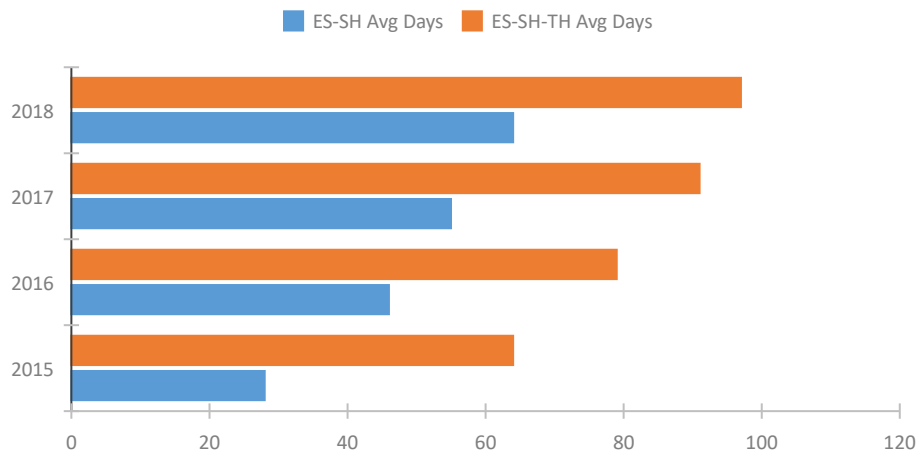


Homeless Population – Point-in-Time (PIT) Count

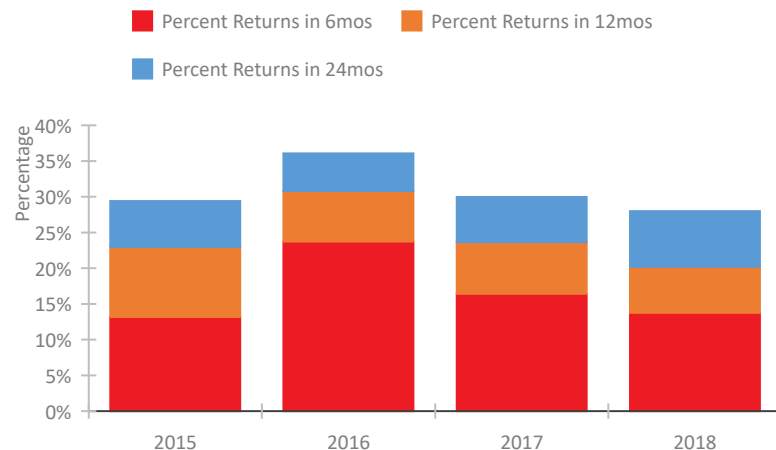


CoC Performance Profile NV-501 Reno, Sparks/Washoe County CoC

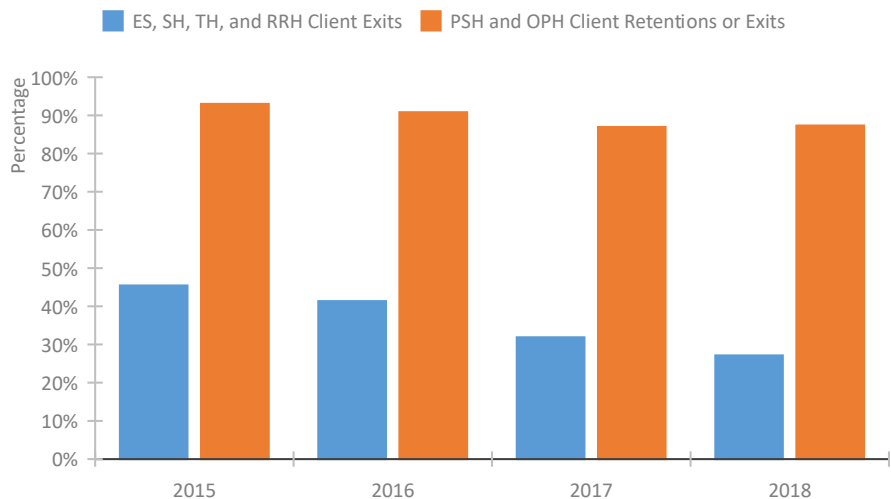
Length of Time Homeless



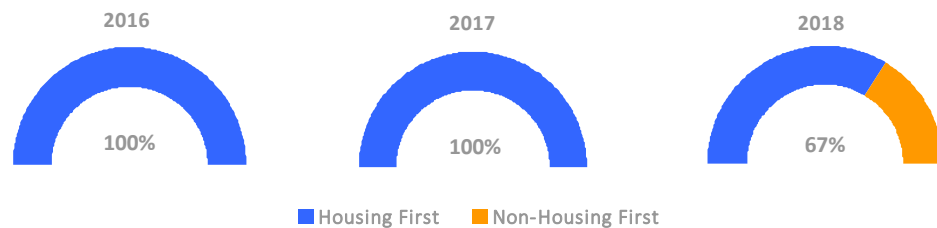
Returns to Homelessness Over Time



Exits to Permanent Housing by Program Type



Proportion of Housing First Projects by Year



Number of Projects by Year

| | 2016 | 2017 | 2018 |
|----------------------------|------|------|------|
| Housing First Projects | 7 | 8 | 6 |
| Non-Housing First Projects | 0 | 0 | 3 |

Data Summary: NV-501 Reno, Sparks/Washoe County CoC

Point-In-Time Count Summary

| | 2014 | 2015 | 2016 | 2017 | 2018 | 2017-18 Change | % Change |
|---|------------|------------|------------|--------------|--------------|----------------|-------------|
| Number of Sheltered Persons in Families | 69 | 169 | 112 | 195 | 141 | -54 | -28% |
| Number of Unsheltered Persons in Families | 0 | 0 | 0 | 0 | 0 | 0 | -- |
| Number of Sheltered Individuals | 603 | 625 | 757 | 831 | 867 | 36 | 4% |
| Number of Unsheltered Individuals | 97 | 113 | 120 | 80 | 184 | 104 | 130% |
| Total Homeless Persons | 769 | 907 | 989 | 1,106 | 1,192 | 86 | 8% |
| Number of Sheltered Families | 24 | 54 | 38 | 55 | 46 | -9 | -16% |
| Number of Unsheltered Families | 0 | 0 | 0 | 0 | 0 | 0 | -- |
| Number of Total Families | 24 | 54 | 38 | 55 | 46 | -9 | -16% |
| Sheltered Chronically Homeless Individuals | 55 | 52 | 11 | 29 | 71 | 42 | 145% |
| Unsheltered Chronically Homeless Individuals | 69 | 38 | 24 | 9 | 35 | 26 | 289% |
| Total Chronically Homeless Individuals | 124 | 90 | 35 | 38 | 106 | 68 | 179% |
| Sheltered Veterans | 104 | 136 | 103 | 121 | 99 | -22 | -18% |
| Unsheltered Veterans | 15 | 21 | 8 | 4 | 20 | 16 | 400% |
| Total Veterans | 119 | 157 | 111 | 125 | 119 | -6 | -5% |
| Sheltered Unaccompanied Youth (up to 24) | -- | 39 | 90 | 80 | 71 | -9 | -11% |
| Unsheltered Unaccompanied Youth (up to 24) | -- | 20 | 39 | 18 | 23 | 5 | 28% |
| Total Unaccompanied Youth (up to 24) | -- | 59 | 129 | 98 | 94 | -4 | -4% |

System Performance Measures Summary

| | 2014 | 2015 | 2016 | 2017 | 2018 | 2017-18 Change | % Change |
|--|------|-------|-------|-------|-------|----------------|----------|
| Average Length of Time Homeless (days) | N/A | 64 | 79 | 91 | 97 | 6 | 6.6% |
| Rate People Return to Homelessness in 6 Months | N/A | 13.2% | 23.7% | 16.4% | 13.7% | -2.7% | N/A |
| Number of People who are Homeless for the First Time | N/A | 1805 | 2179 | 2066 | 2075 | 9 | 0.4% |
| Rate People Exit from ES, SH, TH, and RRH to PH | N/A | 45.5% | 41.4% | 31.9% | 27.1% | -4.8% | N/A |
| Rate People in PSH and OPH Retain or Exit to PH | N/A | 93.0% | 90.9% | 87.0% | 87.4% | 0.4% | N/A |

Housing Inventory Count Summary

| | 2014 | 2015 | 2016 | 2017 | 2018 | 2017-18 Change | % Change |
|------------------------------------|------|------|------|------|------|----------------|----------|
| Emergency Shelter (ES) | 523 | 526 | 445 | 451 | 228 | -223 | -49% |
| Safe Haven (SH) | -- | -- | -- | -- | 190 | -- | -- |
| Transitional Housing (TH) | 404 | 401 | 451 | 550 | 484 | -66 | -12% |
| Permanent Supportive Housing (PSH) | 483 | 479 | 503 | 511 | 568 | 57 | 11% |
| Rapid Re-Housing (RRH) | -- | -- | 21 | 14 | 24 | 10 | 71% |

Award Summary

| | 2014 | 2015 | 2016 | 2017 | 2018 | 2017-18 Change | % Change |
|---|-------------|-------------|-------------|-------------|-------------|----------------|----------|
| Continuum of Care (CoC) | \$1,613,494 | \$1,575,244 | \$1,703,062 | \$1,707,408 | \$1,625,336 | (\$82,072) | -5% |
| Emergency Solutions Grants (ESG) | \$152,155 | \$163,810 | \$173,783 | \$175,499 | \$173,881 | (\$1,618) | -1% |