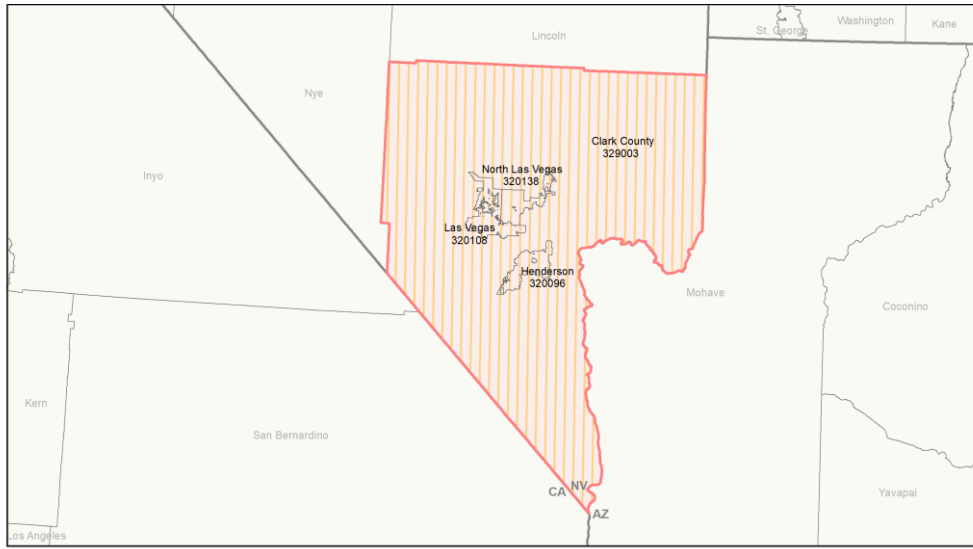
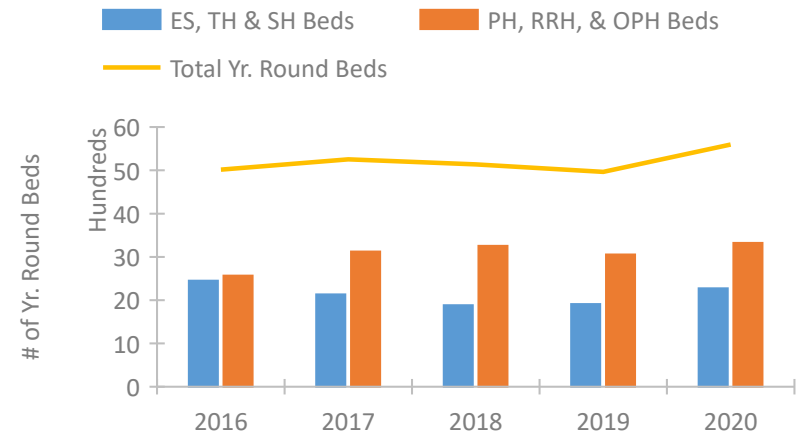


CoC Performance Profile NV-500 Las Vegas/Clark County CoC

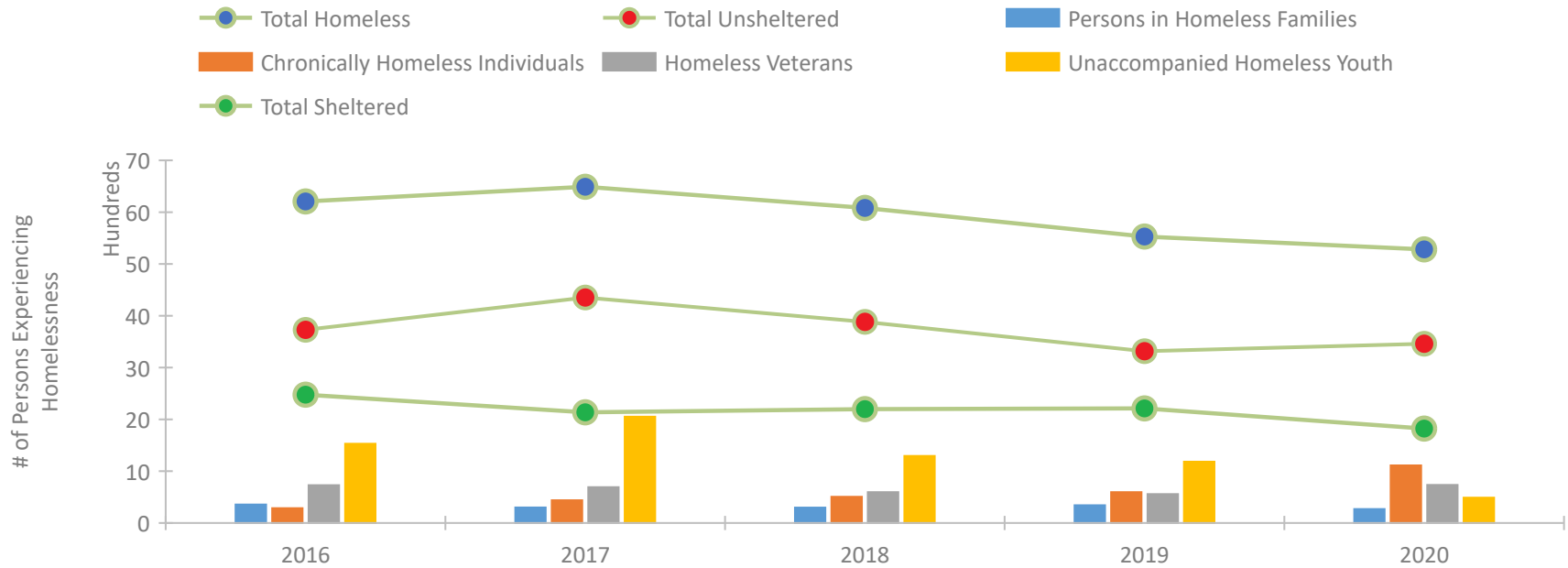


2020 CoC Boundary 2019 CoC Boundary

Housing Inventory Count by Program Type

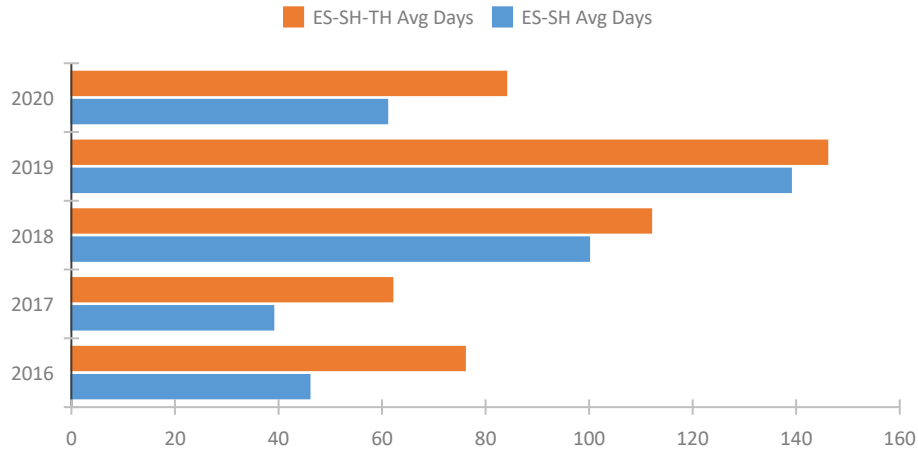


Homeless Population – Point-in-Time (PIT) Count

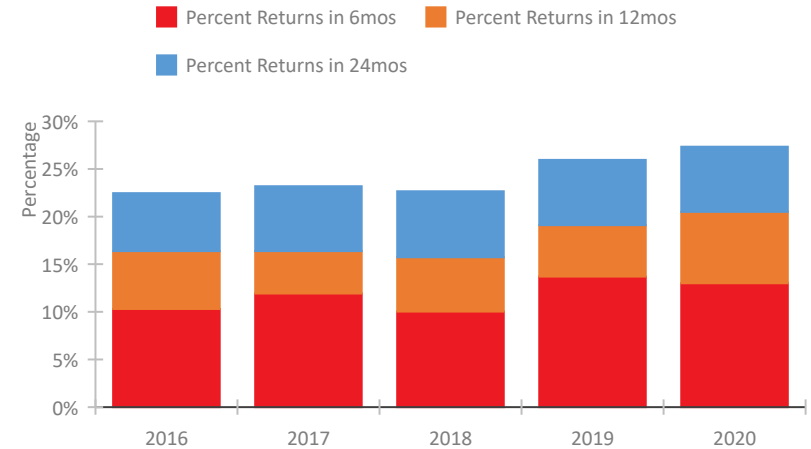


CoC Performance Profile NV-500 Las Vegas/Clark County CoC

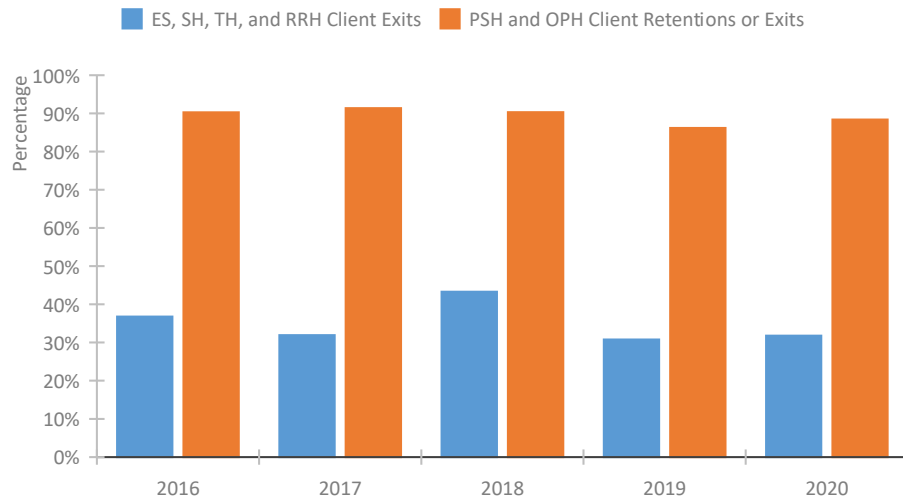
Length of Time Homeless



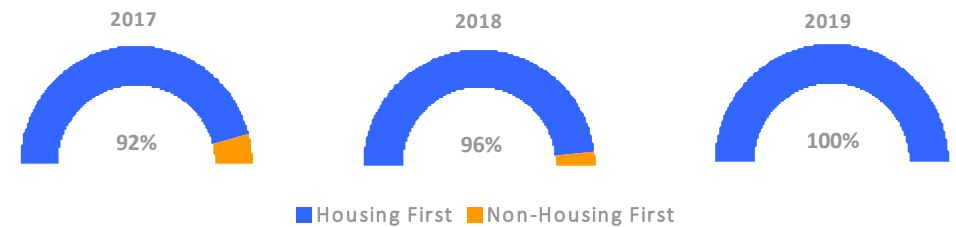
Returns to Homelessness Over Time



Exits to Permanent Housing by Program Type



Proportion of Housing First Projects by Year*



Number of Projects by Year			
	2017	2018	2019
Housing First Projects	24	27	23
Non-Housing First Projects	2	1	0

*In 2020 HUD awarded renewal projects noncompetitively, therefore no new data was collected and Housing First data remains the same from 2019 to 2020.

Data Summary: NV-500 Las Vegas/Clark County CoC

Point-In-Time Count Summary

	2016	2017	2018	2019	2020	2019-20 Change	% Change
Number of Sheltered Persons in Families	346	292	264	317	256	-61	-19%
Number of Unsheltered Persons in Families	11	8	33	25	14	-11	-44%
Number of Sheltered Individuals	2,131	1,845	1,935	1,896	1,566	-330	-17%
Number of Unsheltered Individuals	3,720	4,345	3,851	3,292	3,447	155	5%
Total Homeless Persons	6,208	6,490	6,083	5,530	5,283	-247	-4%
Number of Sheltered Families	114	108	95	112	82	-30	-27%
Number of Unsheltered Families	4	3	11	7	5	-2	-29%
Number of Total Families	118	111	106	119	87	-32	-27%
Sheltered Chronically Homeless Individuals	32	84	189	442	300	-142	-32%
Unsheltered Chronically Homeless Individuals	253	356	316	154	812	658	427%
Total Chronically Homeless Individuals	285	440	505	596	1,112	516	87%
Sheltered Veterans	328	367	429	418	398	-20	-5%
Unsheltered Veterans	402	324	165	139	336	197	142%
Total Veterans	730	691	594	557	734	177	32%
Sheltered Unaccompanied Youth (up to 24)	215	152	150	205	193	-12	-6%
Unsheltered Unaccompanied Youth (up to 24)	1,316	1,900	1,145	979	296	-683	-70%
Total Unaccompanied Youth (up to 24)	1,531	2,052	1,295	1,184	489	-695	-59%

System Performance Measures Summary

	2016	2017	2018	2018	2020	2019-20 Change	% Change
Average Length of Time Homeless (days)	76	62	112	146	84	-62	-42.5%
Rate People Return to Homelessness in 6 Months	10.3%	11.9%	10.0%	13.7%	13.0%	-0.7%	N/A
Number of People who are Homeless for the First Time	7,464	8,382	7,389	7,837	4,975	-2,862	-36.5%
Rate People Exit from ES, SH, TH, and RRH to PH	36.8%	31.9%	43.3%	30.8%	31.8%	1%	N/A
Rate People in PSH and OPH Retain or Exit to PH	90.3%	91.4%	90.3%	86.2%	88.4%	2.2%	N/A

Housing Inventory Count Summary

	2016	2017	2018	2019	2020	2019-20 Change	% Change
Emergency Shelter (ES)	1,602	1,395	1,290	1,306	1,563	257	20%
Safe Haven (SH)	25	25	25	25	25	0	-0%
Transitional Housing (TH)	824	711	568	578	687	109	19%
Permanent Supportive Housing (PSH)	2,066	2,440	2,562	2,484	2,284	-200	-8%
Rapid Re-Housing (RRH)	500	684	662	539	1,006	467	87%
Other Permanent Housing (OPH)	--	--	31	31	33	2	6%

Award Summary

	2016	2017	2018	2019	2020	2019-20 Change	% Change
Continuum of Care (CoC)	\$13,484,302	\$13,597,125	\$14,236,132	\$13,540,428	\$14,901,170	\$1,360,742	10%
Emergency Solutions Grants (ESG)	\$1,196,693	\$1,203,117	\$1,207,714	\$1,264,092	\$1,290,875	\$26,783	2%