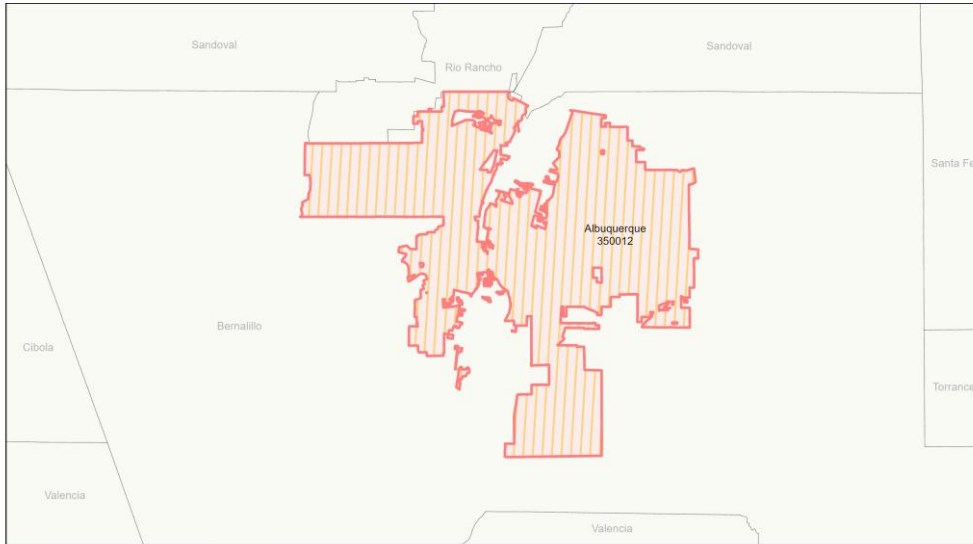


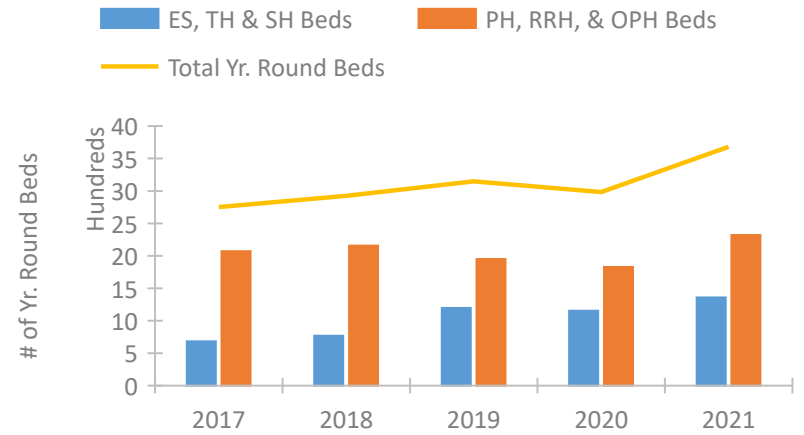
CoC Performance Profile NM-500

Albuquerque CoC

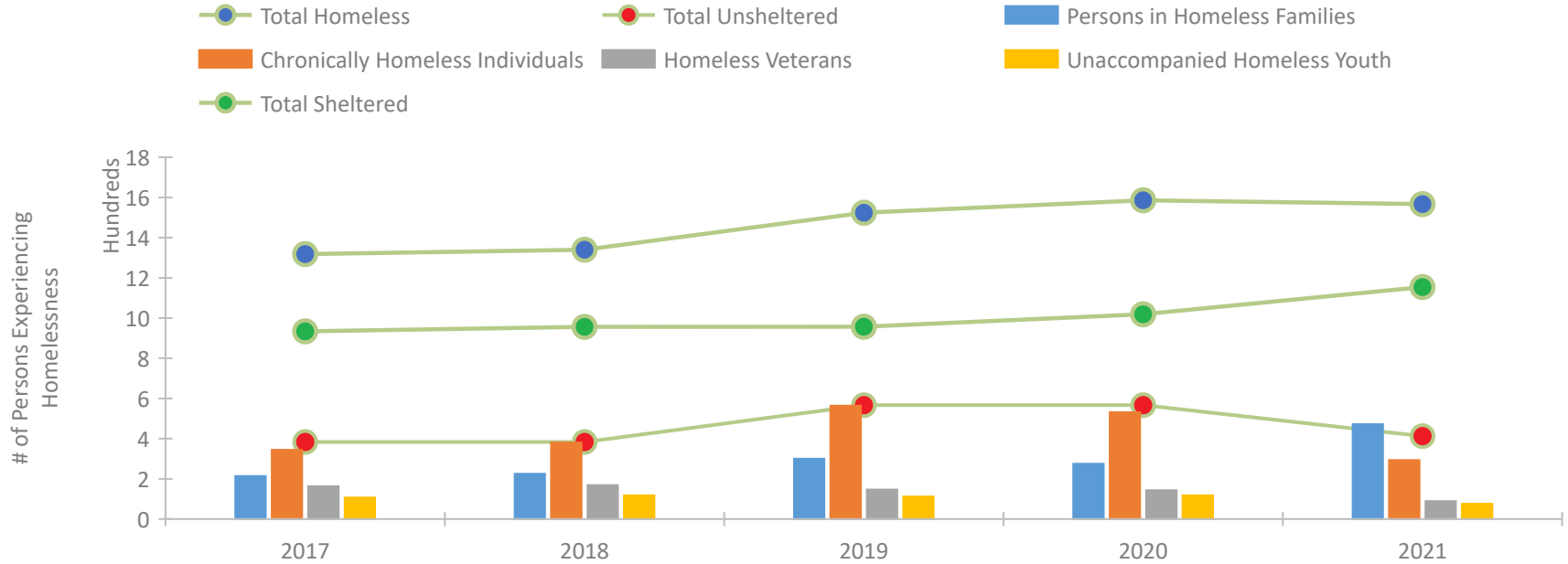


2021 CoC Boundary 2020 CoC Boundary

Housing Inventory Count by Program Type



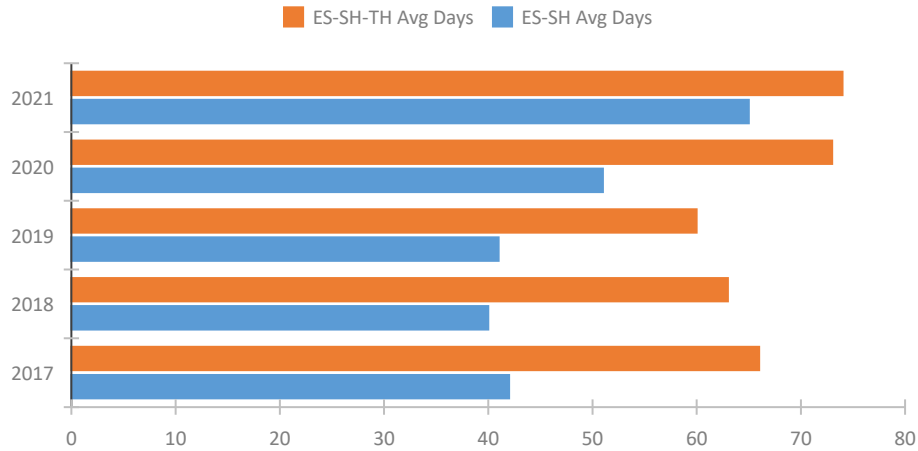
Homeless Population – Point-in-Time (PIT) Count*



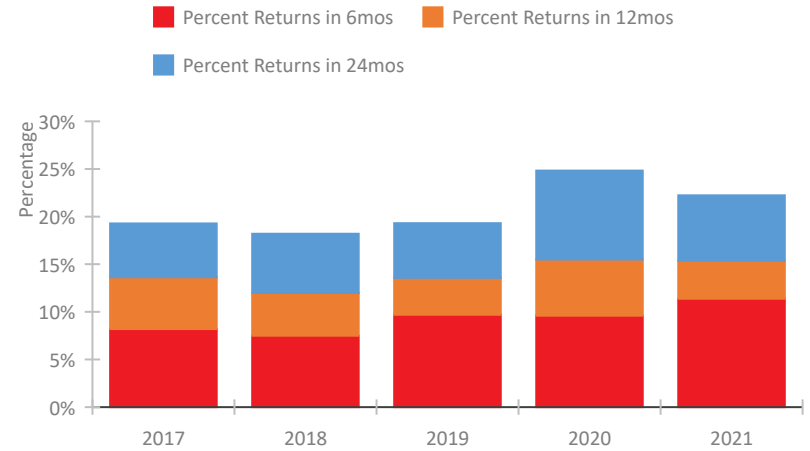
*In 2021, HUD gave communities the option to cancel or modify the unsheltered survey portion of their counts based on the potential risk of COVID-19 transmission associated with conducting an in-person survey. As a result, HUD has excluded the unsheltered population sub-totals and all unsheltered sub-population data for this reporting period. The user is cautioned that the unsheltered and total homeless counts reported here may be missing data.

CoC Performance Profile NM-500 Albuquerque CoC

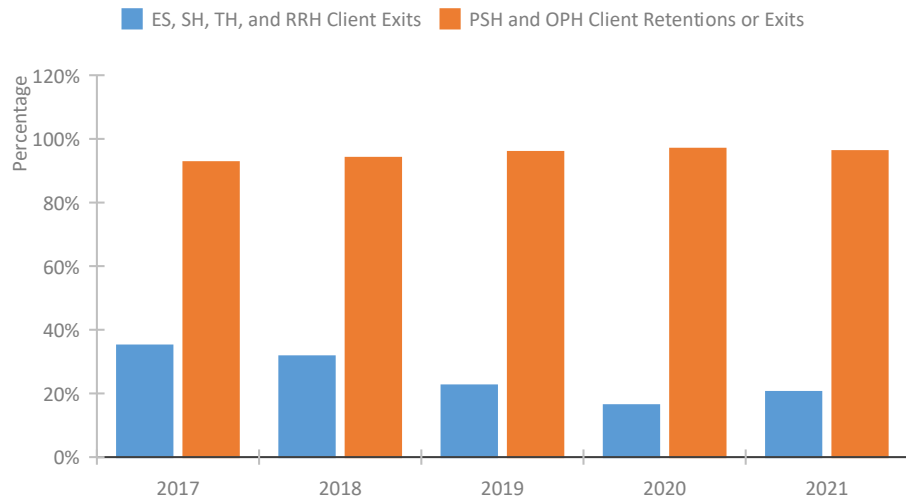
Length of Time Homeless



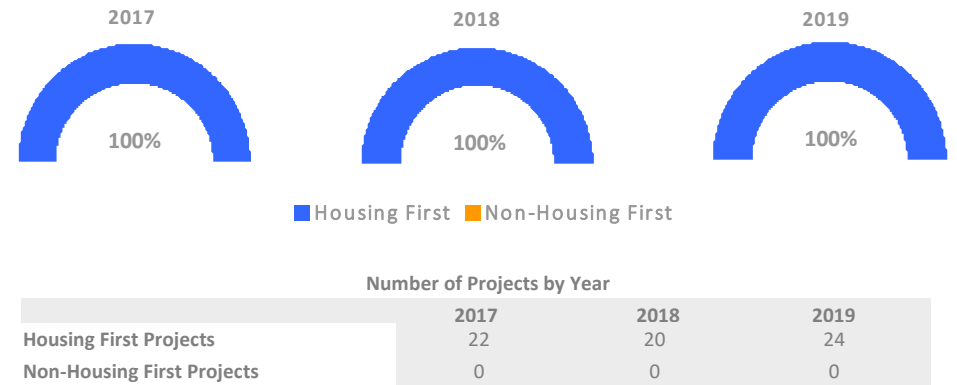
Returns to Homelessness Over Time



Exits to Permanent Housing by Program Type



Proportion of Housing First Projects by Year†



†2021 Data unavailable at the time of report publication. In 2020 HUD awarded renewal projects noncompetitively, therefore no new data was collected and Housing First data remains the same from 2019 to 2020.

Data Summary: NM-500 Albuquerque CoC

Point-In-Time Count Summary*

	2017	2018	2019	2020	2021	2020-21 Change	% Change
Number of Sheltered Persons in Families	198	209	280	255	472	217	85%
Number of Unsheltered Persons in Families	16	16	20	20	--	--	--
Number of Sheltered Individuals	736	747	677	764	682	-82	-11%
Number of Unsheltered Individuals	368	368	547	547	--	--	--
Total Homeless Persons	1,318	1,340	1,524	1,586	1,154	-432	-27%
Number of Sheltered Families	56	64	88	86	123	37	43%
Number of Unsheltered Families	5	5	5	5	--	--	--
Number of Total Families	61	69	93	91	123	32	35%
Sheltered Chronically Homeless Individuals	183	220	237	204	293	89	44%
Unsheltered Chronically Homeless Individuals	161	161	327	327	--	--	--
Total Chronically Homeless Individuals	344	381	564	531	293	-238	-45%
Sheltered Veterans	122	128	91	87	89	2	2%
Unsheltered Veterans	41	41	56	56	--	--	--
Total Veterans	163	169	147	143	89	-54	-38%
Sheltered Unaccompanied Youth (up to 24)	81	92	65	71	76	5	7%
Unsheltered Unaccompanied Youth (up to 24)	26	26	47	47	--	--	--
Total Unaccompanied Youth (up to 24)	107	118	112	118	76	-42	-36%

System Performance Measures Summary

	2017	2018	2019	2020	2021	2020-21 Change	% Change
Average Length of Time Homeless (days)	66	63	60	73	74	1	1.4%
Rate People Return to Homelessness in 6 Months	8.2%	7.5%	9.7%	9.6%	11.4%	1.8%	N/A
Number of People who are Homeless for the First Time	2,622	2,383	3,714	3,201	3,325	124	3.9%
Rate People Exit from ES, SH, TH, and RRH to PH	35.0%	31.7%	22.5%	16.3%	20.4%	4.1%	N/A
Rate People in PSH and OPH Retain or Exit to PH	92.6%	94.0%	95.9%	96.9%	96.1%	-0.8%	N/A

Housing Inventory Count Summary

	2017	2018	2019	2020	2021	2020-21 Change	% Change
Emergency Shelter (ES)	372	384	854	693	825	132	19%
Transitional Housing (TH)	310	385	344	461	535	74	16%
Permanent Supportive Housing (PSH)	1,557	1,562	1,382	1,255	1,444	189	15%
Rapid Re-Housing (RRH)	514	479	472	457	760	303	66%
Other Permanent Housing (OPH)	--	116	96	116	116	0	0%

Award Summary

	2017	2018	2019	2020	2021	2020-21 Change	% Change
Continuum of Care (CoC)	\$5,601,571	\$5,572,933	\$5,567,279	\$5,828,695	\$6,068,865	\$240,170	4%
Emergency Solutions Grants (ESG)	\$350,052	\$357,711	\$378,448	\$395,622	\$388,357	(\$7,265)	-2%

*In 2021, HUD gave communities the option to cancel or modify the unsheltered survey portion of their counts based on the potential risk of COVID-19 transmission associated with conducting an in-person survey. As a result, HUD has excluded the unsheltered population sub-totals and all unsheltered sub-population data for this reporting period. The user is cautioned that the unsheltered and total homeless counts reported here may be missing data.