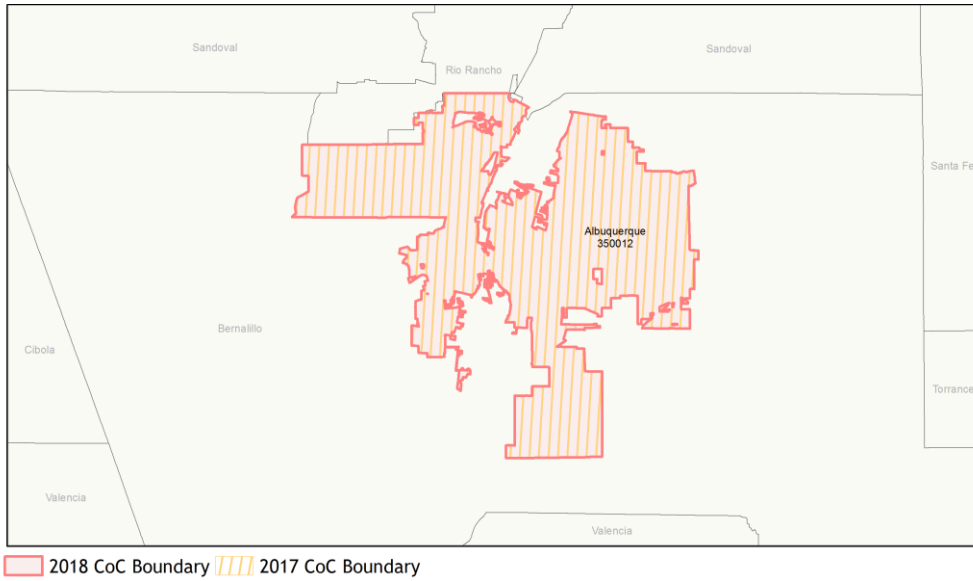
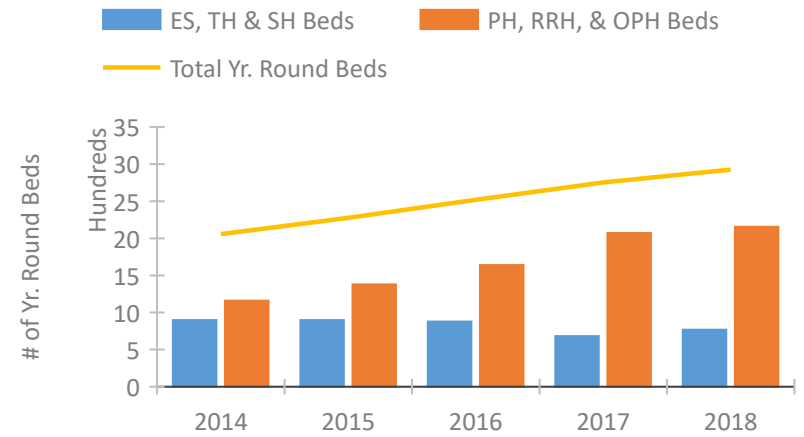


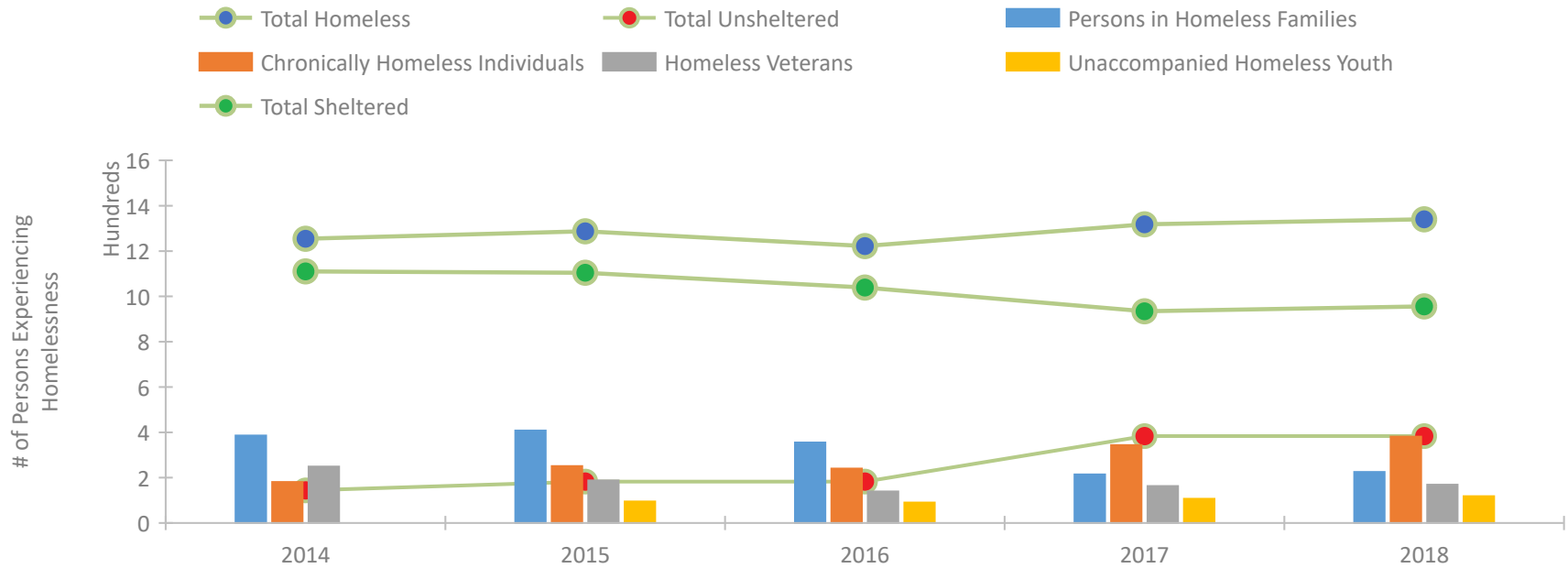
## CoC Performance Profile NM-500 Albuquerque CoC



### Housing Inventory Count by Program Type

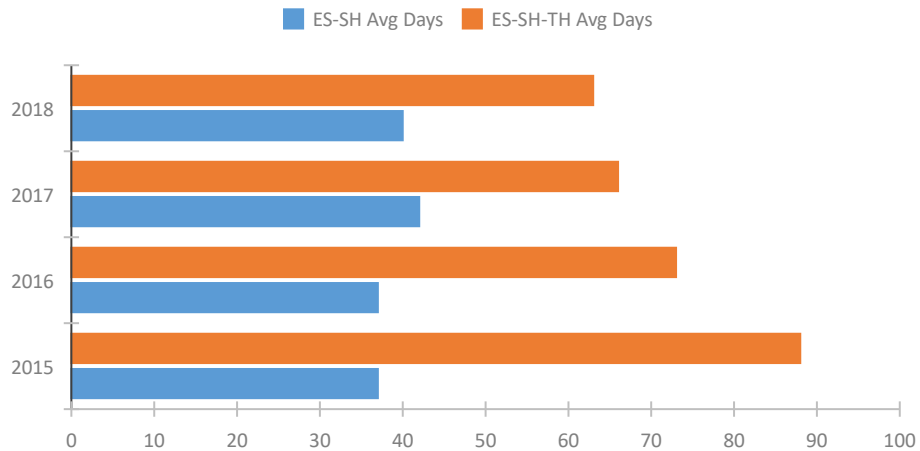


### Homeless Population – Point-in-Time (PIT) Count

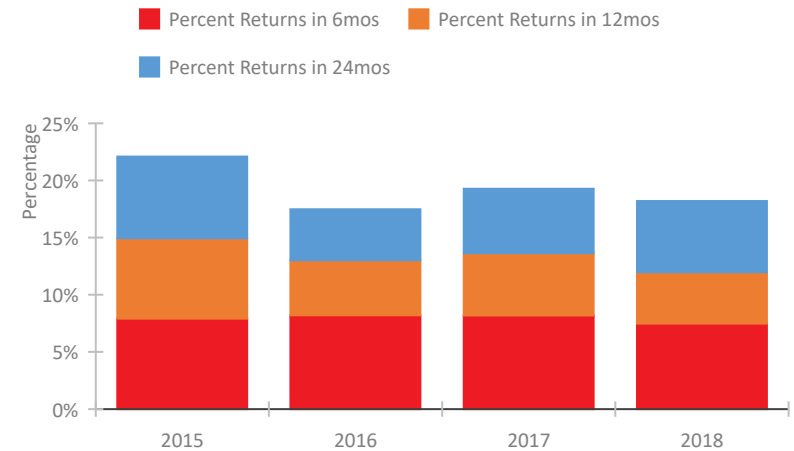


## CoC Performance Profile NM-500 Albuquerque CoC

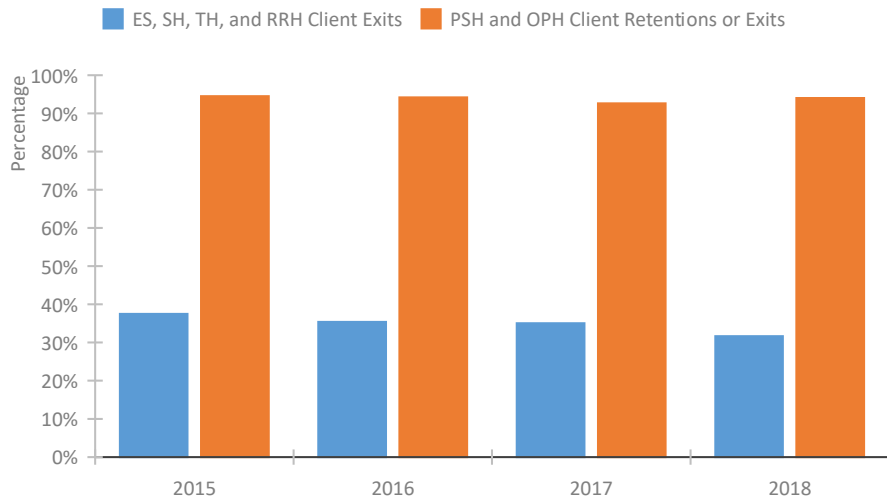
### Length of Time Homeless



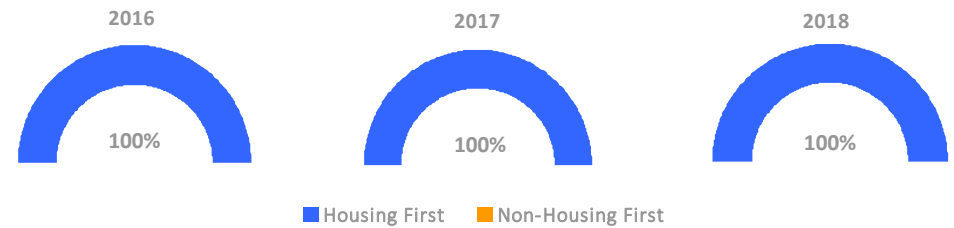
### Returns to Homelessness Over Time



### Exits to Permanent Housing by Program Type



### Proportion of Housing First Projects by Year



### Number of Projects by Year

	2016	2017	2018
Housing First Projects	24	22	20
Non-Housing First Projects	0	0	0

## Data Summary: NM-500 Albuquerque CoC

### Point-In-Time Count Summary

	2014	2015	2016	2017	2018	2017-18 Change	% Change
Number of Sheltered Persons in Families	384	399	346	198	209	11	6%
Number of Unsheltered Persons in Families	2	9	9	16	16	0	0%
Number of Sheltered Individuals	726	705	693	736	747	11	1%
Number of Unsheltered Individuals	142	174	174	368	368	0	0%
<b>Total Homeless Persons</b>	<b>1,254</b>	<b>1,287</b>	<b>1,222</b>	<b>1,318</b>	<b>1,340</b>	<b>22</b>	<b>2%</b>
Number of Sheltered Families	123	119	106	56	64	8	14%
Number of Unsheltered Families	1	2	2	5	5	0	0%
<b>Number of Total Families</b>	<b>124</b>	<b>121</b>	<b>108</b>	<b>61</b>	<b>69</b>	<b>8</b>	<b>13%</b>
Sheltered Chronically Homeless Individuals	116	161	150	183	220	37	20%
Unsheltered Chronically Homeless Individuals	65	90	90	161	161	0	0%
<b>Total Chronically Homeless Individuals</b>	<b>181</b>	<b>251</b>	<b>240</b>	<b>344</b>	<b>381</b>	<b>37</b>	<b>11%</b>
Sheltered Veterans	224	172	123	122	128	6	5%
Unsheltered Veterans	25	16	16	41	41	0	0%
<b>Total Veterans</b>	<b>249</b>	<b>188</b>	<b>139</b>	<b>163</b>	<b>169</b>	<b>6</b>	<b>4%</b>
Sheltered Unaccompanied Youth (up to 24)	--	85	80	81	92	11	14%
Unsheltered Unaccompanied Youth (up to 24)	--	10	10	26	26	0	0%
<b>Total Unaccompanied Youth (up to 24)</b>	<b>--</b>	<b>95</b>	<b>90</b>	<b>107</b>	<b>118</b>	<b>11</b>	<b>10%</b>

### System Performance Measures Summary

	2014	2015	2016	2017	2018	2017-18 Change	% Change
Average Length of Time Homeless (days)	N/A	88	73	66	63	-3	-4.5%
Rate People Return to Homelessness in 6 Months	N/A	7.9%	8.2%	8.2%	7.5%	-0.7%	N/A
Number of People who are Homeless for the First Time	N/A	2762	2798	2622	2383	-239	-9.1%
Rate People Exit from ES, SH, TH, and RRH to PH	N/A	37.5%	35.4%	35.0%	31.7%	-3.4%	N/A
Rate People in PSH and OPH Retain or Exit to PH	N/A	94.5%	94.2%	92.6%	94.0%	1.4%	N/A

### Housing Inventory Count Summary

	2014	2015	2016	2017	2018	2017-18 Change	% Change
Emergency Shelter (ES)	369	378	367	372	384	12	3%
Transitional Housing (TH)	529	520	512	310	385	75	24%
Permanent Supportive Housing (PSH)	1,087	1,234	1,407	1,557	1,562	5	0%
Rapid Re-Housing (RRH)	72	144	233	514	479	-35	-7%
Other Permanent Housing (OPH)	--	--	--	--	116	--	--

### Award Summary

	2014	2015	2016	2017	2018	2017-18 Change	% Change
<b>Continuum of Care (CoC)</b>	\$5,113,012	\$5,681,370	\$5,794,442	\$5,601,571	\$5,572,933	(\$28,638)	-1%
<b>Emergency Solutions Grants (ESG)</b>	\$319,017	\$349,238	\$347,265	\$350,052	\$357,711	\$7,659	2%