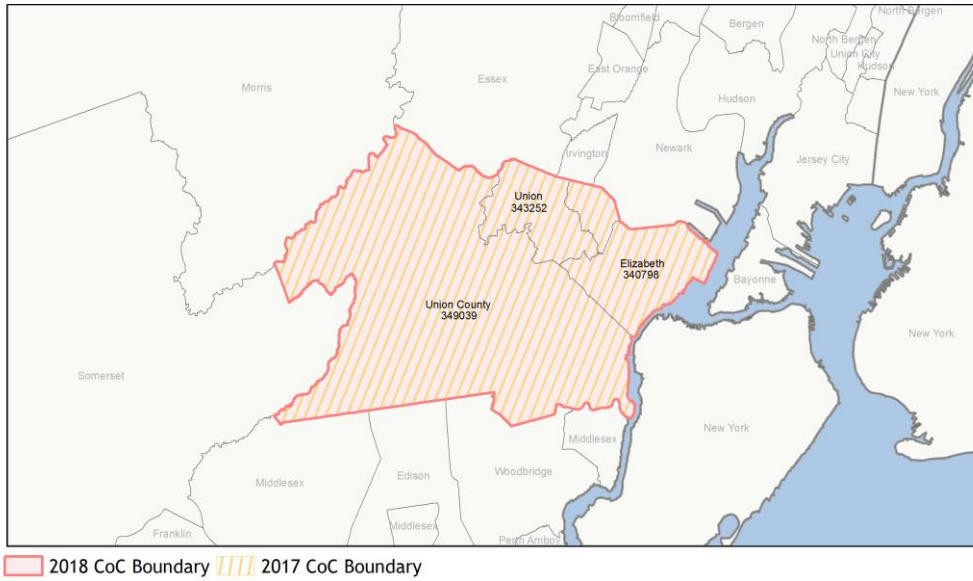
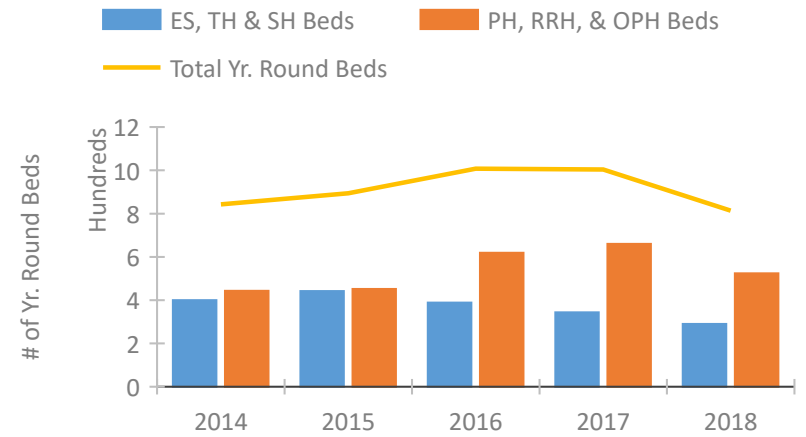


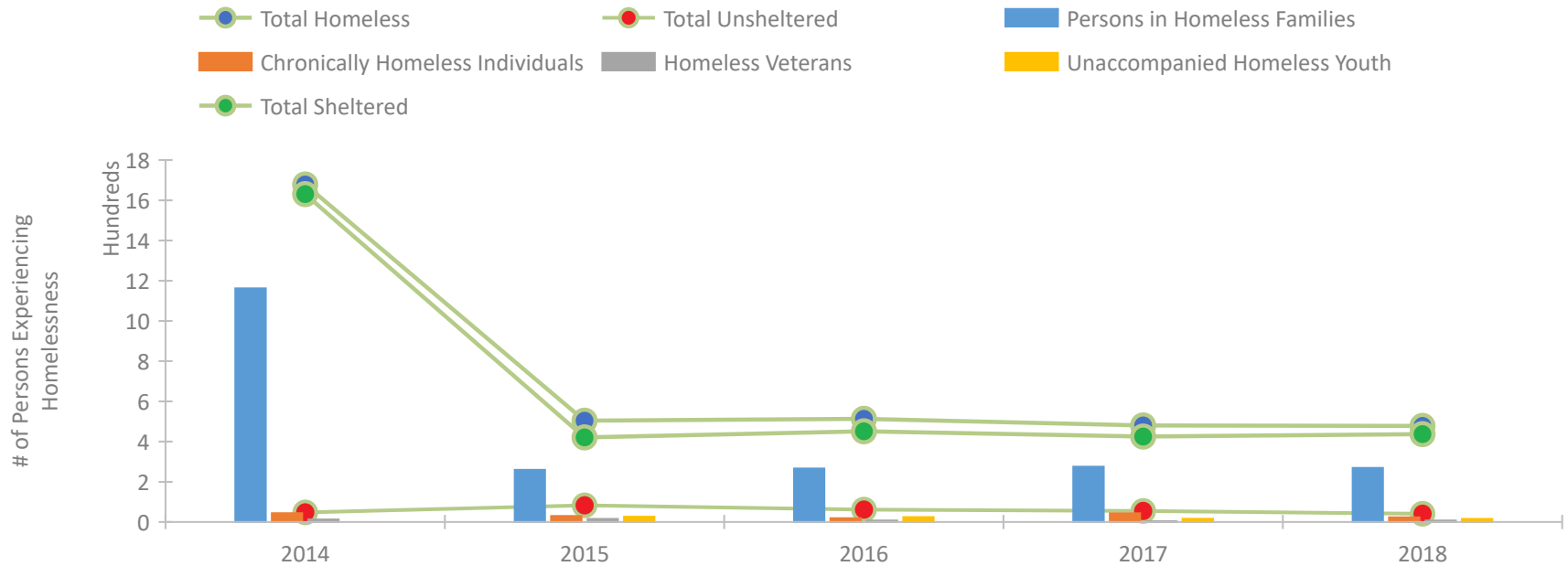
CoC Performance Profile NJ-515 Elizabeth/Union County CoC



Housing Inventory Count by Program Type

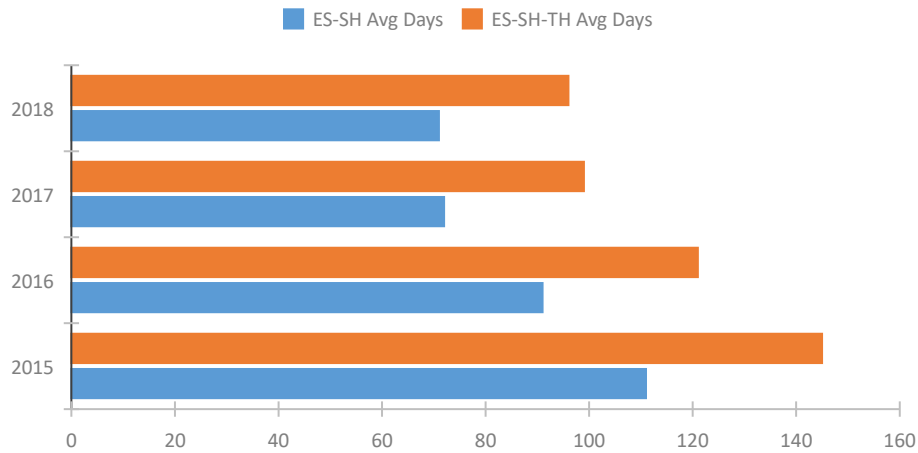


Homeless Population – Point-in-Time (PIT) Count

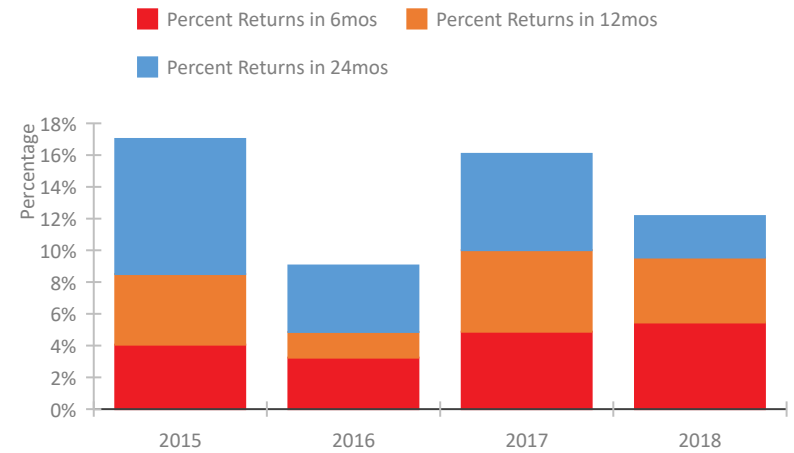


CoC Performance Profile NJ-515 Elizabeth/Union County CoC

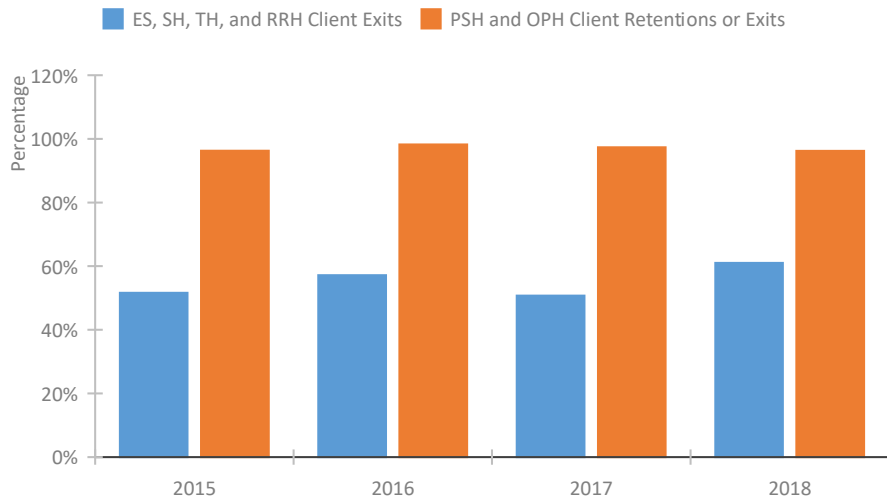
Length of Time Homeless



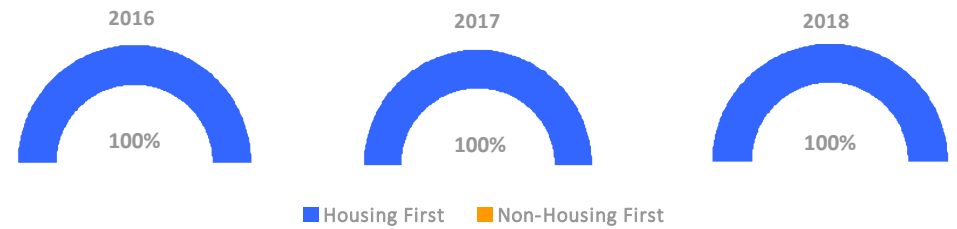
Returns to Homelessness Over Time



Exits to Permanent Housing by Program Type



Proportion of Housing First Projects by Year



Number of Projects by Year

	2016	2017	2018
Housing First Projects	18	18	19
Non-Housing First Projects	0	0	0

Data Summary: NJ-515 Elizabeth/Union County CoC

Point-In-Time Count Summary

	2014	2015	2016	2017	2018	2017-18 Change	% Change
Number of Sheltered Persons in Families	1,160	207	253	270	258	-12	-4%
Number of Unsheltered Persons in Families	2	52	13	5	11	6	120%
Number of Sheltered Individuals	471	214	198	155	179	24	15%
Number of Unsheltered Individuals	46	31	49	50	30	-20	-40%
Total Homeless Persons	1,679	504	513	480	478	-2	0%
Number of Sheltered Families	352	64	88	89	85	-4	-4%
Number of Unsheltered Families	1	11	4	2	3	1	50%
Number of Total Families	353	75	92	91	88	-3	-3%
Sheltered Chronically Homeless Individuals	23	19	10	25	18	-7	-28%
Unsheltered Chronically Homeless Individuals	21	11	9	18	5	-13	-72%
Total Chronically Homeless Individuals	44	30	19	43	23	-20	-47%
Sheltered Veterans	11	14	7	3	6	3	100%
Unsheltered Veterans	2	1	0	0	1	1	100%
Total Veterans	13	15	7	3	7	4	133%
Sheltered Unaccompanied Youth (up to 24)	--	24	23	13	14	1	8%
Unsheltered Unaccompanied Youth (up to 24)	--	2	1	3	1	-2	-67%
Total Unaccompanied Youth (up to 24)	--	26	24	16	15	-1	-6%

System Performance Measures Summary

	2014	2015	2016	2017	2018	2017-18 Change	% Change
Average Length of Time Homeless (days)	N/A	145	121	99	96	-3	-3%
Rate People Return to Homelessness in 6 Months	N/A	4.1%	3.2%	4.9%	5.5%	0.6%	N/A
Number of People who are Homeless for the First Time	N/A	1013	1203	1322	1271	-51	-3.9%
Rate People Exit from ES, SH, TH, and RRH to PH	N/A	51.6%	57.1%	50.7%	61.0%	10.3%	N/A
Rate People in PSH and OPH Retain or Exit to PH	N/A	96.3%	98.2%	97.4%	96.2%	-1.1%	N/A

Housing Inventory Count Summary

	2014	2015	2016	2017	2018	2017-18 Change	% Change
Emergency Shelter (ES)	262	266	257	205	165	-40	-20%
Transitional Housing (TH)	138	176	132	139	125	-14	-10%
Permanent Supportive Housing (PSH)	443	452	420	466	445	-21	-5%
Rapid Re-Housing (RRH)	--	--	21	194	79	-115	-59%

Award Summary

	2014	2015	2016	2017	2018	2017-18 Change	% Change
Continuum of Care (CoC)	\$4,498,918	\$4,467,480	\$4,598,725	\$4,256,465	\$4,321,987	\$65,522	2%
Emergency Solutions Grants (ESG)	\$509,093	\$568,699	\$573,798	\$649,775	\$526,308	(\$123,467)	-19%