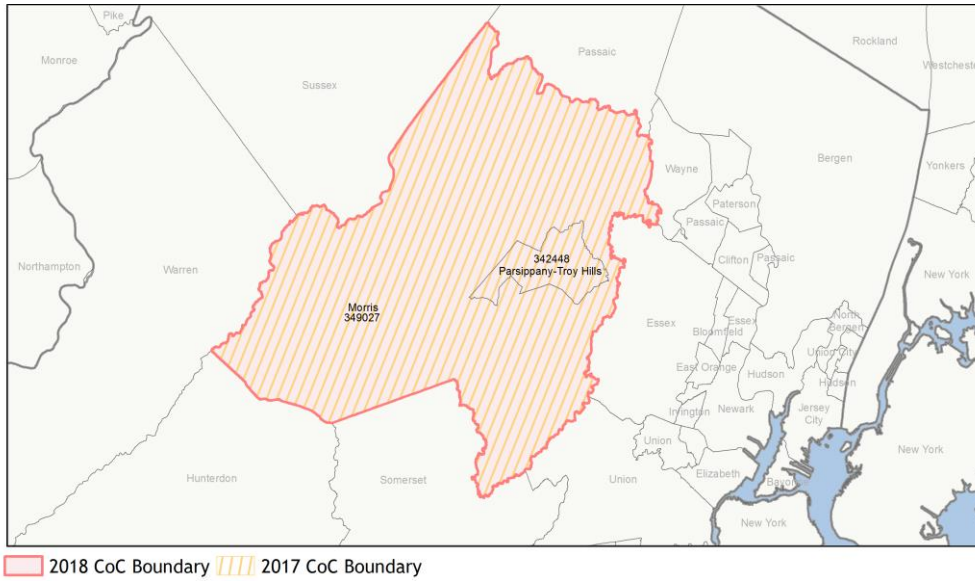
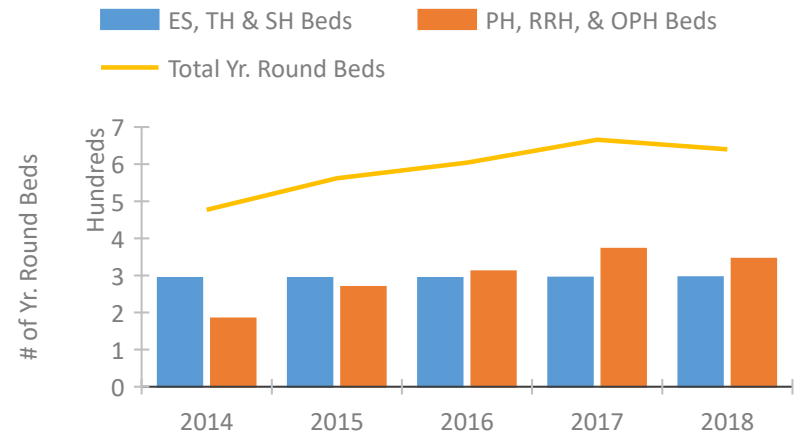


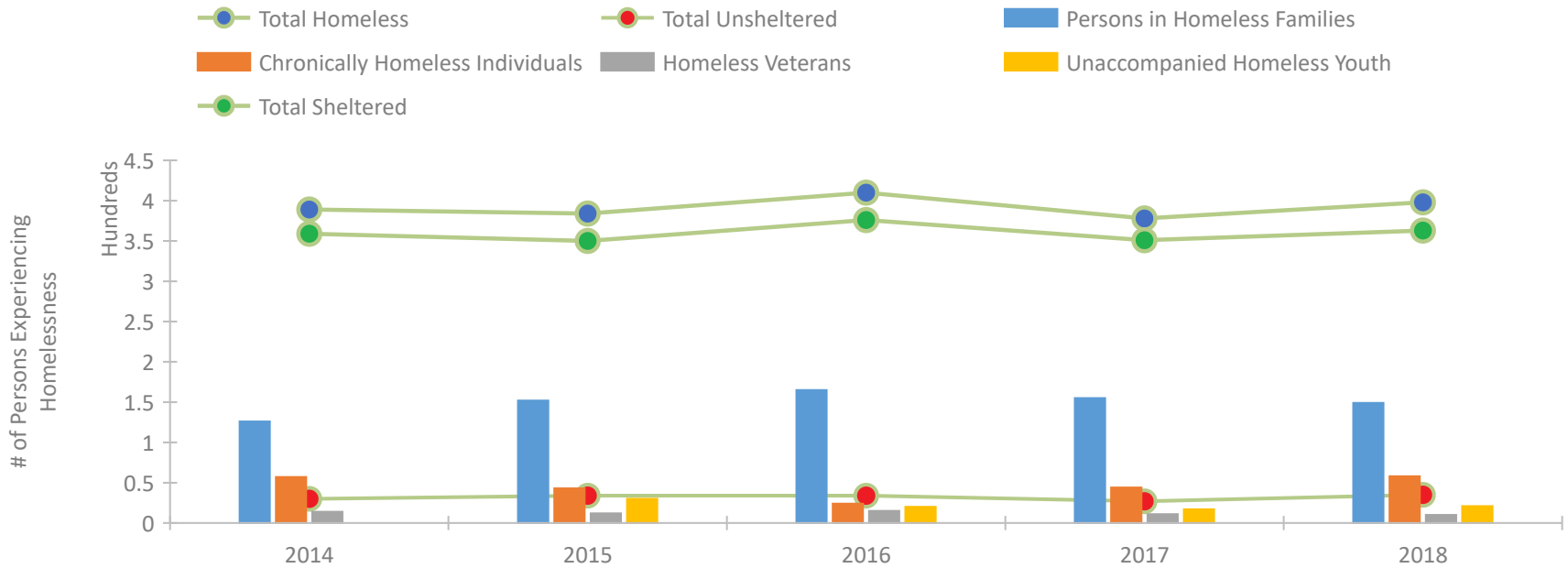
CoC Performance Profile NJ-509 Morris County CoC



Housing Inventory Count by Program Type

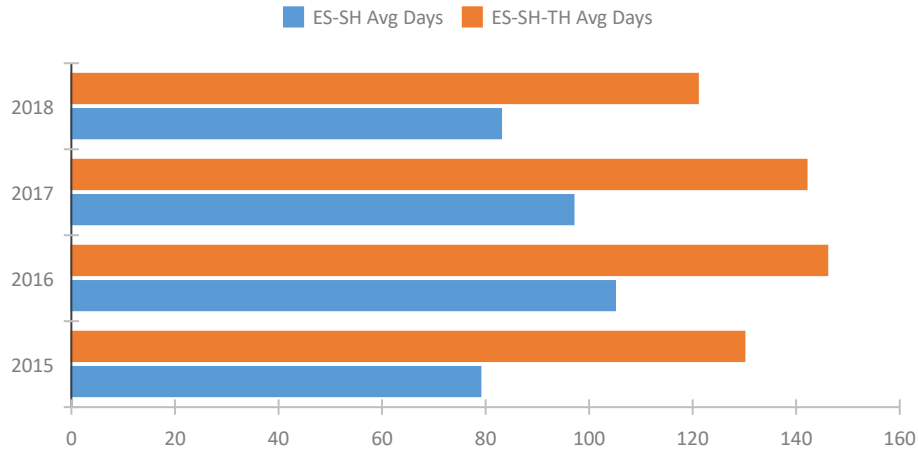


Homeless Population – Point-in-Time (PIT) Count

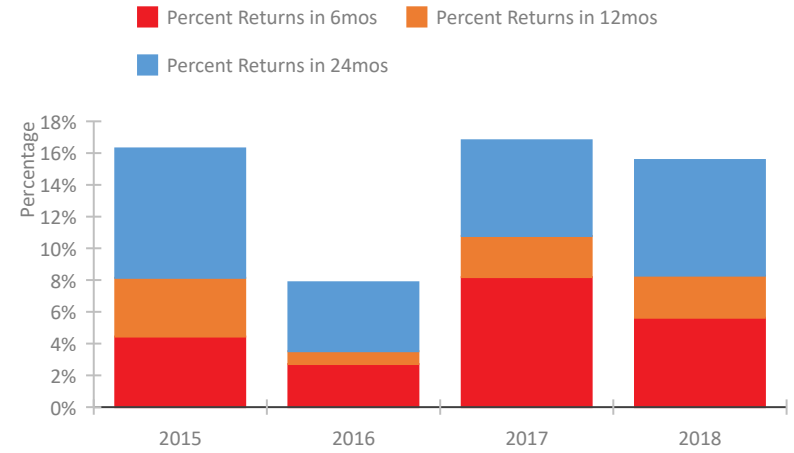


CoC Performance Profile NJ-509 Morris County CoC

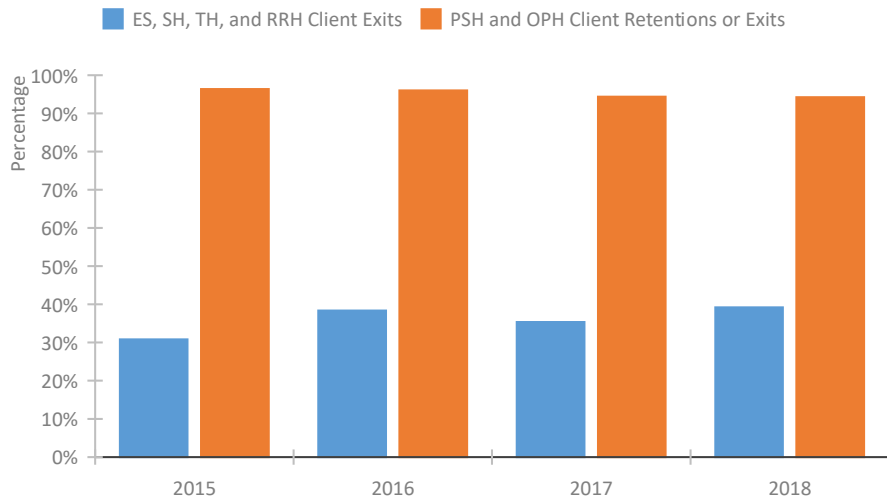
Length of Time Homeless



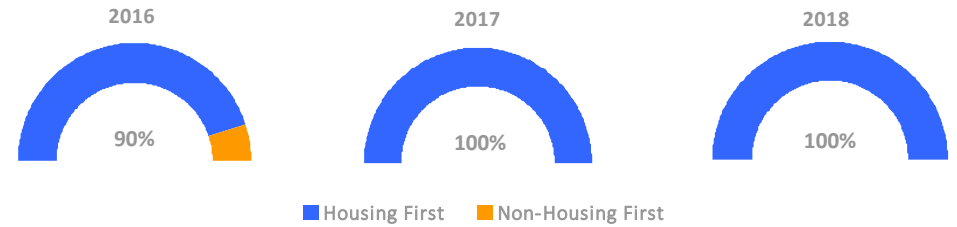
Returns to Homelessness Over Time



Exits to Permanent Housing by Program Type



Proportion of Housing First Projects by Year



Number of Projects by Year

	2016	2017	2018
Housing First Projects	9	11	12
Non-Housing First Projects	1	0	0

Data Summary: NJ-509 Morris County CoC

Point-In-Time Count Summary

	2014	2015	2016	2017	2018	2017-18 Change	% Change
Number of Sheltered Persons in Families	126	152	162	155	149	-6	-4%
Number of Unsheltered Persons in Families	0	0	3	0	0	0	--
Number of Sheltered Individuals	233	198	214	196	214	18	9%
Number of Unsheltered Individuals	30	34	31	27	35	8	30%
Total Homeless Persons	389	384	410	378	398	20	5%
Number of Sheltered Families	44	48	53	52	49	-3	-6%
Number of Unsheltered Families	0	0	1	0	0	0	--
Number of Total Families	44	48	54	52	49	-3	-6%
Sheltered Chronically Homeless Individuals	39	34	14	30	36	6	20%
Unsheltered Chronically Homeless Individuals	18	9	10	14	22	8	57%
Total Chronically Homeless Individuals	57	43	24	44	58	14	32%
Sheltered Veterans	12	10	14	9	9	0	0%
Unsheltered Veterans	2	2	1	2	1	-1	-50%
Total Veterans	14	12	15	11	10	-1	-9%
Sheltered Unaccompanied Youth (up to 24)	--	26	19	17	17	0	0%
Unsheltered Unaccompanied Youth (up to 24)	--	4	1	0	4	4	100%
Total Unaccompanied Youth (up to 24)	--	30	20	17	21	4	24%

System Performance Measures Summary

	2014	2015	2016	2017	2018	2017-18 Change	% Change
Average Length of Time Homeless (days)	N/A	130	146	142	121	-21	-14.8%
Rate People Return to Homelessness in 6 Months	N/A	4.4%	2.7%	8.2%	5.6%	-2.6%	N/A
Number of People who are Homeless for the First Time	N/A	560	677	790	866	76	9.6%
Rate People Exit from ES, SH, TH, and RRH to PH	N/A	30.8%	38.4%	35.4%	39.2%	3.9%	N/A
Rate People in PSH and OPH Retain or Exit to PH	N/A	96.4%	96.0%	94.4%	94.2%	-0.1%	N/A

Housing Inventory Count Summary

	2014	2015	2016	2017	2018	2017-18 Change	% Change
Emergency Shelter (ES)	132	132	132	132	132	0	0%
Safe Haven (SH)	20	20	20	20	20	0	0%
Transitional Housing (TH)	141	141	141	142	143	1	1%
Permanent Supportive Housing (PSH)	179	130	298	359	252	-107	-30%
Rapid Re-Housing (RRH)	5	20	13	13	17	4	31%
Other Permanent Housing (OPH)	--	119	--	--	76	--	--

Award Summary

	2014	2015	2016	2017	2018	2017-18 Change	% Change
Continuum of Care (CoC)	\$1,750,933	\$1,756,326	\$1,780,503	\$1,773,495	\$1,939,213	\$165,718	9%
Emergency Solutions Grants (ESG)	\$138,403	\$152,103	\$153,439	\$157,444	\$159,260	\$1,816	1%