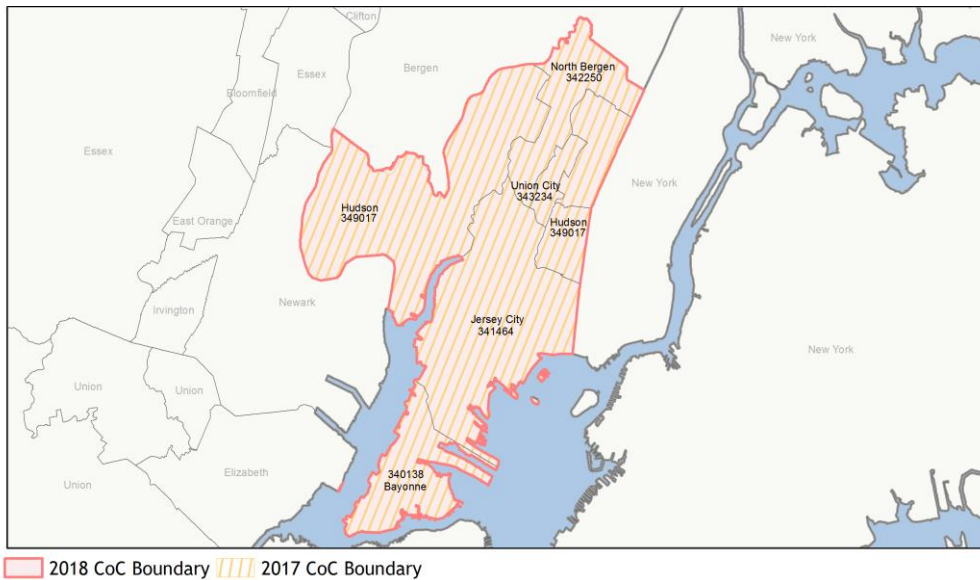
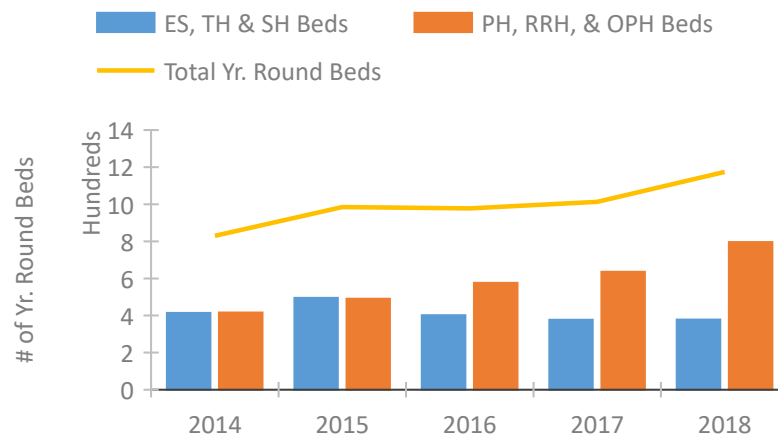


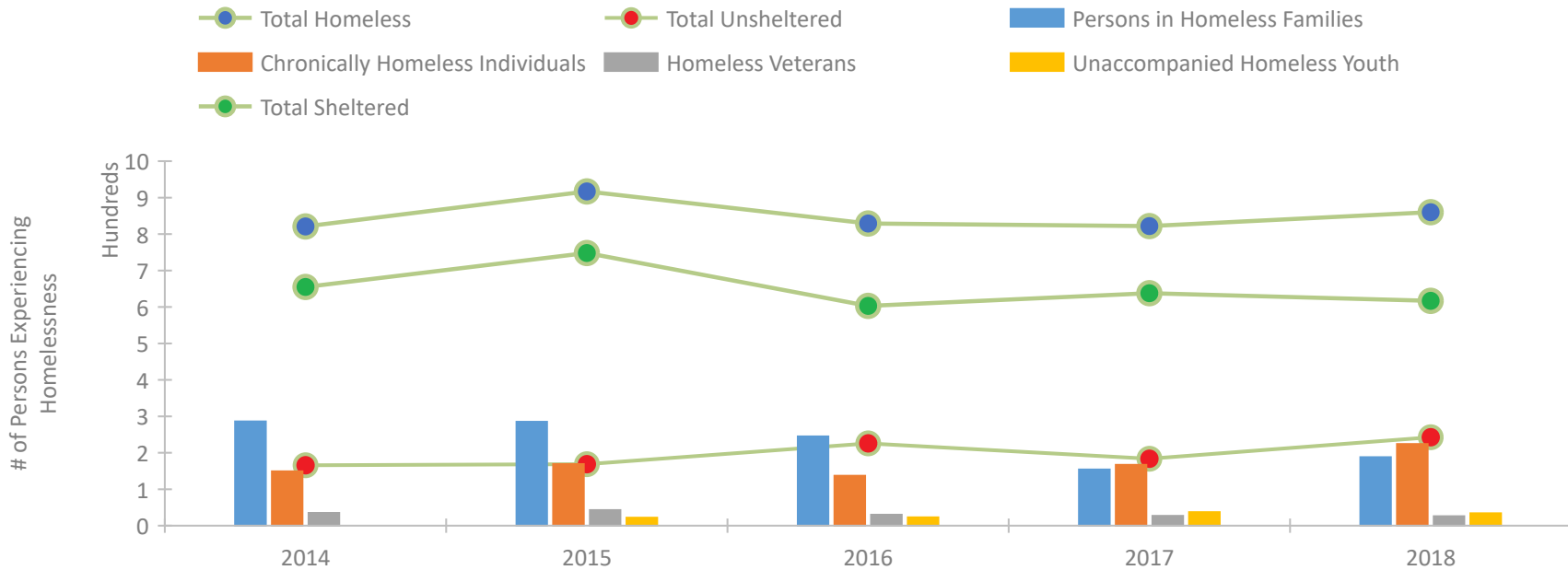
## CoC Performance Profile NJ-506 Jersey City, Bayonne/Hudson County CoC



### Housing Inventory Count by Program Type

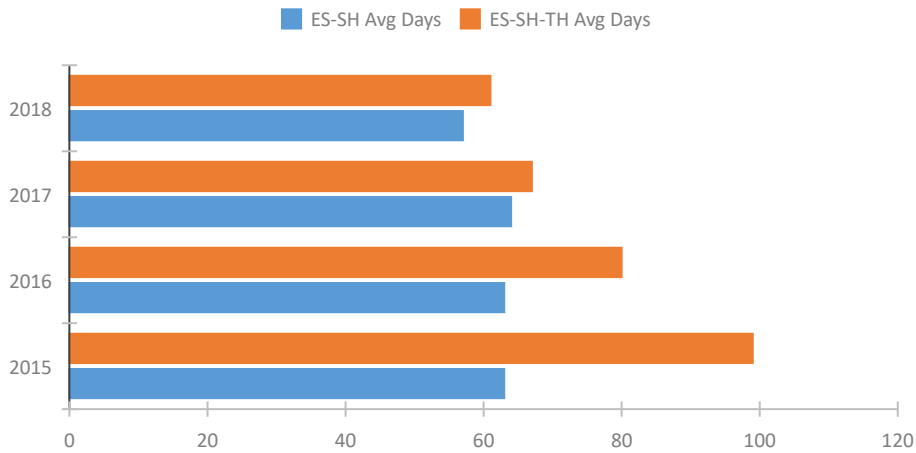


### Homeless Population – Point-in-Time (PIT) Count

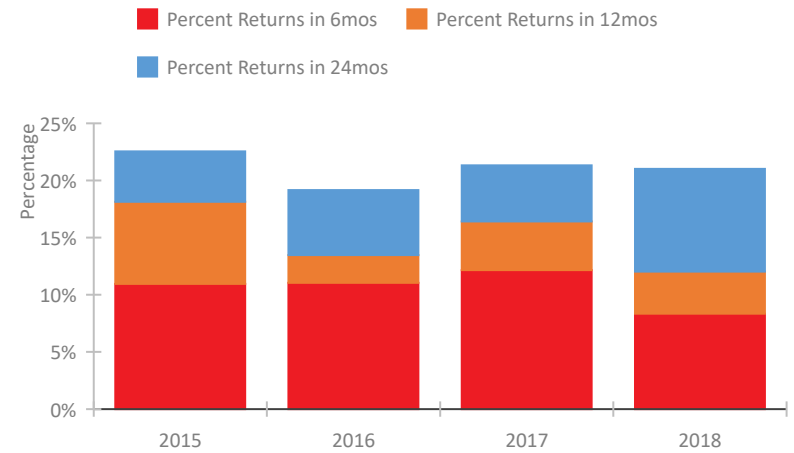


## CoC Performance Profile NJ-506 Jersey City, Bayonne/Hudson County CoC

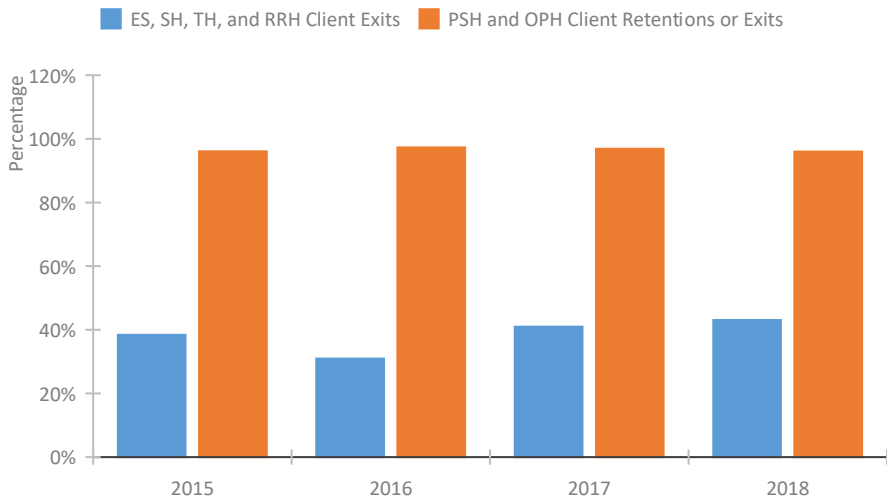
### Length of Time Homeless



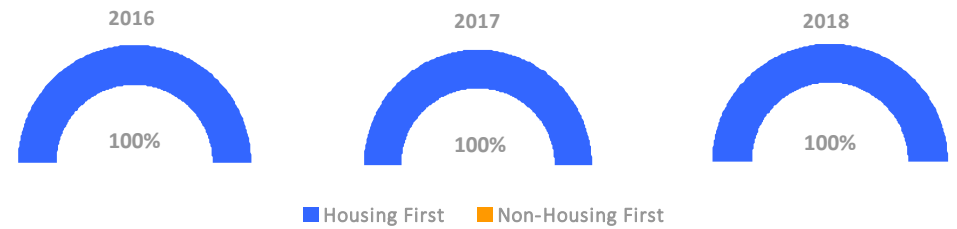
### Returns to Homelessness Over Time



### Exits to Permanent Housing by Program Type



### Proportion of Housing First Projects by Year



#### Number of Projects by Year

	2016	2017	2018
Housing First Projects	21	18	21
Non-Housing First Projects	0	0	0

## Data Summary: NJ-506 Jersey City, Bayonne/Hudson County CoC

### Point-In-Time Count Summary

	2014	2015	2016	2017	2018	2017-18 Change	% Change
Number of Sheltered Persons in Families	284	279	243	154	188	34	22%
Number of Unsheltered Persons in Families	2	6	2	0	0	0	--
Number of Sheltered Individuals	371	469	360	484	429	-55	-11%
Number of Unsheltered Individuals	164	163	224	184	243	59	32%
<b>Total Homeless Persons</b>	<b>821</b>	<b>917</b>	<b>829</b>	<b>822</b>	<b>860</b>	<b>38</b>	<b>5%</b>
Number of Sheltered Families	104	104	86	58	67	9	16%
Number of Unsheltered Families	1	2	1	0	0	0	--
<b>Number of Total Families</b>	<b>105</b>	<b>106</b>	<b>87</b>	<b>58</b>	<b>67</b>	<b>9</b>	<b>16%</b>
Sheltered Chronically Homeless Individuals	55	72	14	96	64	-32	-33%
Unsheltered Chronically Homeless Individuals	94	97	123	71	160	89	125%
<b>Total Chronically Homeless Individuals</b>	<b>149</b>	<b>169</b>	<b>137</b>	<b>167</b>	<b>224</b>	<b>57</b>	<b>34%</b>
Sheltered Veterans	20	32	18	19	18	-1	-5%
Unsheltered Veterans	15	11	12	8	8	0	0%
<b>Total Veterans</b>	<b>35</b>	<b>43</b>	<b>30</b>	<b>27</b>	<b>26</b>	<b>-1</b>	<b>-4%</b>
Sheltered Unaccompanied Youth (up to 24)	--	16	13	22	23	1	5%
Unsheltered Unaccompanied Youth (up to 24)	--	6	10	15	11	-4	-27%
<b>Total Unaccompanied Youth (up to 24)</b>	<b>--</b>	<b>22</b>	<b>23</b>	<b>37</b>	<b>34</b>	<b>-3</b>	<b>-8%</b>

### System Performance Measures Summary

	2014	2015	2016	2017	2018	2017-18 Change	% Change
Average Length of Time Homeless (days)	N/A	99	80	67	61	-6	-9%
Rate People Return to Homelessness in 6 Months	N/A	10.9%	11.0%	12.2%	8.3%	-3.8%	N/A
Number of People who are Homeless for the First Time	N/A	1695	2301	2597	2368	-229	-8.8%
Rate People Exit from ES, SH, TH, and RRH to PH	N/A	38.4%	30.9%	41.0%	43.1%	2.1%	N/A
Rate People in PSH and OPH Retain or Exit to PH	N/A	96.1%	97.3%	96.9%	96.0%	-0.9%	N/A

### Housing Inventory Count Summary

	2014	2015	2016	2017	2018	2017-18 Change	% Change
Emergency Shelter (ES)	235	244	270	345	346	1	0%
Transitional Housing (TH)	179	251	132	32	32	0	0%
Permanent Supportive Housing (PSH)	363	338	406	441	490	49	11%
Rapid Re-Housing (RRH)	53	152	170	195	298	103	53%
Other Permanent Housing (OPH)	--	--	--	--	8	--	--

### Award Summary

	2014	2015	2016	2017	2018	2017-18 Change	% Change
<b>Continuum of Care (CoC)</b>	\$5,340,100	\$5,243,399	\$6,557,997	\$6,599,004	\$7,191,193	\$592,189	9%
<b>Emergency Solutions Grants (ESG)</b>	\$682,244	\$730,447	\$630,083	\$621,651	\$618,618	(\$3,033)	0%