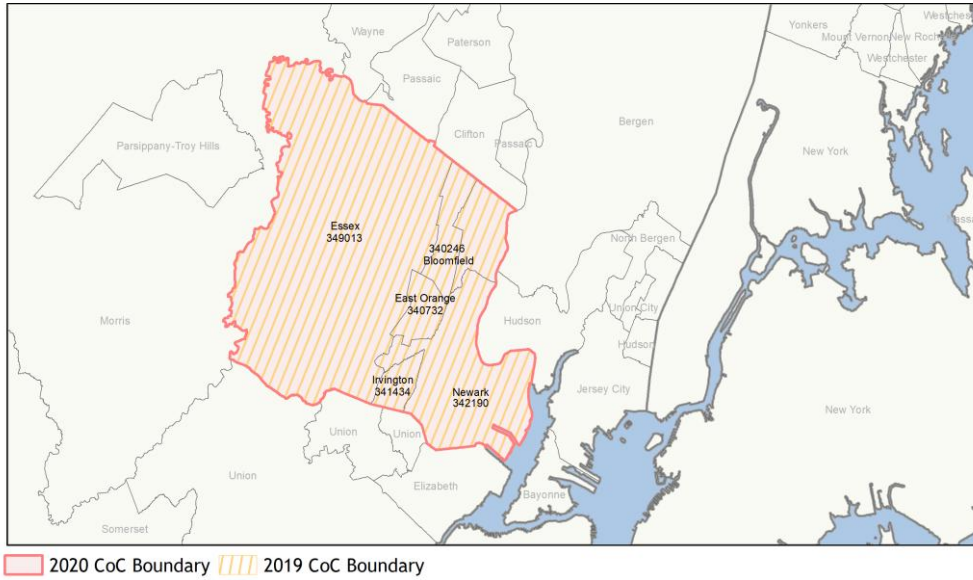
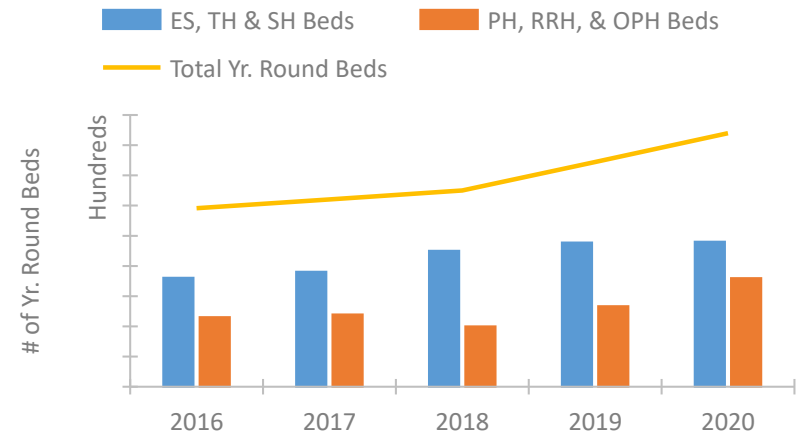


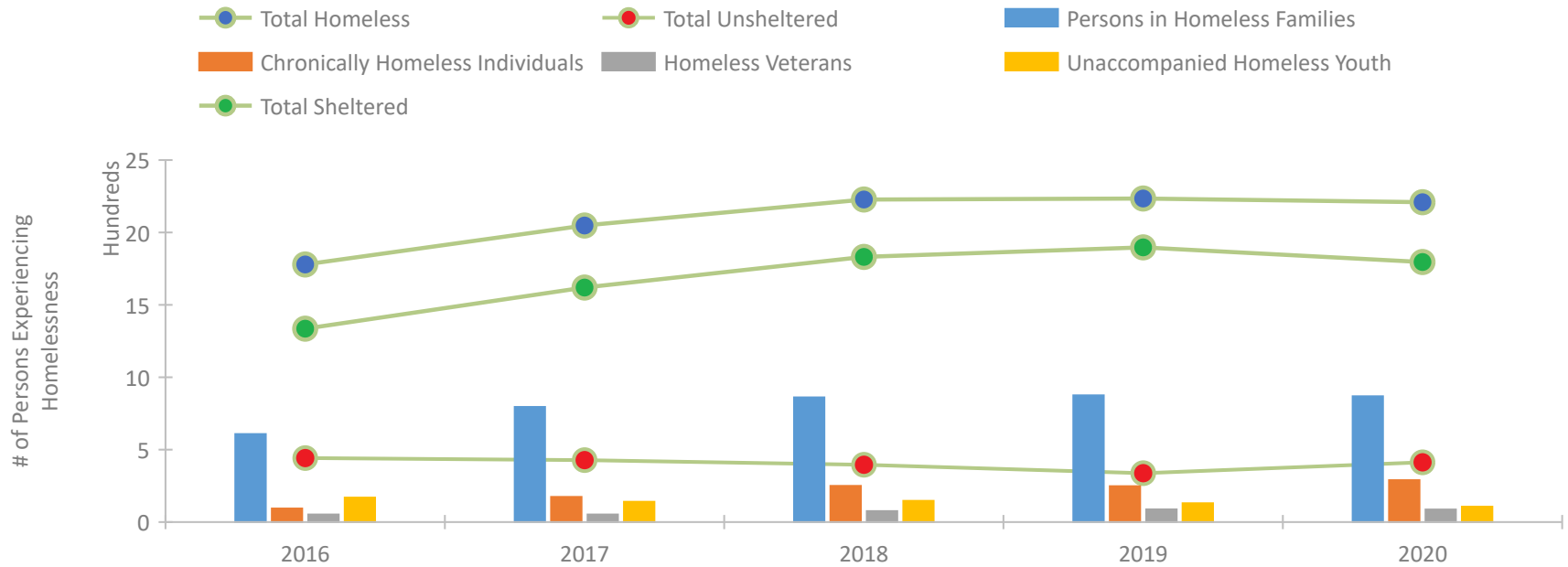
# CoC Performance Profile NJ-504 Newark/Essex County CoC



## Housing Inventory Count by Program Type

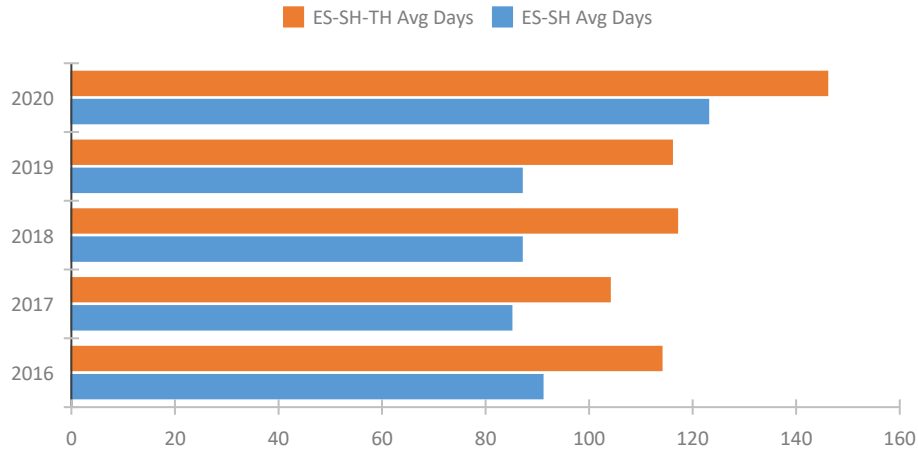


## Homeless Population – Point-in-Time (PIT) Count

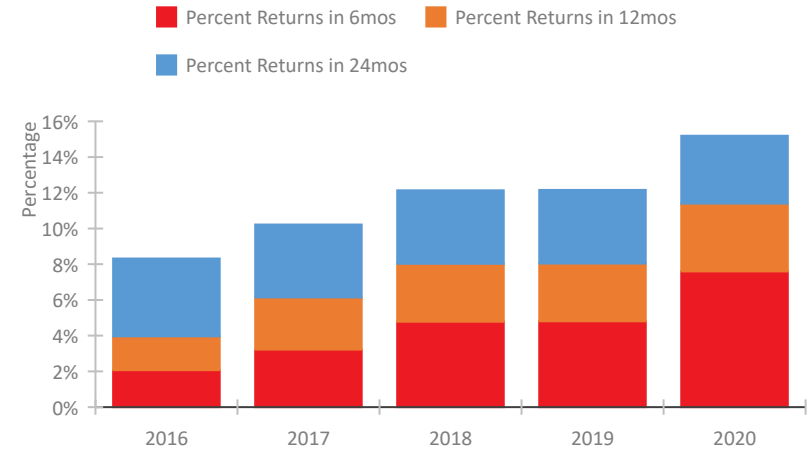


## CoC Performance Profile NJ-504 Newark/Essex County CoC

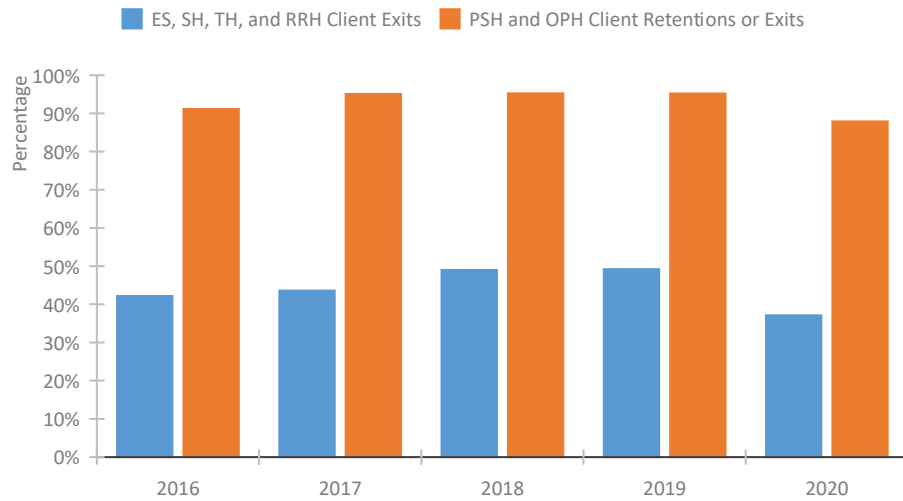
### Length of Time Homeless



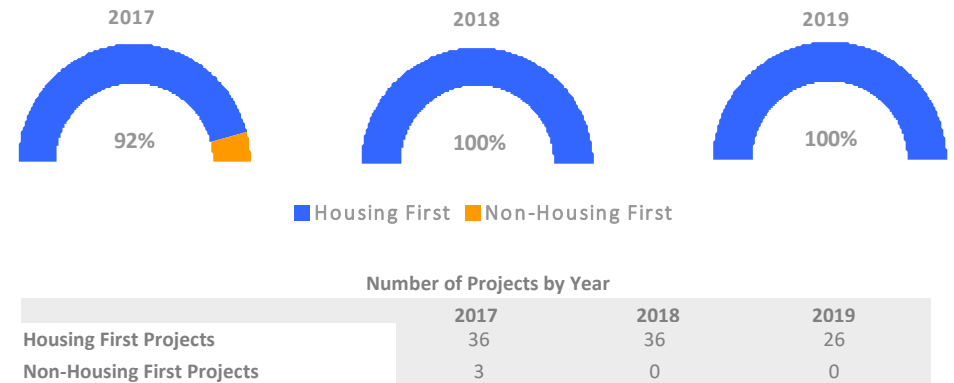
### Returns to Homelessness Over Time



### Exits to Permanent Housing by Program Type



### Proportion of Housing First Projects by Year\*



\*In 2020 HUD awarded renewal projects noncompetitively, therefore no new data was collected and Housing First data remains the same from 2019 to 2020.

## Data Summary: NJ-504 Newark/Essex County CoC

### Point-In-Time Count Summary

	2016	2017	2018	2019	2020	2019-20 Change	% Change
Number of Sheltered Persons in Families	598	788	854	862	837	-25	-3%
Number of Unsheltered Persons in Families	10	7	7	13	32	19	146%
Number of Sheltered Individuals	738	832	978	1,035	959	-76	-7%
Number of Unsheltered Individuals	433	421	389	325	381	56	17%
<b>Total Homeless Persons</b>	<b>1,779</b>	<b>2,048</b>	<b>2,228</b>	<b>2,235</b>	<b>2,209</b>	<b>-26</b>	<b>-1%</b>
Number of Sheltered Families	209	269	296	287	275	-12	-4%
Number of Unsheltered Families	3	3	3	4	14	10	250%
<b>Number of Total Families</b>	<b>212</b>	<b>272</b>	<b>299</b>	<b>291</b>	<b>289</b>	<b>-2</b>	<b>-1%</b>
Sheltered Chronically Homeless Individuals	5	83	53	86	93	7	8%
Unsheltered Chronically Homeless Individuals	89	91	197	162	196	34	21%
<b>Total Chronically Homeless Individuals</b>	<b>94</b>	<b>174</b>	<b>250</b>	<b>248</b>	<b>289</b>	<b>41</b>	<b>17%</b>
Sheltered Veterans	32	34	61	74	63	-11	-15%
Unsheltered Veterans	20	18	15	14	24	10	71%
<b>Total Veterans</b>	<b>52</b>	<b>52</b>	<b>76</b>	<b>88</b>	<b>87</b>	<b>-1</b>	<b>-1%</b>
Sheltered Unaccompanied Youth (up to 24)	143	120	120	115	94	-21	-18%
Unsheltered Unaccompanied Youth (up to 24)	26	20	27	15	12	-3	-20%
<b>Total Unaccompanied Youth (up to 24)</b>	<b>169</b>	<b>140</b>	<b>147</b>	<b>130</b>	<b>106</b>	<b>-24</b>	<b>-18%</b>

### System Performance Measures Summary

	2016	2017	2018	2018	2020	2019-20 Change	% Change
Average Length of Time Homeless (days)	114	104	117	116	146	30	25.9%
Rate People Return to Homelessness in 6 Months	2.1%	3.2%	4.8%	4.8%	7.6%	2.8%	N/A
Number of People who are Homeless for the First Time	4,309	4,753	4,456	4,459	3,520	-939	-21.1%
Rate People Exit from ES, SH, TH, and RRH to PH	42.2%	43.6%	49.0%	49.2%	37.1%	-12.1%	N/A
Rate People in PSH and OPH Retain or Exit to PH	91.2%	95.1%	95.3%	95.2%	87.9%	-7.3%	N/A

### Housing Inventory Count Summary

	2016	2017	2018	2019	2020	2019-20 Change	% Change
Emergency Shelter (ES)	1,181	1,379	1,575	1,723	1,759	36	2%
Transitional Housing (TH)	624	526	677	665	643	-22	-3%
Permanent Supportive Housing (PSH)	825	1,157	980	1,235	1,620	385	31%
Rapid Re-Housing (RRH)	327	40	20	99	167	68	69%
Other Permanent Housing (OPH)	--	--	--	--	11	--	--

### Award Summary

	2016	2017	2018	2019	2020	2019-20 Change	% Change
<b>Continuum of Care (CoC)</b>	\$6,604,274	\$6,310,835	\$6,442,940	\$6,376,138	\$6,992,985	\$616,847	10%
<b>Emergency Solutions Grants (ESG)</b>	\$1,001,609	\$1,101,744	\$1,008,172	\$1,049,463	\$1,083,692	\$34,229	3%