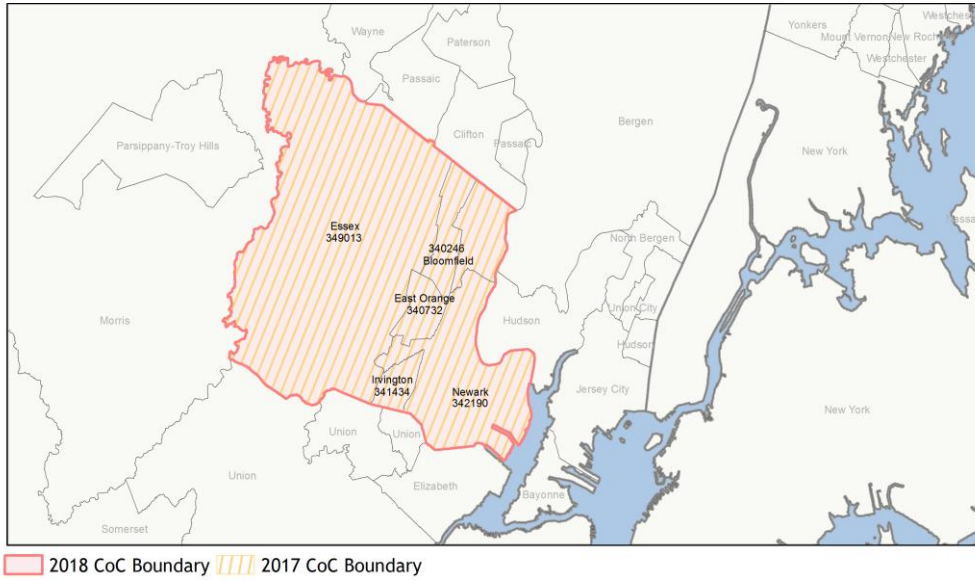
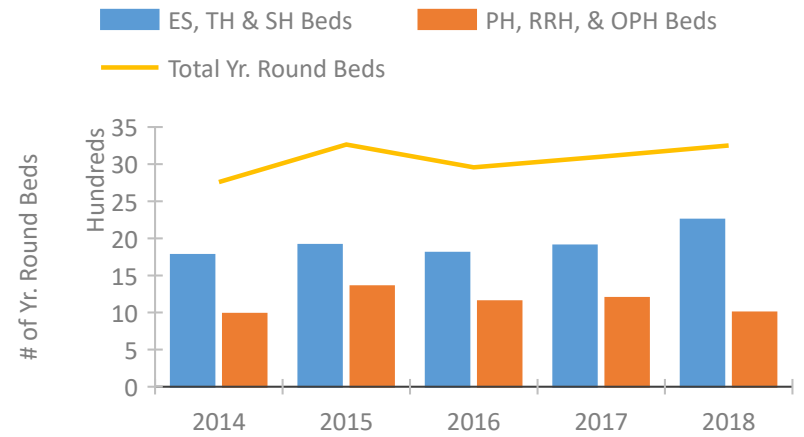


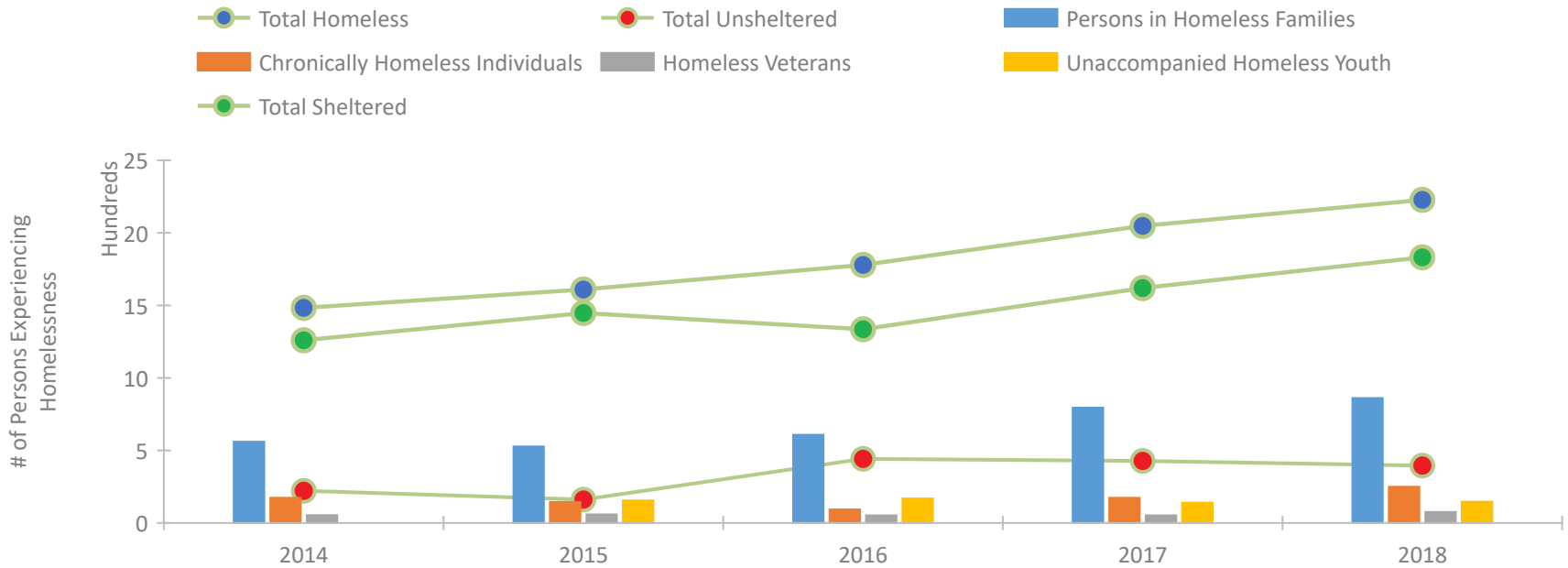
CoC Performance Profile NJ-504 Newark/Essex County CoC



Housing Inventory Count by Program Type

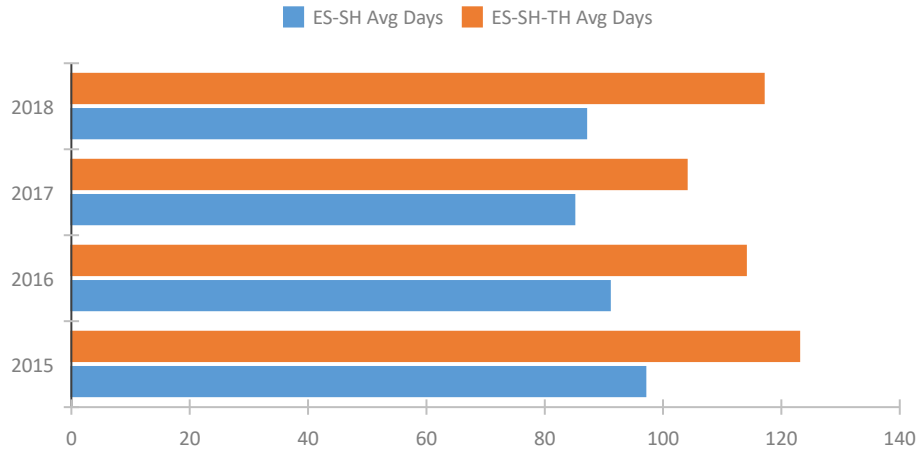


Homeless Population – Point-in-Time (PIT) Count

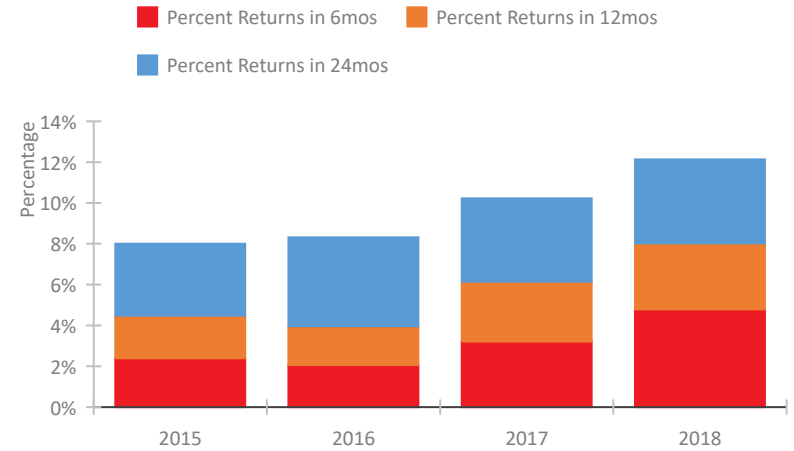


CoC Performance Profile NJ-504 Newark/Essex County CoC

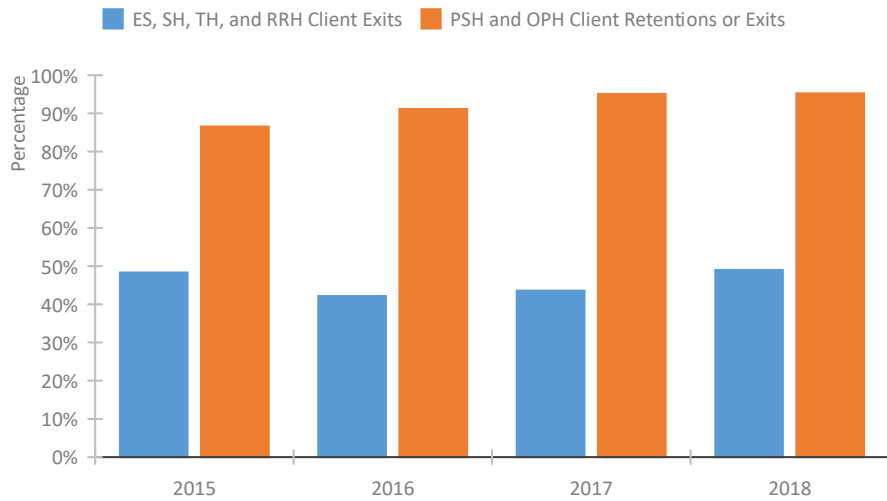
Length of Time Homeless



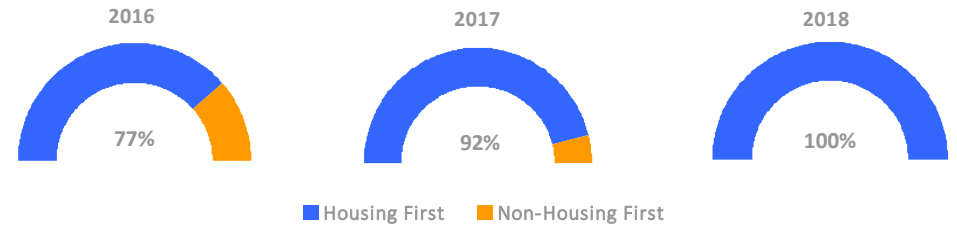
Returns to Homelessness Over Time



Exits to Permanent Housing by Program Type



Proportion of Housing First Projects by Year



Number of Projects by Year

	2016	2017	2018
Housing First Projects	27	36	36
Non-Housing First Projects	8	3	0

Data Summary: NJ-504 Newark/Essex County CoC

Point-In-Time Count Summary

	2014	2015	2016	2017	2018	2017-18 Change	% Change
Number of Sheltered Persons in Families	560	528	598	788	854	66	8%
Number of Unsheltered Persons in Families	0	0	10	7	7	0	0%
Number of Sheltered Individuals	700	920	738	832	978	146	18%
Number of Unsheltered Individuals	223	162	433	421	389	-32	-8%
Total Homeless Persons	1,483	1,610	1,779	2,048	2,228	180	9%
Number of Sheltered Families	199	222	209	269	296	27	10%
Number of Unsheltered Families	0	0	3	3	3	0	0%
Number of Total Families	199	222	212	272	299	27	10%
Sheltered Chronically Homeless Individuals	76	57	5	83	53	-30	-36%
Unsheltered Chronically Homeless Individuals	98	88	89	91	197	106	116%
Total Chronically Homeless Individuals	174	145	94	174	250	76	44%
Sheltered Veterans	35	42	32	34	61	27	79%
Unsheltered Veterans	19	17	20	18	15	-3	-17%
Total Veterans	54	59	52	52	76	24	46%
Sheltered Unaccompanied Youth (up to 24)	--	142	143	120	120	0	0%
Unsheltered Unaccompanied Youth (up to 24)	--	13	26	20	27	7	35%
Total Unaccompanied Youth (up to 24)	--	155	169	140	147	7	5%

System Performance Measures Summary

	2014	2015	2016	2017	2018	2017-18 Change	% Change
Average Length of Time Homeless (days)	N/A	123	114	104	117	13	12.5%
Rate People Return to Homelessness in 6 Months	N/A	2.4%	2.1%	3.2%	4.8%	1.6%	N/A
Number of People who are Homeless for the First Time	N/A	3964	4309	4753	4456	-297	-6.2%
Rate People Exit from ES, SH, TH, and RRH to PH	N/A	48.3%	42.2%	43.6%	49.0%	5.4%	N/A
Rate People in PSH and OPH Retain or Exit to PH	N/A	86.5%	91.2%	95.1%	95.3%	0.2%	N/A

Housing Inventory Count Summary

	2014	2015	2016	2017	2018	2017-18 Change	% Change
Emergency Shelter (ES)	1,071	1,155	1,181	1,379	1,575	196	14%
Transitional Housing (TH)	706	757	624	526	677	151	29%
Permanent Supportive Housing (PSH)	983	901	825	1,157	980	-177	-15%
Rapid Re-Housing (RRH)	--	452	327	40	20	-20	-50%

Award Summary

	2014	2015	2016	2017	2018	2017-18 Change	% Change
Continuum of Care (CoC)	\$5,867,522	\$5,738,188	\$6,604,274	\$6,310,835	\$6,442,940	\$132,105	2%
Emergency Solutions Grants (ESG)	\$931,329	\$996,099	\$1,001,609	\$1,101,744	\$1,008,172	(\$93,572)	-8%