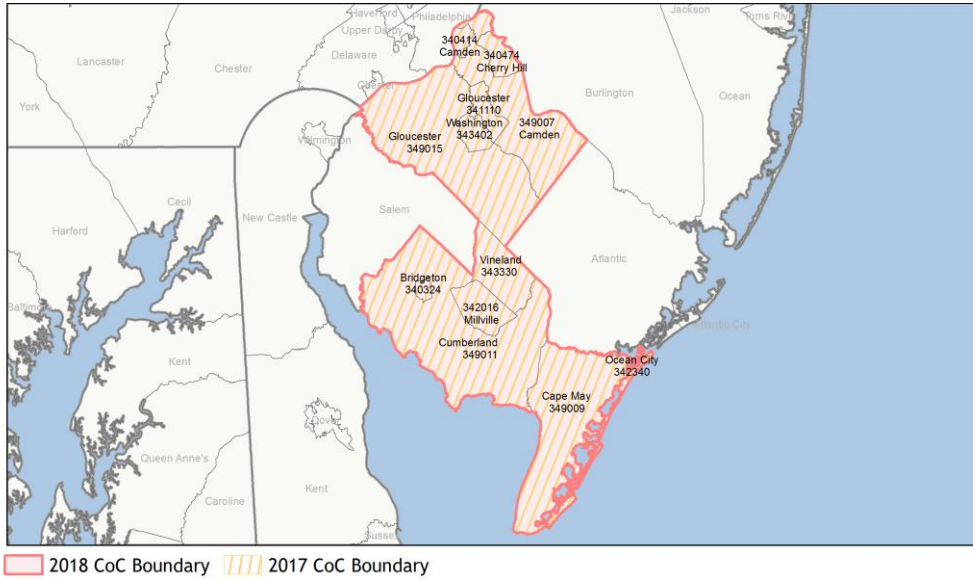
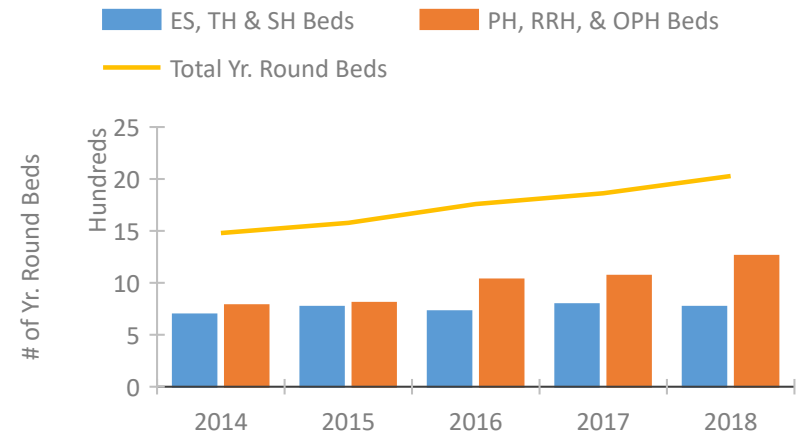


CoC Performance Profile NJ-503

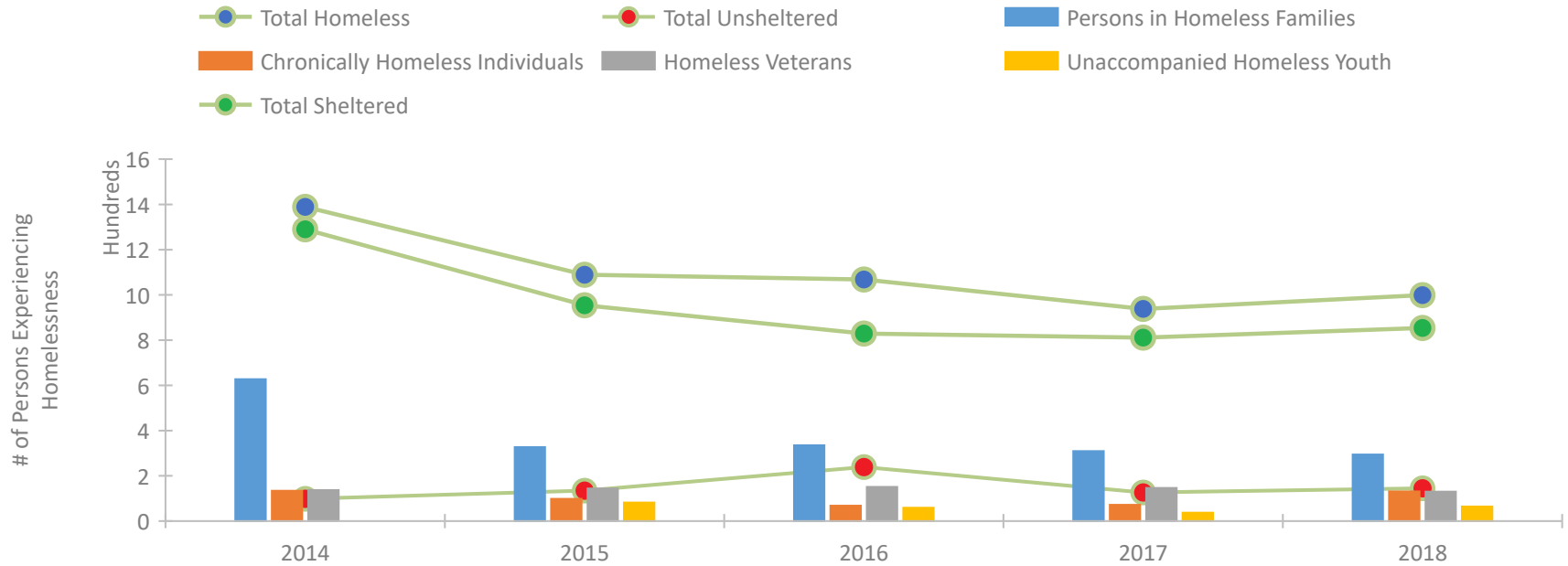
Camden City & County/Gloucester, Cape May, Cumberland Counties CoC



Housing Inventory Count by Program Type



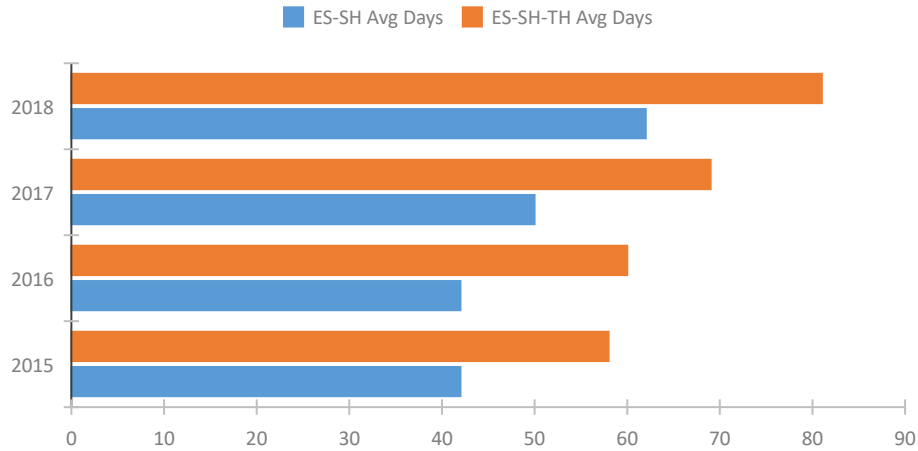
Homeless Population – Point-in-Time (PIT) Count



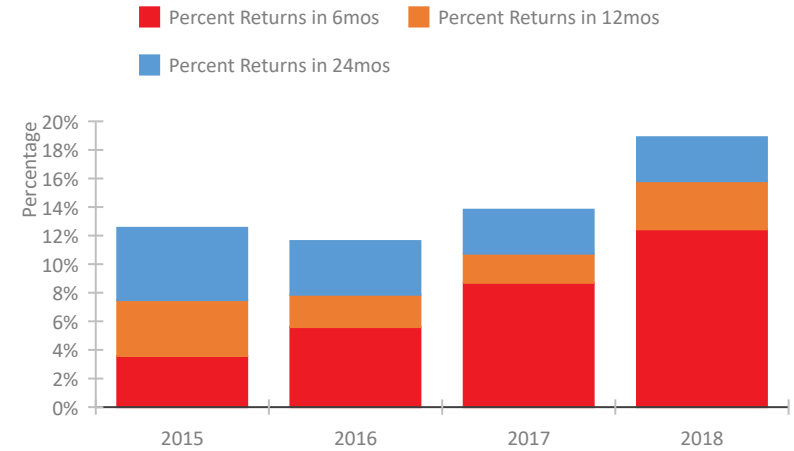
CoC Performance Profile NJ-503

Camden City & County/Gloucester, Cape May, Cumberland Counties CoC

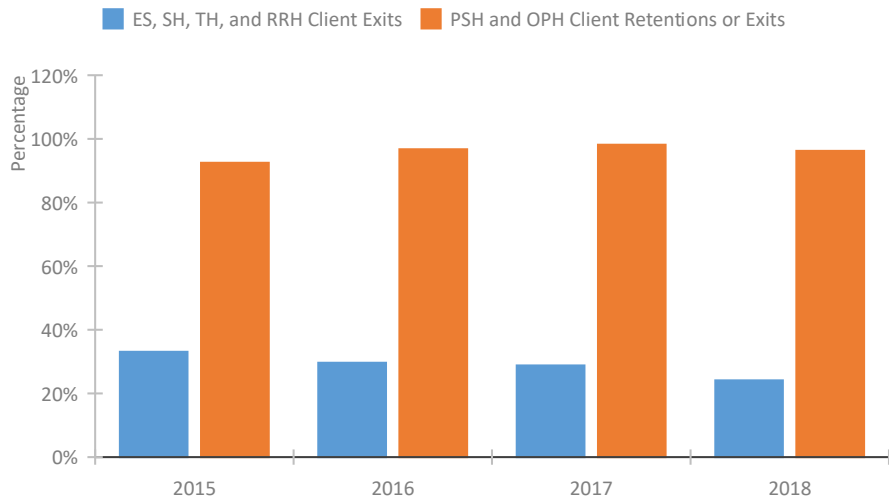
Length of Time Homeless



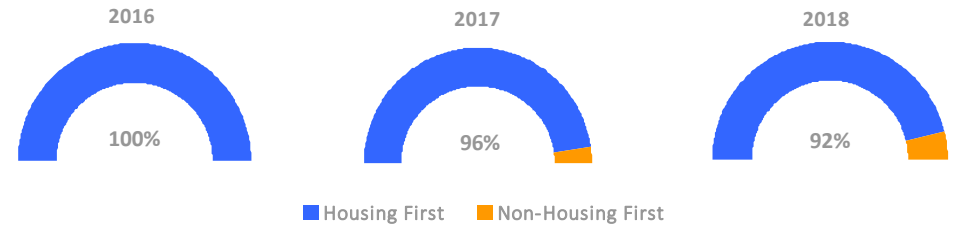
Returns to Homelessness Over Time



Exits to Permanent Housing by Program Type



Proportion of Housing First Projects by Year



Number of Projects by Year

	2016	2017	2018
Housing First Projects	32	23	22
Non-Housing First Projects	0	1	2

Data Summary: NJ-503 Camden City & County/Gloucester, Cape May, Cumberland Counties CoC

Point-In-Time Count Summary

	2014	2015	2016	2017	2018	2017-18 Change	% Change
Number of Sheltered Persons in Families	623	318	308	309	286	-23	-7%
Number of Unsheltered Persons in Families	4	9	27	0	8	8	100%
Number of Sheltered Individuals	667	636	521	502	568	66	13%
Number of Unsheltered Individuals	95	126	212	127	137	10	8%
Total Homeless Persons	1,389	1,089	1,068	938	999	61	7%
Number of Sheltered Families	209	100	94	98	92	-6	-6%
Number of Unsheltered Families	1	2	8	0	2	2	100%
Number of Total Families	210	102	102	98	94	-4	-4%
Sheltered Chronically Homeless Individuals	89	59	16	38	51	13	34%
Unsheltered Chronically Homeless Individuals	45	39	52	34	80	46	135%
Total Chronically Homeless Individuals	134	98	68	72	131	59	82%
Sheltered Veterans	126	136	135	136	125	-11	-8%
Unsheltered Veterans	11	8	16	10	5	-5	-50%
Total Veterans	137	144	151	146	130	-16	-11%
Sheltered Unaccompanied Youth (up to 24)	--	73	50	33	57	24	73%
Unsheltered Unaccompanied Youth (up to 24)	--	9	9	4	7	3	75%
Total Unaccompanied Youth (up to 24)	--	82	59	37	64	27	73%

System Performance Measures Summary

	2014	2015	2016	2017	2018	2017-18 Change	% Change
Average Length of Time Homeless (days)	N/A	58	60	69	81	12	17.4%
Rate People Return to Homelessness in 6 Months	N/A	3.6%	5.6%	8.7%	12.4%	3.7%	N/A
Number of People who are Homeless for the First Time	N/A	2929	3586	3554	3250	-304	-8.6%
Rate People Exit from ES, SH, TH, and RRH to PH	N/A	33.1%	29.6%	28.8%	24.1%	-4.7%	N/A
Rate People in PSH and OPH Retain or Exit to PH	N/A	92.5%	96.7%	98.2%	96.2%	-1.9%	N/A

Housing Inventory Count Summary

	2014	2015	2016	2017	2018	2017-18 Change	% Change
Emergency Shelter (ES)	346	363	434	499	487	-12	-2%
Transitional Housing (TH)	350	406	293	296	282	-14	-5%
Permanent Supportive Housing (PSH)	609	721	822	880	1,009	129	15%
Rapid Re-Housing (RRH)	175	87	133	111	168	57	51%
Other Permanent Housing (OPH)	--	--	77	77	83	6	8%

Award Summary

	2014	2015	2016	2017	2018	2017-18 Change	% Change
Continuum of Care (CoC)	\$2,849,136	\$3,452,067	\$3,548,788	\$3,586,935	\$3,703,084	\$116,149	3%
Emergency Solutions Grants (ESG)	\$356,728	\$387,797	\$388,665	\$388,815	\$391,289	\$2,474	1%