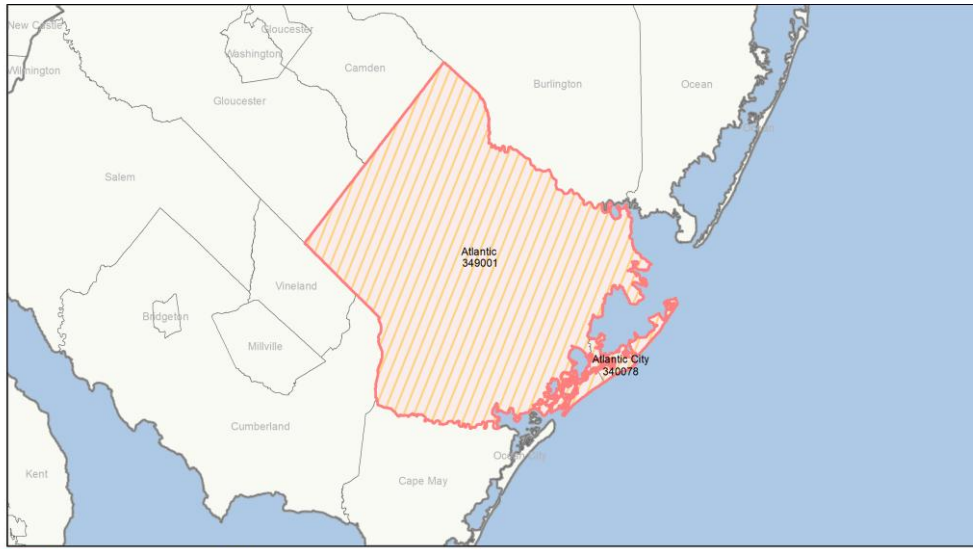
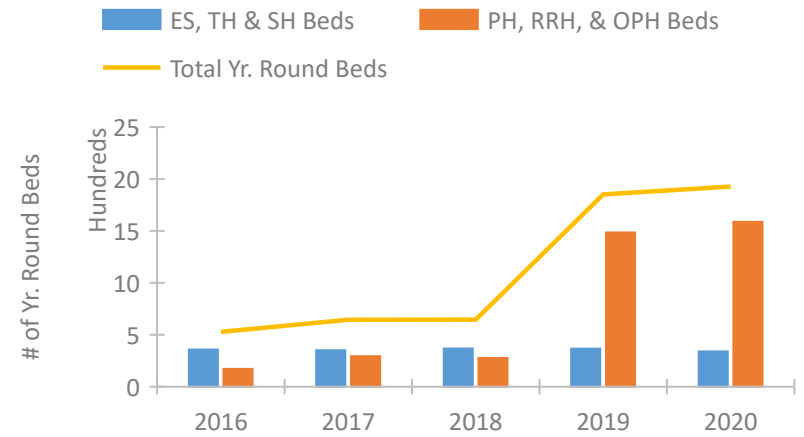


CoC Performance Profile NJ-500 Atlantic City & County CoC

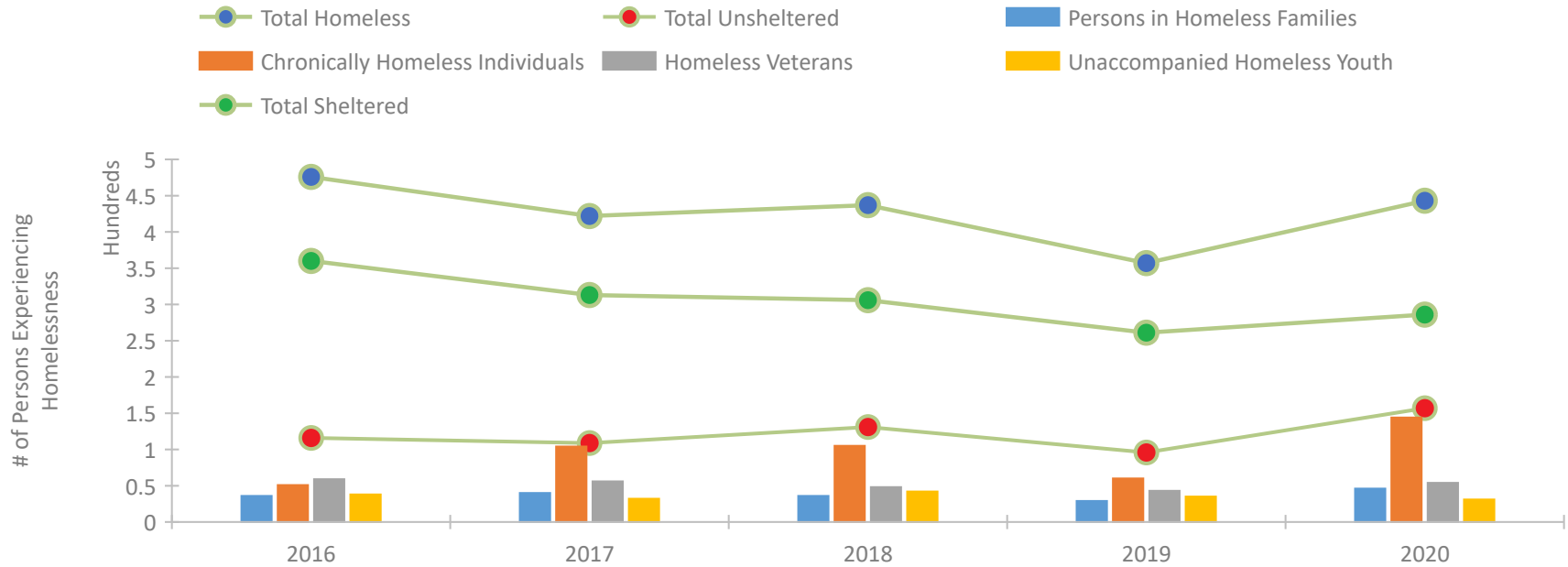


2020 CoC Boundary 2019 CoC Boundary

Housing Inventory Count by Program Type

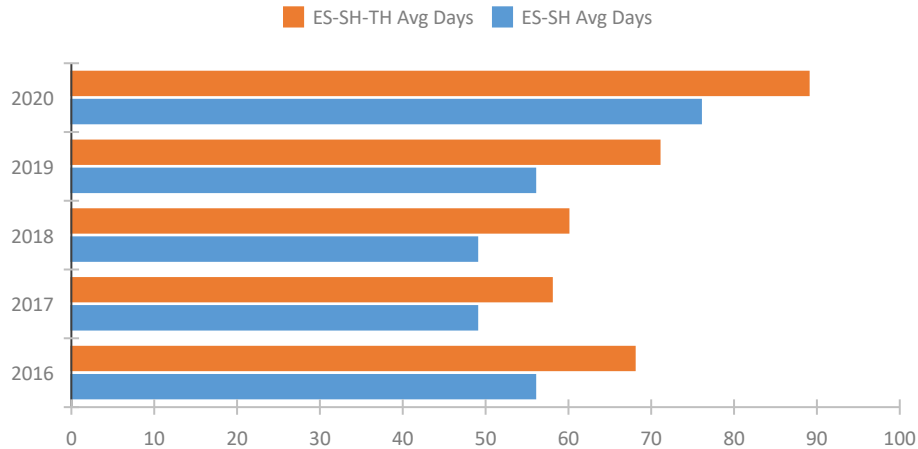


Homeless Population – Point-in-Time (PIT) Count

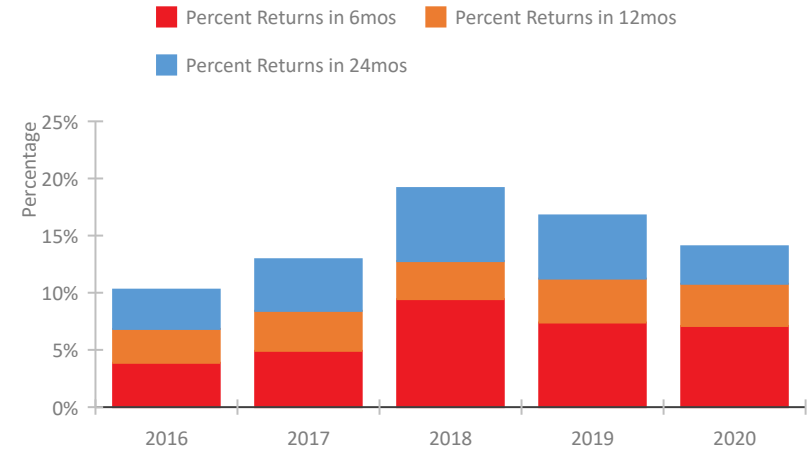


CoC Performance Profile NJ-500 Atlantic City & County CoC

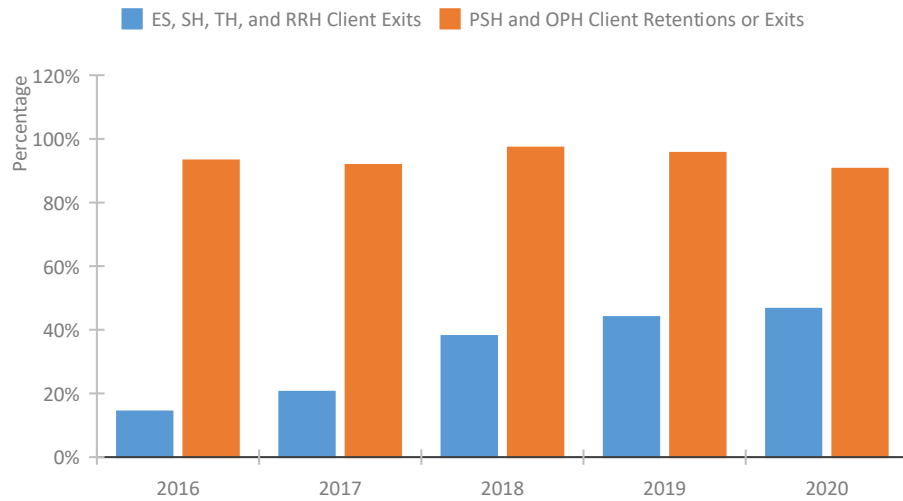
Length of Time Homeless



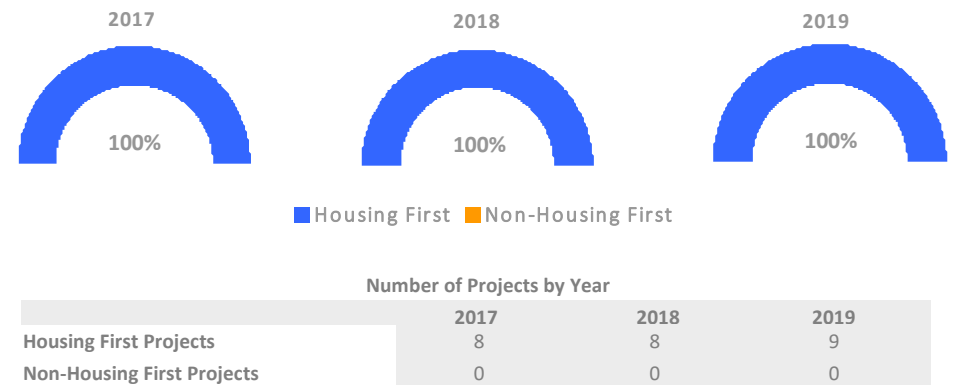
Returns to Homelessness Over Time



Exits to Permanent Housing by Program Type



Proportion of Housing First Projects by Year*



*In 2020 HUD awarded renewal projects noncompetitively, therefore no new data was collected and Housing First data remains the same from 2019 to 2020.

Data Summary: NJ-500 Atlantic City & County CoC

Point-In-Time Count Summary

	2016	2017	2018	2019	2020	2019-20 Change	% Change
Number of Sheltered Persons in Families	36	40	36	29	46	17	59%
Number of Unsheltered Persons in Families	0	0	0	0	0	0	--
Number of Sheltered Individuals	324	273	270	232	240	8	3%
Number of Unsheltered Individuals	116	109	131	96	157	61	64%
Total Homeless Persons	476	422	437	357	443	86	24%
Number of Sheltered Families	14	15	12	10	15	5	50%
Number of Unsheltered Families	0	0	0	0	0	0	--
Number of Total Families	14	15	12	10	15	5	50%
Sheltered Chronically Homeless Individuals	20	57	44	40	68	28	70%
Unsheltered Chronically Homeless Individuals	31	47	61	20	76	56	280%
Total Chronically Homeless Individuals	51	104	105	60	144	84	140%
Sheltered Veterans	54	51	37	39	41	2	5%
Unsheltered Veterans	5	5	11	4	13	9	225%
Total Veterans	59	56	48	43	54	11	26%
Sheltered Unaccompanied Youth (up to 24)	37	31	38	33	26	-7	-21%
Unsheltered Unaccompanied Youth (up to 24)	1	1	4	2	5	3	150%
Total Unaccompanied Youth (up to 24)	38	32	42	35	31	-4	-11%

System Performance Measures Summary

	2016	2017	2018	2018	2020	2019-20 Change	% Change
Average Length of Time Homeless (days)	68	58	60	71	89	18	25.4%
Rate People Return to Homelessness in 6 Months	3.9%	4.9%	9.4%	7.4%	7.1%	-0.3%	N/A
Number of People who are Homeless for the First Time	1,154	1,891	2,902	2,233	1,577	-656	-29.4%
Rate People Exit from ES, SH, TH, and RRH to PH	14.3%	20.5%	38.0%	44.0%	46.6%	2.6%	N/A
Rate People in PSH and OPH Retain or Exit to PH	93.2%	91.8%	97.2%	95.6%	90.6%	-5%	N/A

Housing Inventory Count Summary

	2016	2017	2018	2019	2020	2019-20 Change	% Change
Emergency Shelter (ES)	309	303	287	273	265	-8	-3%
Transitional Housing (TH)	48	48	81	93	74	-19	-20%
Permanent Supportive Housing (PSH)	152	223	223	176	184	8	5%
Rapid Re-Housing (RRH)	19	70	54	1,309	1,404	95	7%

Award Summary

	2016	2017	2018	2019	2020	2019-20 Change	% Change
Continuum of Care (CoC)	\$519,516	\$573,077	\$541,425	\$590,105	\$629,371	\$39,266	7%
ESG (NJ state recipient - no direct funding)	\$2,772,454	\$3,223,041	\$2,933,940	\$3,052,410	\$3,321,481	\$269,071	9%