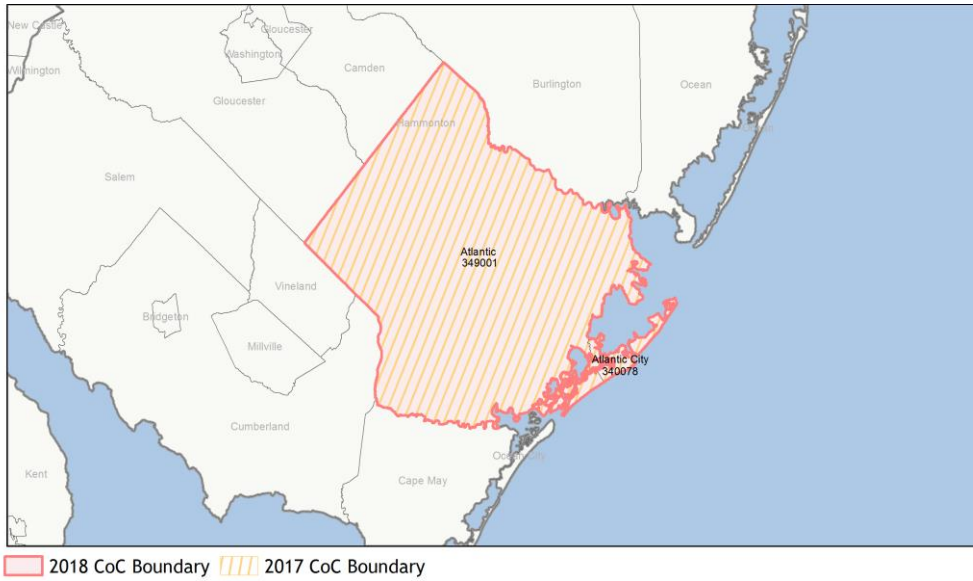
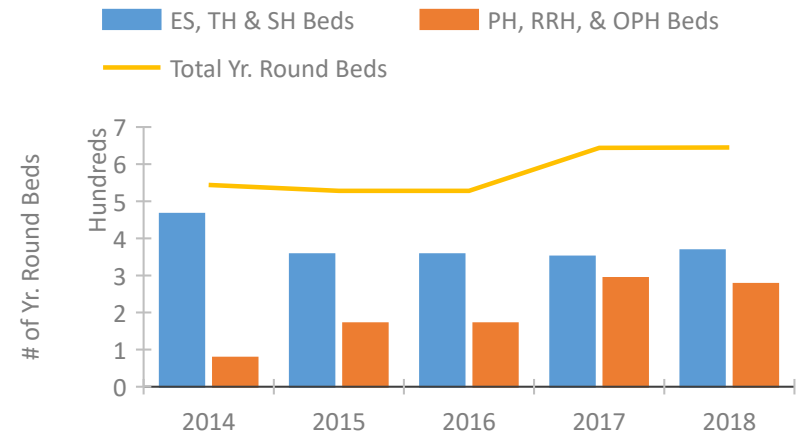


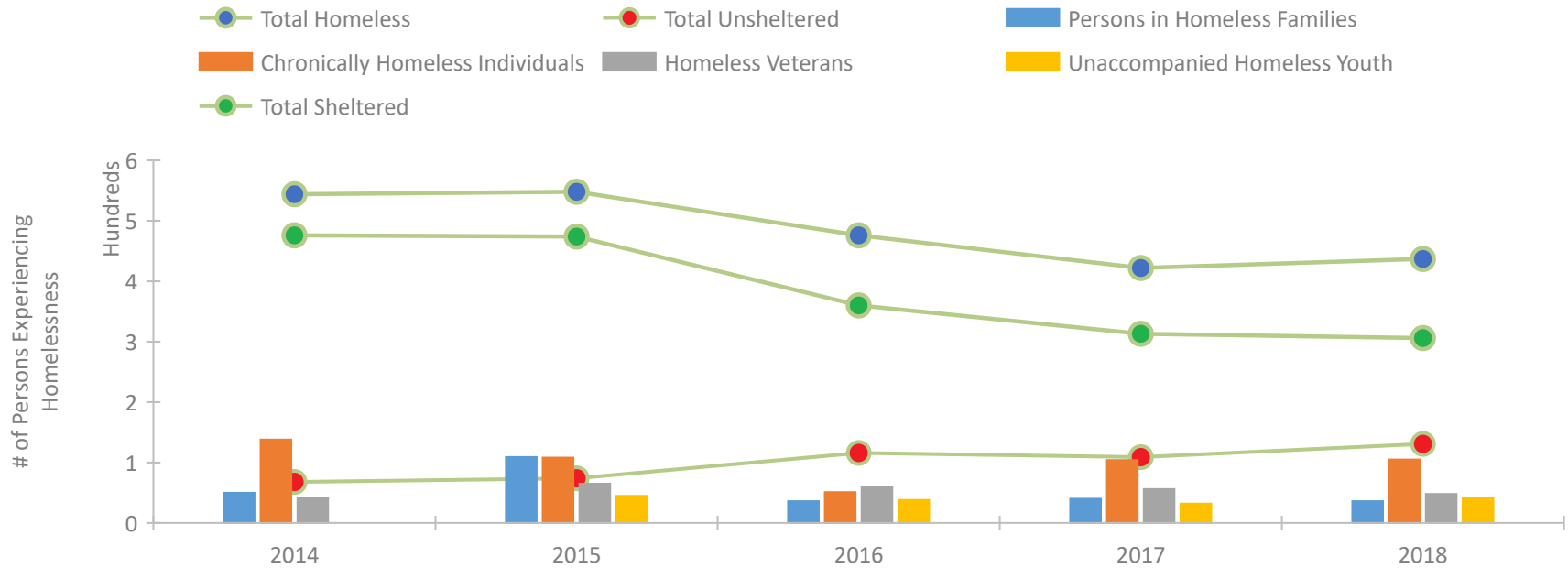
## CoC Performance Profile NJ-500 Atlantic City & County CoC



### Housing Inventory Count by Program Type

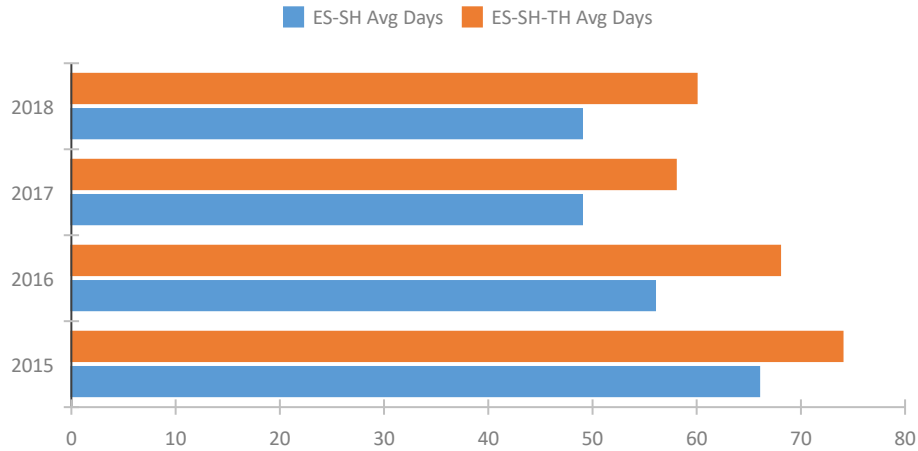


### Homeless Population – Point-in-Time (PIT) Count

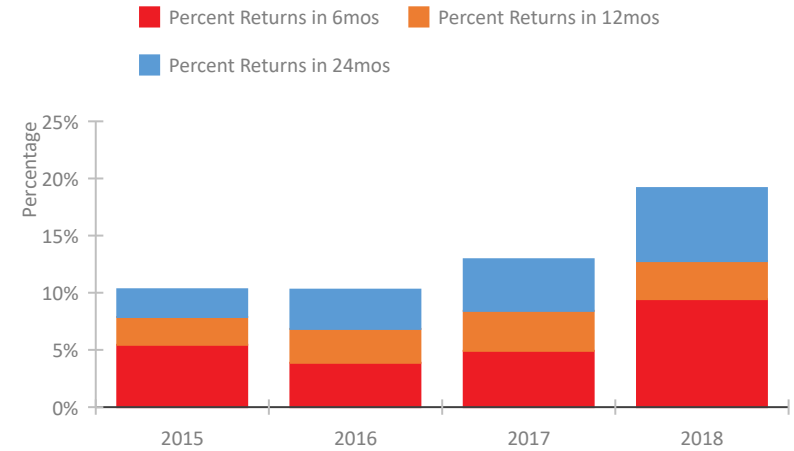


## CoC Performance Profile NJ-500 Atlantic City & County CoC

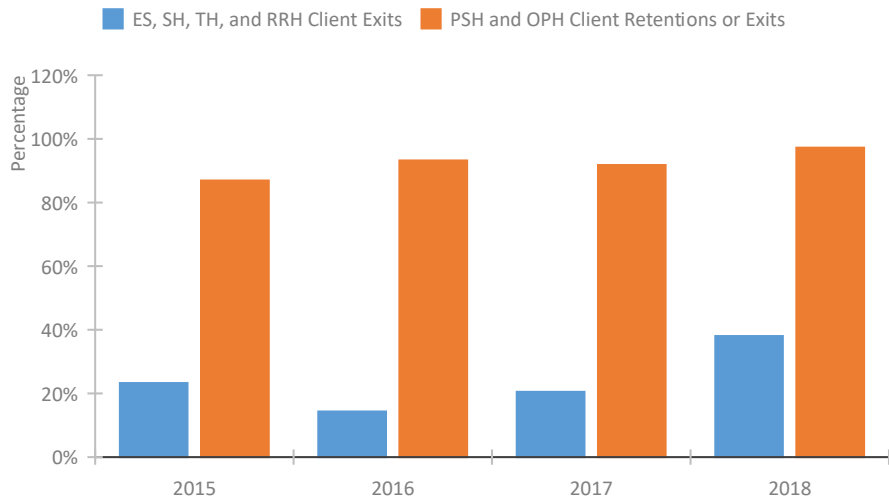
### Length of Time Homeless



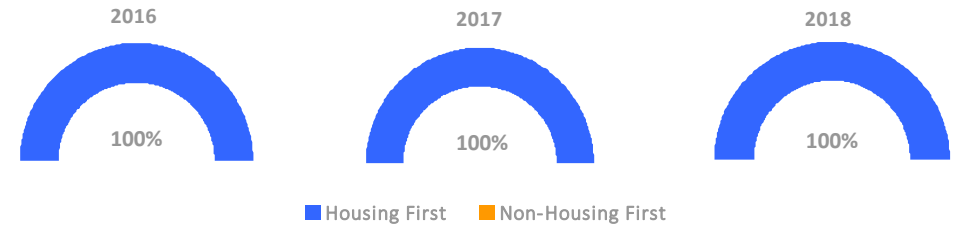
### Returns to Homelessness Over Time



### Exits to Permanent Housing by Program Type



### Proportion of Housing First Projects by Year



### Number of Projects by Year

	2016	2017	2018
Housing First Projects	8	8	8
Non-Housing First Projects	0	0	0

## Data Summary: NJ-500 Atlantic City & County CoC

### Point-In-Time Count Summary

	2014	2015	2016	2017	2018	2017-18 Change	% Change
Number of Sheltered Persons in Families	50	107	36	40	36	-4	-10%
Number of Unsheltered Persons in Families	0	2	0	0	0	0	--
Number of Sheltered Individuals	426	367	324	273	270	-3	-1%
Number of Unsheltered Individuals	68	72	116	109	131	22	20%
<b>Total Homeless Persons</b>	<b>544</b>	<b>548</b>	<b>476</b>	<b>422</b>	<b>437</b>	<b>15</b>	<b>4%</b>
Number of Sheltered Families	19	39	14	15	12	-3	-20%
Number of Unsheltered Families	0	1	0	0	0	0	--
<b>Number of Total Families</b>	<b>19</b>	<b>40</b>	<b>14</b>	<b>15</b>	<b>12</b>	<b>-3</b>	<b>-20%</b>
Sheltered Chronically Homeless Individuals	108	70	20	57	44	-13	-23%
Unsheltered Chronically Homeless Individuals	30	38	31	47	61	14	30%
<b>Total Chronically Homeless Individuals</b>	<b>138</b>	<b>108</b>	<b>51</b>	<b>104</b>	<b>105</b>	<b>1</b>	<b>1%</b>
Sheltered Veterans	36	54	54	51	37	-14	-27%
Unsheltered Veterans	5	11	5	5	11	6	120%
<b>Total Veterans</b>	<b>41</b>	<b>65</b>	<b>59</b>	<b>56</b>	<b>48</b>	<b>-8</b>	<b>-14%</b>
Sheltered Unaccompanied Youth (up to 24)	--	45	37	31	38	7	23%
Unsheltered Unaccompanied Youth (up to 24)	--	0	1	1	4	3	300%
<b>Total Unaccompanied Youth (up to 24)</b>	<b>--</b>	<b>45</b>	<b>38</b>	<b>32</b>	<b>42</b>	<b>10</b>	<b>31%</b>

### System Performance Measures Summary

	2014	2015	2016	2017	2018	2017-18 Change	% Change
Average Length of Time Homeless (days)	N/A	74	68	58	60	2	3.4%
Rate People Return to Homelessness in 6 Months	N/A	5.5%	3.9%	4.9%	9.4%	4.5%	N/A
Number of People who are Homeless for the First Time	N/A	1338	1154	1891	2902	1,011	53.5%
Rate People Exit from ES, SH, TH, and RRH to PH	N/A	23.3%	14.3%	20.5%	38.0%	17.5%	N/A
Rate People in PSH and OPH Retain or Exit to PH	N/A	86.9%	93.2%	91.8%	97.2%	5.5%	N/A

### Housing Inventory Count Summary

	2014	2015	2016	2017	2018	2017-18 Change	% Change
Emergency Shelter (ES)	402	309	309	303	287	-16	-5%
Transitional Housing (TH)	64	48	48	48	81	33	69%
Permanent Supportive Housing (PSH)	78	120	152	223	223	0	0%
Rapid Re-Housing (RRH)	--	18	19	70	54	-16	-23%

### Award Summary

	2014	2015	2016	2017	2018	2017-18 Change	% Change
<b>Continuum of Care (CoC)</b>	\$446,183	\$519,206	\$519,516	\$573,077	\$541,425	(\$31,652)	-6%
<b>ESG (NJ state recipient - no direct funding)</b>	\$2,487,873	\$2,682,257	\$2,772,454	\$3,223,041	\$2,933,940	(\$289,101)	-9%