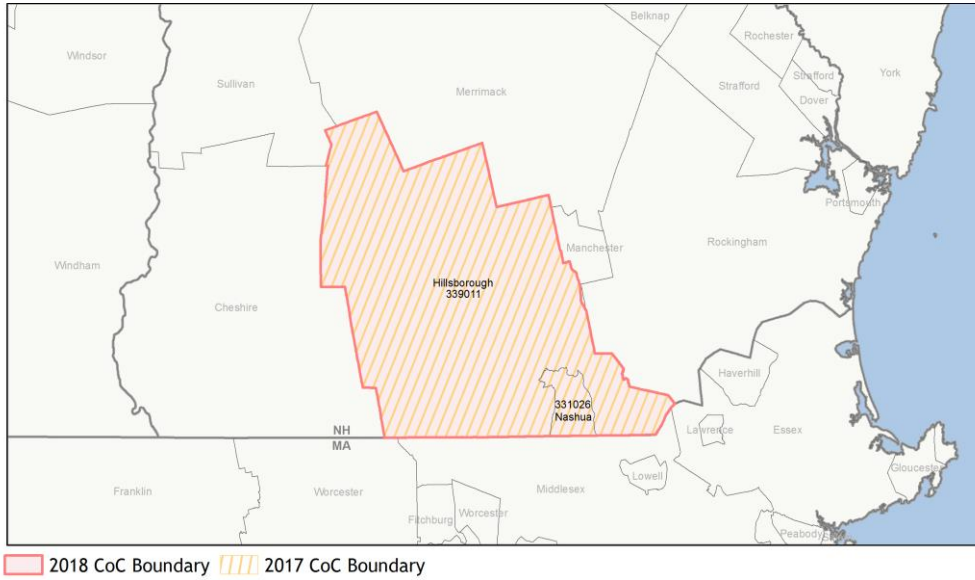
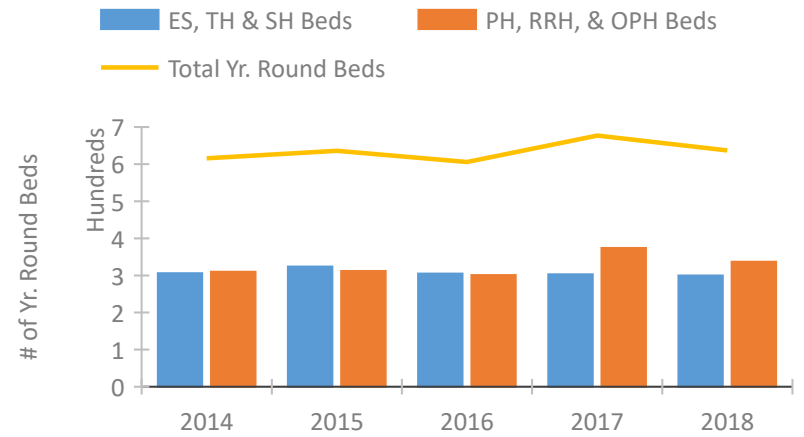


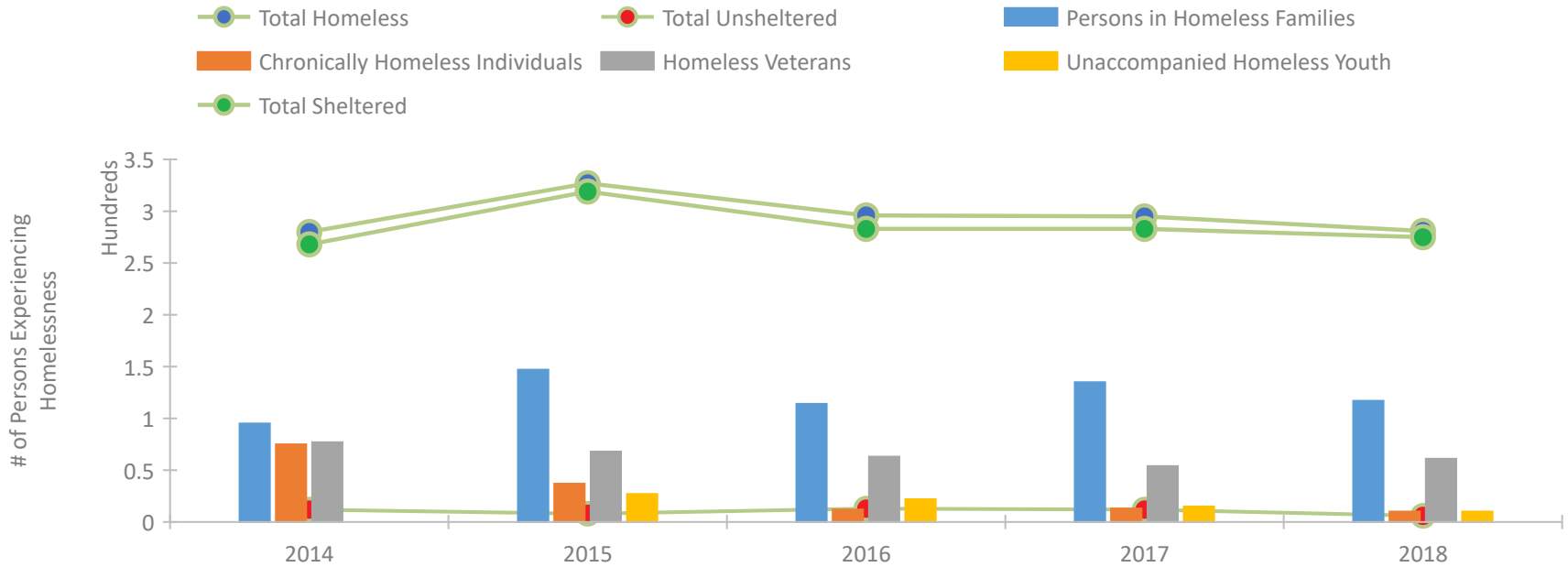
CoC Performance Profile NH-502 Nashua/Hillsborough County CoC



Housing Inventory Count by Program Type

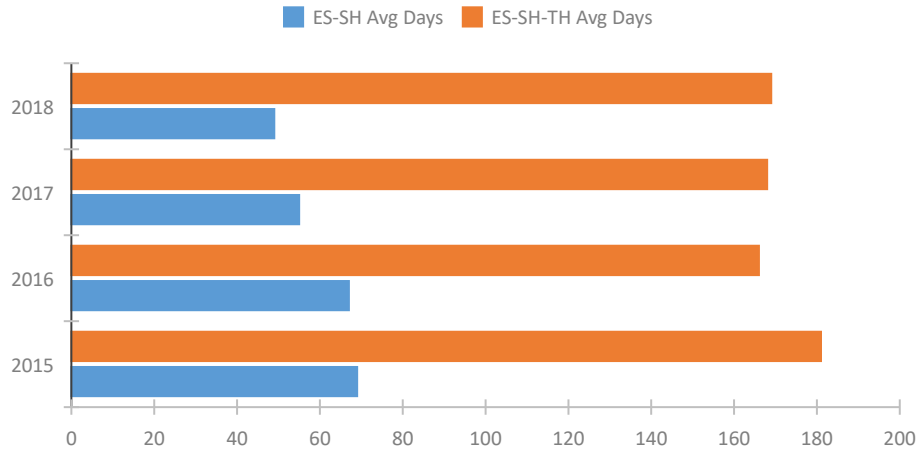


Homeless Population – Point-in-Time (PIT) Count

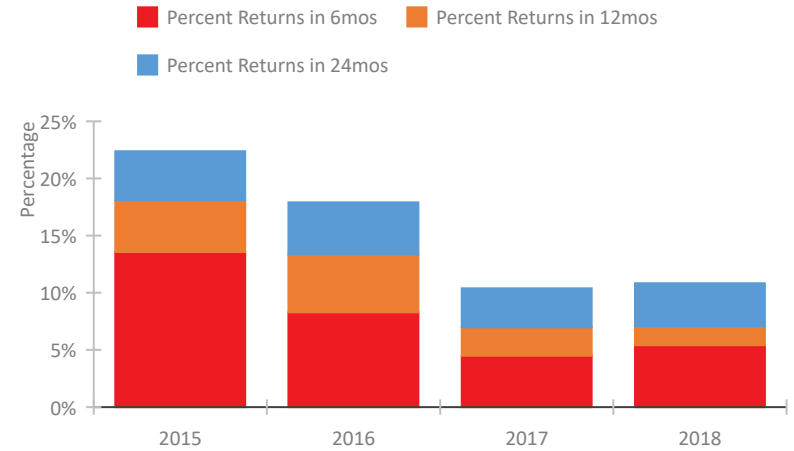


CoC Performance Profile NH-502 Nashua/Hillsborough County CoC

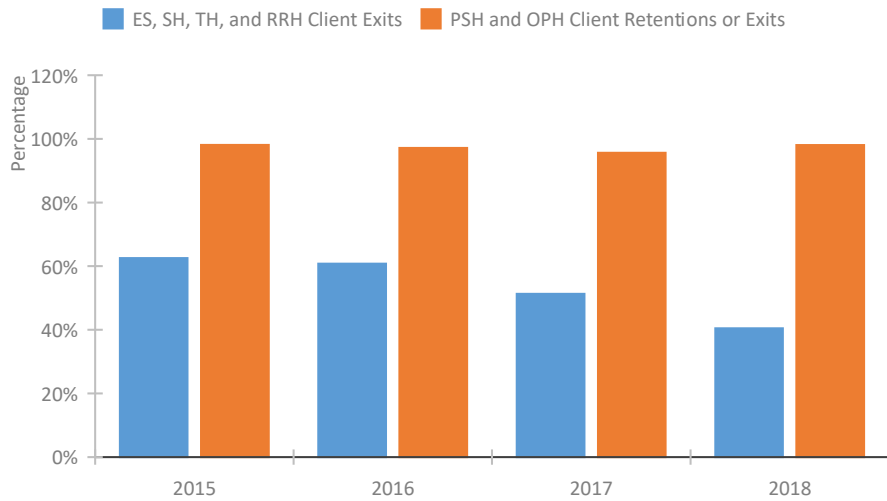
Length of Time Homeless



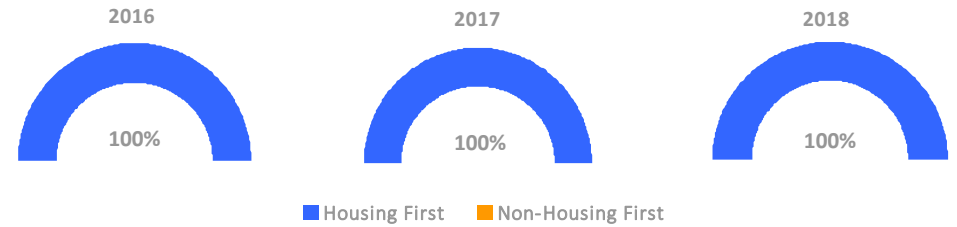
Returns to Homelessness Over Time



Exits to Permanent Housing by Program Type



Proportion of Housing First Projects by Year



Number of Projects by Year

	2016	2017	2018
Housing First Projects	15	15	15
Non-Housing First Projects	0	0	0

Data Summary: NH-502 Nashua/Hillsborough County CoC

Point-In-Time Count Summary

	2014	2015	2016	2017	2018	2017-18 Change	% Change
Number of Sheltered Persons in Families	95	144	109	135	117	-18	-13%
Number of Unsheltered Persons in Families	0	3	5	0	0	0	--
Number of Sheltered Individuals	173	175	174	148	158	10	7%
Number of Unsheltered Individuals	12	5	8	12	6	-6	-50%
Total Homeless Persons	280	327	296	295	281	-14	-5%
Number of Sheltered Families	34	62	27	46	41	-5	-11%
Number of Unsheltered Families	0	1	1	0	0	0	--
Number of Total Families	34	63	28	46	41	-5	-11%
Sheltered Chronically Homeless Individuals	68	33	6	3	6	3	100%
Unsheltered Chronically Homeless Individuals	7	4	6	10	4	-6	-60%
Total Chronically Homeless Individuals	75	37	12	13	10	-3	-23%
Sheltered Veterans	76	65	63	54	61	7	13%
Unsheltered Veterans	1	3	0	0	0	0	--
Total Veterans	77	68	63	54	61	7	13%
Sheltered Unaccompanied Youth (up to 24)	--	26	20	15	10	-5	-33%
Unsheltered Unaccompanied Youth (up to 24)	--	1	2	0	0	0	--
Total Unaccompanied Youth (up to 24)	--	27	22	15	10	-5	-33%

System Performance Measures Summary

	2014	2015	2016	2017	2018	2017-18 Change	% Change
Average Length of Time Homeless (days)	N/A	181	166	168	169	1	0.6%
Rate People Return to Homelessness in 6 Months	N/A	13.6%	8.3%	4.5%	5.4%	0.9%	N/A
Number of People who are Homeless for the First Time	N/A	983	951	805	518	-287	-35.7%
Rate People Exit from ES, SH, TH, and RRH to PH	N/A	62.5%	60.8%	51.3%	40.5%	-10.8%	N/A
Rate People in PSH and OPH Retain or Exit to PH	N/A	98.1%	97.1%	95.7%	98.1%	2.4%	N/A

Housing Inventory Count Summary

	2014	2015	2016	2017	2018	2017-18 Change	% Change
Emergency Shelter (ES)	110	126	106	106	104	-2	-2%
Safe Haven (SH)	5	5	5	5	5	0	0%
Transitional Housing (TH)	191	193	194	192	191	-1	-1%
Permanent Supportive Housing (PSH)	295	297	301	329	312	-17	-5%
Rapid Re-Housing (RRH)	15	15	--	45	25	-20	-44%

Award Summary

	2014	2015	2016	2017	2018	2017-18 Change	% Change
Continuum of Care (CoC)	\$1,846,344	\$1,814,588	\$1,869,026	\$1,869,026	\$1,936,674	\$67,648	4%
ESG (NH state recipient - no direct funding)	\$795,089	\$861,573	\$863,130	\$866,844	\$870,215	\$3,371	0%