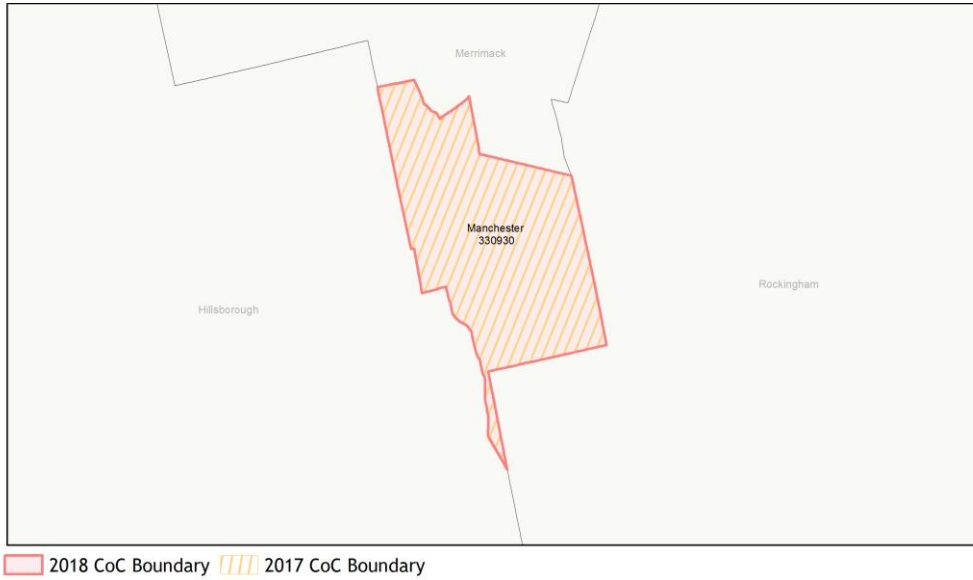
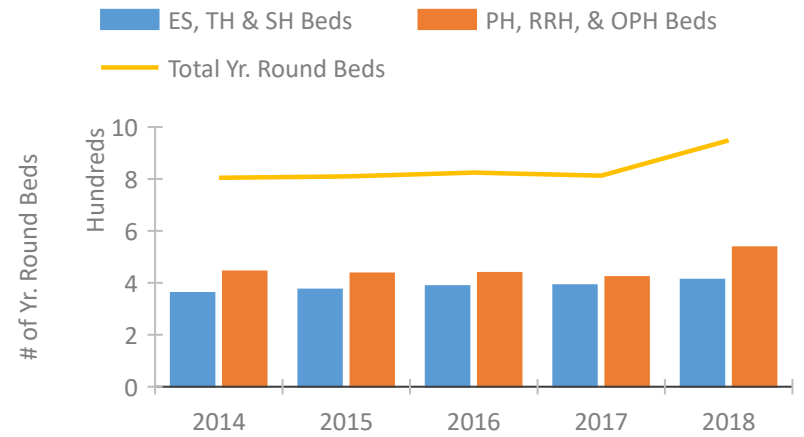


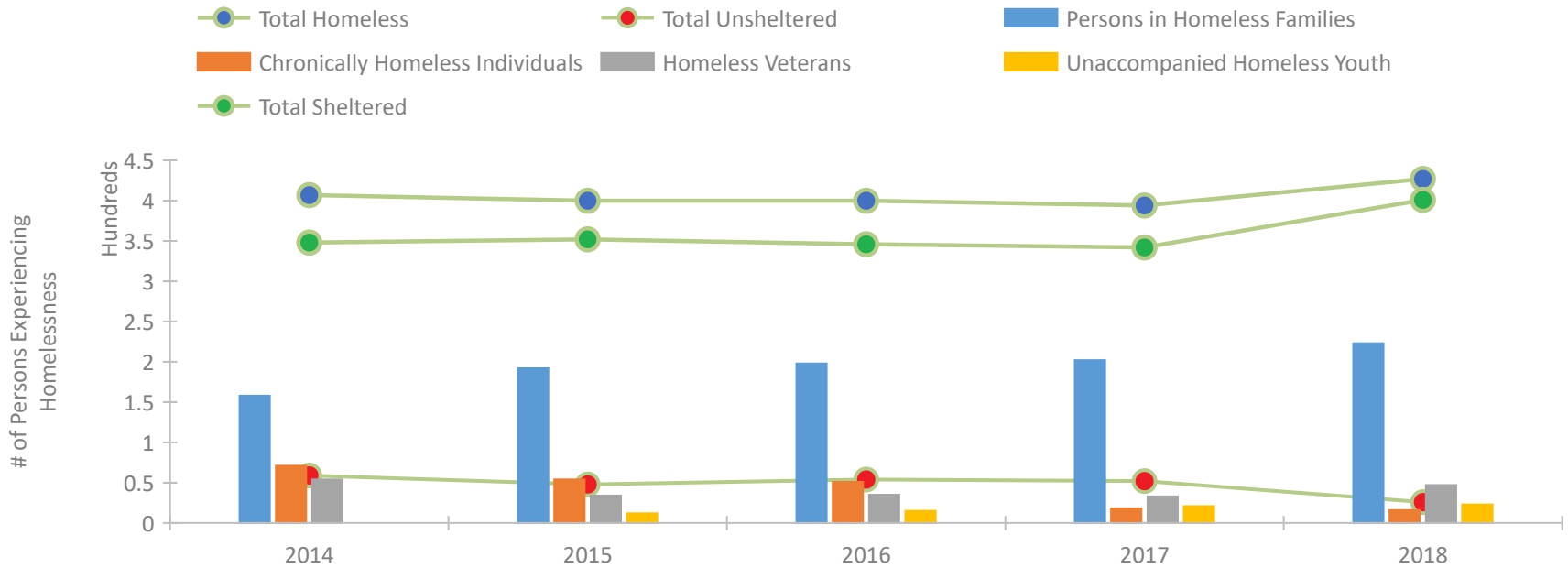
CoC Performance Profile NH-501 Manchester CoC



Housing Inventory Count by Program Type

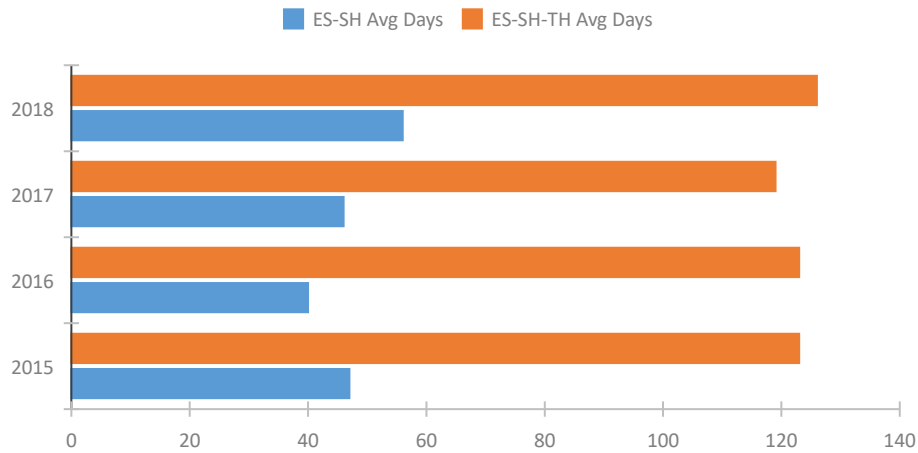


Homeless Population – Point-in-Time (PIT) Count

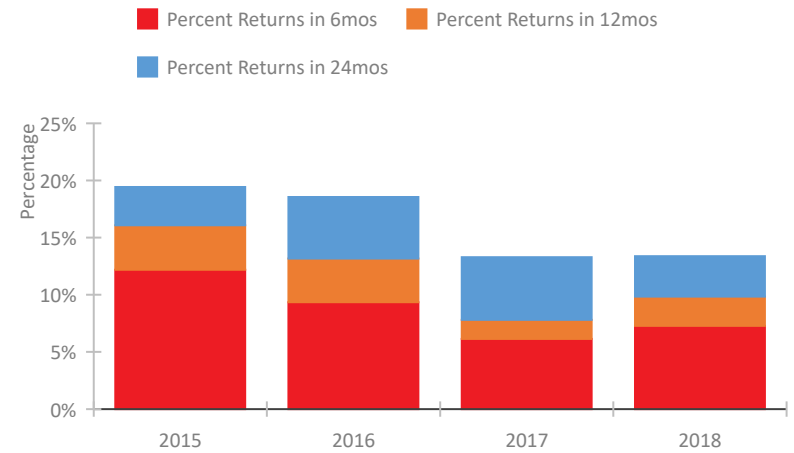


CoC Performance Profile NH-501 Manchester CoC

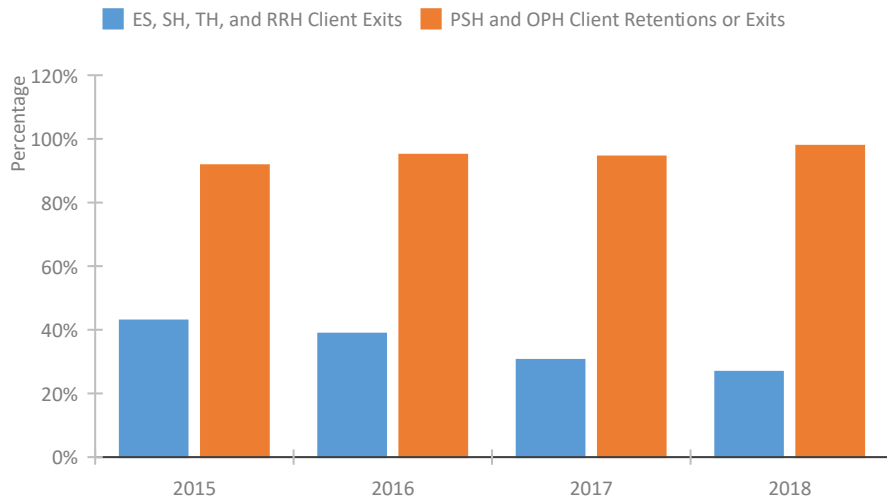
Length of Time Homeless



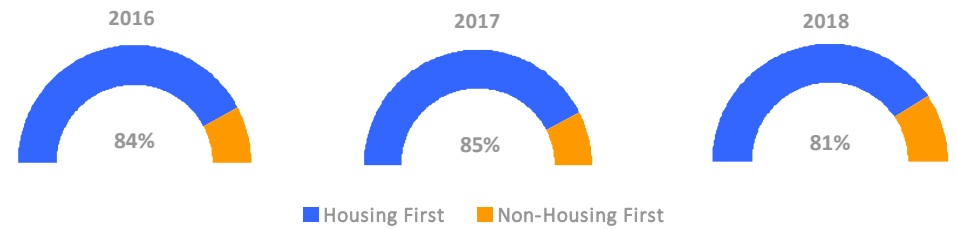
Returns to Homelessness Over Time



Exits to Permanent Housing by Program Type



Proportion of Housing First Projects by Year



Number of Projects by Year

	2016	2017	2018
Housing First Projects	16	17	17
Non-Housing First Projects	3	3	4

Data Summary: NH-501 Manchester CoC

Point-In-Time Count Summary

	2014	2015	2016	2017	2018	2017-18 Change	% Change
Number of Sheltered Persons in Families	158	190	196	194	218	24	12%
Number of Unsheltered Persons in Families	0	2	2	8	5	-3	-38%
Number of Sheltered Individuals	190	162	150	148	183	35	24%
Number of Unsheltered Individuals	59	46	52	44	21	-23	-52%
Total Homeless Persons	407	400	400	394	427	33	8%
Number of Sheltered Families	63	73	71	75	77	2	3%
Number of Unsheltered Families	0	1	1	3	2	-1	-33%
Number of Total Families	63	74	72	78	79	1	1%
Sheltered Chronically Homeless Individuals	52	38	32	9	16	7	78%
Unsheltered Chronically Homeless Individuals	19	16	19	9	0	-9	-100%
Total Chronically Homeless Individuals	71	54	51	18	16	-2	-11%
Sheltered Veterans	49	33	33	30	47	17	57%
Unsheltered Veterans	5	1	2	3	0	-3	-100%
Total Veterans	54	34	35	33	47	14	42%
Sheltered Unaccompanied Youth (up to 24)	--	9	10	15	19	4	27%
Unsheltered Unaccompanied Youth (up to 24)	--	3	5	6	4	-2	-33%
Total Unaccompanied Youth (up to 24)	--	12	15	21	23	2	10%

System Performance Measures Summary

	2014	2015	2016	2017	2018	2017-18 Change	% Change
Average Length of Time Homeless (days)	N/A	123	123	119	126	7	5.9%
Rate People Return to Homelessness in 6 Months	N/A	12.2%	9.3%	6.1%	7.3%	1.1%	N/A
Number of People who are Homeless for the First Time	N/A	1324	1538	1509	1071	-438	-29%
Rate People Exit from ES, SH, TH, and RRH to PH	N/A	42.9%	38.8%	30.5%	26.8%	-3.7%	N/A
Rate People in PSH and OPH Retain or Exit to PH	N/A	91.7%	95.0%	94.4%	97.8%	3.4%	N/A

Housing Inventory Count Summary

	2014	2015	2016	2017	2018	2017-18 Change	% Change
Emergency Shelter (ES)	147	155	156	196	206	10	5%
Safe Haven (SH)	4	4	4	4	4	0	0%
Transitional Housing (TH)	210	215	227	191	202	11	6%
Permanent Supportive Housing (PSH)	390	381	376	299	316	17	6%
Rapid Re-Housing (RRH)	54	55	62	45	134	89	198%
Other Permanent Housing (OPH)	--	--	--	78	87	9	12%

Award Summary

	2014	2015	2016	2017	2018	2017-18 Change	% Change
Continuum of Care (CoC)	\$1,284,265	\$1,537,898	\$1,544,841	\$1,524,628	\$1,543,817	\$19,189	1%
Emergency Solutions Grants (ESG)	\$135,931	\$147,944	\$151,302	\$149,498	\$150,641	\$1,143	1%