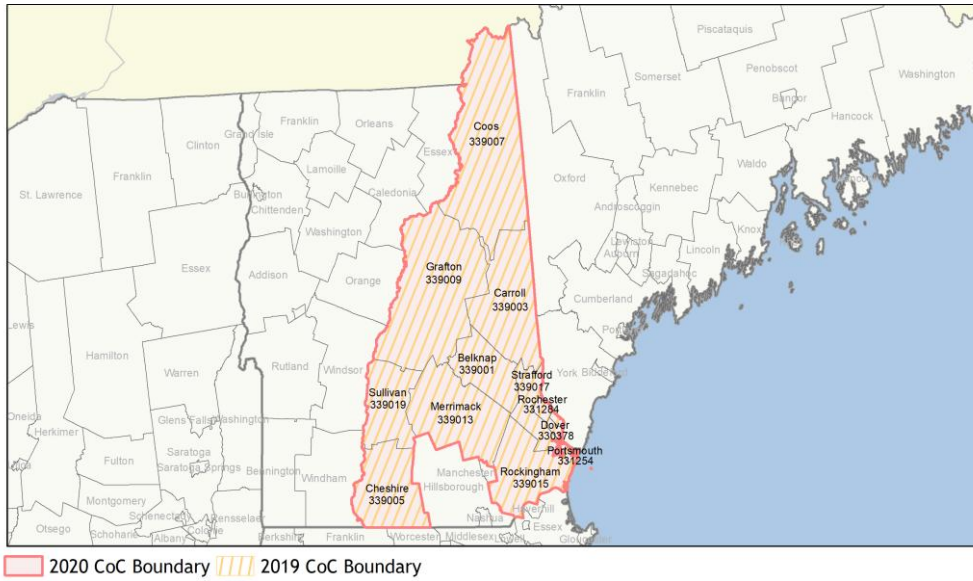
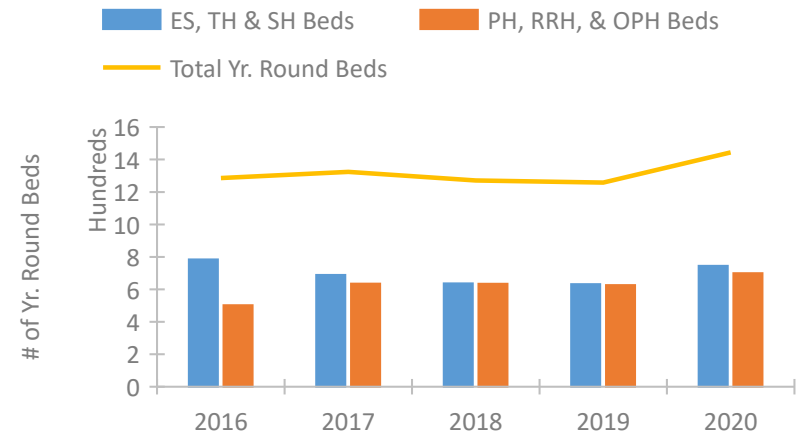


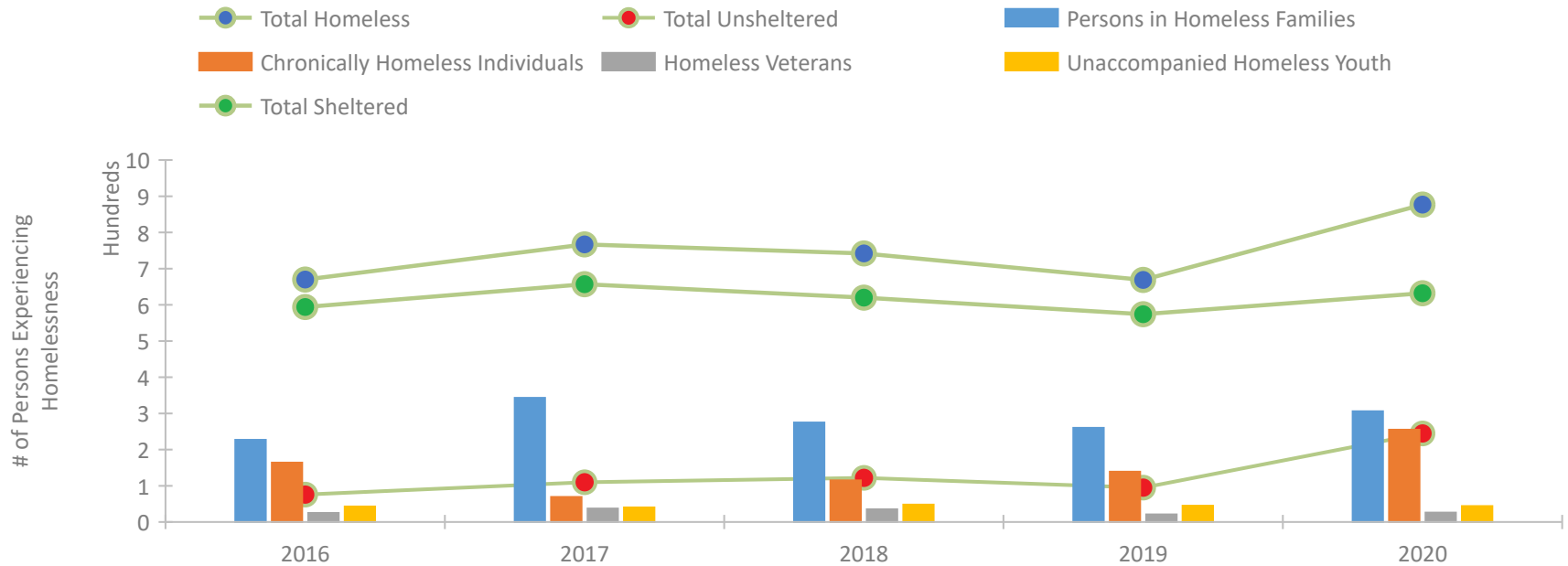
## CoC Performance Profile NH-500 New Hampshire Balance of State CoC



### Housing Inventory Count by Program Type

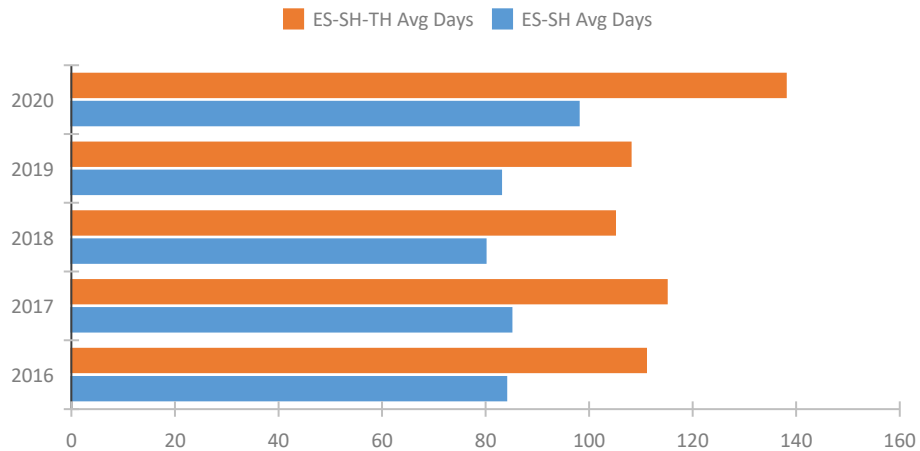


### Homeless Population – Point-in-Time (PIT) Count

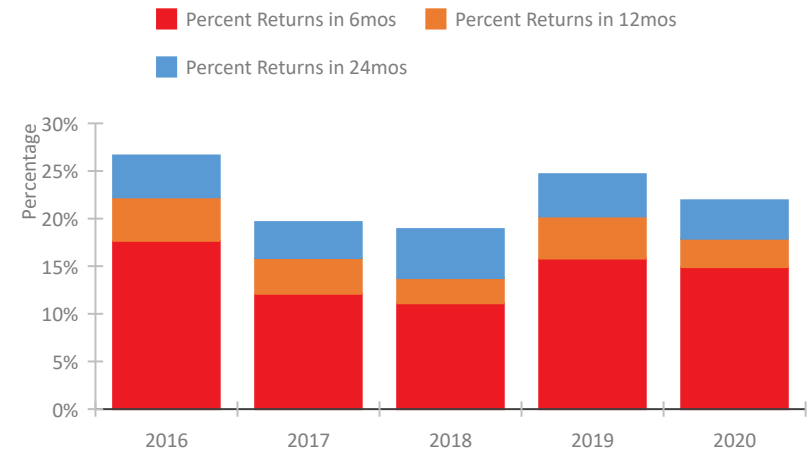


## CoC Performance Profile NH-500 New Hampshire Balance of State CoC

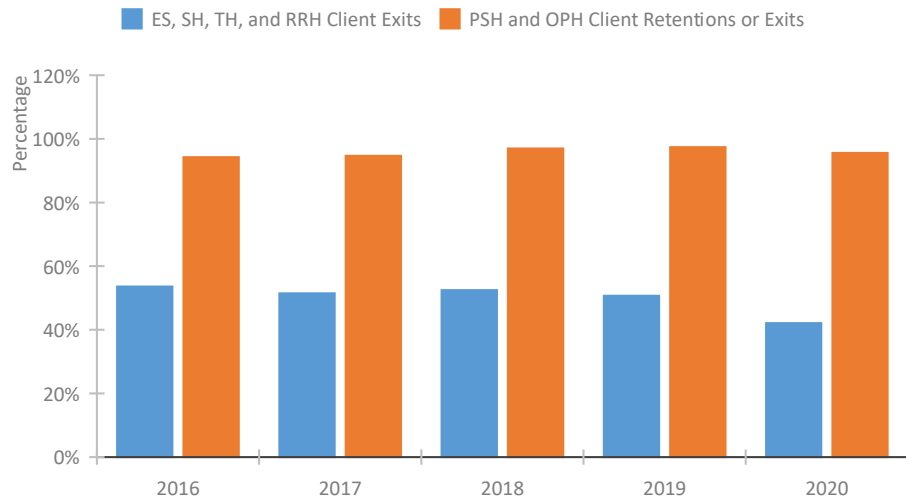
### Length of Time Homeless



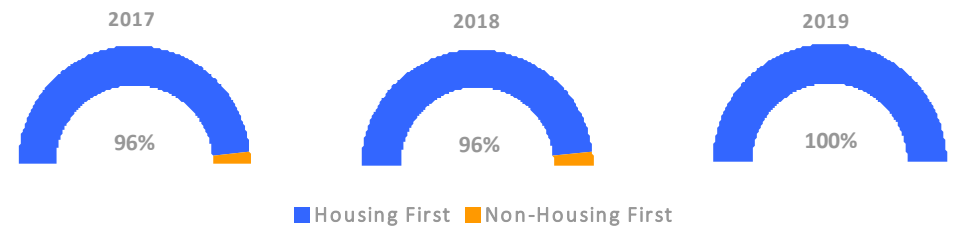
### Returns to Homelessness Over Time



### Exits to Permanent Housing by Program Type



### Proportion of Housing First Projects by Year\*



### Number of Projects by Year

	2017	2018	2019
Housing First Projects	27	23	27
Non-Housing First Projects	1	1	0

\*In 2020 HUD awarded renewal projects noncompetitively, therefore no new data was collected and Housing First data remains the same from 2019 to 2020.

## Data Summary: NH-500 New Hampshire Balance of State CoC

### Point-In-Time Count Summary

	2016	2017	2018	2019	2020	2019-20 Change	% Change
Number of Sheltered Persons in Families	223	315	268	256	291	35	14%
Number of Unsheltered Persons in Families	4	28	7	4	15	11	275%
Number of Sheltered Individuals	371	342	352	318	341	23	7%
Number of Unsheltered Individuals	72	82	115	91	230	139	153%
<b>Total Homeless Persons</b>	<b>670</b>	<b>767</b>	<b>742</b>	<b>669</b>	<b>877</b>	<b>208</b>	<b>31%</b>
Number of Sheltered Families	83	100	92	89	92	3	3%
Number of Unsheltered Families	2	14	3	2	5	3	150%
<b>Number of Total Families</b>	<b>85</b>	<b>114</b>	<b>95</b>	<b>91</b>	<b>97</b>	<b>6</b>	<b>7%</b>
Sheltered Chronically Homeless Individuals	126	26	63	90	108	18	20%
Unsheltered Chronically Homeless Individuals	38	43	52	49	147	98	200%
<b>Total Chronically Homeless Individuals</b>	<b>164</b>	<b>69</b>	<b>115</b>	<b>139</b>	<b>255</b>	<b>116</b>	<b>83%</b>
Sheltered Veterans	23	29	28	14	13	-1	-7%
Unsheltered Veterans	2	8	7	7	13	6	86%
<b>Total Veterans</b>	<b>25</b>	<b>37</b>	<b>35</b>	<b>21</b>	<b>26</b>	<b>5</b>	<b>24%</b>
Sheltered Unaccompanied Youth (up to 24)	42	32	31	32	31	-1	-3%
Unsheltered Unaccompanied Youth (up to 24)	1	8	17	13	13	0	-0%
<b>Total Unaccompanied Youth (up to 24)</b>	<b>43</b>	<b>40</b>	<b>48</b>	<b>45</b>	<b>44</b>	<b>-1</b>	<b>-2%</b>

### System Performance Measures Summary

	2016	2017	2018	2018	2020	2019-20 Change	% Change
Average Length of Time Homeless (days)	111	115	105	108	138	30	27.8%
Rate People Return to Homelessness in 6 Months	17.7%	12.1%	11.1%	15.8%	14.9%	-0.9%	N/A
Number of People who are Homeless for the First Time	1,787	1,746	1,819	1,695	1,219	-476	-28.1%
Rate People Exit from ES, SH, TH, and RRH to PH	53.6%	51.4%	52.4%	50.7%	42.1%	-8.6%	N/A
Rate People in PSH and OPH Retain or Exit to PH	94.3%	94.7%	97.0%	97.4%	95.6%	-1.8%	N/A

### Housing Inventory Count Summary

	2016	2017	2018	2019	2020	2019-20 Change	% Change
Emergency Shelter (ES)	545	505	509	541	643	102	19%
Transitional Housing (TH)	239	184	128	91	102	11	12%
Permanent Supportive Housing (PSH)	420	497	486	518	518	0	-0%
Rapid Re-Housing (RRH)	82	138	148	108	181	73	68%

### Award Summary

	2016	2017	2018	2019	2020	2019-20 Change	% Change
<b>Continuum of Care (CoC)</b>	\$3,556,085	\$3,860,250	\$4,193,853	\$4,589,707	\$4,775,549	\$185,842	4%
<b>ESG (NH state recipient - no direct funding)</b>	\$863,130	\$866,844	\$870,215	\$901,293	\$930,879	\$29,586	3%
<b>Youth Homelessness Demonstration Program (YHDP)</b>	--	--	--	--	\$2,209,513	--	--