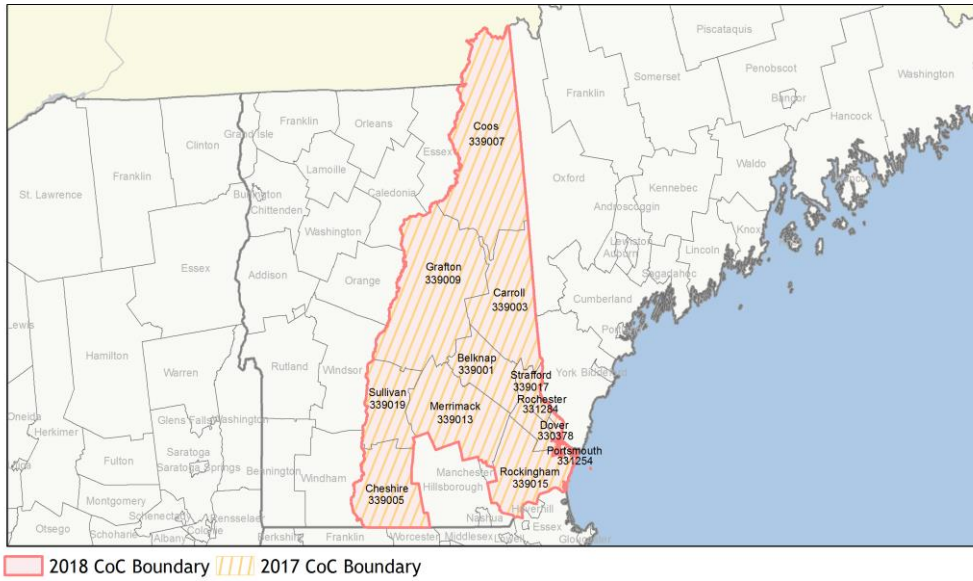
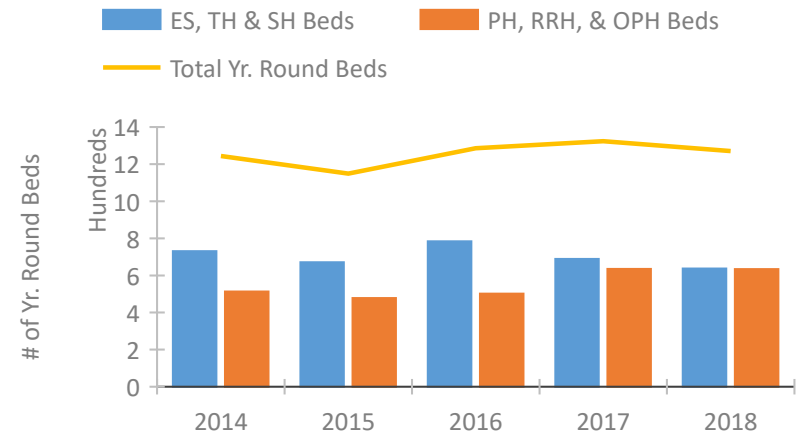


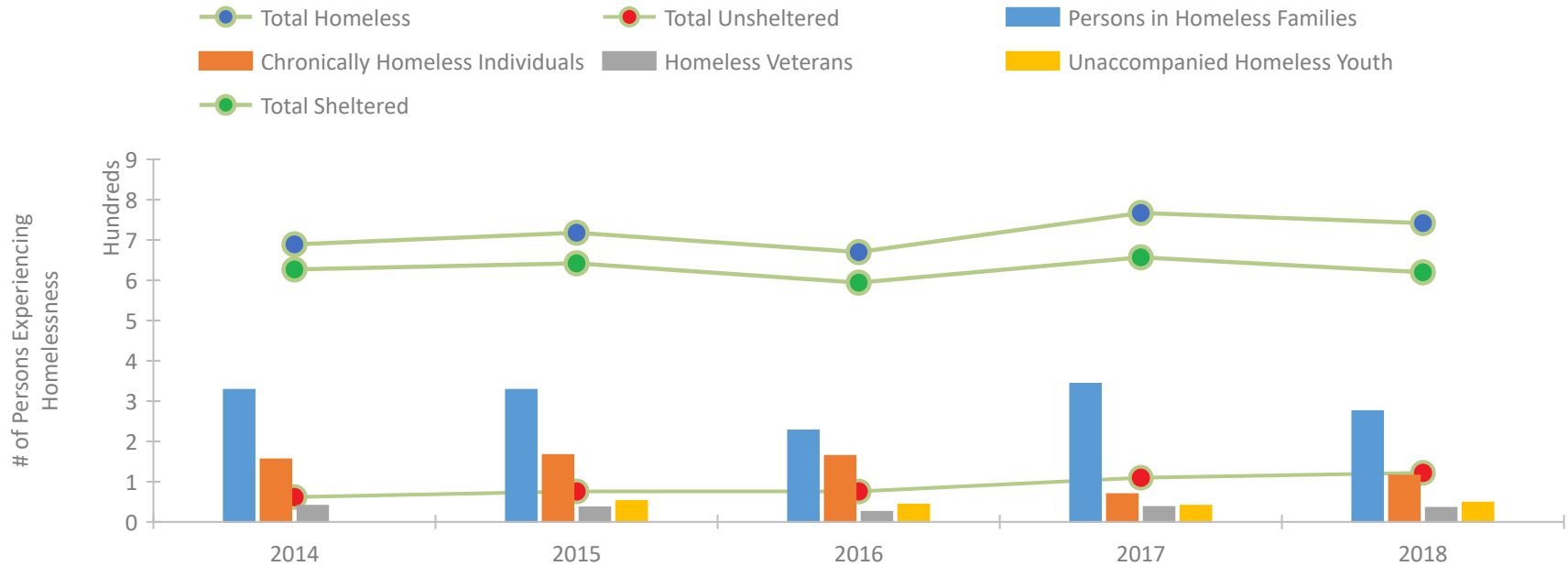
## CoC Performance Profile NH-500 New Hampshire Balance of State CoC



### Housing Inventory Count by Program Type

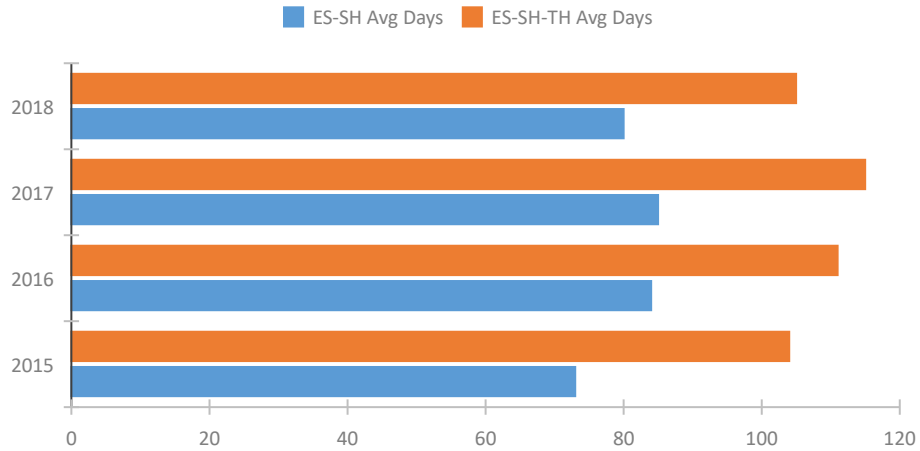


### Homeless Population – Point-in-Time (PIT) Count

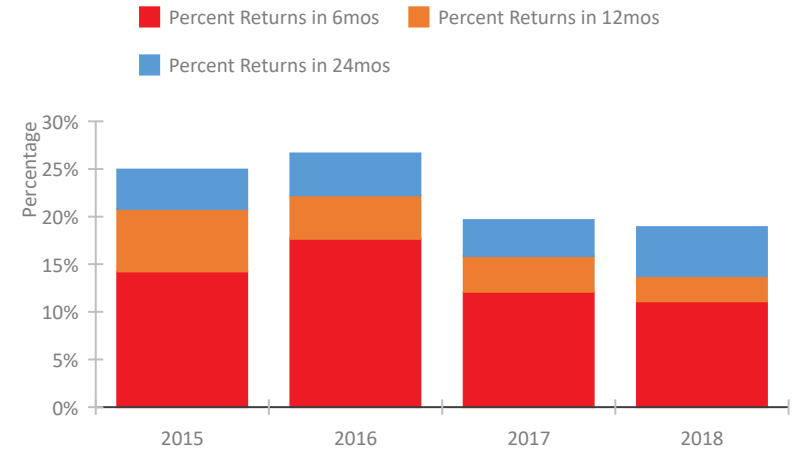


## CoC Performance Profile NH-500 New Hampshire Balance of State CoC

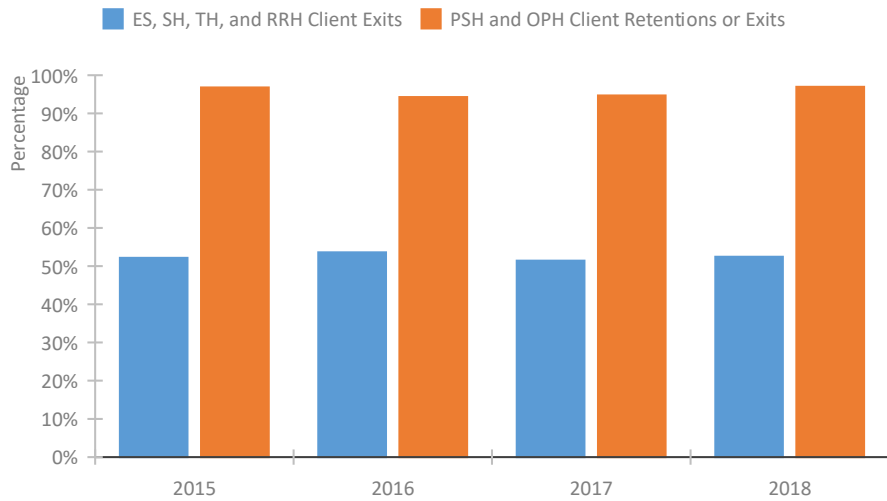
### Length of Time Homeless



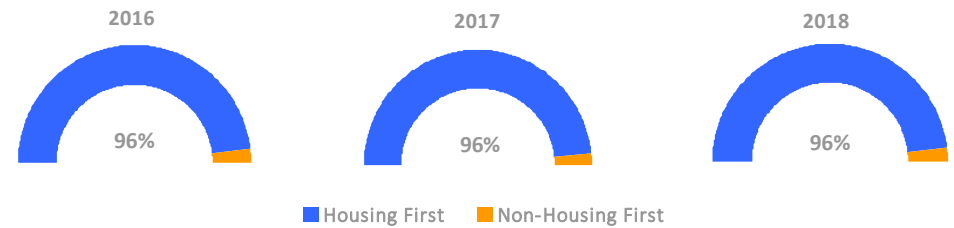
### Returns to Homelessness Over Time



### Exits to Permanent Housing by Program Type



### Proportion of Housing First Projects by Year



### Number of Projects by Year

	2016	2017	2018
Housing First Projects	23	27	23
Non-Housing First Projects	1	1	1

## Data Summary: NH-500 New Hampshire Balance of State CoC

### Point-In-Time Count Summary

	2014	2015	2016	2017	2018	2017-18 Change	% Change
Number of Sheltered Persons in Families	314	313	223	315	268	-47	-15%
Number of Unsheltered Persons in Families	14	15	4	28	7	-21	-75%
Number of Sheltered Individuals	313	329	371	342	352	10	3%
Number of Unsheltered Individuals	48	61	72	82	115	33	40%
<b>Total Homeless Persons</b>	<b>689</b>	<b>718</b>	<b>670</b>	<b>767</b>	<b>742</b>	<b>-25</b>	<b>-3%</b>
Number of Sheltered Families	110	103	83	100	92	-8	-8%
Number of Unsheltered Families	6	4	2	14	3	-11	-79%
<b>Number of Total Families</b>	<b>116</b>	<b>107</b>	<b>85</b>	<b>114</b>	<b>95</b>	<b>-19</b>	<b>-17%</b>
Sheltered Chronically Homeless Individuals	131	134	126	26	63	37	142%
Unsheltered Chronically Homeless Individuals	24	32	38	43	52	9	21%
<b>Total Chronically Homeless Individuals</b>	<b>155</b>	<b>166</b>	<b>164</b>	<b>69</b>	<b>115</b>	<b>46</b>	<b>67%</b>
Sheltered Veterans	37	26	23	29	28	-1	-3%
Unsheltered Veterans	3	10	2	8	7	-1	-12%
<b>Total Veterans</b>	<b>40</b>	<b>36</b>	<b>25</b>	<b>37</b>	<b>35</b>	<b>-2</b>	<b>-5%</b>
Sheltered Unaccompanied Youth (up to 24)	--	47	42	32	31	-1	-3%
Unsheltered Unaccompanied Youth (up to 24)	--	5	1	8	17	9	112%
<b>Total Unaccompanied Youth (up to 24)</b>	<b>--</b>	<b>52</b>	<b>43</b>	<b>40</b>	<b>48</b>	<b>8</b>	<b>20%</b>

### System Performance Measures Summary

	2014	2015	2016	2017	2018	2017-18 Change	% Change
Average Length of Time Homeless (days)	N/A	104	111	115	105	-10	-8.7%
Rate People Return to Homelessness in 6 Months	N/A	14.2%	17.7%	12.1%	11.1%	-1%	N/A
Number of People who are Homeless for the First Time	N/A	1939	1787	1746	1819	73	4.2%
Rate People Exit from ES, SH, TH, and RRH to PH	N/A	52.2%	53.6%	51.4%	52.4%	1%	N/A
Rate People in PSH and OPH Retain or Exit to PH	N/A	96.8%	94.3%	94.7%	97.0%	2.3%	N/A

### Housing Inventory Count Summary

	2014	2015	2016	2017	2018	2017-18 Change	% Change
Emergency Shelter (ES)	482	467	545	505	509	4	1%
Transitional Housing (TH)	249	204	239	184	128	-56	-30%
Permanent Supportive Housing (PSH)	398	432	420	497	486	-11	-2%
Rapid Re-Housing (RRH)	115	46	82	138	148	10	7%

### Award Summary

	2014	2015	2016	2017	2018	2017-18 Change	% Change
<b>Continuum of Care (CoC)</b>	\$3,491,586	\$3,552,510	\$3,556,085	\$3,860,250	\$4,193,853	\$333,603	9%
<b>ESG (NH state recipient - no direct funding)</b>	\$795,089	\$861,573	\$863,130	\$866,844	\$870,215	\$3,371	0%