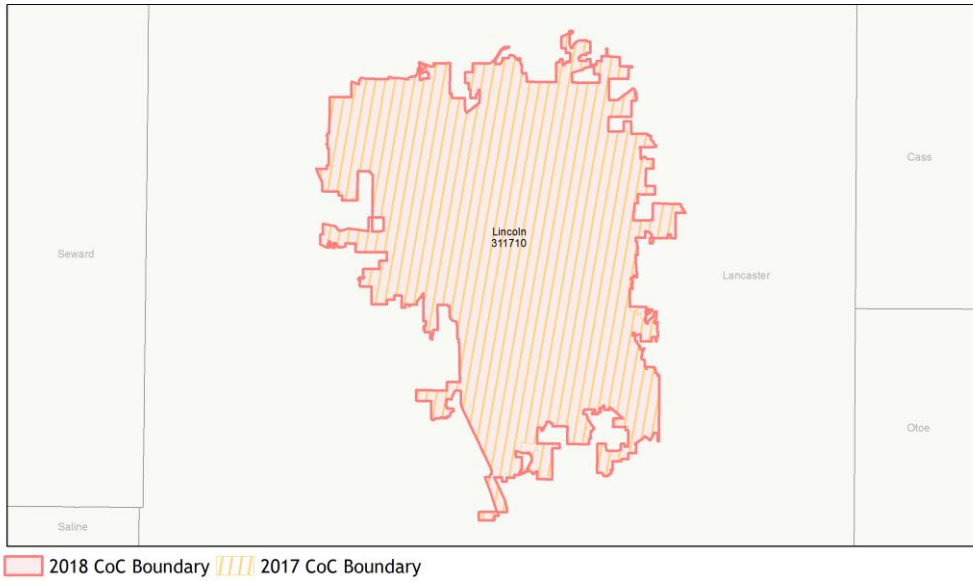
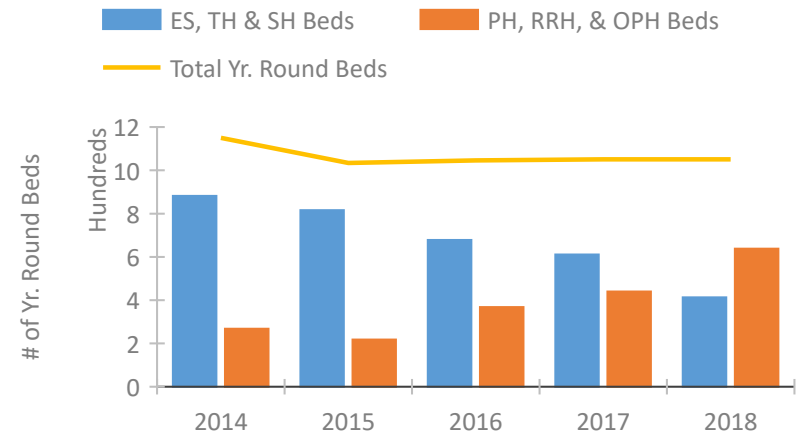


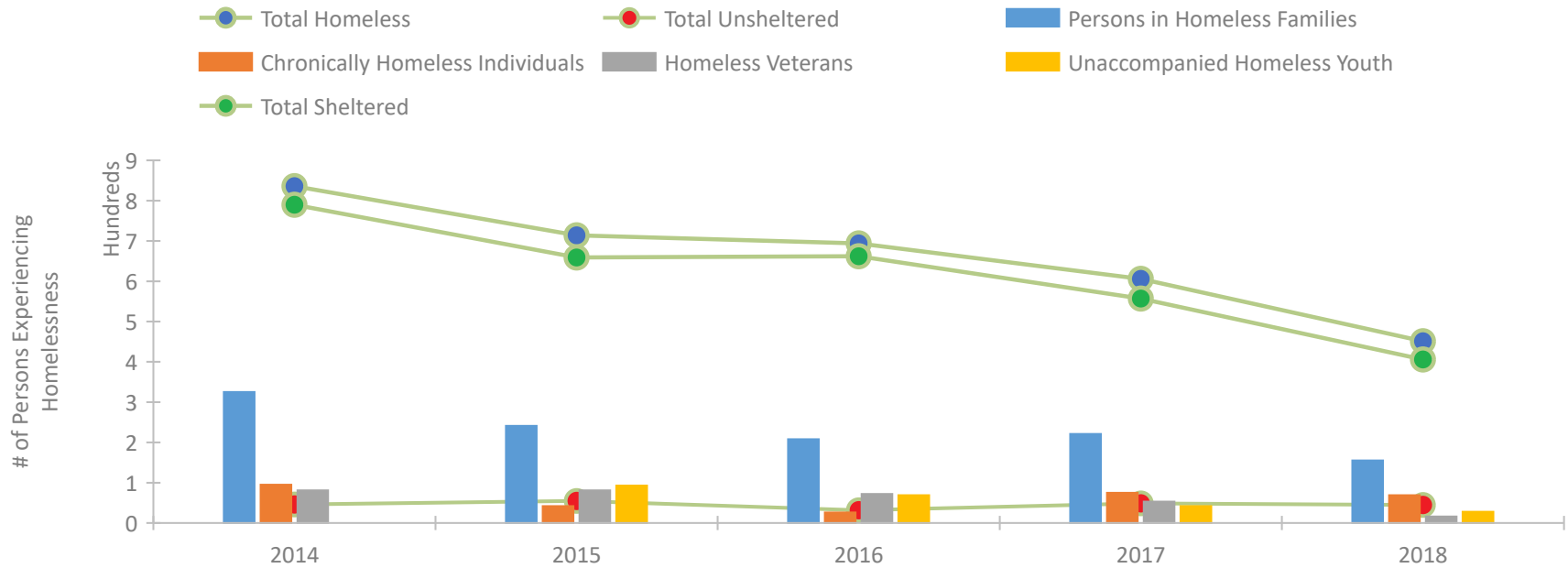
## CoC Performance Profile NE-502 Lincoln CoC



### Housing Inventory Count by Program Type

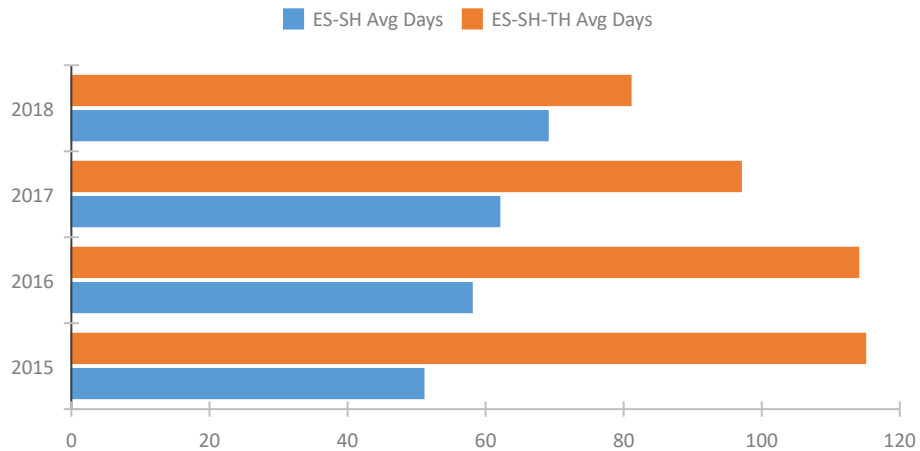


### Homeless Population – Point-in-Time (PIT) Count

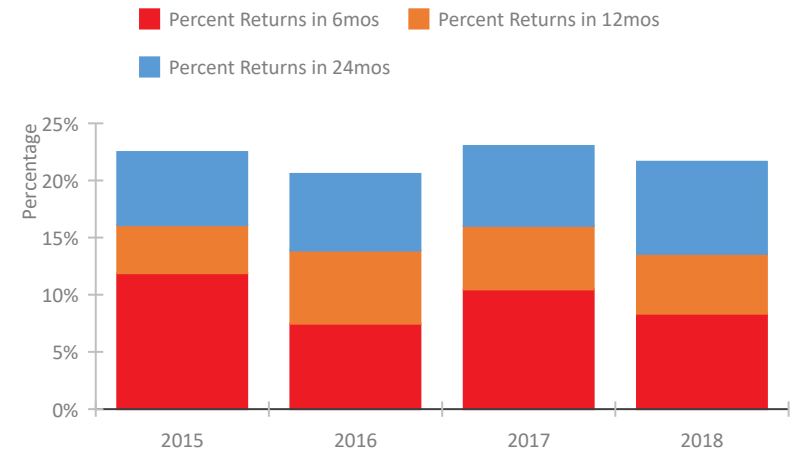


## CoC Performance Profile NE-502 Lincoln CoC

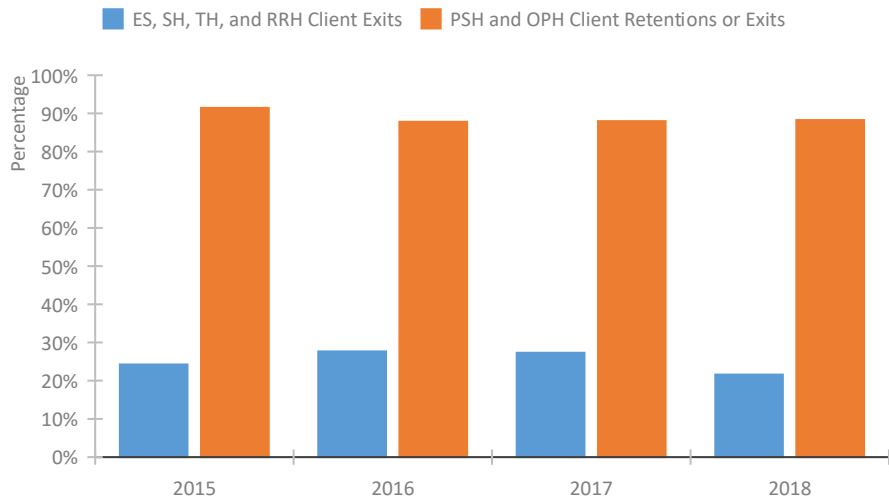
### Length of Time Homeless



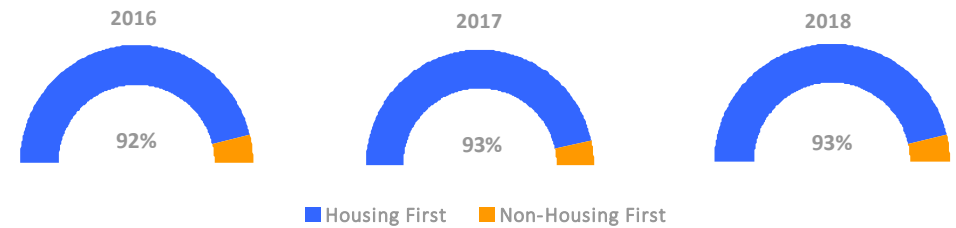
### Returns to Homelessness Over Time



### Exits to Permanent Housing by Program Type



### Proportion of Housing First Projects by Year



### Number of Projects by Year

	2016	2017	2018
Housing First Projects	12	14	13
Non-Housing First Projects	1	1	1

## Data Summary: NE-502 Lincoln CoC

### Point-In-Time Count Summary

	2014	2015	2016	2017	2018	2017-18 Change	% Change
Number of Sheltered Persons in Families	325	241	208	221	153	-68	-31%
Number of Unsheltered Persons in Families	0	0	0	0	2	2	100%
Number of Sheltered Individuals	465	418	454	336	253	-83	-25%
Number of Unsheltered Individuals	46	55	32	49	43	-6	-12%
<b>Total Homeless Persons</b>	<b>836</b>	<b>714</b>	<b>694</b>	<b>606</b>	<b>451</b>	<b>-155</b>	<b>-26%</b>
Number of Sheltered Families	99	78	63	60	53	-7	-12%
Number of Unsheltered Families	0	0	0	0	1	1	100%
<b>Number of Total Families</b>	<b>99</b>	<b>78</b>	<b>63</b>	<b>60</b>	<b>54</b>	<b>-6</b>	<b>-10%</b>
Sheltered Chronically Homeless Individuals	82	18	22	40	46	6	15%
Unsheltered Chronically Homeless Individuals	13	24	4	35	23	-12	-34%
<b>Total Chronically Homeless Individuals</b>	<b>95</b>	<b>42</b>	<b>26</b>	<b>75</b>	<b>69</b>	<b>-6</b>	<b>-8%</b>
Sheltered Veterans	75	77	71	53	16	-37	-70%
Unsheltered Veterans	6	4	1	0	0	0	--
<b>Total Veterans</b>	<b>81</b>	<b>81</b>	<b>72</b>	<b>53</b>	<b>16</b>	<b>-37</b>	<b>-70%</b>
Sheltered Unaccompanied Youth (up to 24)	--	77	69	39	27	-12	-31%
Unsheltered Unaccompanied Youth (up to 24)	--	16	0	3	1	-2	-67%
<b>Total Unaccompanied Youth (up to 24)</b>	<b>--</b>	<b>93</b>	<b>69</b>	<b>42</b>	<b>28</b>	<b>-14</b>	<b>-33%</b>

### System Performance Measures Summary

	2014	2015	2016	2017	2018	2017-18 Change	% Change
Average Length of Time Homeless (days)	N/A	115	114	97	81	-16	-16.5%
Rate People Return to Homelessness in 6 Months	N/A	11.9%	7.5%	10.5%	8.3%	-2.1%	N/A
Number of People who are Homeless for the First Time	N/A	1549	1564	1550	1383	-167	-10.8%
Rate People Exit from ES, SH, TH, and RRH to PH	N/A	24.3%	27.7%	27.3%	21.6%	-5.7%	N/A
Rate People in PSH and OPH Retain or Exit to PH	N/A	91.5%	87.8%	88.0%	88.3%	0.3%	N/A

### Housing Inventory Count Summary

	2014	2015	2016	2017	2018	2017-18 Change	% Change
Emergency Shelter (ES)	374	317	269	322	331	9	3%
Transitional Housing (TH)	508	499	409	289	82	-207	-72%
Permanent Supportive Housing (PSH)	93	79	227	242	312	70	29%
Rapid Re-Housing (RRH)	50	64	76	78	220	142	182%
Other Permanent Housing (OPH)	125	75	65	120	106	-14	-12%

### Award Summary

	2014	2015	2016	2017	2018	2017-18 Change	% Change
<b>Continuum of Care (CoC)</b>	\$1,948,934	\$2,230,675	\$2,257,143	\$2,321,900	\$2,372,628	\$50,728	2%
<b>Emergency Solutions Grants (ESG)</b>	\$137,610	\$148,942	\$144,736	\$153,174	\$150,536	(\$2,638)	-2%