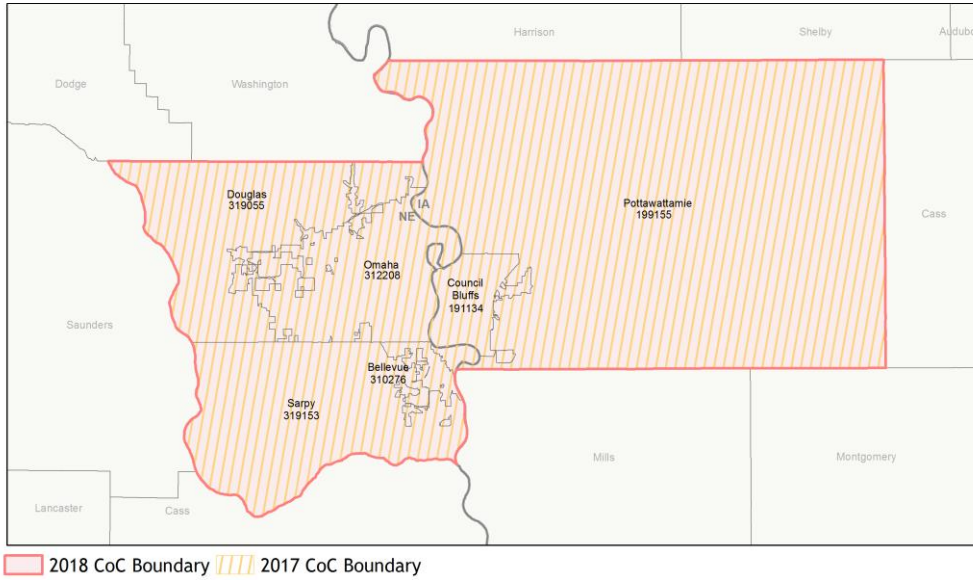
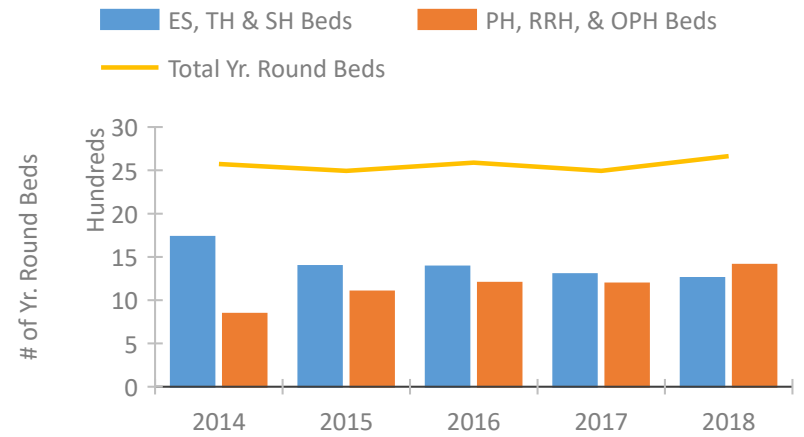


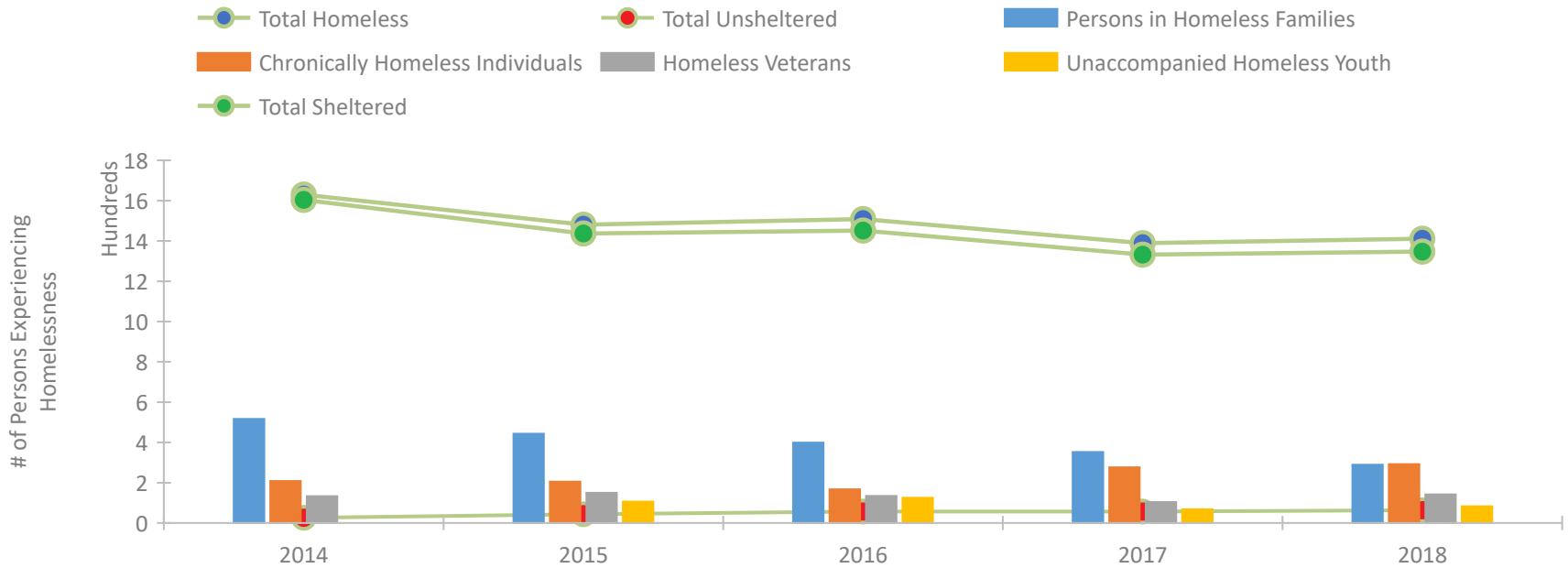
## CoC Performance Profile NE-501 Omaha, Council Bluffs CoC



### Housing Inventory Count by Program Type

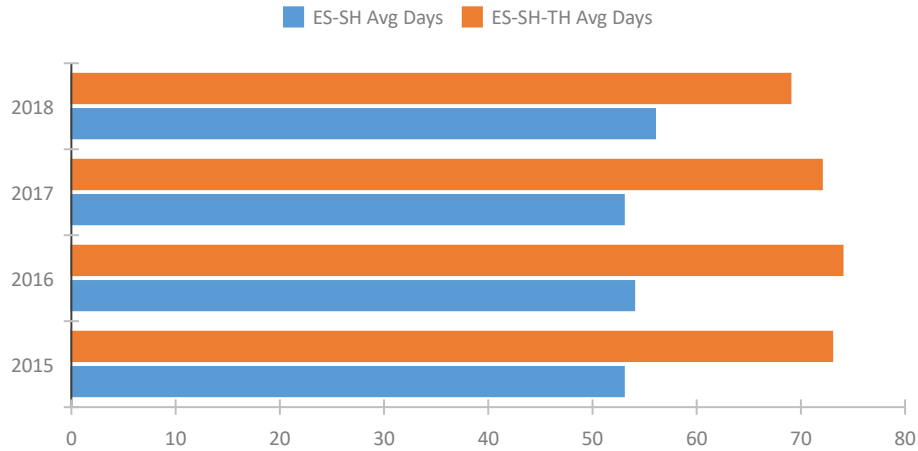


### Homeless Population – Point-in-Time (PIT) Count

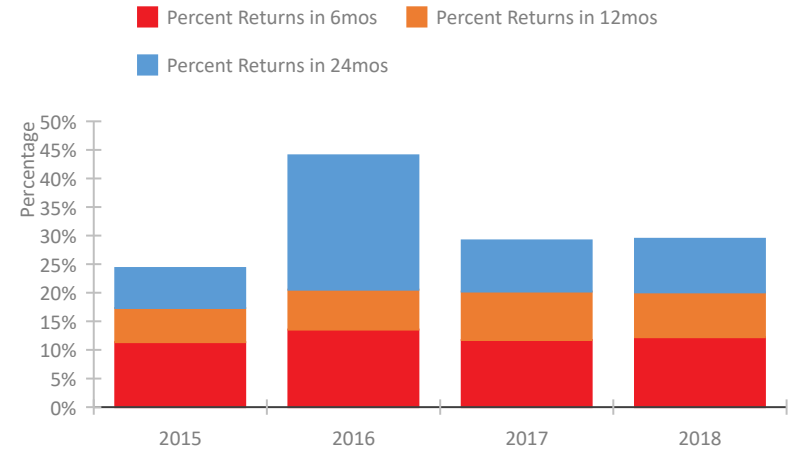


## CoC Performance Profile NE-501 Omaha, Council Bluffs CoC

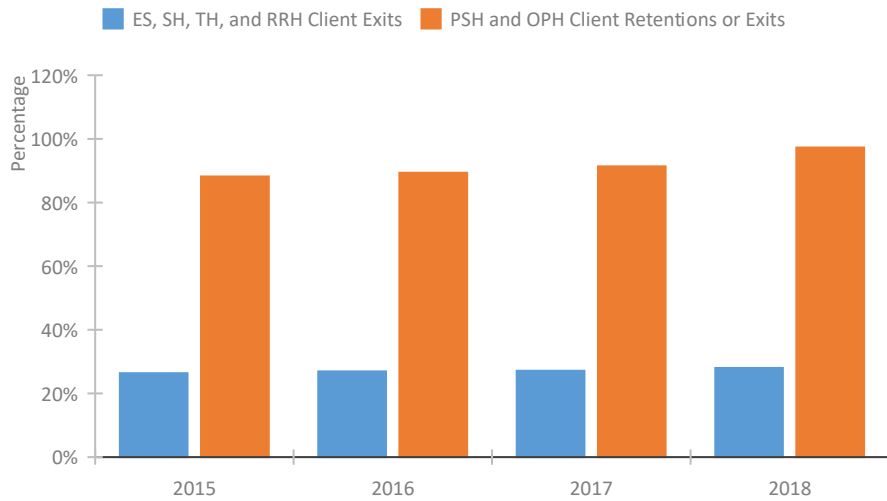
### Length of Time Homeless



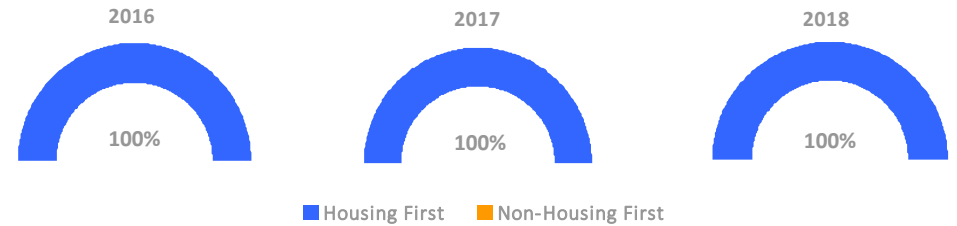
### Returns to Homelessness Over Time



### Exits to Permanent Housing by Program Type



### Proportion of Housing First Projects by Year



#### Number of Projects by Year

	2016	2017	2018
Housing First Projects	19	18	19
Non-Housing First Projects	0	0	0

## Data Summary: NE-501 Omaha, Council Bluffs CoC

### Point-In-Time Count Summary

	2014	2015	2016	2017	2018	2017-18 Change	% Change
Number of Sheltered Persons in Families	517	443	399	352	289	-63	-18%
Number of Unsheltered Persons in Families	0	0	0	0	0	0	--
Number of Sheltered Individuals	1,087	994	1,053	980	1,058	78	8%
Number of Unsheltered Individuals	26	44	57	57	64	7	12%
<b>Total Homeless Persons</b>	<b>1,630</b>	<b>1,481</b>	<b>1,509</b>	<b>1,389</b>	<b>1,411</b>	<b>22</b>	<b>2%</b>
Number of Sheltered Families	158	136	128	134	106	-28	-21%
Number of Unsheltered Families	0	0	0	0	0	0	--
<b>Number of Total Families</b>	<b>158</b>	<b>136</b>	<b>128</b>	<b>134</b>	<b>106</b>	<b>-28</b>	<b>-21%</b>
Sheltered Chronically Homeless Individuals	203	174	135	238	261	23	10%
Unsheltered Chronically Homeless Individuals	5	31	32	38	31	-7	-18%
<b>Total Chronically Homeless Individuals</b>	<b>208</b>	<b>205</b>	<b>167</b>	<b>276</b>	<b>292</b>	<b>16</b>	<b>6%</b>
Sheltered Veterans	131	145	128	103	141	38	37%
Unsheltered Veterans	2	5	6	1	1	0	0%
<b>Total Veterans</b>	<b>133</b>	<b>150</b>	<b>134</b>	<b>104</b>	<b>142</b>	<b>38</b>	<b>37%</b>
Sheltered Unaccompanied Youth (up to 24)	--	106	125	59	77	18	31%
Unsheltered Unaccompanied Youth (up to 24)	--	0	0	9	6	-3	-33%
<b>Total Unaccompanied Youth (up to 24)</b>	<b>--</b>	<b>106</b>	<b>125</b>	<b>68</b>	<b>83</b>	<b>15</b>	<b>22%</b>

### System Performance Measures Summary

	2014	2015	2016	2017	2018	2017-18 Change	% Change
Average Length of Time Homeless (days)	N/A	73	74	72	69	-3	-4.2%
Rate People Return to Homelessness in 6 Months	N/A	11.4%	13.6%	11.7%	12.2%	0.5%	N/A
Number of People who are Homeless for the First Time	N/A	4063	4599	4078	3925	-153	-3.8%
Rate People Exit from ES, SH, TH, and RRH to PH	N/A	26.4%	26.9%	27.1%	28.0%	0.9%	N/A
Rate People in PSH and OPH Retain or Exit to PH	N/A	88.1%	89.3%	91.4%	97.3%	5.9%	N/A

### Housing Inventory Count Summary

	2014	2015	2016	2017	2018	2017-18 Change	% Change
Emergency Shelter (ES)	937	875	865	856	821	-35	-4%
Transitional Housing (TH)	794	520	524	445	435	-10	-2%
Permanent Supportive Housing (PSH)	824	851	762	749	801	52	7%
Rapid Re-Housing (RRH)	18	165	304	284	441	157	55%
Other Permanent Housing (OPH)	--	84	134	160	167	7	4%

### Award Summary

	2014	2015	2016	2017	2018	2017-18 Change	% Change
<b>Continuum of Care (CoC)</b>	\$3,787,298	\$4,224,258	\$4,235,409	\$4,666,784	\$4,692,702	\$25,918	1%
<b>Emergency Solutions Grants (ESG)</b>	\$368,723	\$392,397	\$386,724	\$380,955	\$390,026	\$9,071	2%