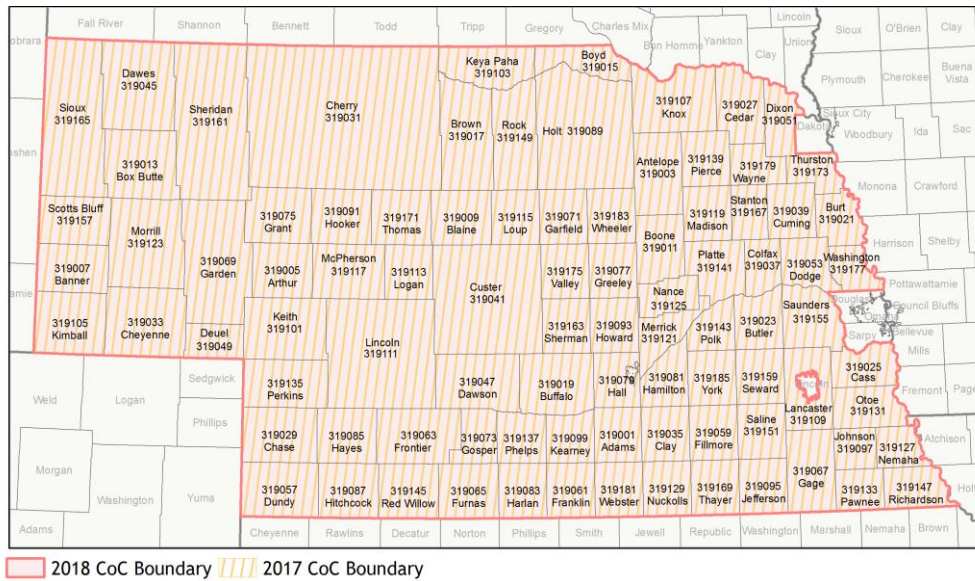
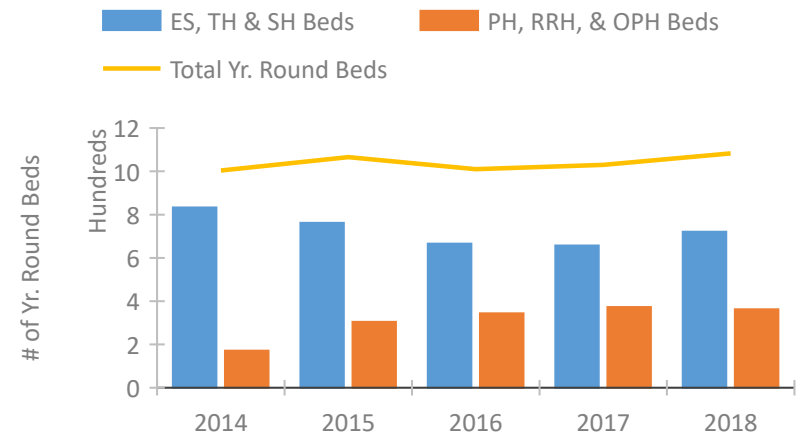


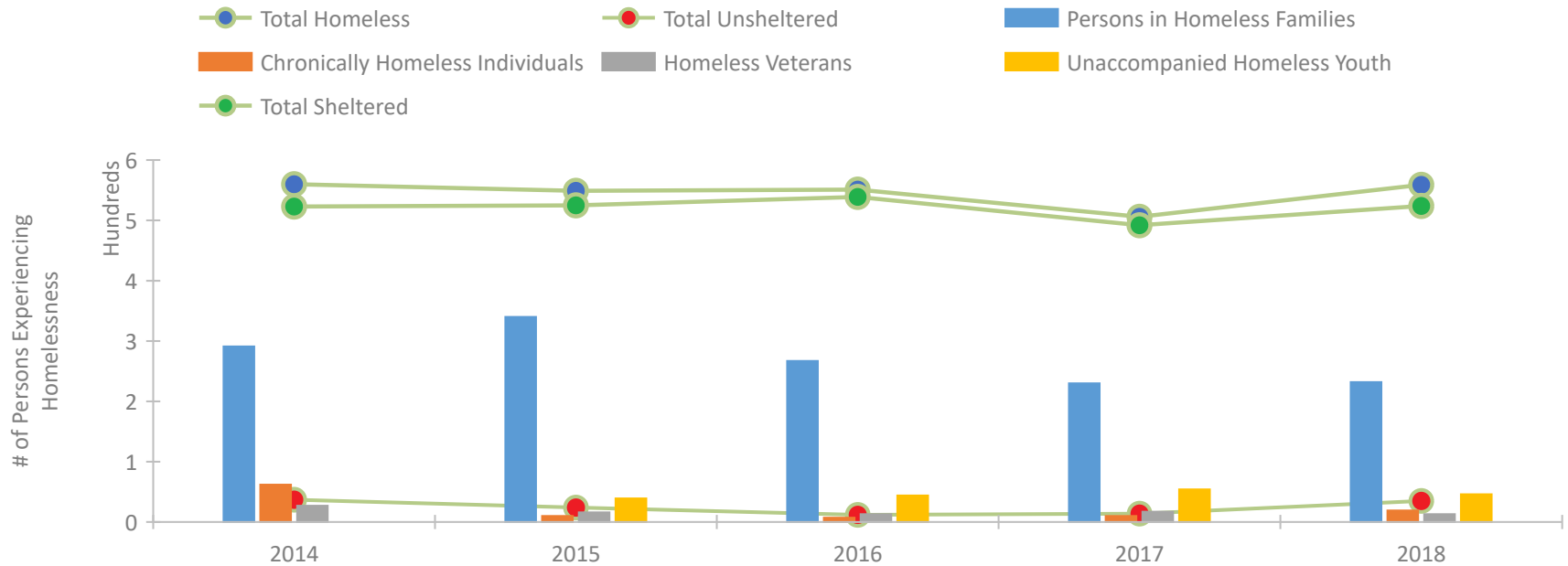
## CoC Performance Profile NE-500 Nebraska Balance of State CoC



### Housing Inventory Count by Program Type

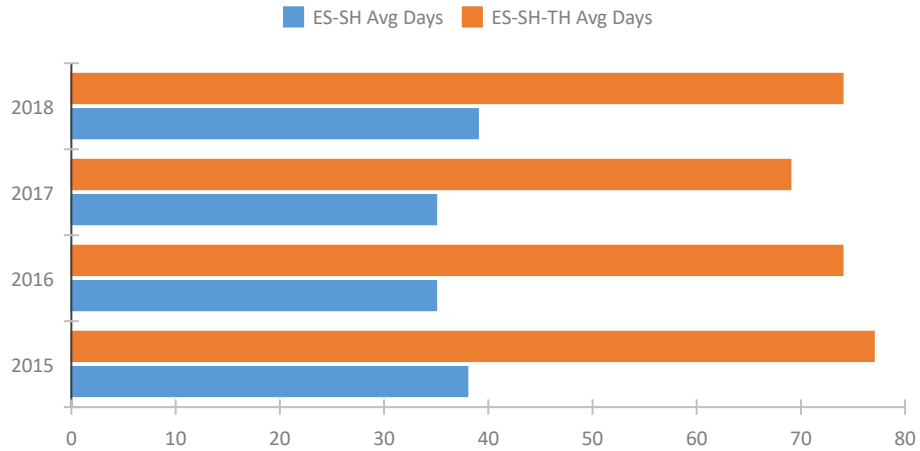


### Homeless Population – Point-in-Time (PIT) Count

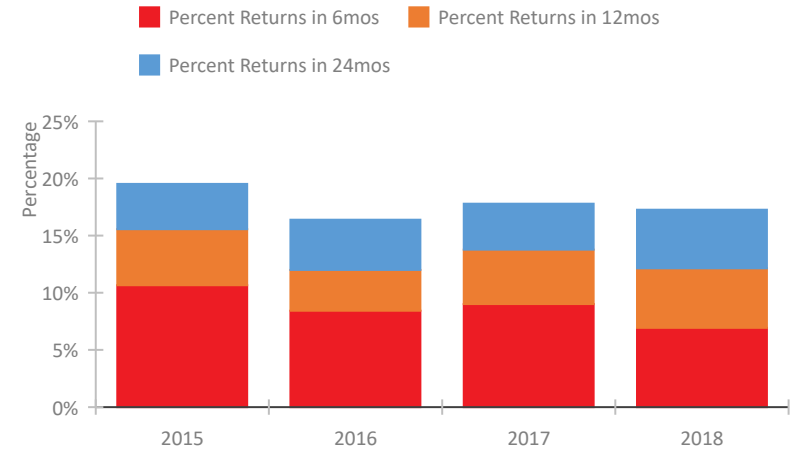


## CoC Performance Profile NE-500 Nebraska Balance of State CoC

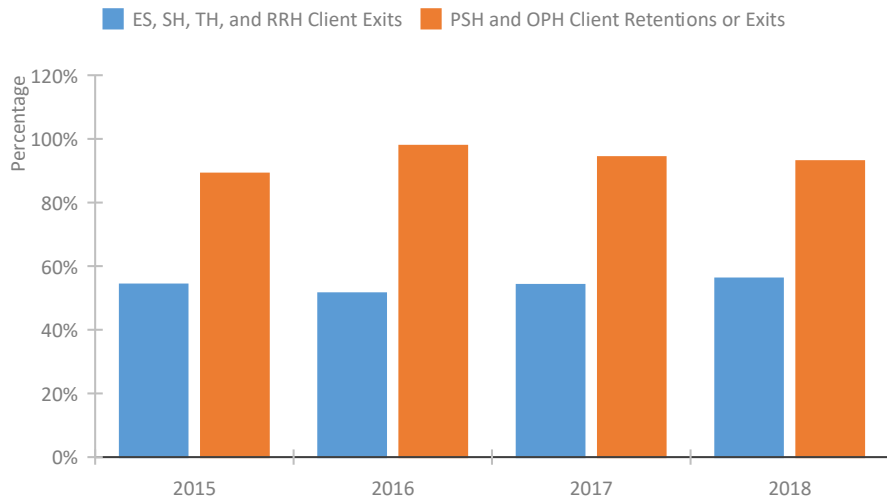
### Length of Time Homeless



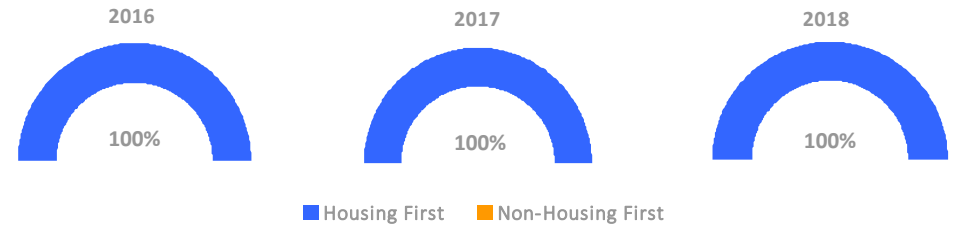
### Returns to Homelessness Over Time



### Exits to Permanent Housing by Program Type



### Proportion of Housing First Projects by Year



### Number of Projects by Year

	2016	2017	2018
Housing First Projects	15	15	15
Non-Housing First Projects	0	0	0

## Data Summary: NE-500 Nebraska Balance of State CoC

### Point-In-Time Count Summary

	2014	2015	2016	2017	2018	2017-18 Change	% Change
Number of Sheltered Persons in Families	287	340	267	230	227	-3	-1%
Number of Unsheltered Persons in Families	4	0	0	0	5	5	100%
Number of Sheltered Individuals	236	185	272	262	297	35	13%
Number of Unsheltered Individuals	33	24	12	14	30	16	114%
<b>Total Homeless Persons</b>	<b>560</b>	<b>549</b>	<b>551</b>	<b>506</b>	<b>559</b>	<b>53</b>	<b>10%</b>
Number of Sheltered Families	89	113	89	72	75	3	4%
Number of Unsheltered Families	1	0	0	0	1	1	100%
<b>Number of Total Families</b>	<b>90</b>	<b>113</b>	<b>89</b>	<b>72</b>	<b>76</b>	<b>4</b>	<b>6%</b>
Sheltered Chronically Homeless Individuals	51	9	6	7	18	11	157%
Unsheltered Chronically Homeless Individuals	11	1	1	3	1	-2	-67%
<b>Total Chronically Homeless Individuals</b>	<b>62</b>	<b>10</b>	<b>7</b>	<b>10</b>	<b>19</b>	<b>9</b>	<b>90%</b>
Sheltered Veterans	18	9	12	16	11	-5	-31%
Unsheltered Veterans	9	7	1	1	2	1	100%
<b>Total Veterans</b>	<b>27</b>	<b>16</b>	<b>13</b>	<b>17</b>	<b>13</b>	<b>-4</b>	<b>-24%</b>
Sheltered Unaccompanied Youth (up to 24)	--	37	44	53	40	-13	-25%
Unsheltered Unaccompanied Youth (up to 24)	--	2	0	1	6	5	500%
<b>Total Unaccompanied Youth (up to 24)</b>	<b>--</b>	<b>39</b>	<b>44</b>	<b>54</b>	<b>46</b>	<b>-8</b>	<b>-15%</b>

### System Performance Measures Summary

	2014	2015	2016	2017	2018	2017-18 Change	% Change
Average Length of Time Homeless (days)	N/A	77	74	69	74	5	7.2%
Rate People Return to Homelessness in 6 Months	N/A	10.7%	8.4%	9.0%	6.9%	-2.1%	N/A
Number of People who are Homeless for the First Time	N/A	1973	2171	2039	1848	-191	-9.4%
Rate People Exit from ES, SH, TH, and RRH to PH	N/A	54.2%	51.4%	54.1%	56.1%	2%	N/A
Rate People in PSH and OPH Retain or Exit to PH	N/A	89.1%	97.8%	94.3%	93.0%	-1.2%	N/A

### Housing Inventory Count Summary

	2014	2015	2016	2017	2018	2017-18 Change	% Change
Emergency Shelter (ES)	424	367	265	398	534	136	34%
Transitional Housing (TH)	409	395	401	259	187	-72	-28%
Permanent Supportive Housing (PSH)	116	94	124	114	127	13	11%
Rapid Re-Housing (RRH)	55	188	220	259	235	-24	-9%

### Award Summary

	2014	2015	2016	2017	2018	2017-18 Change	% Change
<b>Continuum of Care (CoC)</b>	\$1,916,413	\$2,023,586	\$2,027,150	\$2,062,221	\$2,042,862	(\$19,359)	-1%
<b>ESG (NE state recipient - no direct funding)</b>	\$869,446	\$948,440	\$941,814	\$942,120	\$942,140	\$20	0%
<b>Youth Homelessness Demonstration Program (YHDP)</b>	N/A	N/A	--	\$3,278,017	--	--	--